



COMMUNICATOR C1

SATA HDD Docking Station Combo

Quick Installation Guide

REV. 1.3

Copyright Notice

Copyright Incorporated 2011. All rights reserved.

Disclaimer

Incorporated shall not be liable for technical or editorial errors or omissions contained herein; nor for incidental or consequential damages resulting from furnishing this material, or the performance or use of this product. Incorporated reserves the right to change product specifications without notice. Information in this document may change without notice.

Trademarks

Microsoft, Windows XP, Windows VISTA and Windows 7 are registered trademarks of the Microsoft Corporation. All other brand and product names mentioned herein may be registered trademarks of their respective owners. Customers should ensure that their use of this product does not infringe upon any patent rights. Trademarks mentioned in this publication are used for identification purposes only and are properties of their respective companies.

1. Introduction

Thank you for purchasing a Communicator C1 HDD Combo Docking station. This unit allows you to install and access SATA drives quickly, and without the need for an enclosure. Simply plug the hard drive into the upright dock and connect it to a PC or notebook.

The Communicator C1 is a perfect solution for data recovery, drive imaging, and testing centers, or any environment requiring fast access to uninstalled/archived drives.

2. System Requirements

PC Systems

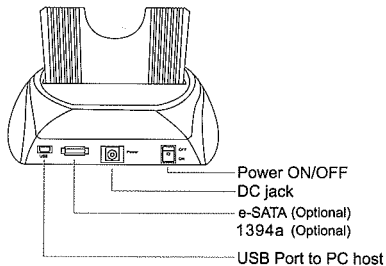
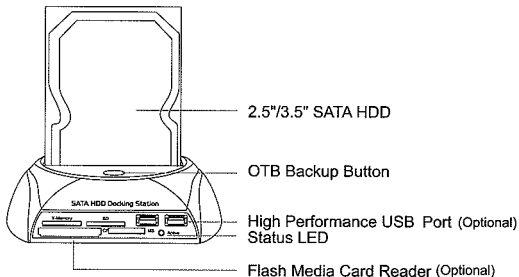
- Intel Pentium-III 500MHz equivalent or faster
- CD-ROM Drive / 256MB (Minimum) / 500MB of free disk space
- SVGA (800x600) or higher resolution with at least 256 colors
- This product works with Windows 2000, Windows XP, Windows VISTA, Windows 7

Macintosh Systems

- PowerMac G5, MacBook Pro or Mac Pro
- MacOS X, 10.4.8 (or later) / CD-ROM Drive

3. Installation

- Connect the Attached power adapter to the Communicator C1.
- Connect the USB or eSATA Cable to the Communicator C1 and attach the other end to your computer.



Insert 2.5" or 3.5" SATA HDD into the slot



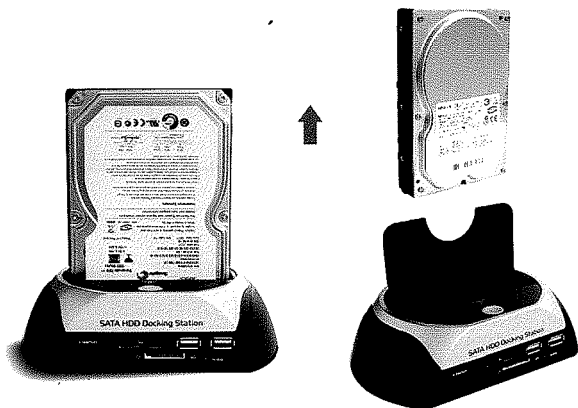
Simplify plug in the HDD upright

Secure the HDD with attached screw is optional



4. Removal

Warning: Please power down the Communicator C1 by pressing the power button to ensure safe removal of the hard drive(s). Do not remove the hard drive(s) when the disc is reading or writing.



5. Driver & Utility Installation

Drivers Installation

Windows 2000/XP/VISTA / 7

No drivers are necessary when using Windows . If the hard drive does not appear under My Computer, be sure to enter disc management in your control panel to partition your hard drive.

Windows ME

- The first time you plug in the Communicator C1 into a USB port or e-SATA of your computer, the "Add New Hardware Wizard" dialog box will appear.
- Click on [Next]. Check the [Search for the best driver for your device] and click on [Next again.]
- After the needed files are copied into your system, click on [Finish].
- You should now be able to see the new hard drives under My Computer. A green Unplug or Eject hardware icon will appear in the system tray as well. If the drive does not appear, you may need to partition your hard drive first.

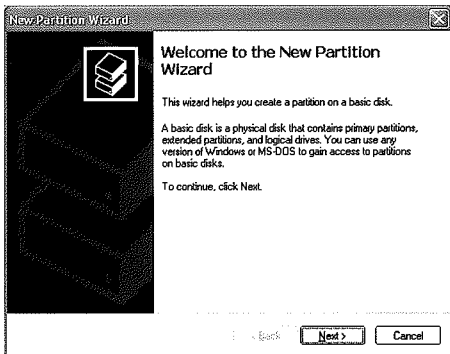
Mac OS 9.0 or later

No drivers are necessary when using Mac OS 9.0 above. If the hard drive does not appear on the desktop, be sure to partition your hard drive.

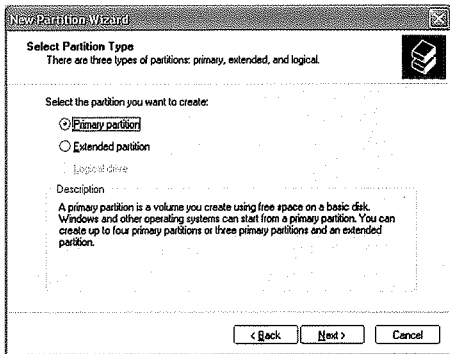
Mac OS 8.6

- Unplug the Communicator C1 if you currently have it connected.
- USB Mass Storage Support 1.3.5 must be installed on your system. If it is not, you can download the USB Mass Storage Support 1.3.5 from the Apple Software Updates website: <http://www.apple.com/support>.
- Follow the direction associated with the USB Mass Storage Support driver to install.
- Repeat the steps listed under "Connecting the Communicator C1 to your Computer".

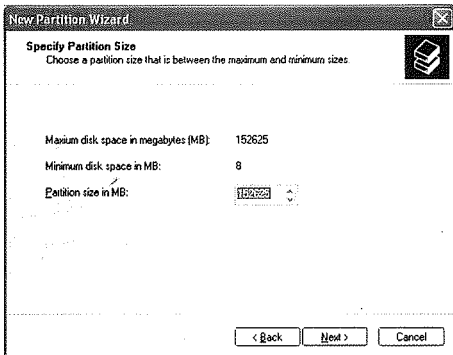
3).When the New Partition Wizard appears, click Next to continue.



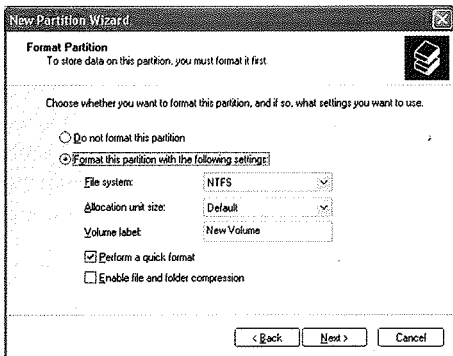
4).Select the partition type you wish to create by clicking on Primary or Extended, as appropriate. When you have made your selection, click Next to continue.



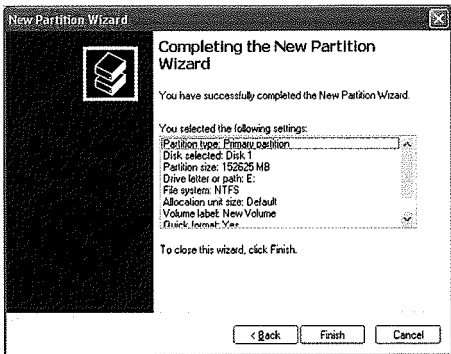
5). Specify the size of the partition you wish to create. You must select a partition size that is between the maximum and minimum sizes (typically the maximum disk space available). Once you have done so, click Next to continue.



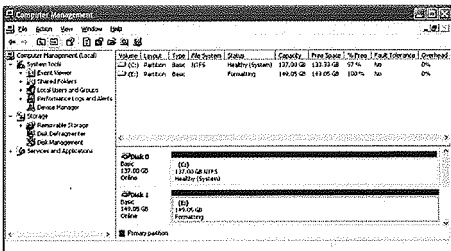
6). Select Format this partition with the following settings. Using the drop down buttons, select the file system, allocation unit size, and volume label you wish to use. Select Perform a Quick Format and click Next to continue.



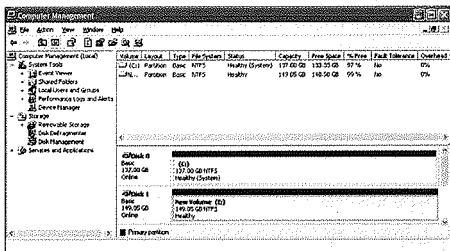
7). A notification window will appear indicating that you have successfully completed the New Partition Wizard. Click Finish to commence the formatting of the drive.



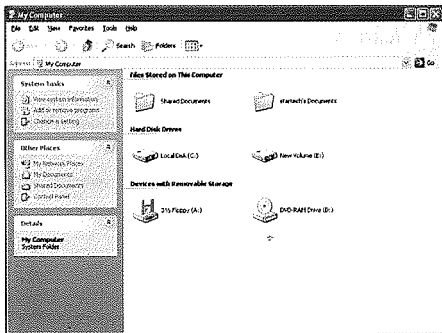
8). The status of the drive, as shown in the Computer Management window, will be updated to reflect the selections you have made. Please wait while the drive is being formatted.



9). Once the drive has been successfully partitioned and formatted, it will display as Healthy.



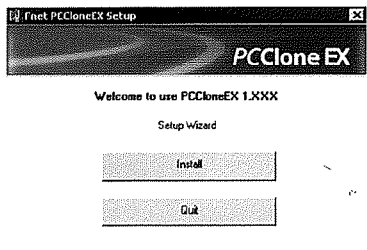
10). To access your newly partitioned drive(s), open My Computer. Your drive(s) should be displayed below the heading Hard Disk Drives.



7. Utility Installation

To install the One Touch Backup Utility

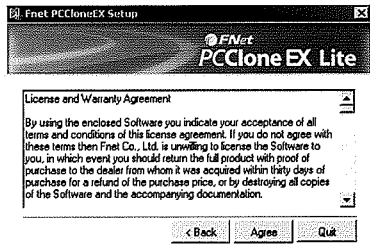
Please put PCClone EX CD into CD ROM drive, the program directly goes on the screen of PCClone Setup Wizard. (In case the screen doesn't come out, please operate the window box of "setup.exe")



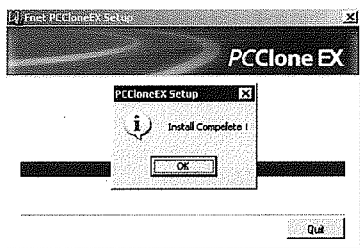
Click "install".

Before installing, please read the License and Warranty Agreement.

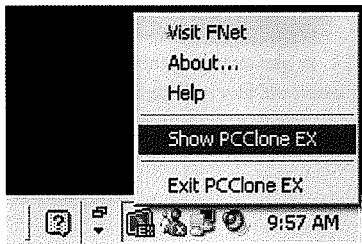
Click "Agree" for next steps.

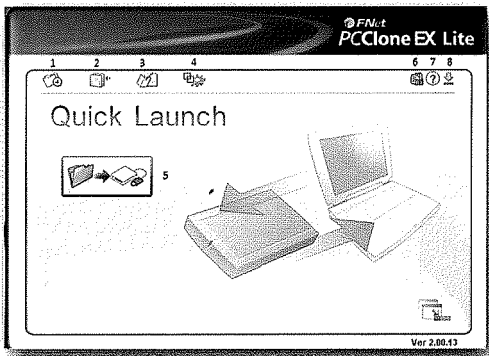


PCClone EX installation is completed, and click "OK" to quit.



The "PCClone EX" icon will be displayed at the notification area after installation, double-click the icon or right-click the mouse to show and execute its functions.





1. Quick Launch
2. File Backup
3. File Manager
4. Setup
5. File Backup
6. About
7. Help
8. Minimize

For detailed information on how to use the PC Clone EX Lite software, click on the Help button.

WEEE Directive & Product Disposal



At the end of its serviceable life, this product should not be treated as household or general waste. It should be handed over to the applicable collection point for the recycling of electrical and electronic equipment, or returned to the supplier for disposal.