

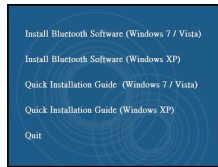
PC System Requirements

- one available USB port
- Windows 7 / Vista

Step 1: Software Setup

Note: please do not insert the USB adapter into the USB port prior to software installation.

Step 1. Put the CD-Rom into the computer's CD drive and click the software installation button for "Windows 7 /Vista" system.



Step 2 The software installShield wizard window appears, click "Agree and Install Bluetooth Software" to start the installation.



Step 3 The InstallShield will begin performing the installation and setup.



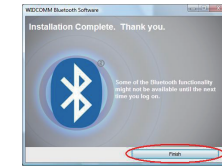
Step 4 During the installation process, you may be prompted to insert the adapter into a USB port, as shown in the image below. Please insert your USB adapter and click "OK" or click "Cancel" to continue installation without the USB adapter.



Step 5 The InstallShield Wizard will continue to install the Bluetooth software.



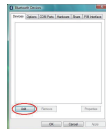
Step 6 Click "Finish" to confirm the completion of the software installation.



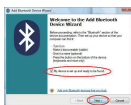
Step 2 : Bluetooth Device Setup

Insert the USB adapter directly to an available USB connector on your computer, the system should register a new USB device found. Please follow the below instructions to complete the Bluetooth installation on your PC :

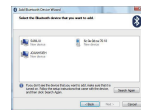
Step 1. Click the Bluetooth Icon from your toolbar and choose "Add" in the Bluetooth Devices window.



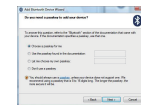
Step 2. Choose "My device is set up and ready to be found" then click "Next" to continue.



Step 3. Select the device you want to make a connection with, then click "Next" to continue.



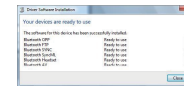
Step 4. Choose whether you want Windows to generate a Passkey for you, or use the specific Passkey contained in the documentation of the Bluetooth device, or choose a Passkey yourself.



Step 5. Click "Finish" to confirm the connection between your Bluetooth device and the USB adapter. The tool-bar will display "Your devices are ready to use".



Step 6. Any required Bluetooth application profiles will be automatically installed.



* When the Bluetooth adapter is installed you can start/stop the Bluetooth service by right-clicking the Bluetooth icon in the task bar and selecting to either start or stop the Bluetooth service from the pop-up menu. The icon color is white when the Bluetooth service is active and red when it is stopped.



This device complies with Part 15 of the FCC Rules. Operation is subject to the following two conditions :
 (1) device may not cause harmful interference, and
 (2) this device must accept any interference received, including interference that may cause undesired operation.

Caution: changes or modifications not expressly approved by the party responsible for compliance could void the user's authority to operate the equipment.

