

MONOPRICE



60x | 250x DIGITAL MICROSCOPE

PID 11613

USER'S MANUAL

■ Table of Contents

Important Information.....	4
Product Description.....	4
Computer Requirements.....	5
Windows Based PCs.....	5
Mac OS X Based PCs.....	5
Package Contents.....	6
Product Overview	7
Product Specifications.....	8
Software Installation	9
Windows Based PCs.....	9
Mac OS X Based PCs.....	9
Getting Started.....	10
Connecting the Device.....	10
Starting the Digital Viewer Software.....	10
Windows Based PCs.....	10
Mac OS X Based PCs.....	10
Assembling the Stand.....	11
Attaching the Microscope to the Stand.....	12
Focusing.....	13
Preparation.....	13
Viewing an Object at a Distance or on the Stand	14

60x Magnification (17" monitor)	15
250x Magnification (17" monitor)	16
Adjusting the LED Light Intensity	17
Taking a Snapshot	18
Using the Digital Viewer Software.....	19
System Settings Menu.....	20
Device Setup	21
Timed Shot Setup	21
Movie Setup	21
Save Setting	21
Language Setting	21
Advanced Settings	22
Saved Files.....	22
Full Screen Viewing.....	23
Uninstalling the Digital Viewer Software.....	23
Windows Based PCs.....	23
Mac OS X Based PCs.....	23
Care and Maintenance	24
Warnings.....	24

■ Important Information

Please read this instruction manual carefully before using this product. Retain this manual for future reference.

Information in this manual is subject to change without notice. Updated manuals will be made available on the Monoprice website.

■ Product Description

1. This digital microscope differs from a traditional optical microscope in that, instead of looking through an eyepiece, a magnified image or live video is displayed on a computer monitor via a USB connection.
2. The magnification power depends on the size of the monitor used – the larger the monitor, the higher the magnification. This device has 2 magnification powers, it can magnify images up to 60x and 250x when placed directly on top of the object, while using a 17" monitor.
3. This device has 4 LED lights with adjustable intensity.

■ Computer Requirements

■ Windows Based PCs

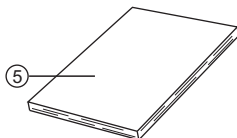
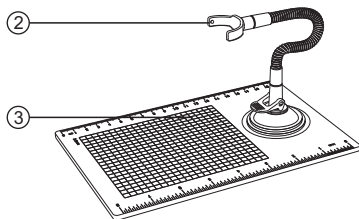
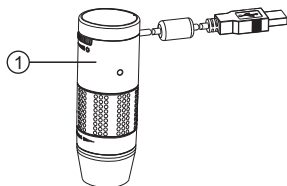
Compatible Operating Systems	Windows XP SP2, SP3 Windows Vista (32 bit or 64 bit) Windows 7 (32 bit or 64 bit) Windows 8 (32 bit or 64 bit)
CPU Speed	P4-1.8GHz or above
RAM	512 MB or above
Hard Disk	800 MB or above
USB	USB 2.0

■ Mac OS X Based PCs

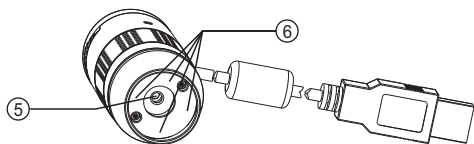
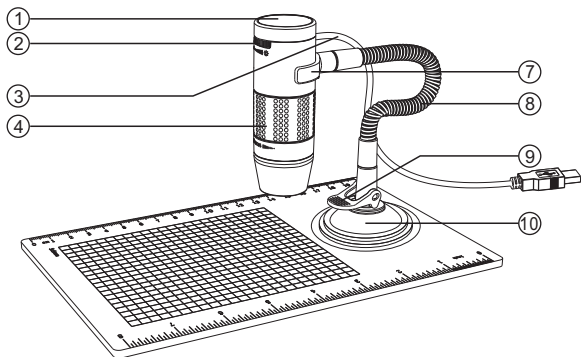
Compatible Operating Systems	Mac OS X 10.4.8 - Mac OS X 10.9.x
CPU Speed	Power PC G3/G4/G5 or Intel based
RAM	128 MB or above
Hard Disk	800 MB or above
USB	USB 2.0

■ Package Contents

- | | |
|--------------------|----|
| 1. Microscope | x1 |
| 2. Stand | x1 |
| 3. Observation Pad | x1 |
| 4. Application CD | x1 |
| 5. User's Manual | x1 |



■ Product Overview



1. Snapshot button

2. Light intensity knob

3. USB cable

4. Focusing knob

5. Objective lens

6. LED

7. Stand bracket

8. Flexible neck

9. Locking lever

10. Suction cup

■ Product Specifications

Connection Type	USB 2.0
Effective Magnification (using a 17" monitor)	60x, 250x
Effective Viewing Area	5.6 x 4.2mm (60x) 1.4 x 1.1mm (250x)
Illumination	Four LEDs
Sensor	CMOS
Maximum Snapshot Resolution	1600 x 1200 pixels (UXGA)
Maximum Video Capture Resolution	640 x 480 pixels (VGA)
Size	1.2"x1.2"x3.4" (30x30x86mm)
Weight	3.5 oz. (99g)

■ Software Installation

■ Windows Based PCs

1. Insert the include CD into the CD-ROM drive of the computer.

2. Double click the "Digital Viewer.exe" icon located on the CD.



3. Follow the Digital Viewer setup wizard to install the application software for the Digital Microscope.

■ Mac OS X Based PCs

1. Insert the included CD into the CD-ROM drive of the computer.

2. Double click the "Digital Viewer.dmg" icon located on the CD.



3. Drag the Digital Viewer icon into the Applications folder.



■ Getting Started

■ Connecting the Device

Connect the device to the computer using the included USB cable.

■ Starting the Digital Viewer Software

■ Windows Based PCs

The Digital Viewer software can be launched by double clicking the Digital Viewer icon from the desktop, or from the start menu (Start > All Programs > Digital Viewer > Digital Viewer).



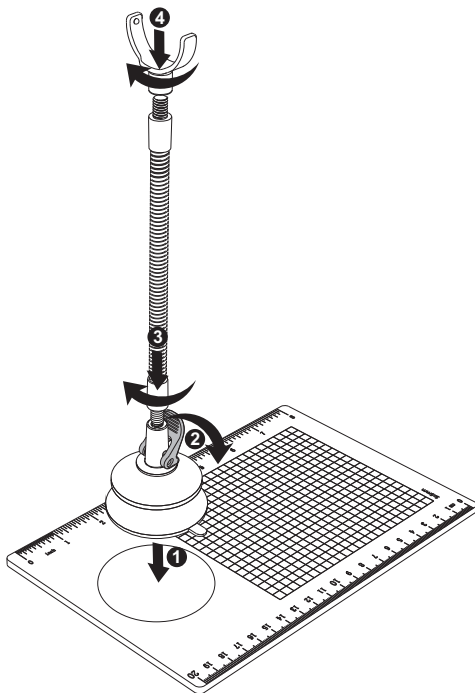
■ Mac OS X Based PCs

The Digital Viewer software can be launched by double clicking the Digital Viewer icon from the Applications menu.



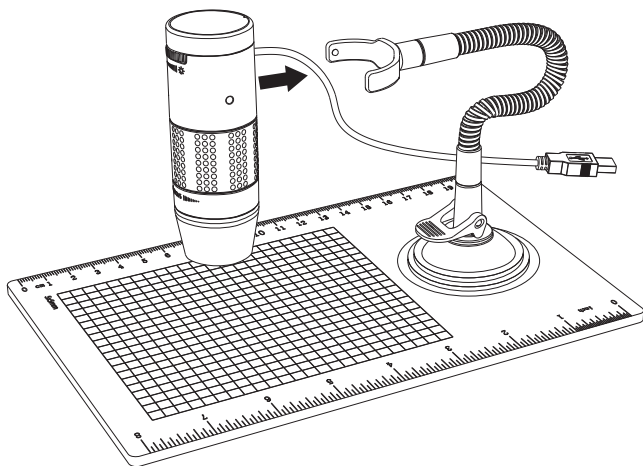
■ Assembling the Stand

1. Screw the stand bracket and the suction cup base onto the flexible neck, as shown in the diagram below.
2. Make sure that the mounting surface is free from oil and dirt and that the locking lever is in the vertical position.
3. Press the suction cup down onto the surface and secure it into place by pushing the locking lever down.



■ Attaching the Microscope to the Stand

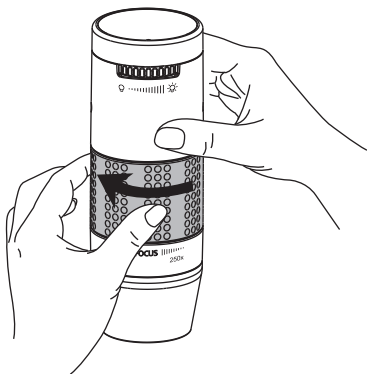
Secure the microscope to the stand as shown below.



■ Focusing

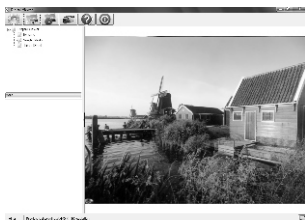
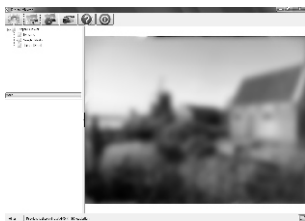
■ Preparation

Rotate the focusing knob to the left (clockwise) to the furthest position.



■ Viewing an Object at a Distance or on the Stand

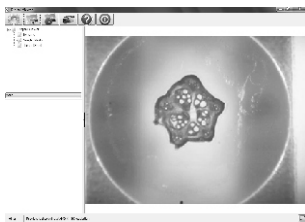
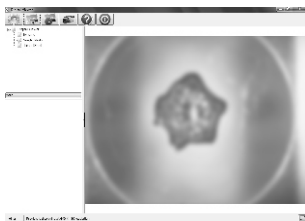
From the preparation position, rotate the focusing knob to the right (counterclockwise) until the image is sharp and clear. The closer the microscope to the object, the higher the magnification power.



■ 60x Magnification (17" monitor)

Place the microscope directly on top of an object or specimen slide.

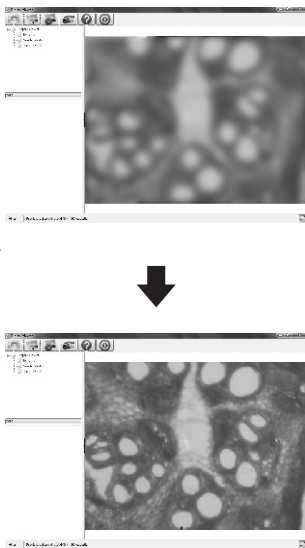
From the preparation position, rotate the focusing knob to the right (counterclockwise) until the first focal point has been reached where the image is sharp and clear. Magnification of 60x can be achieved when viewing on a 17" monitor.



■ 250x Magnification (17" monitor)

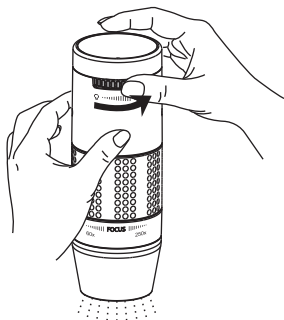
Place the microscope directly on top of an object or specimen slide.

From the preparation position, rotate the focusing knob to the right (counterclockwise) until the second focal point has been reached where the image is sharp and clear. Magnification of 250x can be achieved when viewing on a 17" monitor.

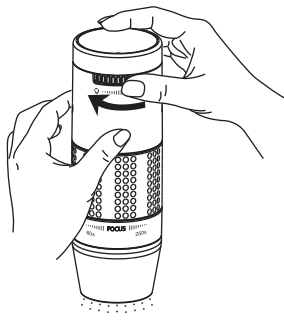


■ Adjusting the LED Light Intensity

Rotate the light intensity knob clockwise and counterclockwise to increase or decrease the LED light intensity respectively.



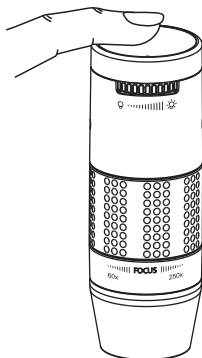
Increasing the LED
light intensity



Reducing the LED
light intensity







■ Taking a Snapshot

The snapshot button is touch-sensitive. Touch the snapshot button located on top of the device to take a snapshot.



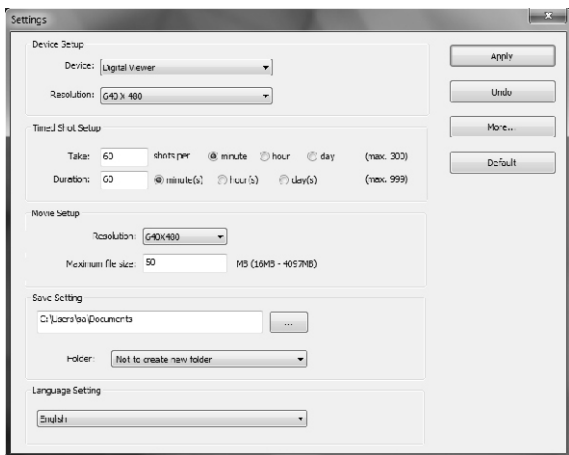
■ Using the Digital Viewer Software

The following buttons are available:

	Clicking this will open the system settings menu (see next section).
	Clicking this will capture the on screen image of the device.
	Clicking this will activate or deactivate the timed shot feature. When activated, images will be captured at a regular interval.
	Clicking this will activate or deactivate the video recording feature.
	Clicking this will show the copyright and version information of the application software.
	Clicking this will shut down the application software.

■ System Settings Menu

The first time the Digital Viewer software is started, the default settings will be loaded. You may change these settings manually in the system settings menu.



■ **Device Setup**

If the image captured by the Digital Microscope was not displayed by default, you can change this by selecting it from the "Device" drop-down menu.

The resolution of images you capture can be changed using the "Resolution" drop-down menu.

■ **Timed Shot Setup**

The frequency and duration of automatic images captures can be adjusted under this option.

■ **Movie Setup**

The resolution of videos you record can be changed using the "Resolution" menu. You can also set a maximum file size for each video.

■ **Save Setting**

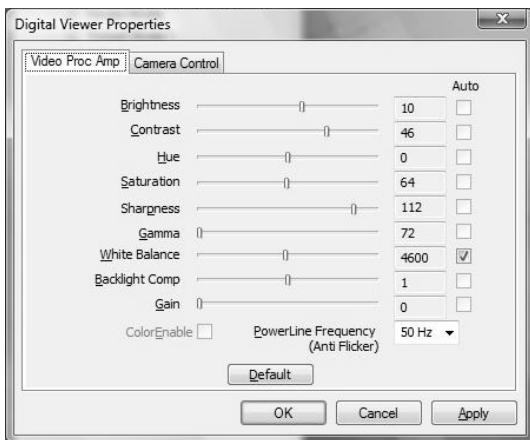
The default location for captured images or videos can be changed under this option.

■ **Language Setting**

The language of the Digital Viewer software can be changed under this option.

■ Advanced Settings

By clicking the "More..." button on the right of the system settings menu, you will be able to manually adjust all of the image settings. Note that the settings available may be different, depending on your operating system.



■ Saved Files

With the Digital Viewer application software opened, you can locate the saved files folder by clicking the "More..." button located on the left of the main software window.



■ Full Screen Viewing

To activate the full screen mode, click the full screen button located on the bottom right hand corner of the Digital Viewer application software window.

To exit full screen mode, either double click on the screen, or press the "Esc" button on the keyboard.

■ Uninstalling the Digital Viewer Software

■ Windows Based PCs

Select "Uninstall Digital Viewer" from the start menu (Start > All Programs > Digital Viewer > Uninstall Digital Viewer).

■ Mac OS X Based PCs

Drag the Digital Viewer application icon from the "Applications" folder to "Trash".

■ Care and Maintenance

- Keep the device dry and protect it from water or moisture.
- Do not leave your device in a place with an extreme high or low temperature.
- Do not touch the device with wet hands as it may damage the device, or cause an electric shock to the user.
- Do not use or store the device in dusty, dirty areas as its moving parts may be damaged.
- Do not use harsh chemicals, cleaning solvents, or strong detergents to clean the device. Wipe it with a soft cloth slightly dampened in a mild soap-and-water solution.

■ Warnings

- Do not place the lighted Digital Microscope upon the eye, doing so may cause permanent eye damage.
- Do not attempt to open or dismantle the Digital Microscope.

Legal information

Intel is a trademark of Intel Corp. in the U.S. and other countries. Mac, Mac OS and OS X are trademarks of Apple Inc., registered in the U.S. and other countries. PowerPC™ and the PowerPC logo™ are trademarks of International Business Machines Corporation, used under license therefrom. Windows is a registered trademark of Microsoft Corporation in the United States and other countries.