



22" **HD** Multi-Touch Drawing Display

12077

TABLE OF CONTENTS

SAFETY WARNINGS AND GUIDELINES	3
PACKAGE CONTENTS	4
FEATURES	4
PEN CHARGING	5
Checking Charge Status	5
Charging the Pen	5
WINDOWS DRIVER INSTALLATION	6
HARDWARE INSTALLATION	9
WINDOWS 7 BASIC SETUP	10
WINDOWS 7 ADVANCED SETUP	17
CONTROLS	19
THE ON-SCREEN DISPLAY (OSD) MENU	20
Luminance Menu	20
Picture Menu	21
Color Menu	22
OSD Settings Menu	23
Setup Menu	24
REPLACING THE PEN TIP	25
TECHNICAL SUPPORT	25
TROUBLESHOOTING	26
SPECIFICATIONS	27

SAFETY WARNINGS AND GUIDELINES

- Do not place the monitor on an unstable surface where it could fall and cause either personal injury or damage to the monitor and/or other equipment.
- Do not expose the monitor to water or moisture of any kind. Do not place objects containing moisture, such as a glass or vase, where it could tip over and spill into or onto the monitor.
- If the monitor is exposed to water or moisture, immediately unplug it from its power source and allow it to completely dry out before reapplying power.
- Do not block the ventilation holes in the monitor's casing. Do not place the monitor in a confined space with inadequate ventilation.
- Do not expose this device to fire or other heat sources. Do not install it on or near heat sources, such as ventilators, radiators, or near a fireplace. Do not place objects with open flame, such as lit candles, on or near this device.
- Do not place or install this monitor in an area where it can be exposed to excessive amounts of dust, humidity, oil, smoke, or combustible vapors. Periodically check the ventilation holes to ensure they do not become clogged with dust, debris, or nearby items.
- The power supply for this monitor uses a NEMA 5-15 three prong, grounded plug. Do not use a "cheater" plug or otherwise bypass the grounding pin.
- Unplug the monitor if it will go unused for a long period of time.
- Prior to operation, check the unit and power cord for physical damage. Do not use if physical damage has occurred.
- Before plugging the unit into a power outlet, ensure that the outlet provides the same type and level of power required by the device.
- Take care to prevent damage to the power cord. Do not allow it to become crimped, pinched, walked on, or become tangled with other cords.
- When disconnecting the power cord do not pull on the cord itself. Instead, grasp the plug connector head to disconnect it from the power socket.
- Unplug the monitor before performing any cleaning.
- Clean only using a soft, dry cloth. Do not use chemical cleaners, solvents, or detergents. For stubborn deposits, moisten the cloth with warm water.
- This monitor has no user serviceable parts. Do not open the case or otherwise attempt to modify this monitor.
- Do not leave a single image on the display for a long period of time. Doing so could cause "burn-in" of the image. It is recommended to use a variable desktop background and to use a screen saver to prevent "burn-in". Alternatively, ensure that the monitor is power off for at least 2 hours out of every 12.

PACKAGE CONTENTS

After receiving the product, please inventory the contents to ensure you have all the proper parts, as listed below. If anything is missing or damaged, please contact Monoprice Customer Service for a replacement.

- 1x 22" IPS multi-touch drawing display
- 1x Angle adjustment bracket
- 4x Bracket mounting screws
- 1x DVI cable
- 1x Special USB cable
- 1x AC power adapter
- 1x AC power cord
- 1x Pen stylus
- 1x Pen charger
- 1x Pen tip removal tool
- 3x Spare pen tips
- 1x CD-ROM containing drivers
- 1x User's manual

FEATURES

- 22-inch class LED backlit IPS capacitive panel with extended viewing angles (170° horizontal, 160° vertical)
- Capacitive panel with 10-point touch and pen stylus inputs
- 1920 x 1080p native resolution
- Windows 8.1 compatible
- Three fixed color temperature settings (6500K, 7500K, 9300K)
- Screen protector preinstalled at the factory
- Rechargeable pen stylus
- VESA mount compatible (75 x 75)
- Angle adjustable stand, from 10-85° from horizontal

PEN CHARGING

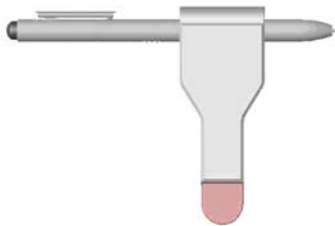
This display includes a rechargeable pen stylus for pen input. The pen stylus must be charged before use. Carefully remove the pen stylus and the pen charger from the plastic packaging.

Checking Charge Status

1. Tap the tip on a desk or other surface to turn the pen on.
2. Observe the charge LED inside the button. If it is Blue, the pen has a usable charge. If it is red or does not illuminate at all, the pen needs charging.

Charging the Pen

1. Locate the direction arrow indicators on the pen charger. The arrows indicate the direction to insert the pen.
2. Insert the pen into the opening at the end of the pen charger in the indicated insertion direction. Align the pen's pocket clip with the key slot and insert until the pocket clip fits into the key. The yellow band on the pen will be at the edge of the pen charger.

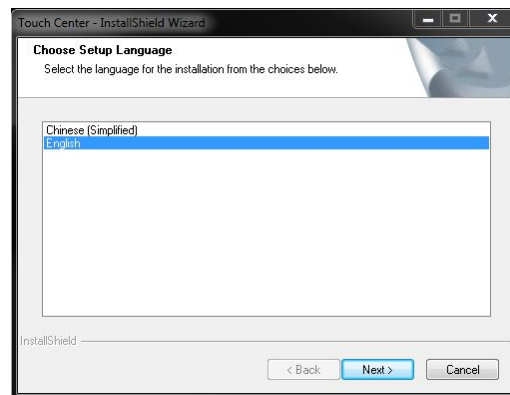


3. Remove the cap from the USB plug and plug the pen charger into an available USB power source, such as a computer port, wall charger, etc.
4. When it is plugged into a valid USB power source, the indicator in the pen charger will glow red.
5. While it is being charged, the charge indicator in the pen will glow red. When charging is complete, the pen's charge indicator will turn off.

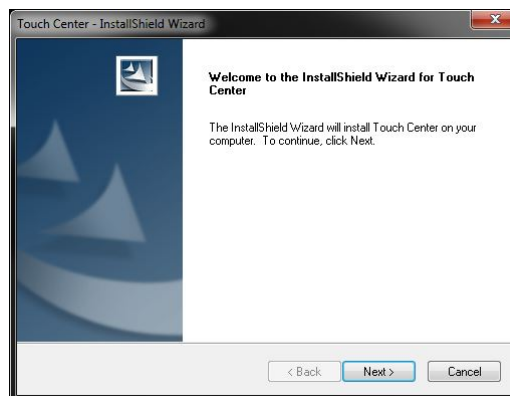
WINDOWS DRIVER INSTALLATION

IMPORTANT: The drivers should be installed before connecting the Drawing Display to your computer!

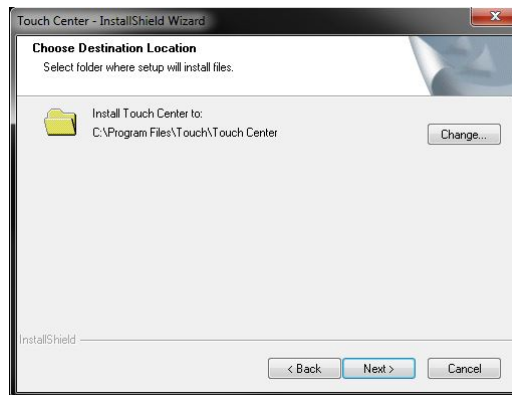
1. Prior to installing the driver, uninstall any pen or tablet software and drivers that you may have previously used on this computer. Multiple pen/tablet drivers will cause a conflict and unexpected operation. Reboot your computer after uninstalling the driver(s).
2. Insert the included CD-ROM disc into the optical drive on your computer.
3. If you have Autostart enabled, the setup program should start automatically. If it does not, open File Explorer, locate the Setup.exe file on the CD, and double click the file to launch the setup program.
4. You are first asked to select the language for the installation program. Select **English** and click the **Next** button to continue.



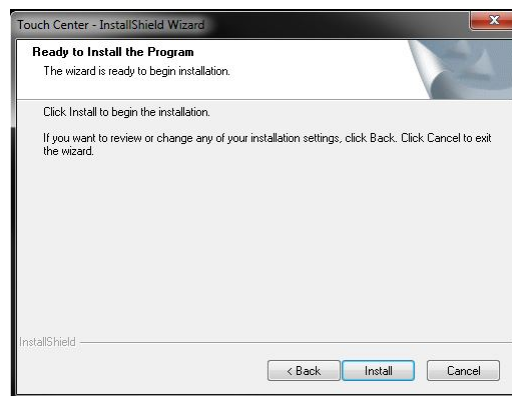
5. Click the **Next** button to continue.



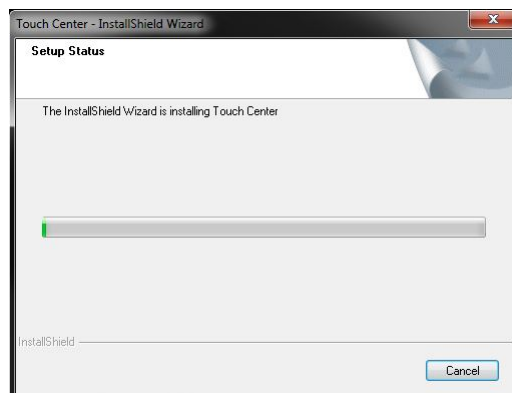
6. If you want to install to a directory other than the default, click the **Change** button and locate the desired installation directory. Otherwise, click the **Next** button to continue.



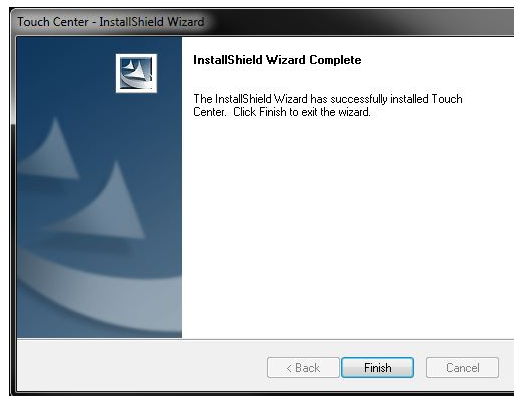
7. Click the **Install** button to begin the driver installation.



8. The progress bar usually moves slowly at first, then speeds up towards the end of the installation.



9. Click the **Finish** button to complete the driver installation.



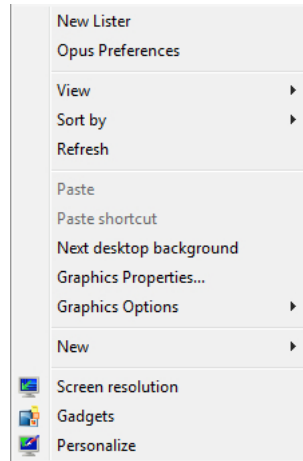
HARDWARE INSTALLATION

This installation process assumes you will be using the included angle adjustment bracket. If you will be mounting the monitor to a wall or desk bracket, follow the instructions that came with your bracket, replacing steps 3-4 below. This monitor features a 75x75 VESA mounting pattern.

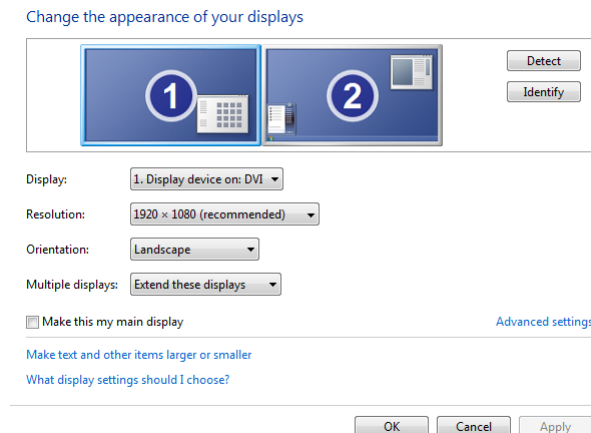
1. Place a towel or blanket on a flat surface, such as a table or the floor.
2. Place the monitor face down on the towel or blanket with the top of the monitor closest to you.
3. Pull the silver lever at the top of the angle adjustment bracket to unlock the bracket's position locking mechanism. Open the bracket so you have access to the screw holes.
4. Place the bracket over the screw holes on the back of the monitor. Insert the four screws and tighten them using a #2 Philips screwdriver (not included). Note that you will likely need to readjust how much the bracket is opened to access all the screws.
5. While the monitor is still on its face, plug one end of the included DVI cable into the DVI port on the monitor. Alternatively, plug a High Speed HDMI cable (not included) into the HDMI port or plug a VGA cable (not included) into the VGA port.
6. One end of the included special USB cable has two plugs, while the other end has just a single plug. Plug the single plug end of the USB cable into the USB port on the monitor.
7. Plug the DC connector on the AC adapter into the DC12V port on the monitor.
8. Position the monitor on your desk where desired. Pull the silver lever at the top of the angle adjustment bracket and adjust the angle to a comfortable viewing angle. Release the lever to lock the angle into place.
9. Ensure your computer is powered off before connecting the monitor. Power it down if necessary.
10. Plug the loose end of the DVI cable into the DVI port on your computer. Alternatively, plug the loose end of the HDMI cable into the HDMI port or plug the loose end of the VGA cable into the VGA port on your computer.
11. Plug both of the USB plugs into available USB ports on your computer.
12. Plug the included AC power cord into the AC adapter, then plug the other end into a nearby AC power outlet.
13. Turn on your computer and let it boot into the operating system.
14. If you are using Windows 8, you can begin using the monitor right away. If you are using Windows 7, you will need to perform at least the Basic Setup, if not also the Advanced Setup, as documented in the following sections.

WINDOWS 7 BASIC SETUP

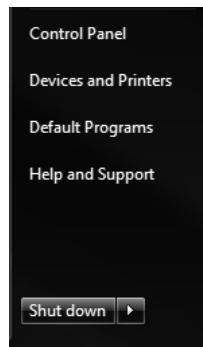
1. If this is part of a multi-monitor setup, right-click on the desktop to access the menu. Select the **Screen Resolution** entry. If not, skip ahead to step 3.



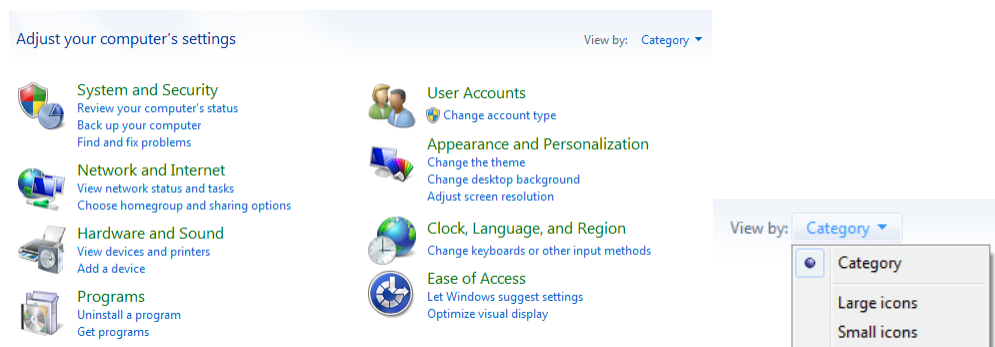
2. Using the following dialog, drag the monitors to the relative positions you desire. Note that if you want to use the Windows *Tablet Input Panel*, which allows you to use the pen stylus instead of typing, you must make the Drawing Display the Main Display. If this is the case, click the check box to the left of **Make this my main display**. Click the **OK** button when you have it the way you want.



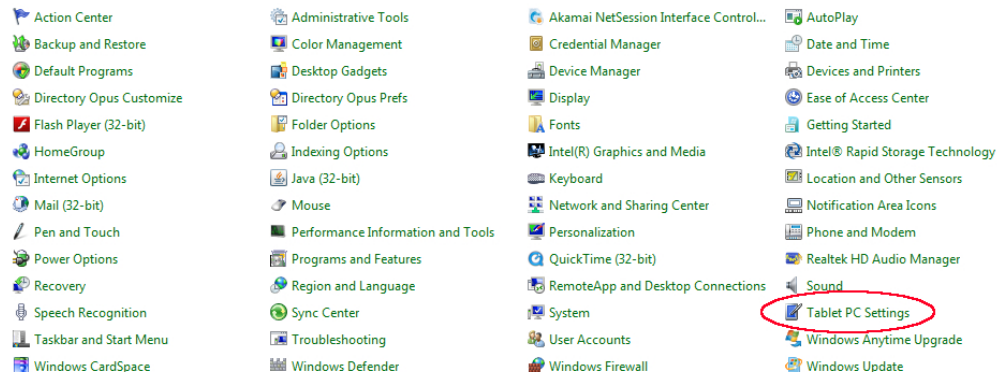
3. Click the **Start** menu, then click the **Control Panel** entry.



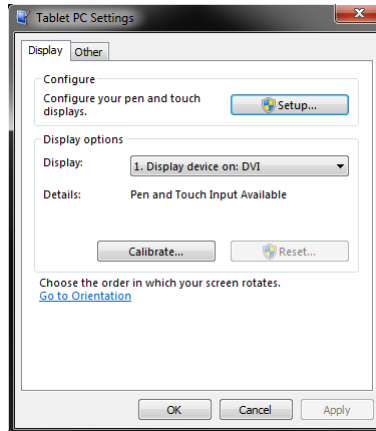
4. If your Control Panel display resembles the following, click the **View By: Category** link and select **Small Icons**



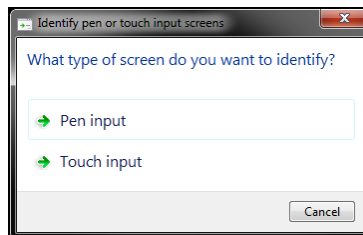
5. Click the **Tablet PC Settings** option.



6. If the monitor is installed and operating properly, the details section of the Tablet PC Settings dialog will indicate "Pen and Touch Input Available", as shown in the following image. If the **Reset...** button is NOT grayed out, click it to clear any previous calibration data. Once the **Reset...** button is grayed out (as shown below), click the **Setup** button.



7. Click the **Pen input** selection.

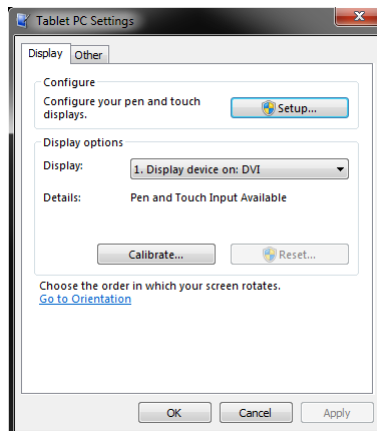


8. Both screens will turn white and the following text will appear on one of them. If the text is NOT on the drawing display, press the **ENTER** key to move the text to the other screen. Once the text is on the drawing display, tap the screen with the tip of the pen stylus to clear the text and white screen.

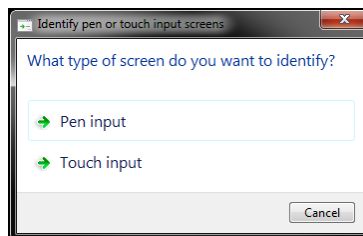
Tap this screen with your tablet pen to set it as the Tablet PC screen.

If this is not the Tablet PC screen, press Enter to move to the next screen. To close the tool, press Esc.

9. Click the **Setup** button in the Tablet PC Settings dialog again.



10. This time, click the **Touch input** selection.

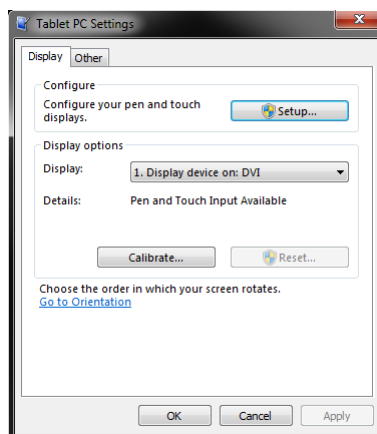


11. Once again, both screens turn white and the following text appears. If the text is NOT on the drawing display, press the **ENTER** key to move the text to the other screen. Once the text is on the drawing display, tap the screen with the tip of your finger to clear the text and white screen.

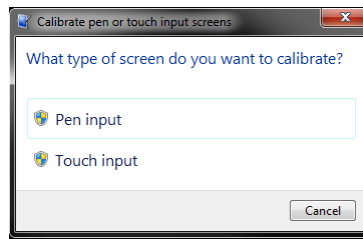
Touch this screen to identify it as the touchscreen.

If this is not the Tablet PC screen, press Enter to move to the next screen. To close the tool, press Esc.

12. Click the **Calibrate...** button in the Tablet PC Settings dialog.



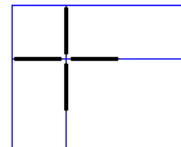
13. Click the **Pen input** selection.



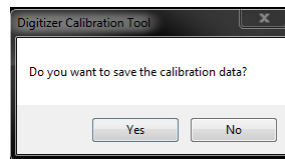
14. The drawing display's screen will turn white and the following text will be displayed. Note the parallel blue lines at the top, bottom, and on each side of the screen. The intersections of these lines are the calibration points. A black crosshair appears on the upper leftmost intersection. Carefully click the pen tip in the middle of the crosshairs. Repeat for each of the other 15 calibration points.

To provide calibration samples, tap the crosshair each time that it appears on the screen.

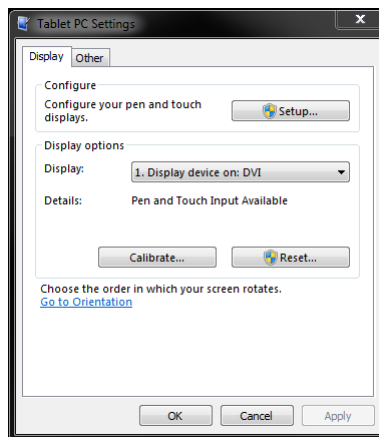
Right-click anywhere on the screen to return to the last calibration point. Press the Esc button to close the tool. Do not change your screen orientation until you have completed the calibration process.



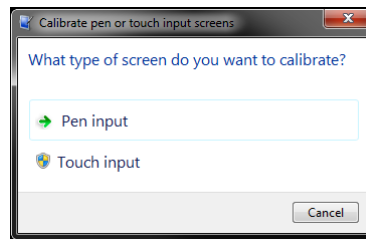
15. You will be prompted to save the calibration data. Click the **Yes** button.



16. Note that the **Reset...** button in the Tablet PC Settings dialog is now no longer grayed out, indicating that calibration data has been saved. Click the **Calibrate...** button again.



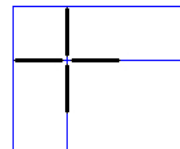
17. This time, click the **Touch input** selection.



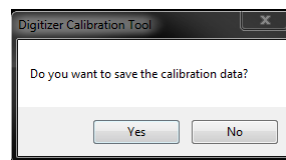
18. Once again, the screen will turn white and the following text will be displayed. Using your finger, carefully tap the center of the crosshairs for each of the 16 calibration points.

To provide calibration samples, tap the crosshair each time that it appears on the screen.

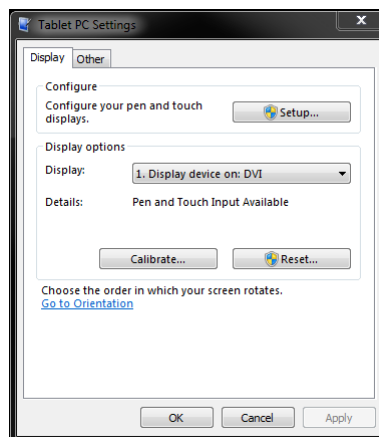
Right-click anywhere on the screen to return to the last calibration point. Press the Esc button to close the tool. Do not change your screen orientation until you have completed the calibration process.



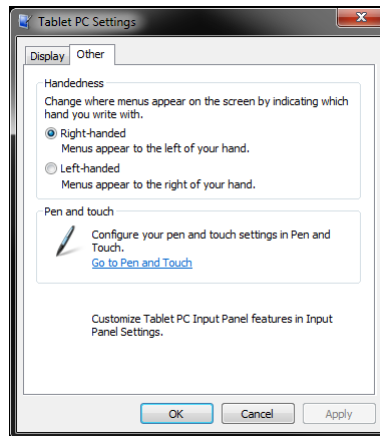
19. You will be prompted to save the calibration data. Click the **Yes** button.



20. Click the **Other** tab.



21. Depending on which hand you use to draw, click the radio button next to either the **Right-handed** or **Left-handed** entry. Click **OK** to save your settings.

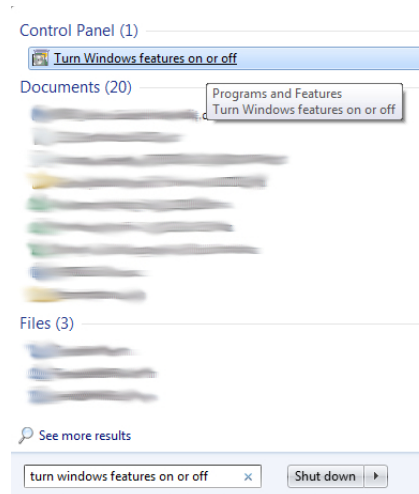


22. Your drawing display is now installed, calibrated, and ready for use!

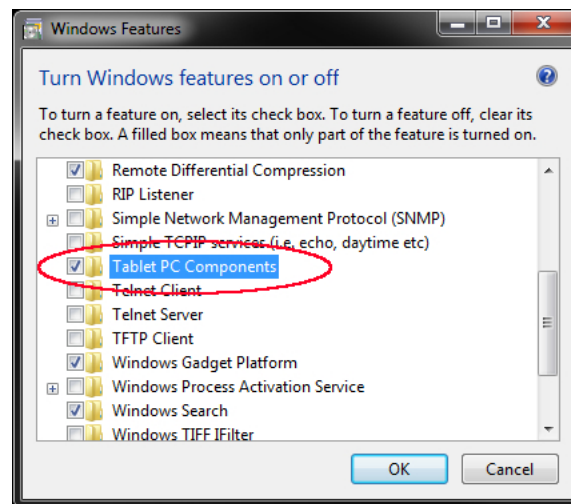
WINDOWS 7 ADVANCED SETUP

To get maximum functionality from the drawing display, you may want to use some of the pen and touch features built into Windows 7, such as the *Tablet PC Input Panel*, which allows you to convert your handwriting into typed text. If you wish to enable this feature, perform the following steps, otherwise skip this section.

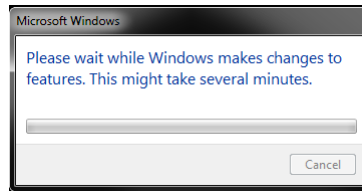
1. Click the **Start** menu, then type **Turn Windows features on or off** into the search box. Click the **Turn Windows features on or off** link.



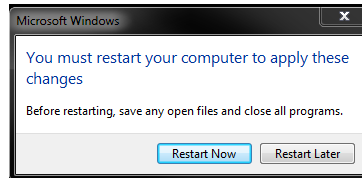
2. Scroll down and ensure that there is a check mark in the box next to the *Tablet PC Components* entry. If it is not there, click in the box. Click the **OK** button when finished.



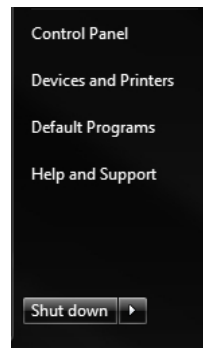
- Wait for the changes to complete.



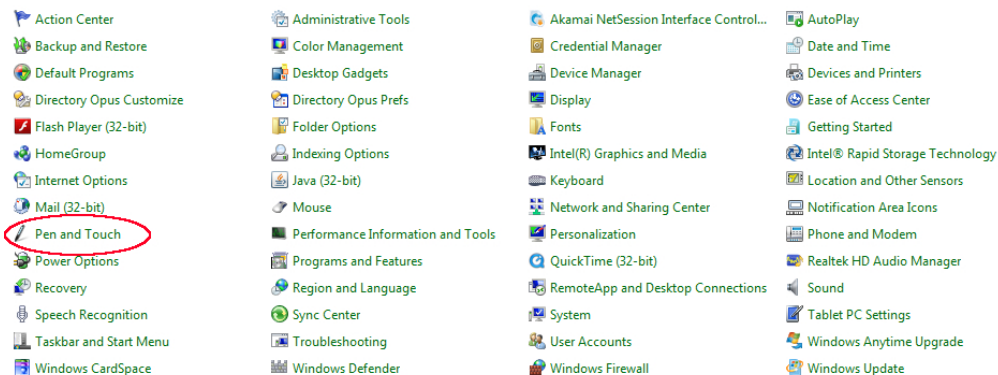
- You may be prompted to restart your computer. If so, close all open programs, then click the **Restart Now** button.



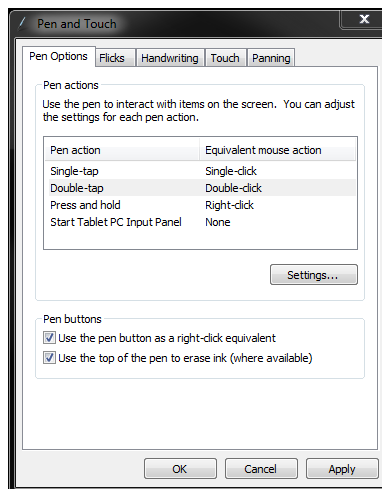
- Once your computer has restarted, click the **Start** menu, then click the **Control Panel** entry.



- Click the **Pen and Touch** option.



7. Use this dialog to control the behavior of various pen and touch features, such as how quickly you have to double-tap to register a double-click action and how long you have to hold your finger on the display to register a right-click action. Click the **OK** button when you are finished.



CONTROLS

The monitor's controls are on the lower right corner of the display bezel. The five buttons have the following functions:



- A:** When using the VGA input, pressing the **A** button automatically adjusts the display to the optimal settings. When in any menu, pressing the **A** button selects the currently highlighted entry for editing or sets the currently highlighted value.
- :** Pressing the **-** button displays the Input Selection menu. When in any menu, pressing the **-** button scrolls the highlight down or decreases the currently selected value.
- +:** Pressing the **+** button displays the Brightness control. When in any menu (including the Brightness control), pressing the **+** button moves the highlight up one position or increases the currently selected value.
- M:** Pressing the **M** button displays the OSD menu. When in any menu, pressing the **M** button backs up to the previous menu or closes the menu, if already at the first page.
- Power:** Pressing the **Power** button turns the monitor on and off.

THE ON-SCREEN DISPLAY (OSD) MENU

The OSD menu allows you to adjust various monitor settings. To access the OSD menu, press the **M** button when no other menus or controls are being displayed.

The OSD menu consists of five pages of preference settings. The title of each page is at the top of the dialog and the current video resolution is displayed at the bottom. The pages are, from top to bottom:

Luminance

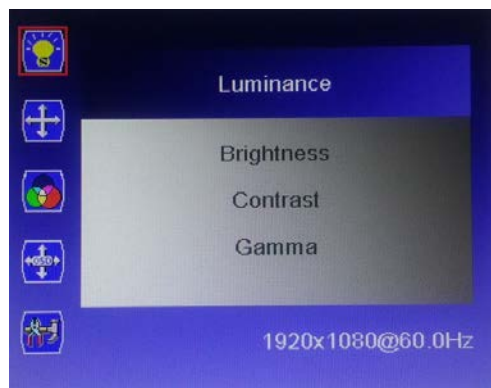
Picture

Color

OSD Settings

Setup

Luminance Menu



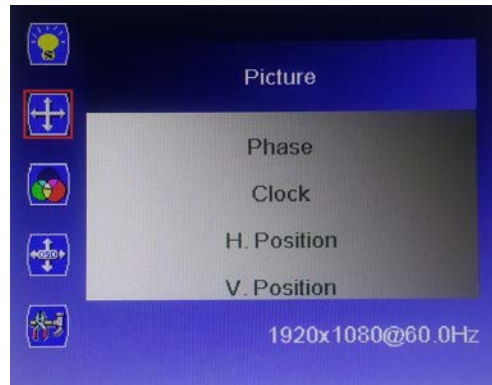
Brightness: Adjusts the brightness of the display. The adjustment range is from 0 to 100.

Contrast: Adjusts the image contrast. The adjustment range is from 0 to 100.

Gamma: Turns gamma decoding on or off.

Picture Menu

Note that the Picture Menu is only available when using a VGA input.



Clock: Allows adjustment of the monitor's Clock frequency. On a grey test screen, an incorrect Clock setting will manifest itself as large vertical lines and the display may have an incorrect width. The Clock should be corrected before attempting to correct the Phase.

Phase: Allows adjustment of the monitor's Phase setting. On a grey test screen, an incorrect Phase setting will manifest itself as a series of horizontal lines. The Clock should be corrected before attempting to correct the Phase.

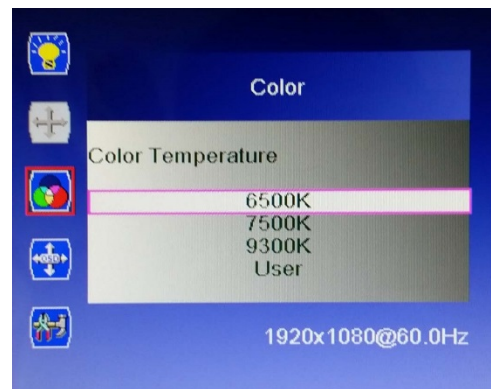
H.Position: Allows adjustment of the horizontal position of the image on the screen.

V.Position: Allows adjustment of the vertical position of the image on the screen.

Color Menu



Color Temperature: Allows you to select a fixed color temperature value (6500K, 7500K, or 9300K) or select the User setting to allow adjustment of the individual Red, Green, and Blue levels.

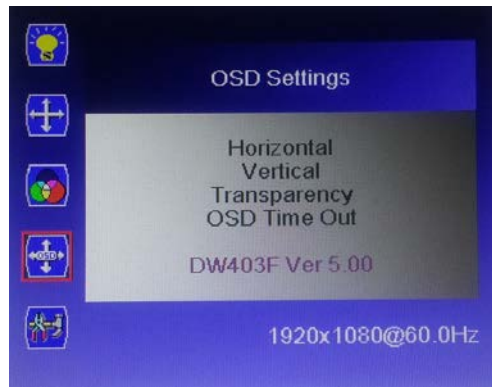


Red: When the Color Temperature is set to User, you can edit the red level in the image. The adjustment range is from 0 to 100.

Green: When the Color Temperature is set to User, you can edit the green level in the image. The adjustment range is from 0 to 100.

Blue: When the Color Temperature is set to User, you can edit the blue level in the image. The adjustment range is from 0 to 100.

OSD Settings Menu



Horizontal: Adjusts the horizontal position of the OSD menu on screen. The adjustment range is from 0 to 100.

Vertical: Adjusts the vertical position of the OSD menu on screen. The adjustment range is from 0 to 100.

Transparency: Adjusts how opaque or transparent the OSD menu will appear on screen. The adjustment range is from 0 (opaque) to 4 (transparent). The default is 0.

OSD Time Out: Adjusts how long the OSD will continue to display with no input. The adjustment range is from 5 to 60 seconds. The default is 5 seconds.

Setup Menu



Language: Allows selection of the language to use in the OSD menu. The available options are English, Spanish, French, German, Italian, Portuguese, Korean, and Chinese. The default is English.



Input: Allows selection of which video input to use, VGA, DVI, or HDMI.

Reset: Resets the monitor to its default settings.

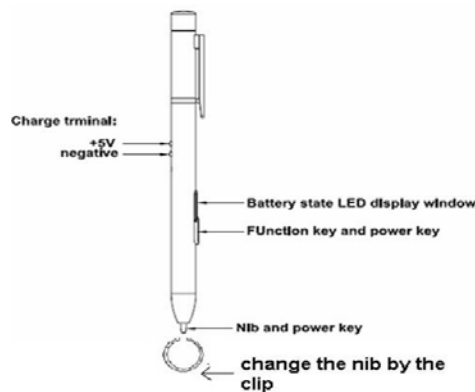
Display Size: Allows you to set the Aspect Ratio. The available options are Full Screen and 4:3. The default is Full Screen.



REPLACING THE PEN TIP

This monitor includes three replacement pen tips and a pen tip removal tool. To replace the pen tip, perform the following steps:

1. Position the pen tip removal tool over the pen tip, with the tip positioned in the notch on one side of the opening.
2. Squeeze the pen tip removal tool to firmly grasp the pen tip.
3. While still squeezing, carefully pull the tip out of the pen body.
4. Insert the replacement tip into the pen body.
5. Put pressure on the tip to seat it in place.



TECHNICAL SUPPORT

Monoprice is pleased to provide free, live, online technical support to assist you with any questions you may have about installation, setup, troubleshooting, or product recommendations. If you ever need assistance with your new product, please come online to talk to one of our friendly and knowledgeable Tech Support Associates. Technical support is available through the online chat button on our website (www.monoprice.com) during regular business hours, 7 days a week. You can also get assistance through email by sending a message to tech@monoprice.com

TROUBLESHOOTING

Problem: There is no picture on the screen and none of the LEDs are illuminated.

Solutions:

1. Verify that the AC adapter is properly plugged into the monitor and an AC power source.
2. Verify that the AC power source is live by plugging a different device into it.

Problem: The power LED is illuminated, but there is no picture on the screen.

Solutions:

1. Verify that you have the correct video input selected.
2. Verify that the video cable is securely connected to both the monitor and the video source.
3. Try using a different video cable.
4. Try using a different video source.

Problem: The video is lower quality than 1920x1080p.

Solutions:

1. Check the native resolution of your primary display.
2. Check the resolution settings in Control Panel to ensure that it is set to 1920x1080.

Problem: I get pen input, but no touch input.

Solutions:

1. Ensure that you are using the double-headed USB cable that came with the monitor.
2. Ensure that both USB connectors on the double-headed end are plugged into USB ports on your computer (not on a hub).

Problem: The pen is not charging.

Solutions:

1. Ensure that the pen is properly seated in the pen charger. The pen clip should align with and insert into the key slot on the charger, resulting in the yellow band around the pen being at the edge of the charger.
2. Ensure that the pen charger is plugged into an active, powered USB port (when plugged into a live source, the LED inside the charger will glow red).

SPECIFICATIONS

Panel Size	21.5 inches
Display Area	18.8" x 10.6" (476.64 x 268.11 mm)
Maximum Resolution	1920 x 1080p @ 60Hz
Aspect Ratio	16:9
Brightness	250 cd/m ²
Color Support	16.7 million colors
Response Time	5ms
Dynamic Contrast Ratio	50000:1
Viewing Angles	170° Horizontal, 160° Vertical
Transmittance	85%
Color Temperature	6500K, 7500K, 9300K, or Custom
Video Inputs	DVI, HDMI, VGA
Touch Technology	Capacitive (10 points)
Pen/Touch Interface	USB 2.0
Pen/Touch Resolution	2048 LPI
Pressure Levels	1024 levels
Accuracy	0.5mm (Center), 2mm (Edge)
Stylus Tilt Angle	up to 45° from perpendicular
Report Rate	200 rps
Sensor Height	5-15 mm above screen surface
Tracking Speed (Pen)	133 pps
Tracking Speed (1 Finger)	110 pps
Tracking Speed (10 Fingers)	100 pps
AC Adapter Input Power	100 ~ 240 VAC, 50/60 Hz
AC Adapter Output Power	12 VDC, 3A
Standby Power Consumption	less than 1 watt
Operating Power Consumption	36 watts
Operating Temperature	+32 ~ +104°F (0 ~ +40°C)
Operating Humidity	10 ~ 90% non-condensing
Storage Temperature	-4 ~ +140°F (-20 ~ +60°C)
Storage Humidity	5 ~ 95% non-condensing
Dimensions	20.4" x 12.7" x 1.5" (517.8 x 323.8 x 38.3 mm)
Weight (without stand)	8.4 lbs. (3.8kg)
Weight (with stand)	9.5 lbs. (4.3kg)
Pen Weight	0.7 oz. (20g)
Supported Operating Systems	WinXP, Vista, Win7, Win8