

IIIP



22" 1080p Drawing Tablet Display

User's Manual

14481

CONTENTS

SAFETY WARNINGS AND GUIDELINES	3
INTRODUCTION.....	4
FEATURES.....	5
CUSTOMER SERVICE.....	5
PACKAGE CONTENTS	6
PRODUCT OVERVIEW	6
WINDOWS DRIVER INSTALLATION.....	8
MAC DRIVER INSTALLATION	16
OSD MENU SYSTEM	24
Picture Menu.....	25
Color Menu.....	26
Tracking Menu.....	27
Setup Menu	28
REPLACING THE PEN TIP	29
TROUBLESHOOTING	30
SPECIFICATIONS.....	32
DISPLAY MODES.....	34
REGULATORY COMPLIANCE.....	35
Notice for FCC	35
Notice for Industry Canada.....	36

SAFETY WARNINGS AND GUIDELINES

- Do not place the monitor on an unstable surface where it could fall and cause either personal injury or damage to the monitor and/or other equipment.
- Do not expose this device to excessive vibration.
- Do not subject the product to extreme force, shock, or fluctuations in temperature or humidity.
- This device is intended for indoor use only.
- Do not expose this device to water or moisture of any kind. Do not place drinks or other containers with moisture on or near the device. If moisture does get in or on the device, immediately unplug it from the power outlet and allow it to fully dry before reapplying power.
- Do not touch the device, the power cord, or any other connected cables with wet hands.
- Do not expose this device to excessively high temperatures. Do not place it in, on, or near heat sources, such as a fireplace, stove, radiator, etc. Do not leave it in direct sunlight.
- Do not place or install this device in an area where it can be exposed to excessive amounts of dust, humidity, oil, smoke, or combustible vapors.
- Do not block the ventilation holes in the monitor's casing. Do not place the monitor in a confined space with inadequate ventilation. Periodically check the ventilation holes to ensure they do not become clogged with dust, debris, or nearby items.
- Prior to operation, check the unit and power cord for physical damage. Do not use if physical damage has occurred.
- Before plugging the unit into a power outlet, ensure that the outlet provides the same type and level of power required by the device.
- Take care to prevent damage to the power cord. Do not allow it to become crimped, pinched, walked on, or become tangled with other cords. Ensure that the power cord does not present a tripping hazard.

- Never unplug the unit by pulling on the power cord. Always grasp the connector head or adapter body.
- Ensure that power is turned off and disconnected before making any electrical connections.
- Unplug the monitor before moving it or if it will go unused for an extended period of time.
- Unplug the monitor before performing any cleaning.
- Clean using a soft, dry cloth only. Do not use chemical cleaners, solvents, or detergents. For stubborn deposits, moisten the cloth with warm water.
- This device has no user serviceable parts. Do not attempt to open, service, or modify this device.
- Do not leave a single image on the display for a long period of time. Doing so could cause "burn-in" of the image. It is recommended to use a variable desktop background and to use a screen saver to prevent "burn-in". Alternatively, ensure that the monitor is power off for at least 2 hours out of every 12.
- Keep away from corrosive materials.

INTRODUCTION

Thank you for purchasing this 22" Drawing Tablet Display!

This display combines the functions of a drawing tablet and a monitor in one package! It features a pen touch sensitive display area, allowing you to use the included pen stylus to draw directly on the graphical screen element, which produces more precision and accuracy than using a separate tablet and monitor.

FEATURES

- HDMI®, DVI-I, and VGA video input options
- 1920 x 1080p native resolution
- 16:9 native aspect ratio
- 2048 levels of pressure sensitivity
- 5080 lines per inch resolution
- Angle adjustable stand from 22 ~ 86°
- Pen operates without any internal or external power source
- Compatible with Windows® XP and later and Mac® OS X® 10.2.8 and later

CUSTOMER SERVICE

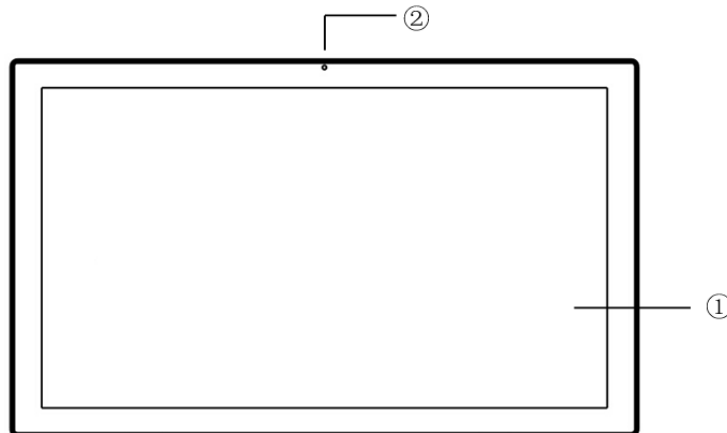
The Monoprice Customer Service department is dedicated to ensuring that your ordering, purchasing, and delivery experience is second to none. If you have any problem with your order, please give us an opportunity to make it right. You can contact a Monoprice Customer Service representative through the Live Chat link on our website www.monoprice.com during normal business hours (Mon-Fri: 5am-7pm PT, Sat-Sun: 9am-6pm PT) or via email at support@monoprice.com

PACKAGE CONTENTS

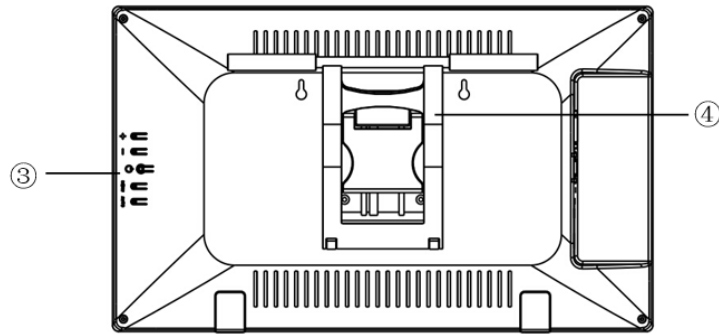
Please take an inventory of the package contents to ensure you have all the items listed below. If anything is missing or damaged, please contact Monoprice Customer Service for a replacement.

- 1x 22" 1080p drawing tablet display
- 1x Pen stylus
- 1x AC power adapter
- 1x AC power cord (NEMA 5-15 to IEC 60320 C13)
- 1x VGA cable
- 1x USB cable
- 1x Drivers CD
- 1x Pen tip removal tool
- 3x Replacement pen tips

PRODUCT OVERVIEW



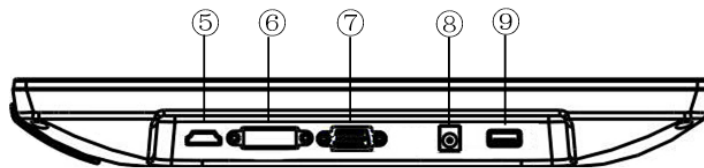
1. Display and pen drawing area
2. Power LED illuminates red when in standby and blue when powered on.



3. Control buttons

- + Increase/Up button
- | Decrease/Down button
- ⏻ Power button
- M Menu/Enter button
- A Auto/Exit button

4. Angle adjustable stand



5. HDMI® video input port

6. DVI-I video input port

7. VGA video input port

8. DC power connector

9. USB port

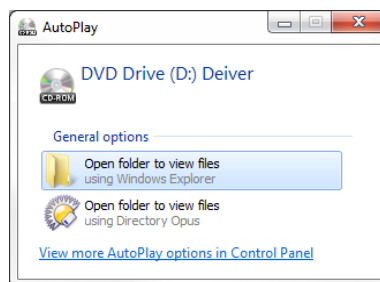
- A. Side button (equivalent to right mouse button)
- B. Top button (eraser function)
- C. Pen tip (equivalent to left mouse button)



WINDOWS DRIVER INSTALLATION

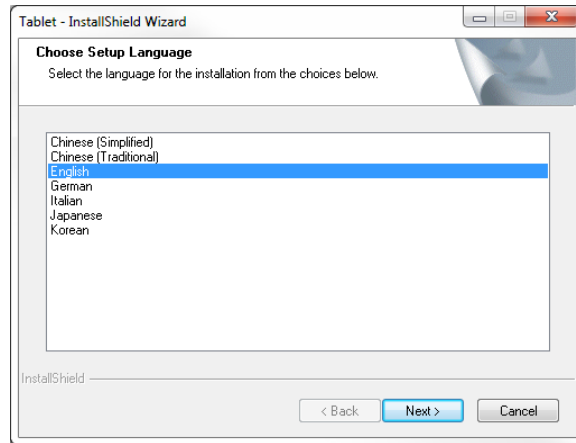
Warning! Do not connect the display to your computer until you are directed to do so in these instructions.

1. Ensure that there are no other pen/tablet drivers installed to your computer. Follow the instructions that came with the other device to uninstall its drivers and any software applications.
2. Insert the included CD into the optical drive. If you have Autorun enabled, the following dialog will appear after a few seconds. Click the *Open folder to view files* option. If Autorun is disabled, use Windows File Explorer to open the CD drive to view the files.

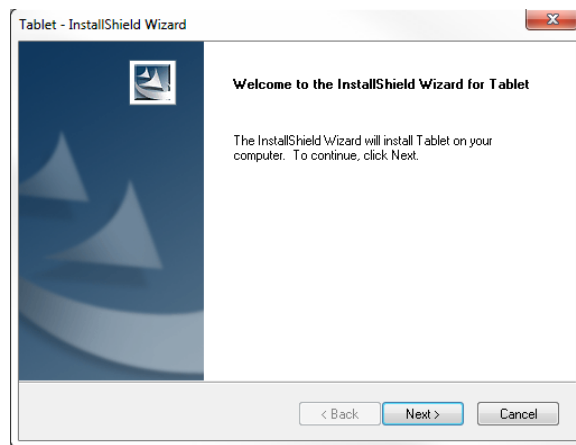


3. Double-click the **setup.exe** file to launch the installer.

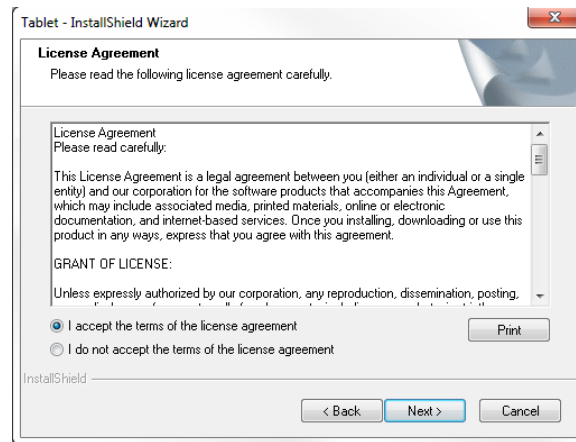
4. Choose your preferred language for the installation wizard from the list of available languages. English is highlighted by default. Click the **Next** button to continue.



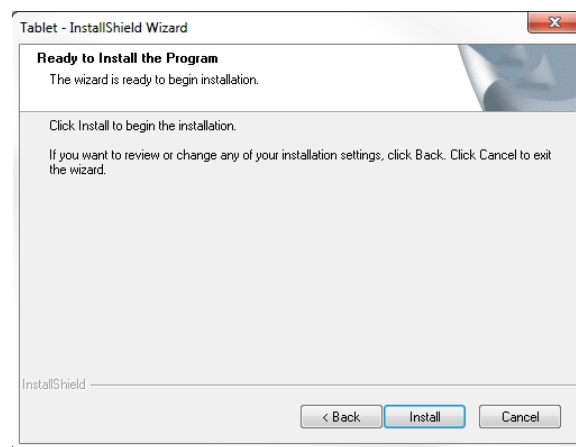
5. The Welcome screen is displayed in your preferred language. Click the **Next** button to continue.



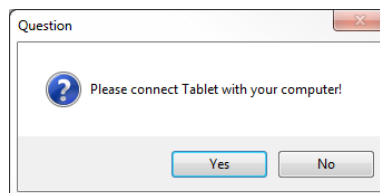
6. Read the License Agreement. If you agree, click the radio button next to the / *accept the terms of the license agreement* option, then click the **Next** button to continue.



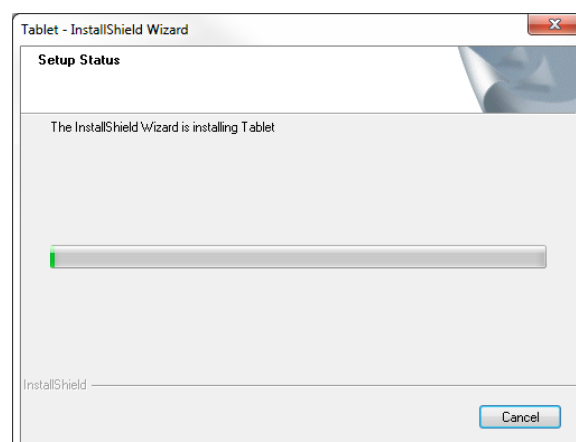
7. Click the **Install** button to continue.



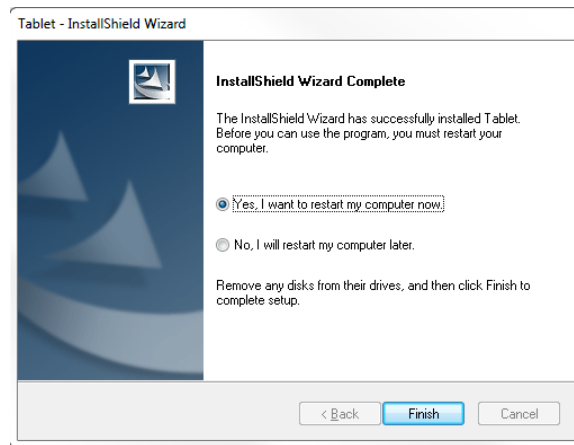
8. The following dialog will appear after clicking the **Install** button. Put a towel or blanket on your work surface, then place the display face down on the towel.



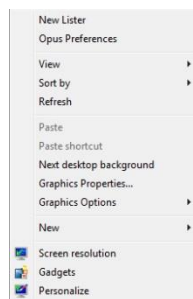
9. Pull the metal tab behind the angle adjustable stand to release the stand lock. Move the stand legs to the desired angle, then release the lever to lock the stand in position.
10. Using the included VGA cable, plug one end into the VGA input port on the display, then tighten the thumbscrews to secure it in place. Plug the other end into the VGA output port on your computer, then tighten the thumbscrews to secure it in place.
Note: Alternatively, you may use an HDMI® cable or DVI cable to connect the display to an HDMI or DVI video output port. Neither an HDMI cable nor a DVI cable is included.
11. Using the included USB cable, plug one end into the USB port on the display, then plug the other end into an available USB port on your computer.
12. Plug the DC barrel connector on the included AC power adapter into the DC power connector on the monitor.
13. Remove the towel and position the monitor on the working surface as normal for use. Follow the instructions in step 9 above to adjust the display angle, as desired.
Note: The display should be at least 10° from vertical to ensure it is stable and will not fall over onto its face.
14. Using the included AC power cord, plug the C13 connector into the AC power adapter, then plug the other end into a nearby AC power outlet. Press the **Power** button to turn the monitor on.
15. Click the **Yes** button on the *Question* dialog from step 8 above to continue with the installation.



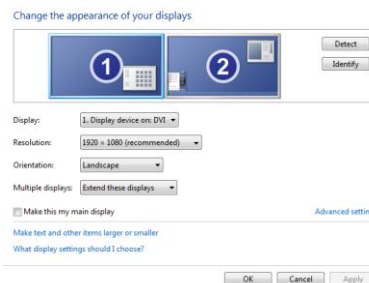
16. Once installation is complete, you will need to restart your computer. Click the **Finish** button to restart your computer now.



17. After your computer has finished restarting, right-click on the desktop to access the menu. Select the **Screen Resolution** entry.

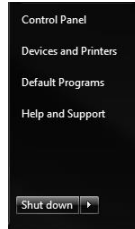


18. Using the following dialog, drag the monitors to the relative positions you desire. Note that if you want to use the *Windows Tablet Input Panel*, which allows you to use the pen stylus instead of typing, you must make the Tablet Display the Main Display. If this is the case, click the check box to the left of **Make this my main display**. Click the **OK** button when you have it the way you want.

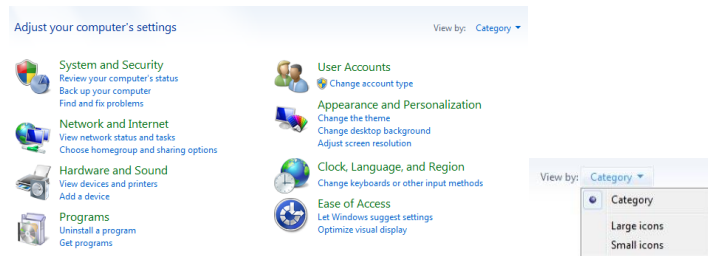


19. If you changed the main display, close the dialogs, then restart your computer. Otherwise, proceed with the next step (20).

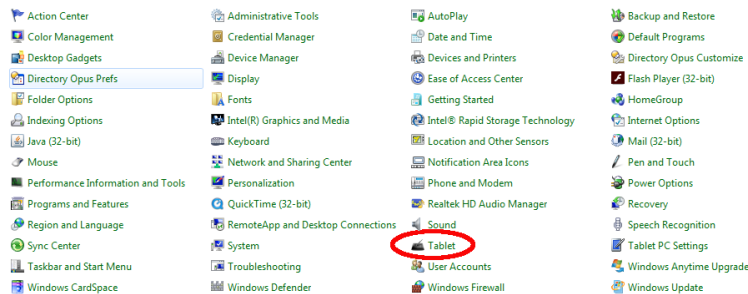
20. Click the **Start** menu, then click the **Control Panel** entry.



21. If your Control Panel display resembles the following, click the **View By: Category** link and select **Small Icons**. Otherwise, proceed with the next step (22).



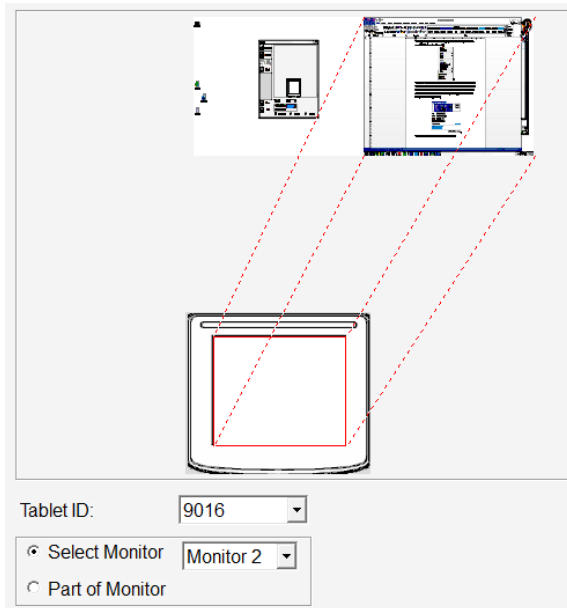
22. Click the **Tablet** option.




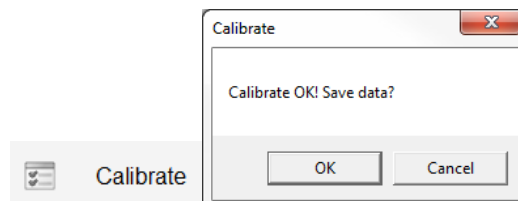
23. Click the **Mapping** button on the left side of the dialog.



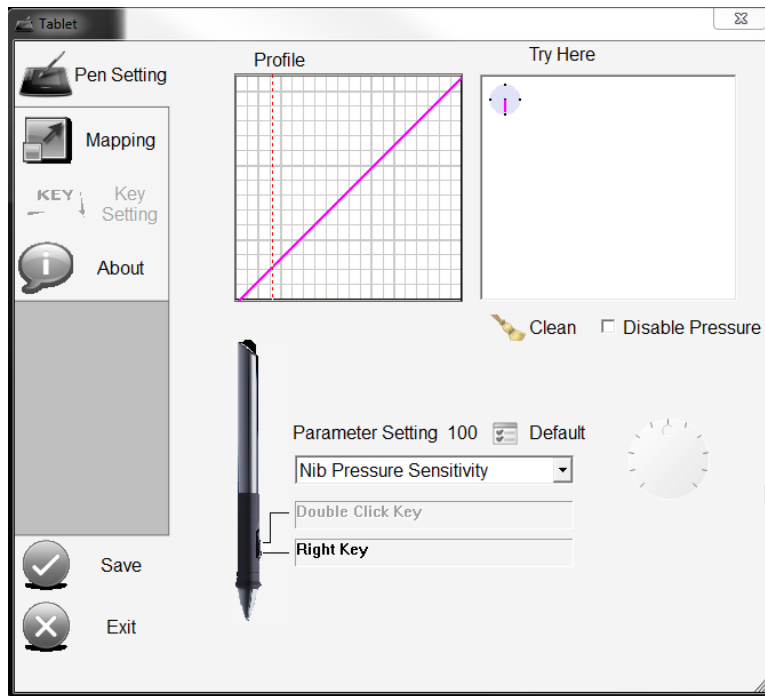
24. If necessary, click the **Select Monitor** radio button, then use the drop down list box to select the Tablet Display.



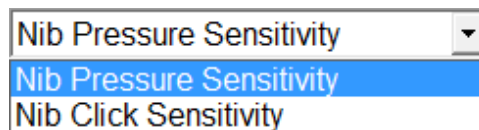
25. Click the **Calibrate** button. A target  graphic will appear in the upper left corner. Using the pen stylus, carefully click the center of the target. Click each of the subsequent three targets in each corner, then click the **OK** button on the *Calibrate* dialog to save the calibration data.



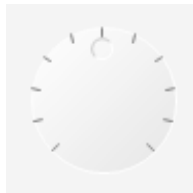
26. Click the **Pen Setting** button. On this screen you can set and test the pen pressure sensitivity, and set the behavior of the side button.



27. Verify that the drop down list box shows **Nib Pressure Sensitivity** (the default). If not, set it to the **Nib Pressure Sensitivity** option.

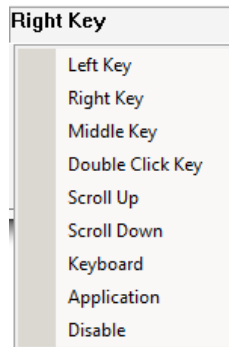


28. Use the pen within the test area labeled *Try Here*. Adjust the sensitivity by dragging the wheel to the right of the drop down list box. To decrease initial sensitivity, drag it clockwise. The *Profile* area will show the sensitivity curve.

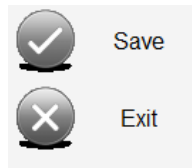


29. Set the drop down list box to **Nib Click Sensitivity** entry. Test the double click speed and adjust by dragging the Sensitivity wheel.

30. Click the **Right Click** entry. The following menu will appear. Click the function you want this button to produce.



31. When you are finished, click the Save button, then click the Exit button.



Congratulations, you are ready to start using your new pen display with your favorite software!

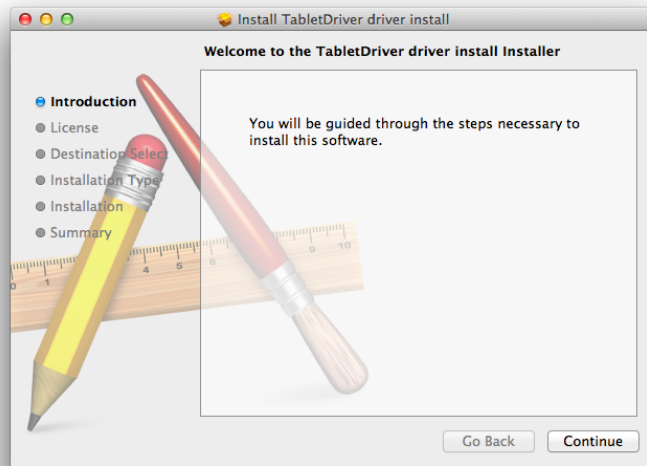
MAC DRIVER INSTALLATION

Warning! Do not connect the display to your computer until you are directed to do so in these instructions.

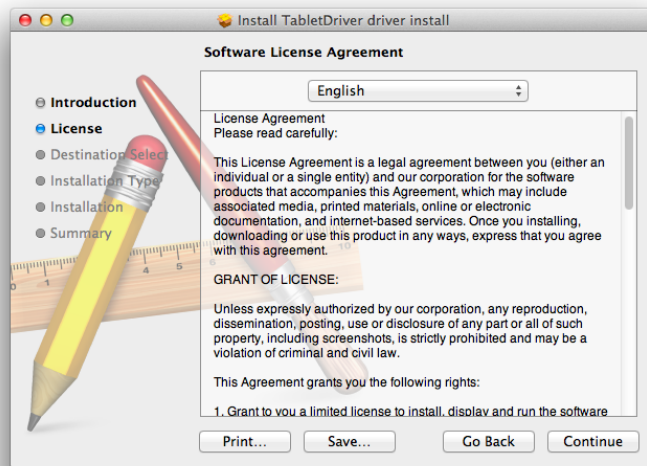
1. Ensure that there are no other pen/tablet drivers installed to your computer. Follow the instructions that came with the other device to uninstall its drivers and any software applications.
2. Insert the included CD into the optical drive. Open the drive in Finder, then locate and double-click the **dmg** disc image file.
3. Double-click the **install.mkpg** file to launch the installer.



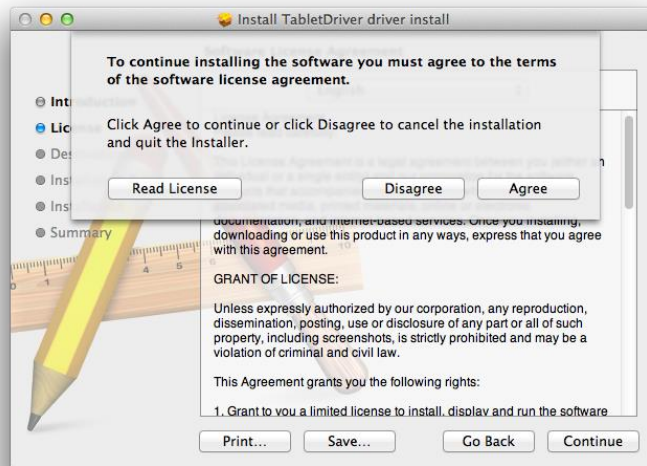
4. Click the **Continue** button to proceed.



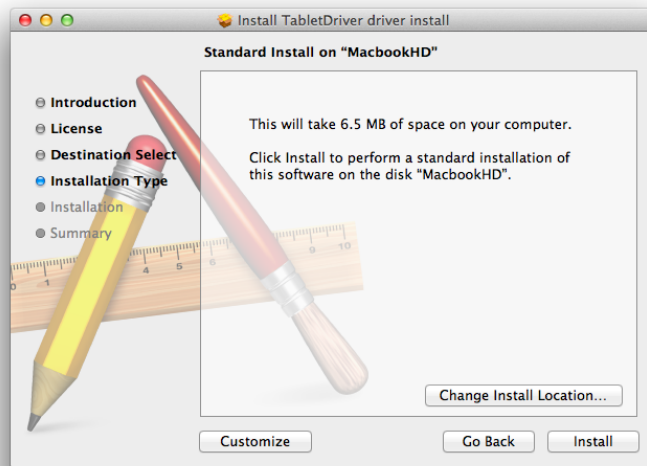
5. Read the license agreement, then click the **Continue** button to proceed.



6. Click the **Agree** button to continue.



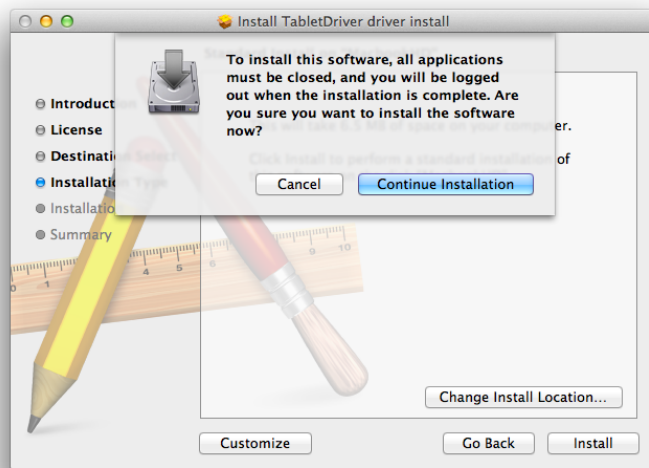
7. Click the **Install** button to continue.



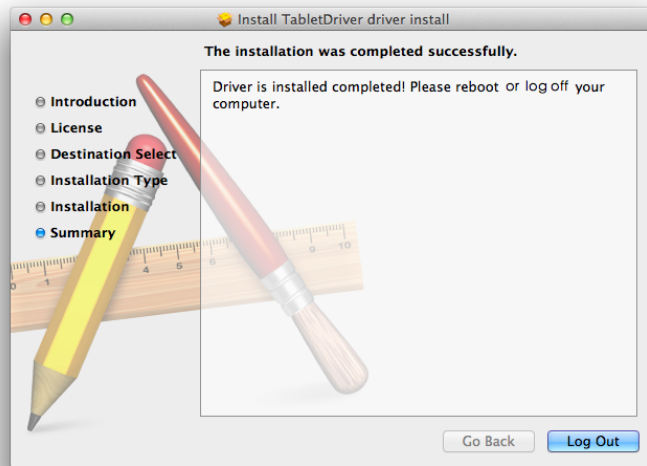
8. Enter your Name and Password, then click the **Install Software** button to continue.



9. Click the **Continue Installation** button to proceed.



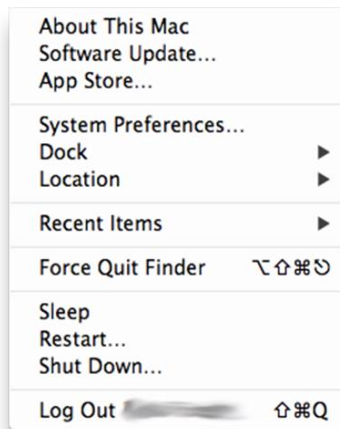
10. Click the **Log Out** button to log out, then turn your Mac® off.



11. Put a towel or blanket on your work surface, then place the display face down on the towel.
12. Pull the metal tab behind the angle adjustable stand to release the stand lock. Move the stand legs to the desired angle, then release the stand lock to lock the stand in position.
13. Using the included VGA cable, plug one end into the VGA input port on the display, then tighten the thumbscrews to secure it in place. Plug the other end into the VGA output port on your computer, then tighten the thumbscrews to secure it in place.
Note: Alternatively, you may use an HDMI® cable or DVI cable to connect the display to an HDMI or DVI video output port. Neither an HDMI cable nor a DVI cable is included.
14. Using the included USB cable, plug one end into the USB port on the display, then plug the other end into an available USB port on your computer.
15. Plug the DC barrel connector on the included AC power adapter into the DC power connector on the monitor.
16. Remove the towel and position the monitor on the working surface as normal for use. Follow the instructions in step 12 above to adjust the display angle, as desired.

Note: The display should be at least 10° from vertical to ensure it is stable and will not fall over onto its face.

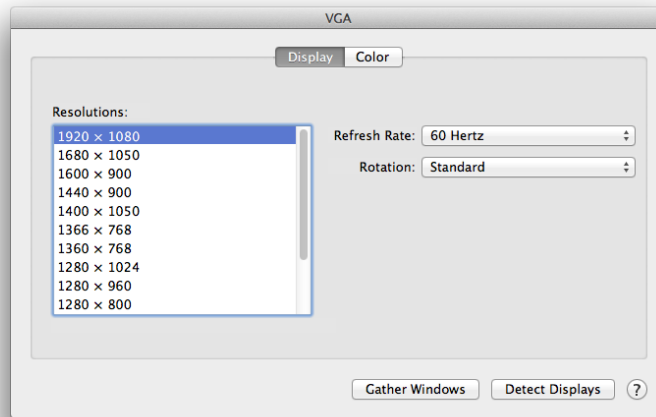
17. Using the included AC power cord, plug the C13 connector into the AC power adapter, then plug the other end into a nearby AC power outlet. Press the **Power** button to turn the monitor on.
18. Turn on your computer and log in.
19. Click the Apple icon, then select **System Preferences...** from the menu.



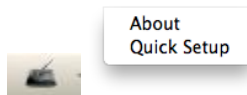
20. Click the **Displays** icon in the *Hardware* section.



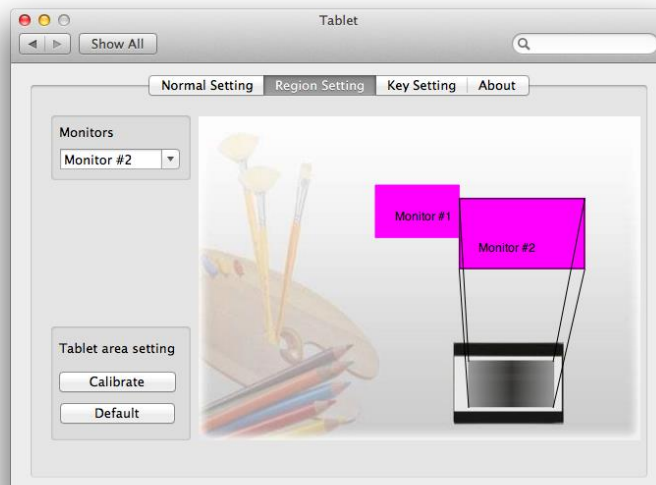
21. Set the display to **1920 x 1080** in the dialog on the pen display, then click the red X in the upper left corner of the main screen's dialog to close the two dialogs.



22. Locate and click the **Tablet** icon in the task bar, then click the **Quick Setup** option.



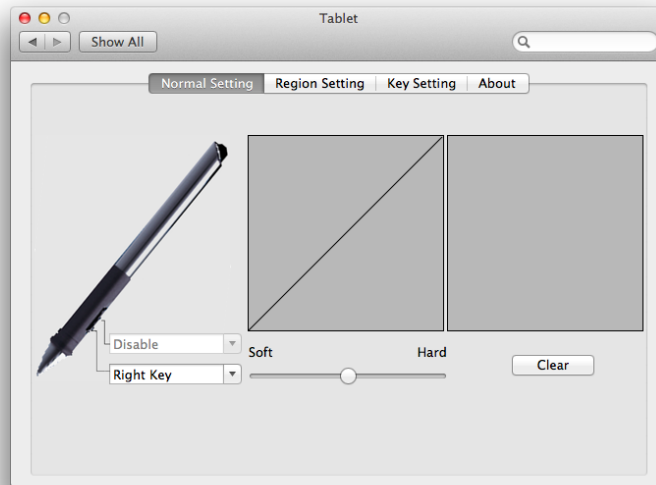
23. Click the **Region Setting** tab. Use the **Monitors** pull down list box to select the pen display.



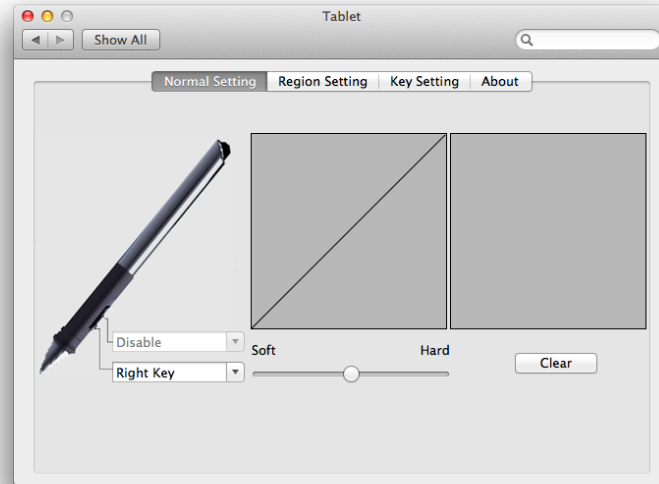
24. Click the **Calibrate** button. Carefully click in the center of each red cross that appears in each of four corners to set the calibration.



25. Click the **Normal Setting** tab to get the following screen. Use the pen in the area above the *Clear* button to test the pen's pressure sensitivity. Use the slider to adjust sensitivity up or down. The curve above the slider will change to reflect the pressure sensitivity.



26. Select the pull down list box (defaults to *Right Key*) to select the function you wish to perform with the side button. When you are finished, click the red X in the upper left corner to close the dialog.



Congratulations, you are ready to start using your new pen display with your favorite software!

OSD MENU SYSTEM

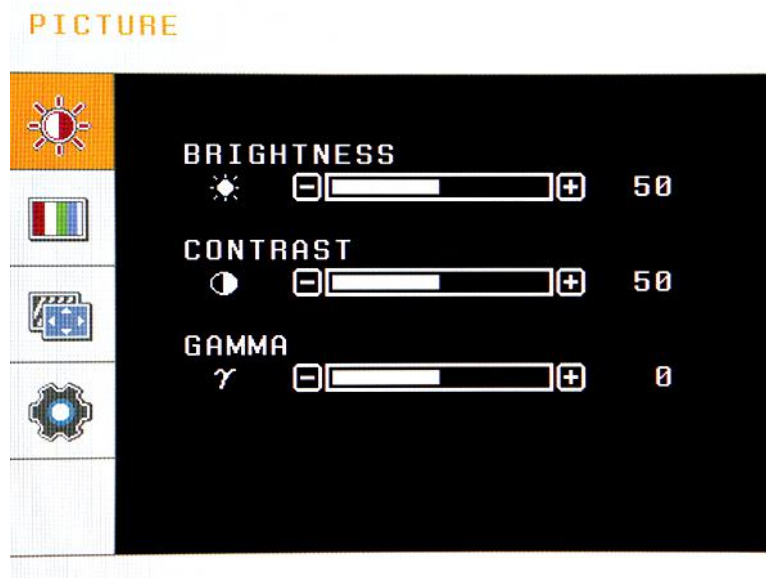
The OSD menu system consists of a Full OSD Menu, with multiple display adjustment options, and two Quick Access Menus for adjusting Brightness and Contrast without the need to activate the full OSD menu. The following paragraphs explain the functionalities of each control button.

- + Increase/Up:** If no Menu is displayed, pressing this button activates the Brightness Quick Access menu. If a Menu is displayed, pressing this button moves the highlight up or increases the displayed value.
- | Decrease/Down:** If no Menu is displayed, pressing this button activates the Contrast Quick Access menu. If a menu is displayed, pressing this button moves the highlight down or decreases the displayed value.
- M Menu/Enter:** If no Menu is displayed, pressing this button activates the Full OSD Menu system. If a Quick Access Menu is displayed, pressing this

button exits the control. If the Full OSD Menu system is displayed, pressing this button activates/selects the highlighted function.

- A Auto/Exit:** If no Menu is displayed, pressing this button initiates the built-in automatic adjustment function, which attempts to automatically adjust the positioning and timing. If a Quick Access Menu is displayed, pressing this button exits the menu. If the Full OSD Menu is displayed, pressing this button exits the currently activated function or exits the menu, if already at the top level.

Picture Menu

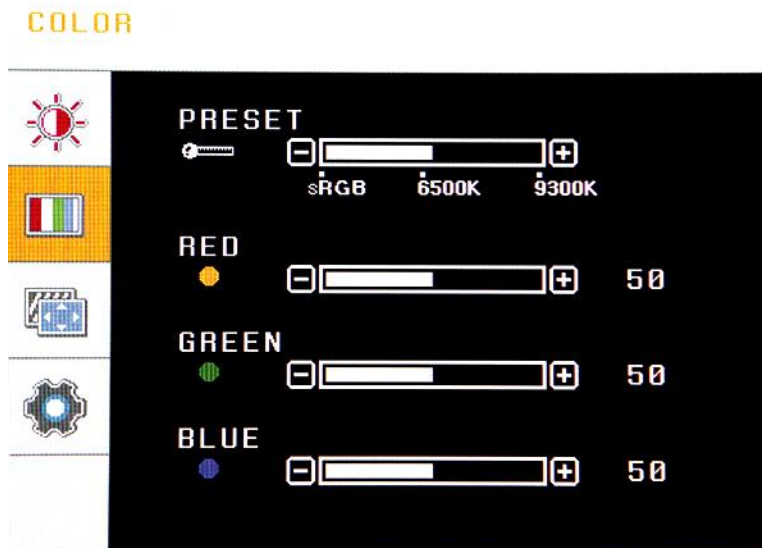


Brightness: Adjusts the screen Brightness level. The adjustment range is 0 to 100, in increments of 1, and the default value is 50. Note that you can quickly adjust the screen Brightness by pressing the **Increase/Up** button when no menu is displayed.

Contrast: Adjusts the screen Contrast level. The adjustment range is 0 to 100, in increments of 1, and the default value is 50. Note that you can quickly adjust the screen Contrast by pressing the **Decrease/Down** button when no menu is displayed.

Gamma: Adjusts the Gamma level. The adjustment range is -50 to +50, in increments of 50, and the default value is 0.

Color Menu



Preset: Sets the color using one of three presets. The possible options are sRGB, 6500K, and 9300K, and the default value is 6500K.

Red: Sets the intensity of the Red color component. The adjustment range is 0 to 100, in increments of 1, and the default value is 50.

Green: Sets the intensity of the Green color component. The adjustment range is 0 to 100, in increments of 1, and the default value is 50.

Blue: Sets the intensity of the Blue color component. The adjustment range is 0 to 100, in increments of 1, and the default value is 50.

Tracking Menu



Horizontal: Adjusts the Horizontal position of the image on the monitor. The adjustment range is 0 to 100, in increments of 1, and the default is 50. This option is only displayed when using the VGA input.

Vertical: Adjusts the Vertical position of the image on the monitor. The adjustment range is 0 to 100, in increments of 1, and the default is 50. This option is only displayed when using the VGA input.

Clock (not pictured): Adjusts the monitor's Clock frequency. On a gray test screen, an incorrect Clock setting will manifest itself as large vertical lines and the display may have an incorrect width. The Clock should be corrected before attempting to correct the Phase. The adjustment range is 0 to 100, in increments of 1, and the default is 50. This control can only be accessed when using the VGA input.

Phase (not pictured): Adjusts the monitor's Phase value. On a gray test screen, an incorrect Phase setting will manifest itself as a series of horizontal lines. The Clock frequency should be corrected before attempting to correct the Phase. The adjustment range is 0 to 100, in increments of 1, and the default is 50. This control can only be accessed when using the VGA input.

Sharpness (not pictured): Adjusts the intensity of the edge contrast (aka acutance) within the image. A lower setting will tend to blur colors across the transition, while a higher

setting will sharpen the distinction between colors. The adjustment range is 0 to 100, in increments of 1, and the default is 50.

Setup Menu



Language: Allows you to select the display language for the OSD menu. You can select English, German, French, Spanish, Italian, Russian, Korean, Japanese, and Chinese. The default is English.

OSD Horizontal: Adjusts the Horizontal position of the OSD menu on the screen. The adjustment range is from 1 to 100, in increments of 1, and the default is 50.

OSD Vertical: Adjusts the Vertical position of the OSD menu on the screen. The adjustment range is from 1 to 100, in increments of 1, and the default is 50.

OSD Timer: Adjust the amount of time, in seconds, that the OSD menu will remain displayed without any input on the controls. The adjustment range is 10 to 100, in increments of 10, and the default is 10.

White Balance (not pictured): Activating this entry causes the monitor to automatically adjust the White Balance. To activate the ability, change the value from OFF to ON. The entry returns to the OFF status when the automatic adjustment is complete.

DCR (not pictured): DCR stands for Dynamic Contrast Ratio, which is a circuit that increases the effective picture contrast by changing the light intensity of the LED backlighting. DCR tends to cause too much contrast fluctuation when dealing with swiftly moving images and is usually better suited to applications use than for use with games. DCR can be turned ON or OFF.

4:3 Or Wide (not pictured): This option determines whether the monitor uses a 4:3 or 16:9 (wide) aspect ratio. The default is Wide.

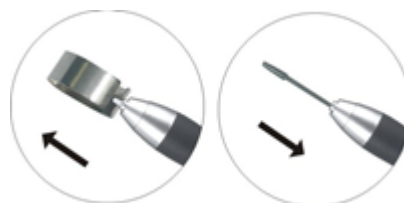
Input Select (not pictured): This entry allows you to select which of the three video inputs to use. You can set it to VGA, HDMI, or DVI. Note that this is only necessary when you have more than one video input in use. When only a single input is in use, the monitor will automatically use the active input.

Factory Reset (not pictured): Activate this entry to return all monitor settings to their default values. To activate this entry, change the value from NO to YES, then press the Menu/Enter button again instead of the Auto/Exit button, as you normally would when changing a value. Once the reset has finished, the entry will return to NO.

REPLACING THE PEN TIP

As you use the pen, the nib will get worn down. When it does, it should be replaced with one of the included replacement tips. Perform the following steps to replace the nib.

1. Position the pen tip removal tool over the pen tip, then squeeze to grasp the tip.
2. Pull the old tip out of the pen.
3. Insert the replacement tip, then press down on the screen surface or some other surface to seat it into place.



TROUBLESHOOTING

Q1: The Power LED is off and the monitor will not turn on.

A1: Verify that the power connections are fully seated. Check the AC power outlet to verify that it is live by using another device, such as a lamp.

Q2: The Power LED is glowing blue, but there is no video on the monitor.

A2: Verify that the computer is turned on. Verify that the computer is not asleep or that the screen saver is not active. Verify that the proper input is selected. Try swapping out the video cable with a known good cable. Adjust the video resolution to ensure it does not exceed the monitor's capabilities (1920x1080p).

Q3: One of the primary colors (Red, Green, or Blue) is missing.

A3: Check the color settings in the built-in OSD to ensure that the color intensity is set to a balanced value. Check the connectors to ensure that none of the pins are bent, broken, or missing. Try replacing the video cable with a known good one.

Q4: The image is not centered on the screen.

A4: Press the Auto Adjust button to see if it can automatically correct itself. Using the built-in OSD, adjust the horizontal and/or vertical position so that it is centered (VGA input only). Check the screen resolution settings to ensure it is within the monitor's capabilities.

Q5: The pen does not function.

A5: Verify that the USB cable is properly plugged into your computer. Try rebooting your computer. Verify that no other pen drivers are present on your computer. Uninstall, then reinstall the drivers. Try plugging the monitor's USB cable into a powered hub, with at least 2A of power.

Q6: The pen nib is worn out.

A6: Use the included pen tip removal tool to replace the nib with one of the included replacement nibs.

Q7: Cursor movement is erratic.

A7: Recalibrate the pen. Try rebooting your computer. Verify that there are no nearby electrical devices, which may create radio frequency or electromagnetic interference.

Q8: The side button does not function.

A8: Verify that the pen tip is within 5mm when pressing the side button. Check the button functions to verify it is set for the function you expect.

Q9: The cursor is not directly under the pen tip.

A9: Recalibrate the monitor.

Q10: The pen cursor responds on one monitor but does not work on the other monitor.

A10: Sometimes the driver wants to span both monitors by default, even though the non-pen display cannot interact with the pen, so ensure that the working area is limited to just the pen display.

SPECIFICATIONS

Model	14481
Display Type	21.5" IPS
Active Area	18.77" x 10.56" (476.64 x 268.11 mm)
Maximum Resolution	1920 x 1080p
Pixel Pitch	0.248 x 0.248 mm
Display Colors	16.7 million
Viewing Angles	178° horizontal and vertical
Video Inputs	Analog RGB/VGA (15-pin D-sub) HDMI® DVI-I
Input Power	12 VDC, 3A
AC Adapter Input Power	100 ~ 240 VAC, 50/60 Hz
Operating Power Consumption	30 watts
Standby Power Consumption	≤ 0.5 watts
Energy Efficiency	≥ 0.85 watts
Tablet Resolution	5080 lpi
Tracking Speed	200 pps
Pressure Sensitivity	2048 levels
Pen Accuracy	± 0.5mm (center) to ±3.0mm (edge/corner)
Pen Type	Wireless passive mode without battery
Operating System Compatibility	Windows® XP/Vista®/7/8 Mac® OS X® 10.2.8 or newer
Stand Angle Adjustment	20° ~ 90°

VESA Mounting Size	75 x 75 mm
Operating Temperature	+32 ~ +104°F (0 ~ +40°C)
Storage Temperature	-4 ~ +60°F (-20 ~ +60°C)
Operating Humidity	20 ~ 80% RH, noncondensing
Storage Humidity	10 ~ 90% RH, noncondensing
Dimensions	20.9" x 12.5" x 1.6" (531 x 318 x 40 mm)
Weight	10.6 lbs. (4.8kg)

DISPLAY MODES

Resolution	Horizontal Frequency (kHz)	Refresh Rate (Hz)
720 x 400	31.47	70
640 x 480	31.47	60
640 x 480	37.86	72.8
640 x 480	37.5	75
800 x 600	37.88	60.3
800 x 600	48.08	72.2
800 x 600	46.87	75
1024 x 768	48.36	60
1024 x 768	56.48	70.1
1024 x 768	60.02	75
1280 x 1024	63.98	60
1280 x 1024	79.98	75
1440 x 900	55.94	60
1440 x 900	70.64	75
1600 x 900	60.0	60
1680 x 1050	65.3	60
1920 x 1080	67.5	60

REGULATORY COMPLIANCE

Notice for FCC



This device complies with Part 15 of the FCC rules. Operation is subject to the following two conditions: (1) this device may not cause harmful interference, and (2) this device must accept any interference received, including interference that may cause undesired operation.

Modifying the equipment without authorization may result in the equipment no longer complying with FCC requirements for Class B digital devices. In that event, your right to use the equipment may be limited by FCC regulations, and you may be required to correct any interference to radio or television communications at your own expense.

This equipment has been tested and found to comply with the limits for a Class B digital device, pursuant to Part 15 of the FCC Rules. These limits are designed to provide reasonable protection against harmful interference in a residential installation. This equipment generates, uses and can radiate radio frequency energy and, if not installed and used in accordance with the instructions, may cause harmful interference to radio communications. However, there is no guarantee that interference will not occur in a particular installation. If this equipment does cause harmful interference to radio or television reception, which can be determined by turning the equipment off and on, the user is encouraged to try to correct the interference by one or more of the following measures:

- Reorient or relocate the receiving antenna.
- Increase the separation between the equipment and receiver.
- Connect the equipment into an outlet on a circuit different from that to which the receiver is connected.
- Consult the dealer or an experienced radio/TV technician for help.

Notice for Industry Canada

This Class B digital apparatus complies with Canadian ICES-003.

Cet appareil numérique de la classe B est conforme à la norme NMB-003 du Canada.

HDMI®, the HDMI Logo, and High-Definition Multimedia Interface are trademarks or registered trademarks of HDMI Licensing LLC in the United States and other countries.

Microsoft®, *Windows®*, and *Vista®* are registered trademarks of Microsoft Corporation in the United States and/or other countries.

Apple®, *Mac®*, and *OS X®* are trademarks of Apple Inc., registered in the U.S. and other countries.