

MONOPRICE

Select 8-inch 200-watt Subwoofer

PID 14567/30734/30735

User's Manual

TABLE OF CONTENTS

SAFETY WARNINGS AND GUIDELINES	3
INTRODUCTION.....	5
CUSTOMER SUPPORT	5
PACKAGE CONTENTS	6
SUBWOOFER OVERVIEW	6
SPEAKER BREAK-IN	7
SUBWOOFER PLACEMENT.....	8
SPEAKER CONNECTIONS.....	8
Preparation.....	8
Connecting to a Dedicated Subwoofer Output	9
Connecting to a Stereo Preamplifier Output	9
Connecting to a Stereo Speaker Output.....	10
SETUP	11
Subwoofer Settings.....	11
INPUT VOLTAGE AND FUSE REPLACEMENT	12
TROUBLESHOOTING	13
TECHNICAL SUPPORT	13
SPECIFICATIONS.....	14
REGULATORY COMPLIANCE.....	15
Notice for FCC	15
Notice for Industry Canada.....	16
EU Declaraton of Conformity.....	16
WEEE Information	17
Safety Notice.....	18

SAFETY WARNINGS AND GUIDELINES

For best results, and to avoid personal injury or damage to your valuable equipment, carefully read and follow these safety warnings.

- Do not expose this speaker to moisture of any kind. Do not place items containing liquids, such as vases or drinking glasses, on or near this speaker. If moisture does get in or on the device, immediately unplug it from the power outlet and allow it to fully dry before reapplying power.
- If operating this speaker in a humid environment, ensure that no condensation occurs. Condensation could cause damage to the speaker cone and could cause a short in the subwoofer's amplifier, which in turn could cause fire or severe electric shock.
- To avoid damage or discoloration of the speaker cabinet, do not place or install this speaker where they will be exposed to direct sunlight.
- Do not place or install this speaker near a heat source, such as a fireplace, stove, or space heater.
- Ensure that there is at least 8" (20cm) of free space in the back of the subwoofer to allow for heat dissipation from the amplifier.
- Do not pick up or carry the subwoofer by the ports on the front. Do not stick any objects inside the ports.
- When picking up the subwoofer take care not to touch the speaker cone on the front of the unit.
- Power off and unplug all Audio/Video components when making wired connections. Only apply power after all connections have been made.
- Double-check all connections prior to applying power to ensure that speaker polarity is properly made and that there are no stray wire strands, which could short the connections, either on the back of the speakers or the AV receiver/amplifier.
- This device uses a grounded power cord and requires a ground connection for safe operation. Ensure that the power source has a proper ground connection. Do not modify the plug or use a "cheater" plug to bypass the ground connection. If the

power cord will not fit in your AC outlet, please contact an electrician to have the obsolete plug replaced.

- Do not allow the power cord to be walked on or pinched. Do not run the power cord under a rug, as doing so could cause a fire.
- Ensure that your AC power outlet provides voltage within the range specified on the rear panel of the subwoofer.
- When removing cords or cables, do not pull on the cable. Always grasp the connector/plug head when removing cords or cables.
- If the fuse needs replacing, replace it with the same type, as specified in the *SPECIFICATIONS* and in the *INPUT POWER* sections.
- This unit ships set for nominal 110~120 VAC operation. If changing the input voltage level, you must also change the fuse to the type specified in the *SPECIFICATIONS* and in the *INPUT POWER* sections for the voltage level being used.
- Always remove power and unplug the subwoofer before attempting to replace the fuse.
- Do not bypass the purpose of the fuse by shorting the contacts or by any other means.
- Install the subwoofer in a place where the power plug can be readily accessible so that you can quickly unplug the unit in the event that a safety incident occurs.
- Do not use full volume until after the speaker has been fully broken-in.
- If you hear distortion reduce the volume until the distortion is no longer audible. Distortion can sound like a buzzing, scratching, or hammering sound. Distortion can damage or destroy delicate speaker coils.
- To avoid annoying feedback, ensure that any turntable is isolated from the vibrations produced by the speakers and subwoofer.
- Extreme bass frequencies and volume can distort the image on a nearby television. If this occurs, move the subwoofer further away from the TV.
- Do not use cleaning fluids, solvents, or other chemicals to clean the speaker cabinet. Do not use paper towels or other abrasive materials or cleaners. Use only a soft, dry

cloth. For best results, use a microfiber cleaning cloth. For particularly stubborn deposits, moisten the cloth with warm water.

- Do not use excessive volume when listening to this speaker. If you experience pain, discomfort, or dizziness, reduce volume immediately. Prolonged exposure to excessive volume can cause permanent hearing damage.
- Do not disassemble or attempt to service this subwoofer.

INTRODUCTION

Congratulations on your purchase of this Home Theater Subwoofer from Monoprice! When setup and used properly, this speaker will give you years of superior sound reproduction.

For best results, please read this entire manual prior to installation and use. To avoid personal injury or damage to your valuable equipment you should pay extra attention to the safety warnings and guidelines. Keep this manual in a safe place for future reference.

CUSTOMER SUPPORT

The Monoprice Customer Service department is dedicated to ensuring that your ordering, purchasing, and delivery experience is second to none. If you have any problem with your order, please give us an opportunity to make it right. You can contact a Monoprice Customer Service representative through the Live Chat link on our website www.monoprice.com during normal business hours (Mon-Fri: 5am-7pm PT, Sat-Sun: 9am-6pm PT) or via email at support@monoprice.com

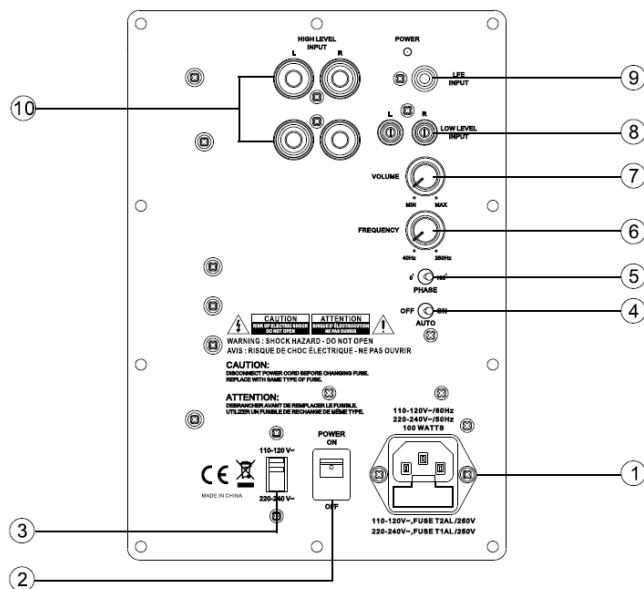
PACKAGE CONTENTS

After receiving the product, please inventory the contents to ensure you have all the proper parts, as listed below. If anything is missing or damaged, please contact Monoprice Customer Service for a replacement.

- 1x Subwoofer
- 1x AC power cord (IEC 60320 C13 to NEMA 5-15)
- 1x User's manual

SUBWOOFER OVERVIEW

- AC IN/FUSE:** Plug the included AC power cord into this socket. The fuse holder has the main fuse and a spare inside. Check the *SPECIFICATIONS* table for the proper fuse ratings.
- POWER:** Depress the side with the white dot to turn power ON.
- VOLTAGE:** Use this switch to set the mains voltage for 110~120 or 220~240 VAC operation. The switch is protected by a plastic cover to prevent accidental changes.
- AUTO:** Turns the Auto Power feature on/off. When enabled, the subwoofer will automatically go into standby mode after about 22 minutes with no audio signal detected. If in standby, it will automatically power on when an audio signal is detected.



5. **PHASE:** Sets the subwoofer to be in-phase or 180° out-of-phase with the signal being sent to the satellite and center channel speakers. See the *SETUP* section below for details on how to use this control.
6. **FREQUENCY:** Use this knob to set the variable crossover frequency from 40 ~ 250 Hz. See the *SETUP* section below for details on how to use this control.
7. **VOLUME:** Use this knob to set the overall volume level of the subwoofer in relation to the satellite and center channel speakers. See the *SETUP* section below for details on how to use this control.
8. **LOW LEVEL INPUT:** Stereo line level RCA inputs for connecting to the normal line level, stereo preamplifier outputs on an amplifier.
9. **LFE INPUT:** Mono line level RCA input for connecting to a dedicated subwoofer output on an amplifier. This is the preferred method of connecting the subwoofer.
10. **HIGH LEVEL INPUT:** Stereo speaker level 5-way binding posts for connecting to the speaker level outputs on an amplifier. This is the least favored method of connecting the subwoofer.

SPEAKER BREAK-IN

In the same way that a new car requires a break-in period before it can be safely operated at high engine RPMs, speakers require a break-in period before they can be safely operated at maximum volume levels. Proper break-in ensures that the moving parts of the speaker (the cone and cone suspension) are allowed to flex and soften, losing the initial stiffness and allowing the speaker to move through its full intended range. After the break-in period, the subwoofer will produce richer and fatter sounding lows without any hint of distortion.

The best way to break-in speakers is simply to play normal music or watch movies at moderate volume levels. The amount of time required for speaker break-in varies based on the operating environment, but is typically in the area of 50~80 hours. It will take a bit longer in a cold or dry environment and a little less time in a warm or humid environment.

Note that the break-in period does not have to be continuous.

SUBWOOFER PLACEMENT

- Do not place the subwoofer in a corner as it will result in a "boomy", unnatural sounding bass.
- Do not place the subwoofer directly against a wall or cabinet. There should be some room around the subwoofer for the sound to develop and reflect itself around the room.
- Although bass is omnidirectional, a location in the front center is generally ideal.

Tip: One good way to determine the best initial location for the subwoofer is to first place it at your ideal listening location. While playing music with solid bass content, walk around the room until the bass sounds best, then move the subwoofer to that location and fine tune from there.

SPEAKER CONNECTIONS

Warning! To prevent possible personal injury and/or damage to your equipment, turn off and unplug all equipment before making connections!

Preparation

Before attempting to make any connections it is best to look at the situation, get all the necessary materials together, and then make all the connections at once.

First, look at the back of your amplifier or receiver to determine what options it offers for making connections. Amplifiers and receivers typically employ either 5-way binding posts, spring-loaded terminals, or push terminals for the speaker connections. For subwoofers, many amplifiers and receivers offer one or two line level RCA connectors.

A 5-way binding post can accept bare speaker wire, spade plugs, pin plugs, and banana plugs, while spring loaded and push terminals can accept either bare speaker wire or pin plugs. Refer to the documentation that came with your amplifier or receiver to determine the maximum size/gauge speaker wire the speaker terminals can accept.

The subwoofer offers three types of connections. The ideal connection is made using a single coaxial RCA cable from the amplifier's dedicated subwoofer output to the LFE input on the subwoofer. The next best connection type is from an amplifier's stereo preamplifier outputs to the two line level RCA jacks. The last connection choice is from the amplifier's stereo speaker level outputs to the stereo High Level Input on the subwoofer. The 5-way binding posts can accept bare speaker wire (up to 10 AWG), spade plugs, banana plugs, or pin plugs.

There are several different ways to connect the subwoofer. The method you choose is primarily determined by the presence of a dedicated subwoofer output on your amplifier/receiver. The connection methods are presented in order of preference.

Connecting to a Dedicated Subwoofer Output

A dedicated subwoofer output is usually one or two RCA jacks marked "Subwoofer", "Sub Pre Out", or something similar on the back of the amplifier/receiver. Refer to the manufacturer's documentation for reference. Subwoofer outputs are monophonic, so if you have two subwoofer outputs they are intended to drive two separate subwoofers.

To make this connection you will need a cable with a single RCA plug on each end.

1. Insert the RCA plug at the one end of the cable into the **LFE Input** jack on the back of the subwoofer.
2. Insert the RCA plug at the other end of the cable into the subwoofer output jack on the back of the amplifier/receiver.

Connecting to a Stereo Preamplifier Output

If your amplifier/receiver lacks a dedicated line level subwoofer output, the next best option for connecting the subwoofer is to use line level preamplifier outputs. These outputs should not be confused with line level outputs intended to connect components, such as tape decks or DVD recorders, to the amp. Preamplifier outputs will usually be marked as "Pre-amp Out" or something similar. Refer to your amp's owner's manual to determine which, if any, outputs are the pre-amp outputs.

To make this connection you will need a stereo RCA patch cable of the appropriate length.

1. Insert the black/negative side of one end of the cable into the black/negative **Low Level Input** RCA jack on the back of the subwoofer.
2. Insert the red/positive side of one end of the cable into the red/positive **Low Level Input** RCA jack on the back of the subwoofer.
3. Insert the black/negative side of the other end of the cable into the black/negative pre-amplifier RCA jack on the back of the amplifier/receiver.
4. Insert the red/positive side of the other end of the cable into the red/positive pre-amplifier RCA jack on the back of the amplifier/receiver.

Connecting to a Stereo Speaker Output

If your amplifier/receiver lacks both a dedicated subwoofer output and pre-amp outputs, you can still make a connection using speaker level inputs on the subwoofer. To make this connection will need two equal lengths of two-conductor speaker wire.

1. Connect the black/negative side of one speaker wire to the left channel black/negative **High Level Input** 5-way binding post on the back of the subwoofer.
2. Connect the red/positive side of the wire to the left channel red/positive **High Level Input** 5-way binding post on the back of the subwoofer.
3. Connect the black/negative side of the other end of the speaker wire to the black/negative left channel output for the Front/Main speakers on the back of the amp. This can be connected in parallel to the actual front main speakers.
4. Connect the red/positive side of that end of the wire to the red/positive left channel output for the Front/Main speakers on the back of the amp.
5. Repeat steps 1-4 for the right channel connection.
6. Visually inspect the connections at each end to verify correct polarity and the absence of any stray wire strands.

Note that the 5-way binding posts have protective plugs inserted into the end. If you are using banana plugs, remove these plugs and put them in a safe place for future use. Otherwise, you can leave them in place.

SETUP

Once all connections have been made and inspected, plug in and power on all equipment, including the subwoofer.

Subwoofer Settings

Auto Power: The amplifier features a power saving mode, which will automatically put the amplifier into standby mode after about 22 minutes of inactivity, then will automatically power on when an audio signal is detected. Use the POWER and AUTO switches to determine the mode of operation, as outlined below:

Mode	POWER Switch	AUTO Switch	LED
ALWAYS OFF	OFF	N/A	Off
STANDBY	ON	ON	Red
AUTO ON	ON	ON	Green
ALWAYS ON	ON	OFF	Green

Note: If you will be away, or if the subwoofer will go unused for a lengthy period, set the power switch to the OFF position.

Frequency: The Frequency knob allows you to adjust the frequency of the low pass filter, which acts as a crossover network between the subwoofer and satellite/center channel speakers. This setting determines how well the bass from the subwoofer blends with the mids and highs from the satellite and center channel speakers.

Refer to the owner's manual for your satellite/center channel speakers to find the low end of the frequency response. A good starting point therefore is to set the Frequency knob to a position that represents that level, then adjust it slightly up or down according to how it sounds.

Volume: The overall volume of the subwoofer will increase or decrease with the volume of the other speakers. The volume control on the subwoofer is therefore used to match the audio output level of the satellite and center channel speakers so that they blend into one smooth, continuous sound. In general, unless your musical material is particularly bass heavy or light, once you have set the volume on the subwoofer you shouldn't need to adjust it again.

Phase: Depending on the location of your subwoofer, the sound that reaches your ideal listening location could be out of phase with the sound from the rest of the system. If the bass sounds out of timing, muddy, or attenuated, try flipping the phase switch to the other position. The default, which will provide the best bass sound most of the time, is with the phase set to 0°.

As the subwoofer breaks in you may find you need to make minor adjustments to the frequency and volume settings to ensure the proper blend with the speakers.

INPUT VOLTAGE AND FUSE REPLACEMENT

By default the subwoofer ships with the **Voltage** switch set to the **110~120 V~** position and an **F2AL125V** fuse installed. Perform the following steps if you intend to operate this subwoofer in a 220V environment.

1. Flip the Power switch to the **OFF** position.
2. Unplug the AC power cord from the power source, then unplug it from the C14 panel connector on the rear of the subwoofer.
3. Insert the end of a flat head screwdriver into the groove at the top of the fuse holder, inside the C14 panel connector. Pull back or twist the screwdriver to unseat and remove the fuse holder.
4. Remove the main and spare fuses from the fuse clip and store them in a safe place, such as taped to this manual.

5. Insert an **F1AL250V** fuse (not included) into the fuse clip. Optionally, insert another **F1AL250V** fuse into the spare fuse tunnel.
6. Reinsert the fuse holder and push it in completely to seat it in place.
7. Using a Phillips screwdriver, remove the two screws holding the plastic cover over the Voltage switch, then remove the cover.
8. Using a flat head screwdriver, slide the **Voltage** switch to the **220~240 V~** position.
9. Replace the plastic cover over the Voltage switch and secure it to the rear panel using the two screws removed in step 7 above.

You will need to supply a power cord appropriate for the standard employed in your locale. Monoprice stocks and sells AC power cords with a C13 connector for use in various international markets, including the UK, EU, and Australia.

TROUBLESHOOTING

Q: There is no sound from the subwoofer.

A: Ensure that the subwoofer is plugged into an AC outlet and that it is turned on. Double check the speaker wire or line level connection to the subwoofer. Try turning up the subwoofer's volume control. Try flipping the phase switch to the other position.

TECHNICAL SUPPORT

Monoprice is pleased to provide free, live, online technical support to assist you with any questions you may have about installation, setup, troubleshooting, or product recommendations. If you ever need assistance with your new product, please come online to talk to one of our friendly and knowledgeable Tech Support Associates. Technical support is available through the online chat button on our website (www.monoprice.com) during regular business hours, 7 days a week. You can also get assistance through email by sending a message to tech@monoprice.com

SPECIFICATIONS

Woofer Type	8" paper cone with rubber surround
Amplifier Power (RMS)	100 watts into 4 ohms @ 1% THD+N
Amplifier Power (Peak)	200 watts into 4 ohms @ 1% THD+N
Nominal Impedance	4 ohms
Frequency Response	40 Hz ~ 1.3 kHz
THD+N (@ 100 watts/4 ohms/100Hz)	0.5%
Signal to Noise Ratio	> 96dB
Line Input Sensitivity	205mV
Adjustable Low Pass Crossover	46 ~ 250 Hz
Low Pass Filter	270 Hz @ 30 dB/oct
High Pass Filter	28 Hz @ 22 dB/oct
Bass Boost	12dB @ 45 Hz
Auto On Sensitivity	3mV
Auto Off Time	22 minutes
Power Consumption (Standby)	0.2 watts
Power Consumption (No Input Signal)	12 watts
Power Consumption (Maximum)	158 watts
Dimensions	15.0" x 10.6" x 12.8" (380 x 270 x 325 mm)
Weight	18.5 lbs. (8.4 kg)

REGULATORY COMPLIANCE

Notice for FCC



This device complies with Part 15 of the FCC rules. Operation is subject to the following two conditions: (1) this device may not cause harmful interference, and (2) this device must accept any interference received, including interference that may cause undesired operation.

Modifying the equipment without Monoprice's authorization may result in the equipment no longer complying with FCC requirements for Class B digital devices. In that event, your right to use the equipment may be limited by FCC regulations, and you may be required to correct any interference to radio or television communications at your own expense.

This equipment has been tested and found to comply with the limits for a Class B digital device, pursuant to Part 15 of the FCC Rules. These limits are designed to provide reasonable protection against harmful interference in a residential installation. This equipment generates, uses and can radiate radio frequency energy and, if not installed and used in accordance with the instructions, may cause harmful interference to radio communications. However, there is no guarantee that interference will not occur in a particular installation. If this equipment does cause harmful interference to radio or television reception, which can be determined by turning the equipment off and on, the user is encouraged to try to correct the interference by one or more of the following measures:

- Reorient or relocate the receiving antenna.
- Increase the separation between the equipment and receiver.
- Connect the equipment into an outlet on a circuit different from that to which the receiver is connected.
- Consult the dealer or an experienced radio/TV technician for help.

Notice for Industry Canada

This Class B digital apparatus complies with Canadian ICES-003.



EU Declaration of Conformity

Monoprice, Inc. declares the product described within this user guide or manual is in compliance with below applicable directives. The full text of the EU Declaration of Conformity is available at the following internet address:

https://www.monoprice.com/product?c_id=109&cp_id=10906&cs_id=1090602&p_id=14567&seq=1&format=2

or the CE DoC , which can be found within this user manual.

- EMC Directive 2004/108/EC
- Low Voltage Directive 2014/35/EU
- RoHS2 Directive 2011/65/EU
- WEEE Directive 2012/19/EC
- Packaging & Packaging Waste Directive 94/62/EC
- REACH Directive 1907/2006/EC



To prevent possible hearing damage, do not listen at high volume levels for long period

WEEE Information

User information for consumer products covered by EU Directive 2012/19/EU on Waste Electric and Electronic Equipment (WEEE).

This document contains important information for users with regards to the proper disposal and recycling of Monoprice products. Consumers are required to comply with this notice for all electronic products bearing the following symbol:



For Consumers in the European Union: This EU Directive requires that the product bearing this symbol and or its packaging must not be disposed of with unsorted municipal waste. The symbol indicates that this product should be disposed of separately from regular household waste streams. It is your responsibility to dispose of this and other electrical and electronics products via designated collection facilities appointed by the government or local authorities. Correct disposal and recycling will help prevent potential negative consequences to the environment and human health. For more detailed information about the disposal of your unwanted product, please contact your local authorities, waste disposal service, or the shop where you purchased the product.

Safety Notice



WARNING: Do not use this product near water, for example, in a wet basement or near swimming pool or in an area where accidental contact with water or liquid might occurs.

WARNING: Avoid using this product during an electrical storm. There may be a remote risk of electric shock from the surge caused by lightning.

WARNING: The external power adapter or AC power cord is the equipment's disconnection device. The power outlet must be located nearby the equipment and its access must be easy.