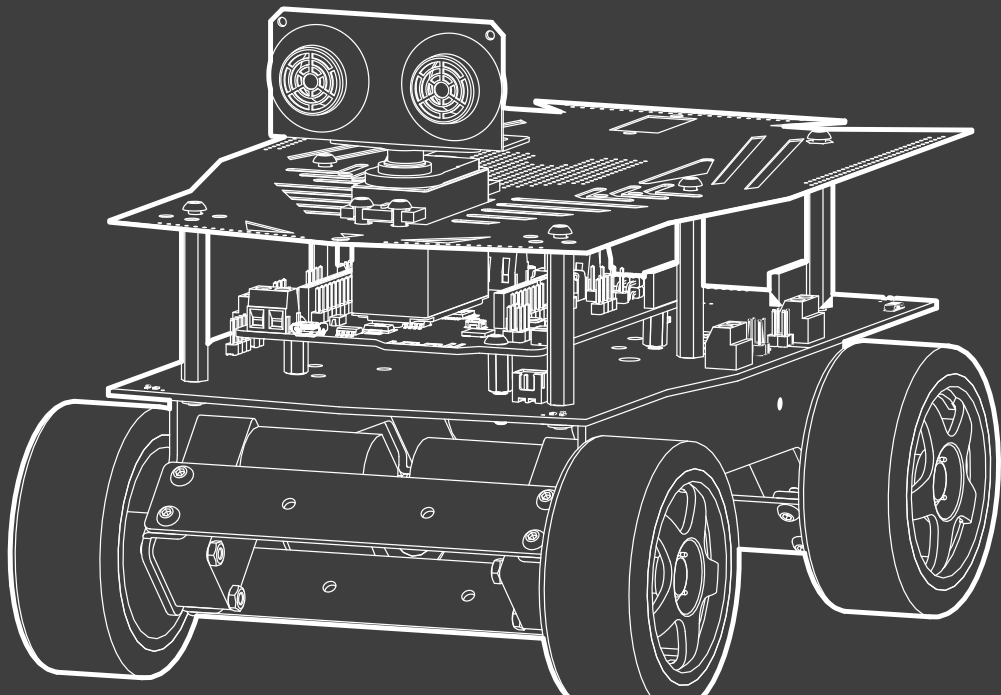


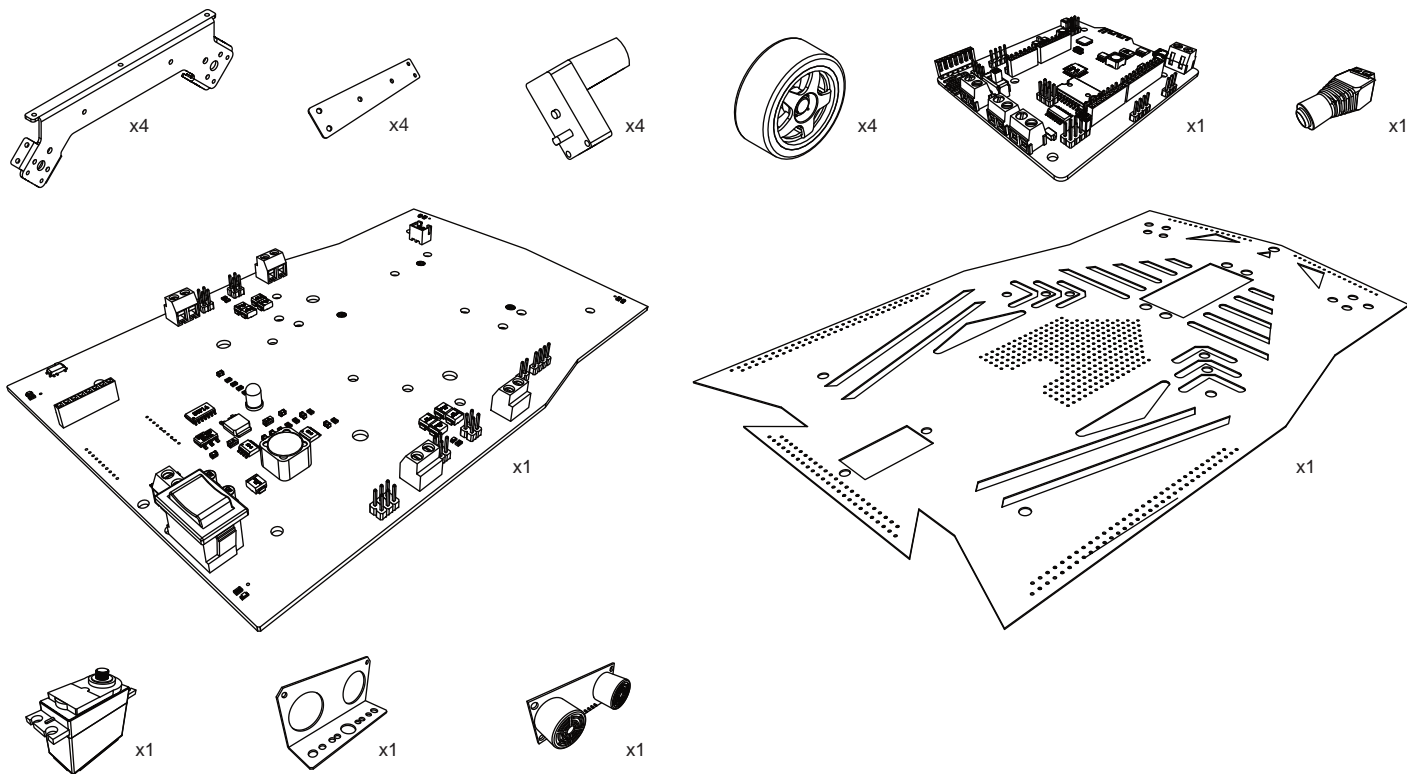
切诺基初级套件

Cherokey 4WD Basic Kit

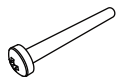
安装手册

Instruction Manual





M2.5*25mm
十字圆头螺钉
Phillips Pan Head Machine Screw



A1 x8

M2.5
平垫圈
Flat Washer



A2 x8

M2.5
弹簧垫圈
Split Lock Washer



A3 x8

M2.5
六角螺母
Hex Nut



A4 x8

M3*6mm
十字平头螺钉
Phillips Pan Head Machine Screw



B1 x29

M3
螺母
Nut



B2 x9

M3*10mm
尼龙柱
Nylon PCB Standoff



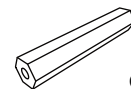
C1 x3

M3*20mm
尼龙柱
Nylon PCB Standoff



C2 x6

M3*30mm
尼龙柱
Nylon PCB Standoff



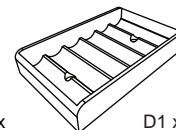
C3 x6

M3*8mm
十字平头螺钉
Phillips Flat Head Machine Screw



C4 x2

电池盒
Battery Box



D1 x1

电源线
Power Cable



D2 x1

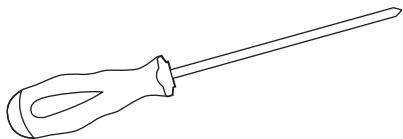
电机线
Motor Cable



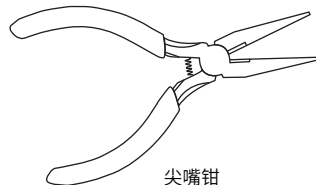
D3 x1



主要工具
Essential Tools

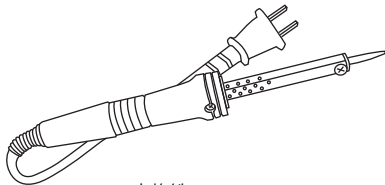


十字螺丝刀
Phillips Screwdriver

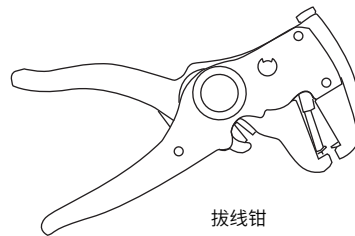


尖嘴钳
Long-Nosed Pliers

可选工具
Optional Too

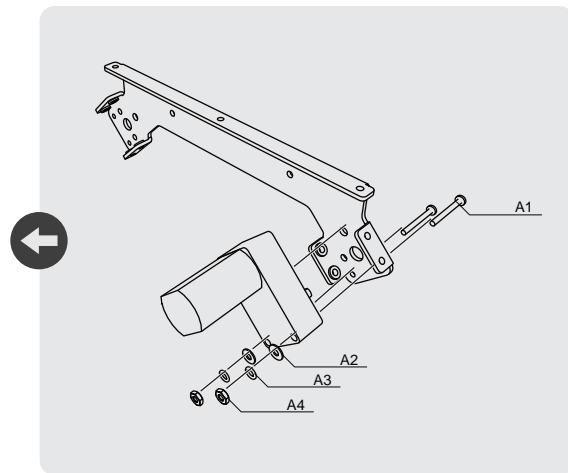
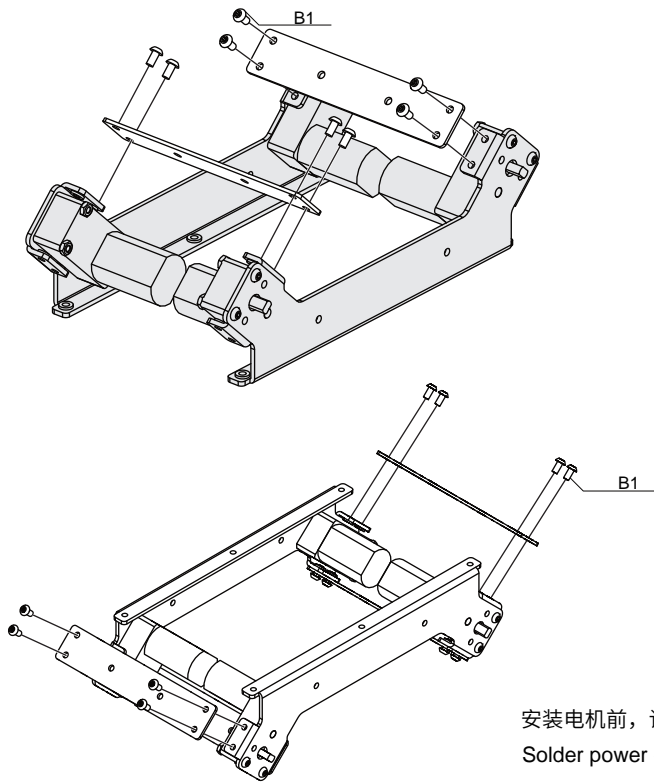


电烙铁
Soldering Iron



拔线钳
Wire Strippers

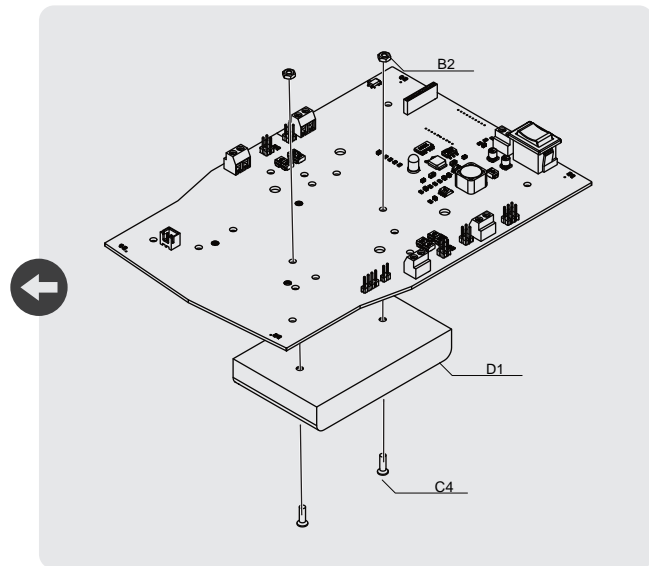
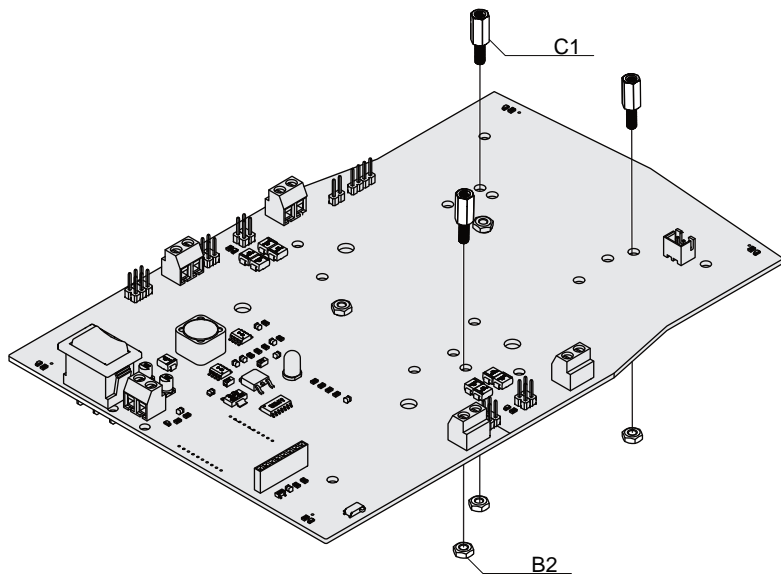
(备注：本套件不包含工具和电池。)
(Note: Tools and Batteries not included.)

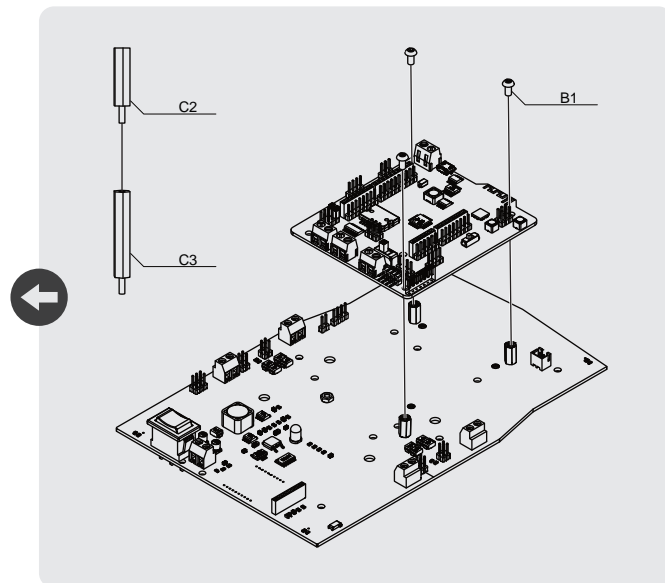
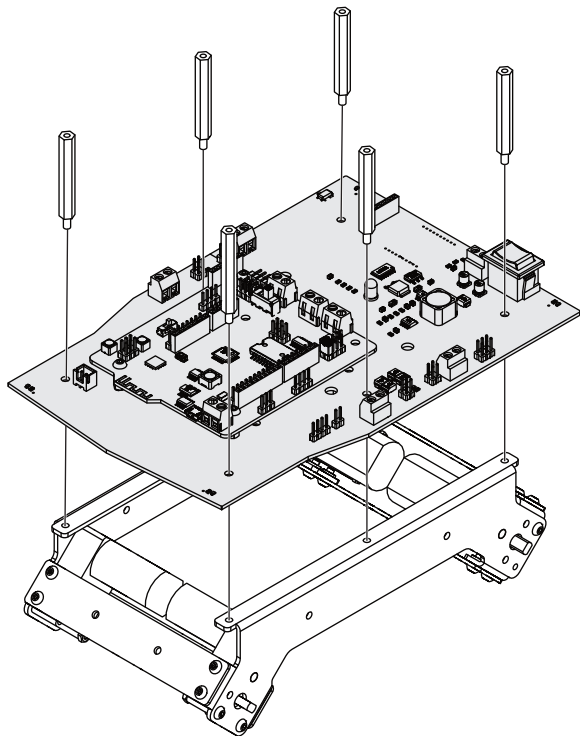


安装电机前，请先焊接电机线。

Solder power cables before installing the motors.

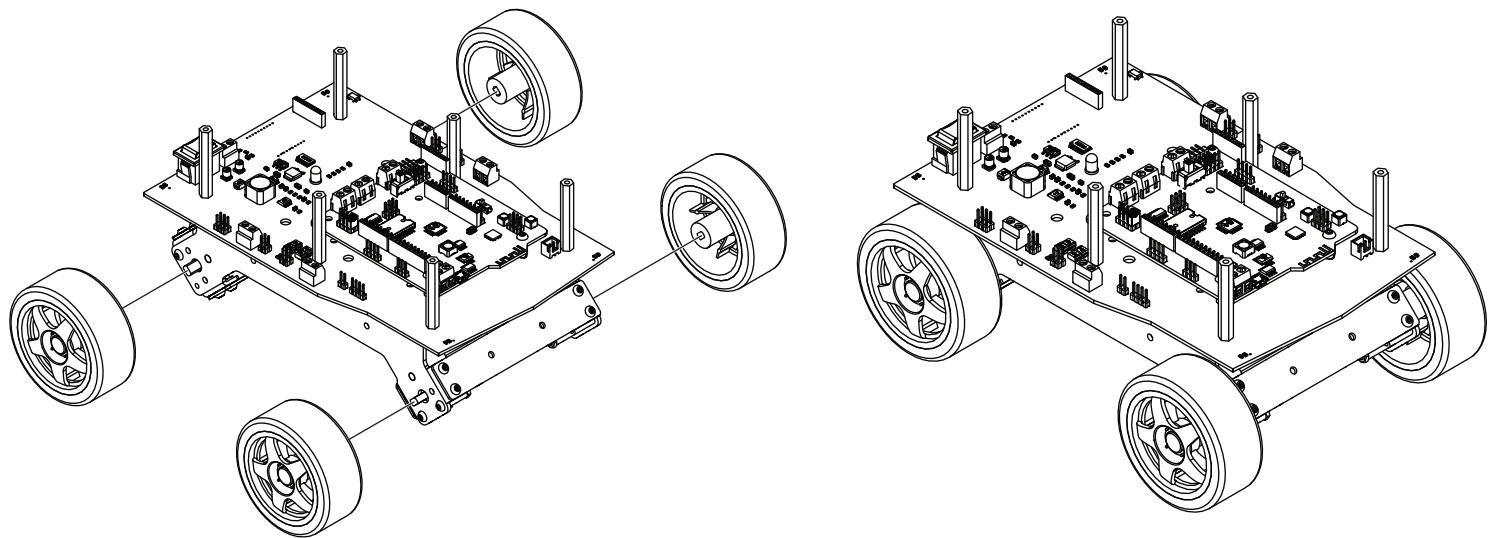
安装电池盒 Battery Box Installation



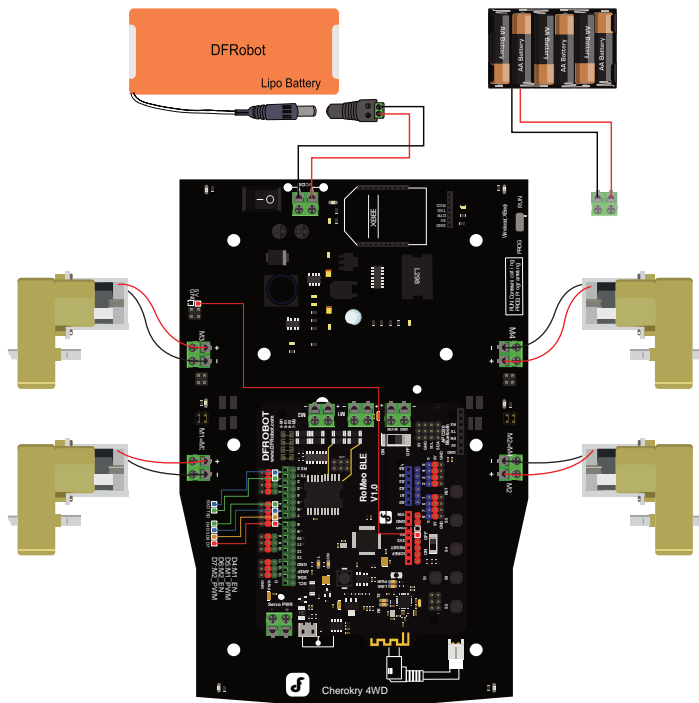


为了便于后续安装，请将电机线穿过扩展板通孔。
Lead motor power cables through holes to keep it neat and tidy.

安装轮胎 Wheel Installation



电路连接图
Connection



电源连接说明书将提供两种方案：

There are two options to power your device:

(1) 电池盒供电方案A

(1) Option A: Battery holder power supply.

(2) 7.4V 充电电池供电方案B


(2) Option B: Rechargeable battery power supply

7.4V 充电电池可在DFRobot商城选购，用户可按需求自行选择。

7.4V LiPo batteries are available at the DFRobot online store.

如想了解更多相关信息，可进入DFRobot Wiki查看更多教程。


<http://wiki.dfrobot.com.cn/>

ROB0117 



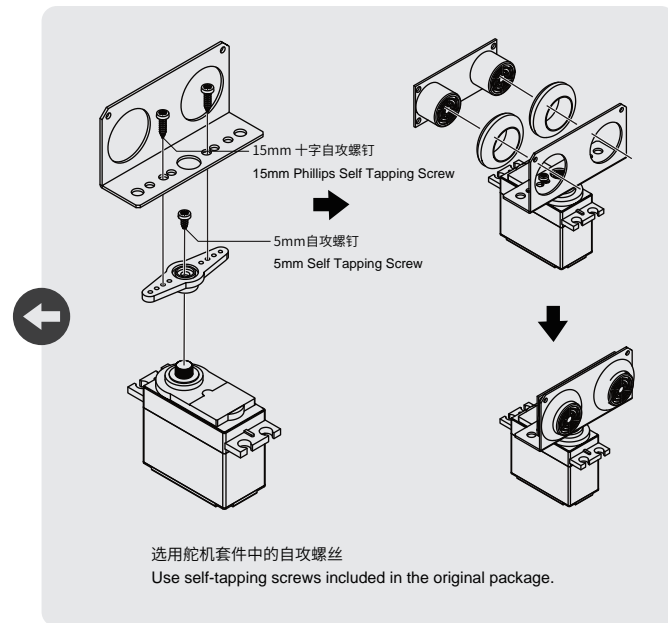
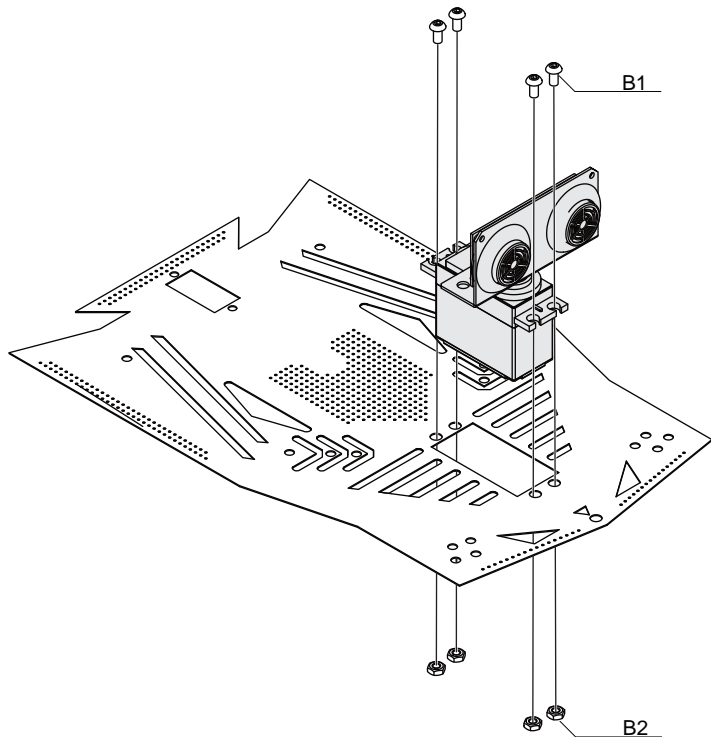
Refer to tutorials on DFRobot Wiki page for trouble shooting

<https://www.dfrobot.com/wiki>

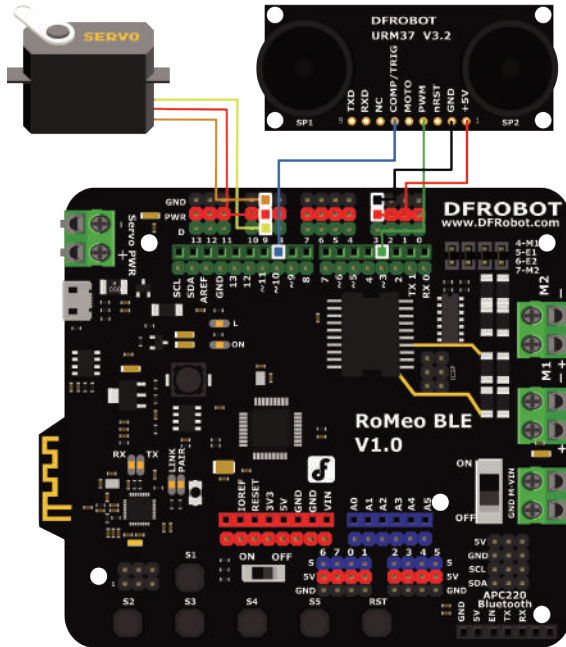
ROB0117 



安装舵机和超声波传感器 Servo & Sensor Installation



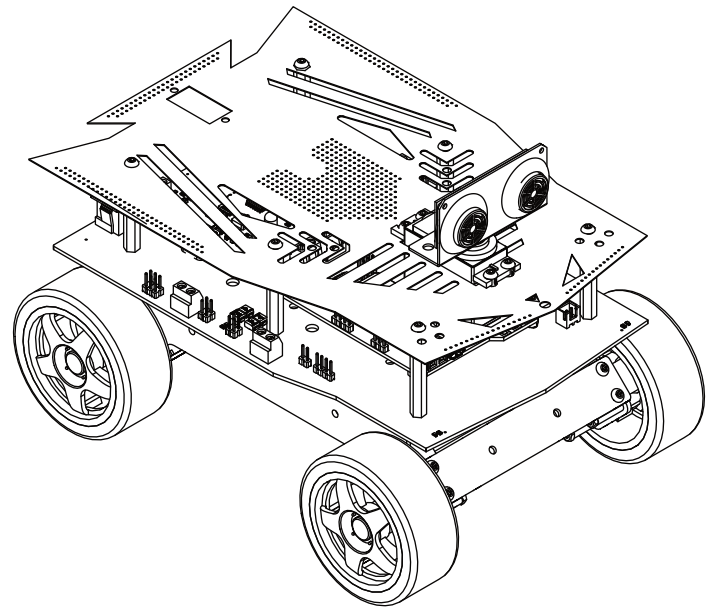
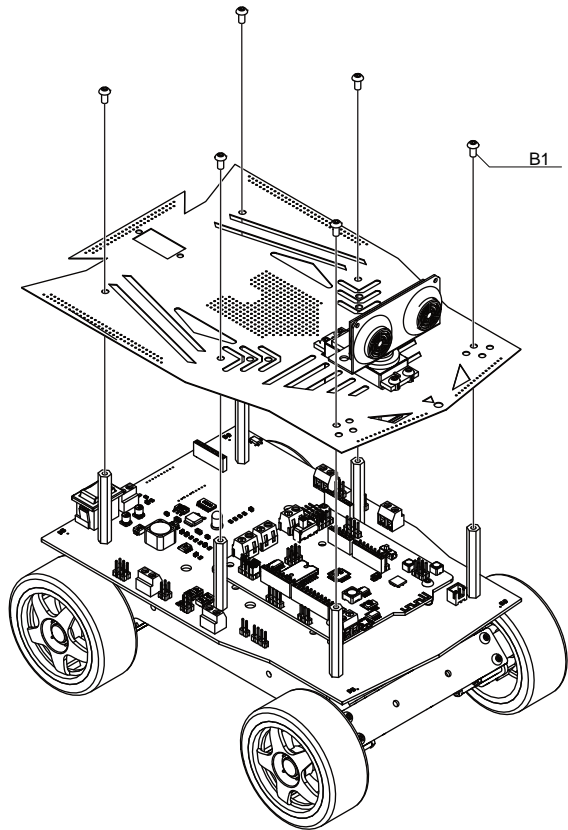
电路连接图
Servo/Sensor Connections



在搭建好舵机与超声波传感器的电路后，请先对两者进行调校。
详情见产品Wiki（可扫描二维码）：[Step4 调试超声波和舵机](#)

Calibrate the servo and supersonic sensor first when they are c
into the circuit,
Read content "Step4: Servo and Supersonic Sensor Calibration"
on its Wiki page (QR code available) for more details.

安装上层板 Top Panel Installation



网站: www.dfrobot.com.cn

Website: www.dfrobot.com

电话 (Tel): 86-21-61620183

服务支持 (Service): Techsupport@dfrobot.com

地址: 中国上海市浦东新区亮秀路112号Y1座615室

Address: Rm. 615, Bldg Y1, NO.112, Liangxiu Rd., Pudong, China

© 本说明书最终解释权归DFRobot所有

DFRobot has the final authority of interpretation on this manual.