

Sit-Stand Height Adjustable Desk Frame

Manual Crank

P/N 15721

User's Manual



WARNING: FAILURE TO COMPLY WITH OR OBSERVE ALL ASSEMBLY, SAFETY AND OPERATION INSTRUCTIONS AND WARNINGS REGARDING THE USE OF THIS PRODUCT MAY RESULT IN SERIOUS BODILY INJURY.

Important information

Read the entire instruction manual before you start installation and assembly.

This product is not intended for use by young children without supervision.

This product contains small items that could be a choking hazard if swallowed. Keep these items away from children.

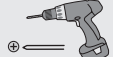
This product is intended for indoor use only. Using this product outdoors could lead to product failure and personal injury.

IMPORTANT: Ensure that you have received all parts according to the component checklist prior to installation. If any parts are missing or faulty, telephone your local distributor for a replacement.

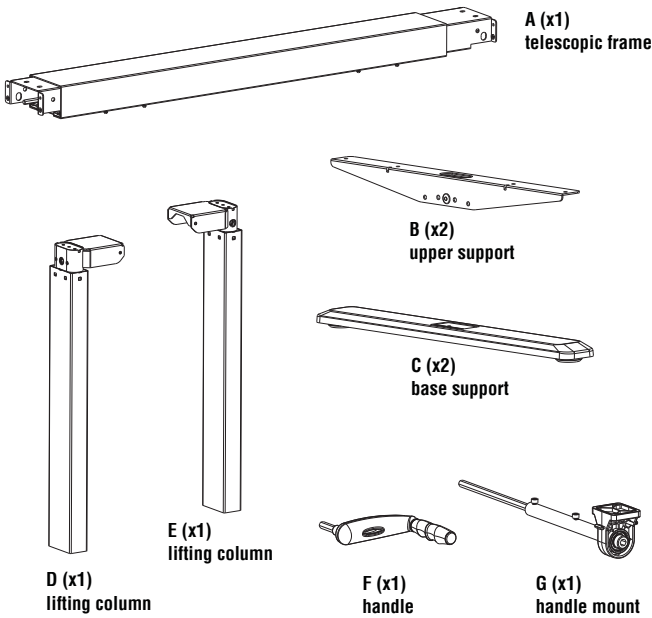
QUICK TIP: DO NOT over tighten screws during installation.



Tools
Needed



Component Checklist



S-A (x24)



S-B (x4)



S-C (x8)

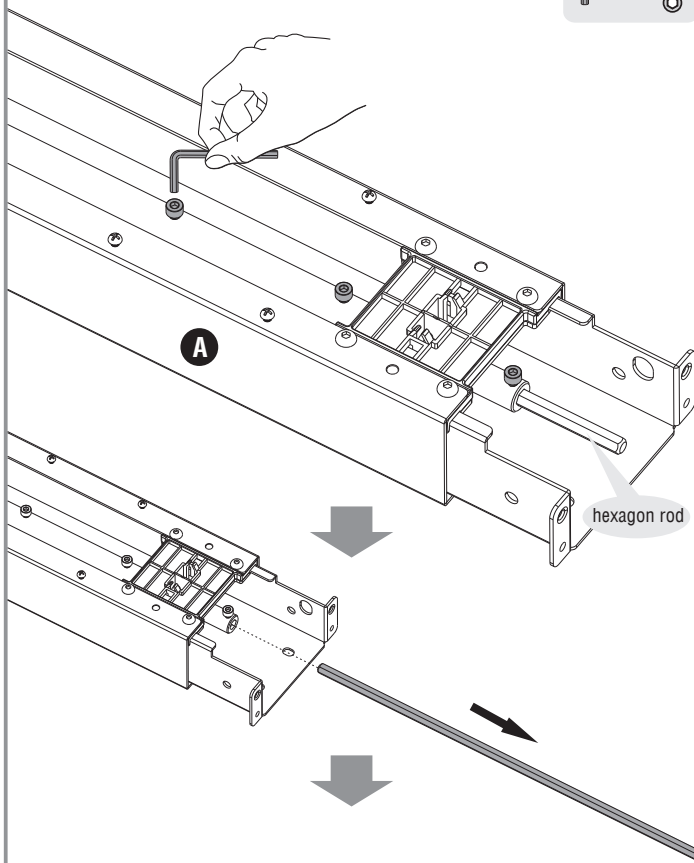
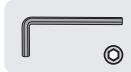


S-D (x1)
Allen Key

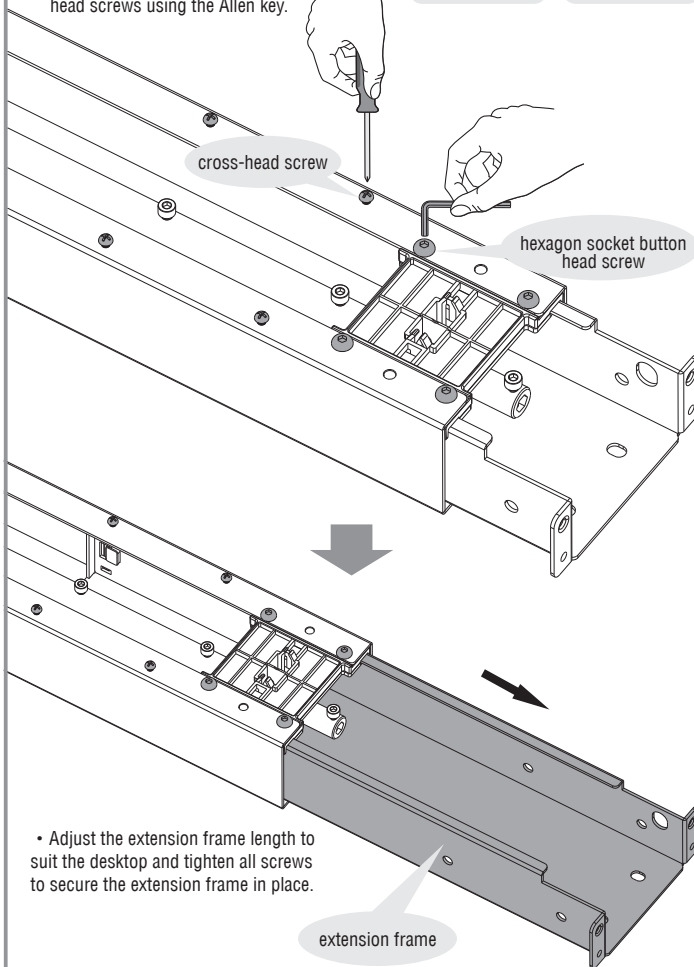
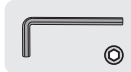
1

Adjusting the Frame

- Loosen the screws using the Allen key.
- Remove the hexagon rod.



- Loosen the cross-head screws using an appropriate screwdriver.
- Loosen the hexagon socket button head screws using the Allen key.



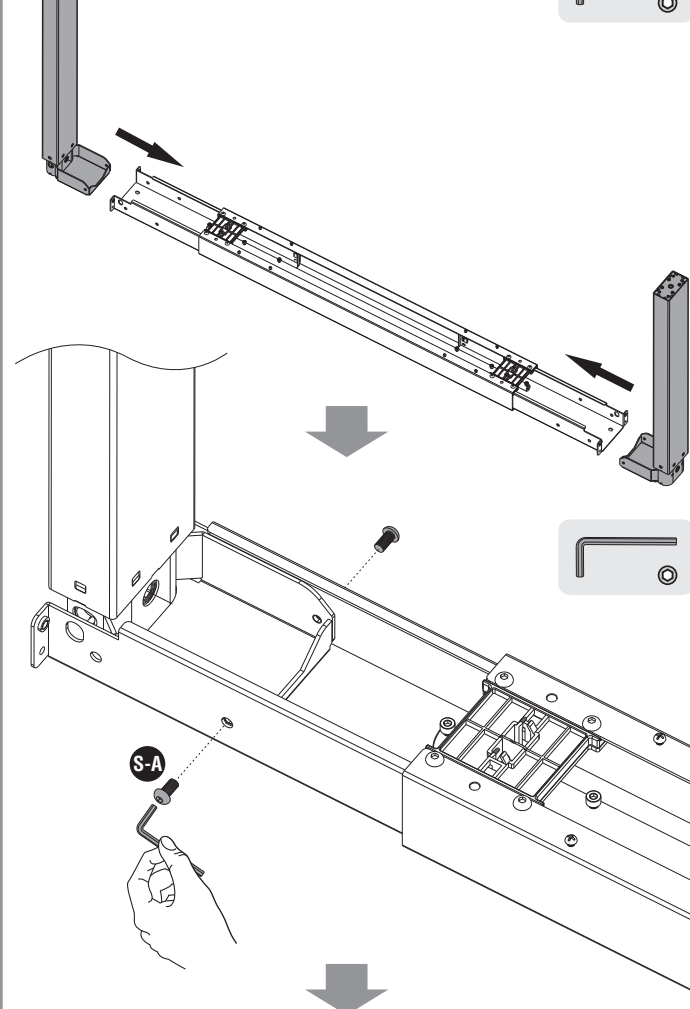
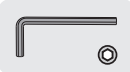
- Adjust the extension frame length to suit the desktop and tighten all screws to secure the extension frame in place.

extension frame

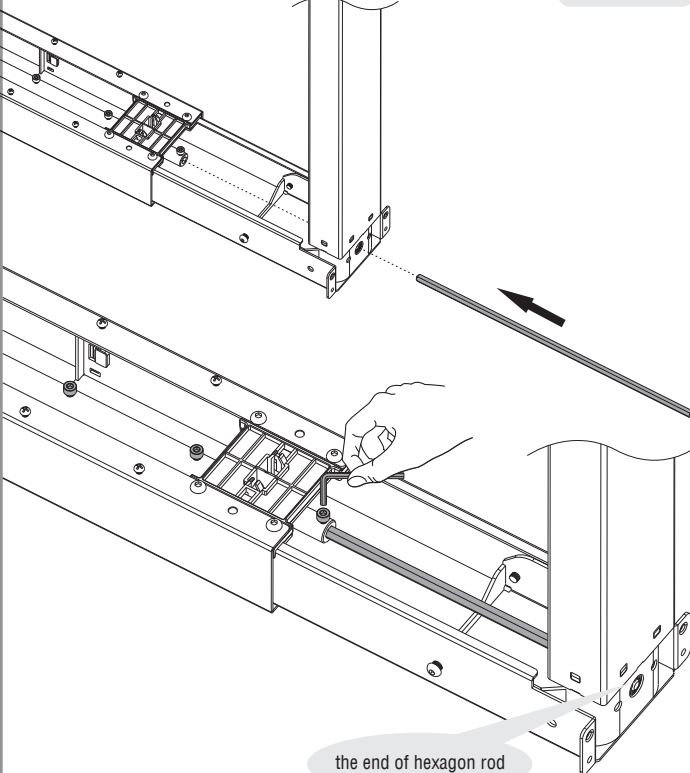
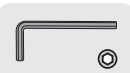
2

Assembling the Lifting Columns

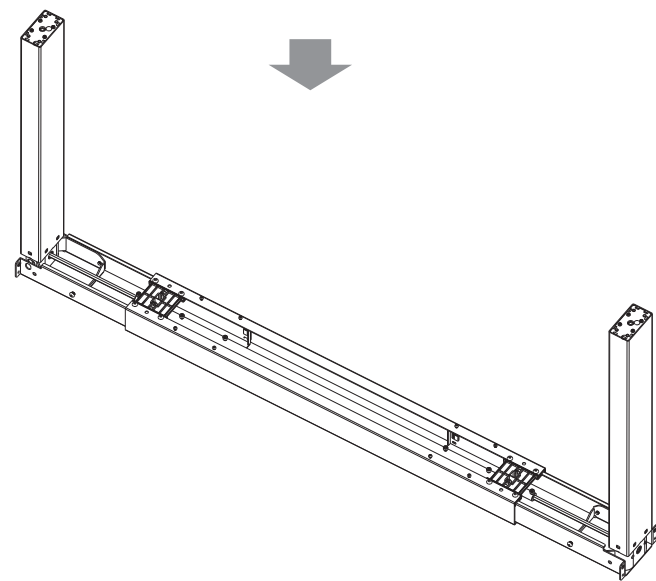
- Attach the lifting columns to the frame using the screws provided and tighten all screws with the Allen key.



- Reinsert the hexagon rod into the frame.
- Tighten all screws to secure the hexagon rod.

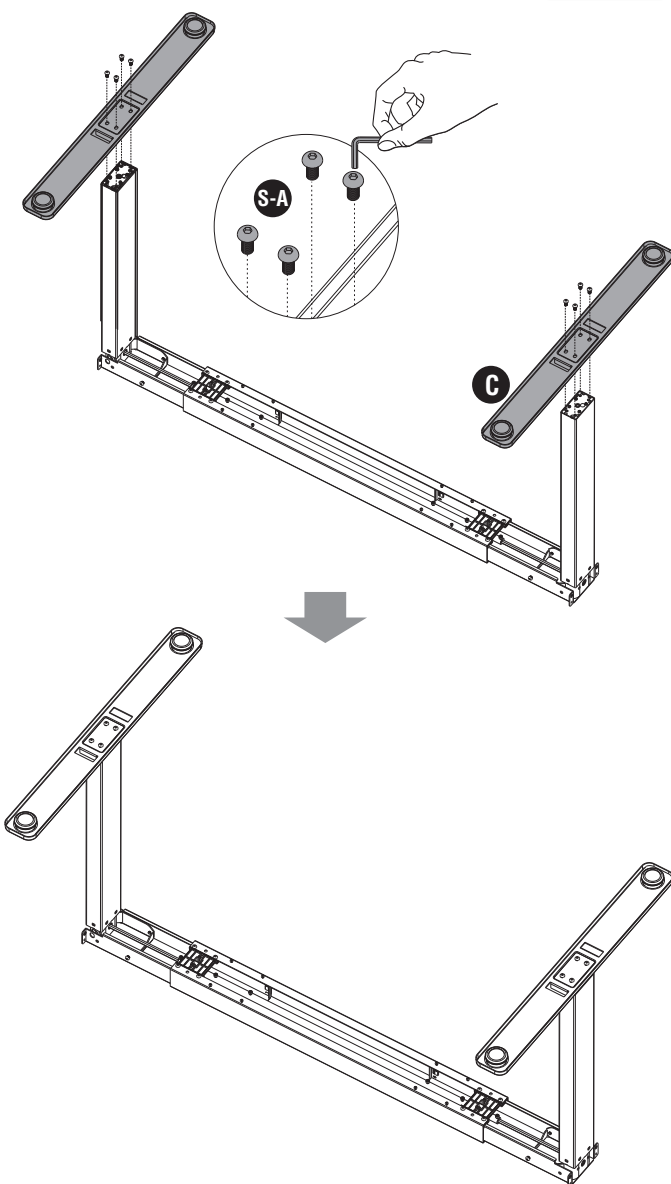


the end of hexagon rod



3 Installing the Base Supports

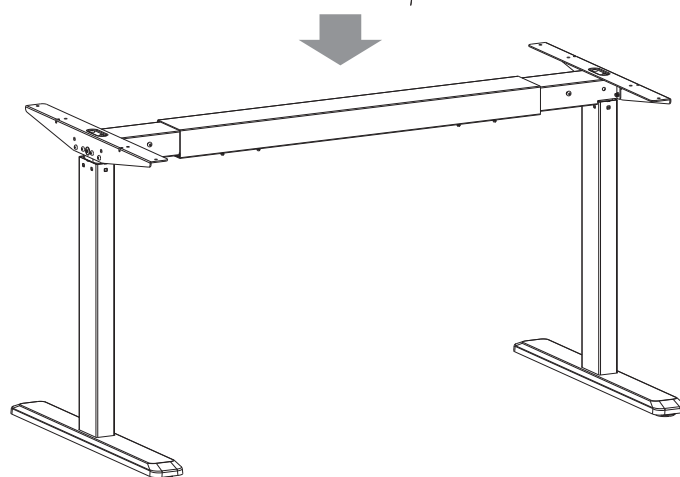
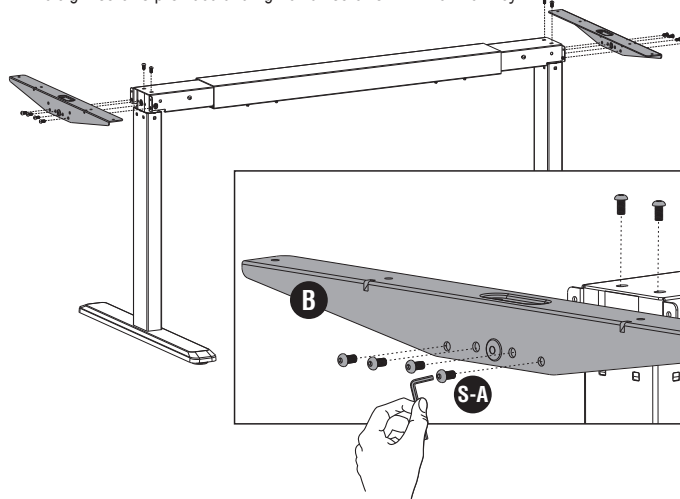
- Attach the base supports to the lifting columns using the eight screws provided and tighten all screws to secure.



4 Installing the Upper Supports

HEAVY!
An assistant is needed for this step.

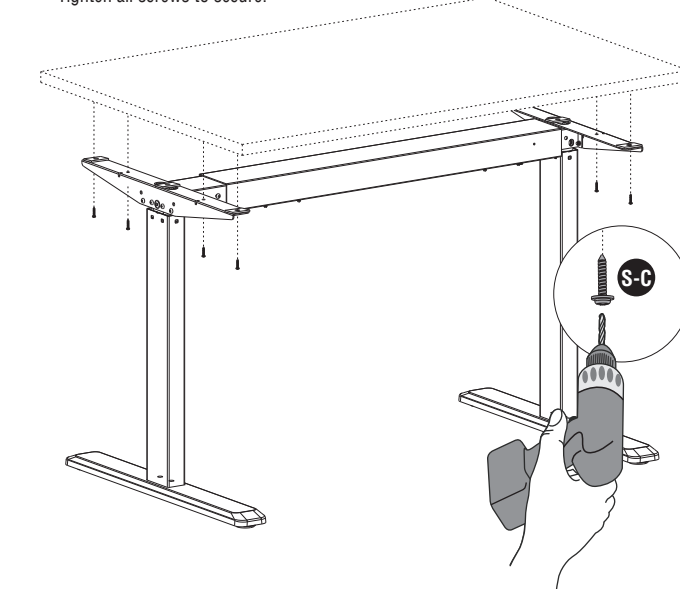
- Turn the desk frame upright onto a level surface.
- Attach the two upper supports to both ends of the frame using the eight screws provided and tighten all screws with the Allen key.



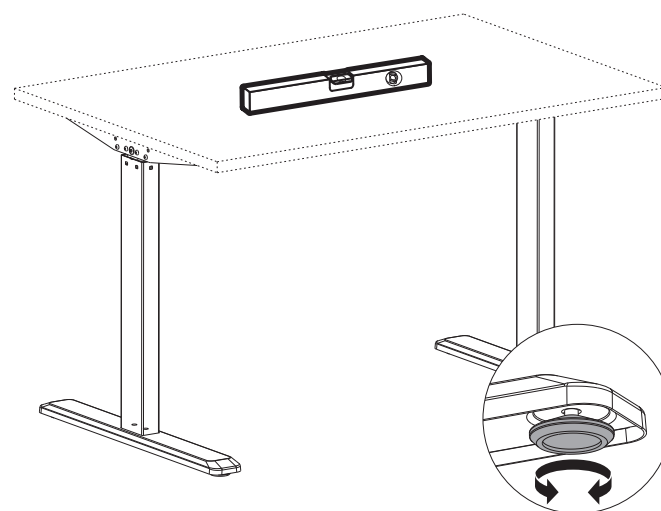
5 Installing the Desktop (Optional)

HEAVY!
An assistant is needed for this step.

- Attach the desktop to the frame using the proper screws.
- Tighten all screws to secure.

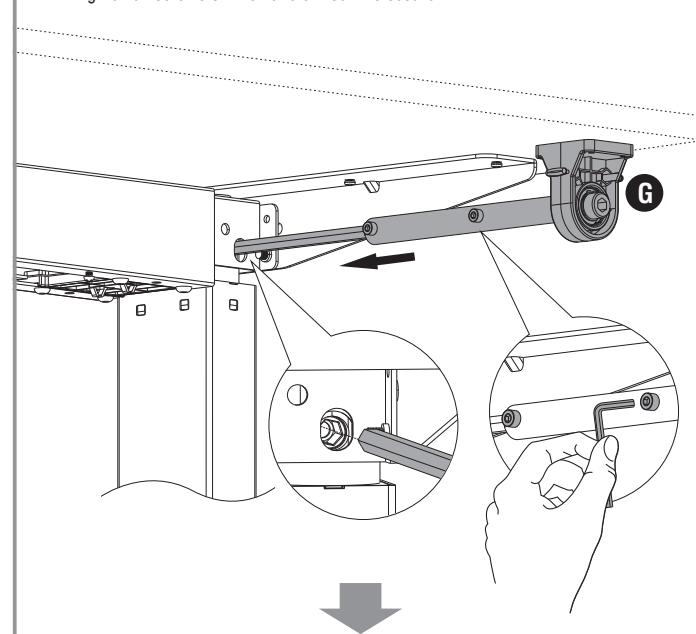


- Each foot pad can be adjusted independently for fine tuning.
- Slightly turn the foot pad to lower or raise the base.
- Use a level to make sure the desktop is even.

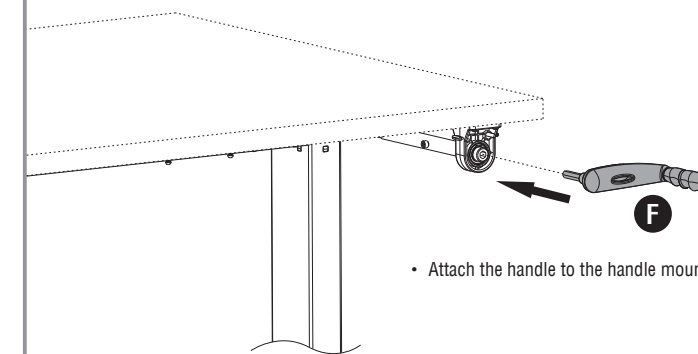
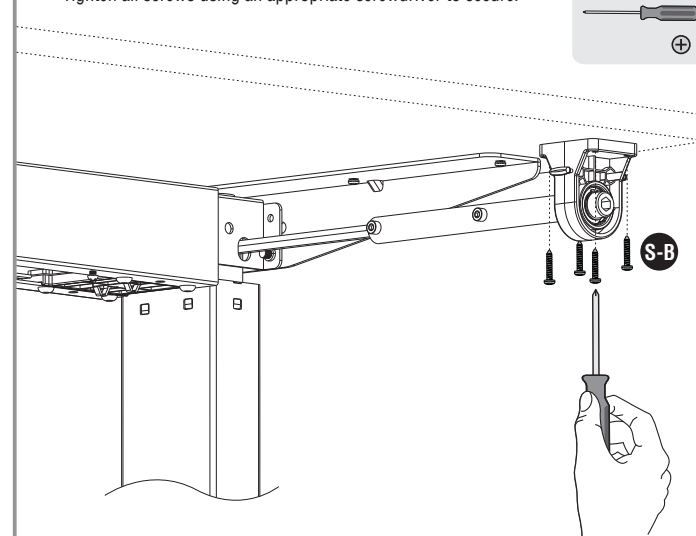


6 Installing the Handle Mount and Handle

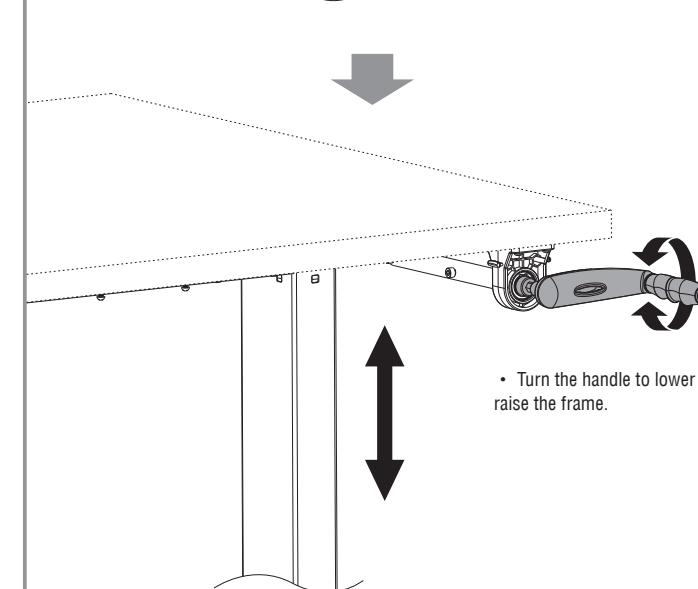
- Insert the handle mount into the frame mounting holes.
- Adjust the handle mount length to suit and leave about 20mm space from the edge of desktop.
- Tighten all screws on the handle mount to secure.



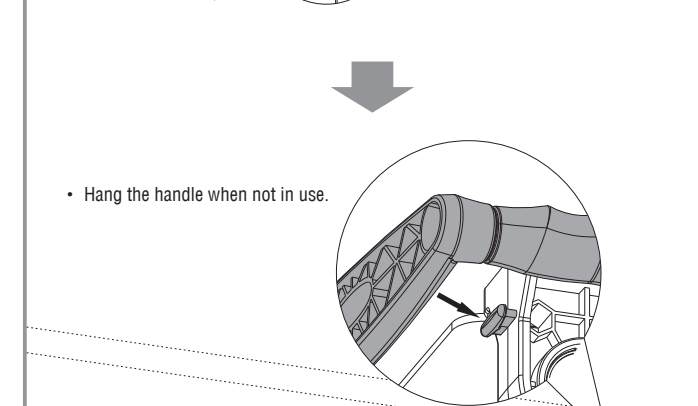
- Attach the handle mount to the back of desktop using the four screws.
- Tighten all screws using an appropriate screwdriver to secure.



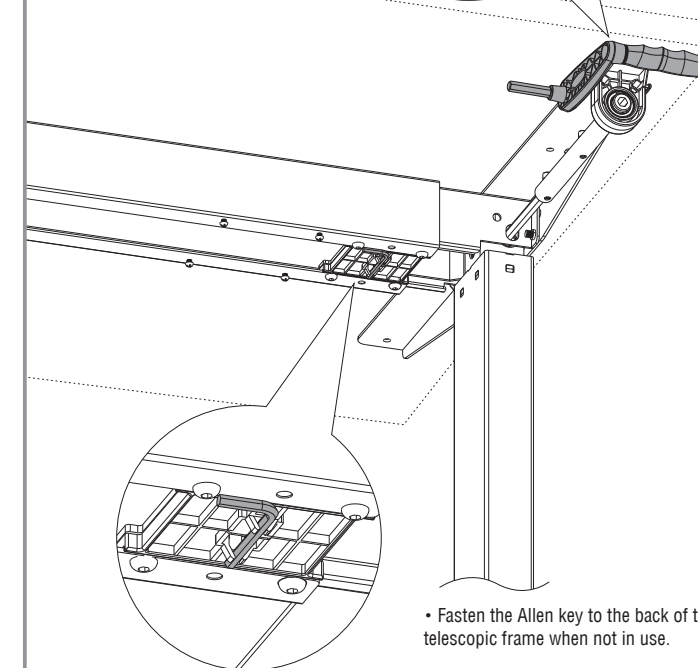
- Attach the handle to the handle mount.



- Turn the handle to lower or raise the frame.



- Hang the handle when not in use.



- Fasten the Allen key to the back of the telescopic frame when not in use.