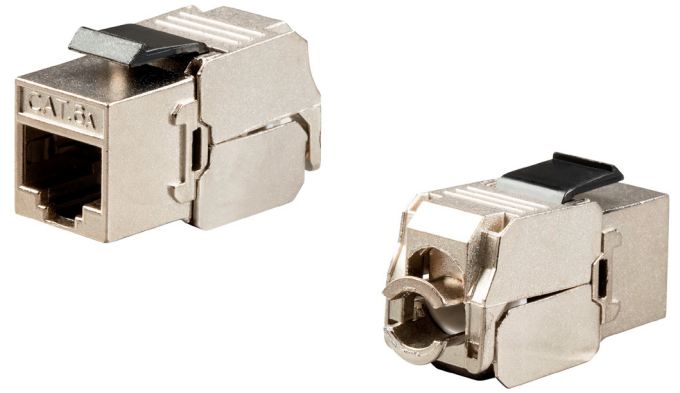


## PRODUCT FEATURES

- Meets or exceeds Cat.6A EIA/TIA568B.2-1 Standard
- Modular Housing and Cover: Al & Zn with Ni plated
- RJ45 Jack Insert: Housing-Fireproof PBT UL-94V0, Contact-8P8C Beryllium bronze with 3 to 50u" gold plated
- PCB: FR-4/1.6 mm UL-94V0
- IDC: Body-Fireproof PC/ABS UL-94V0, Pin-Phosphor bronze & tinned
- Label Color Code:T568A/B
- IDC Terminal: For 22-26AWG Cable



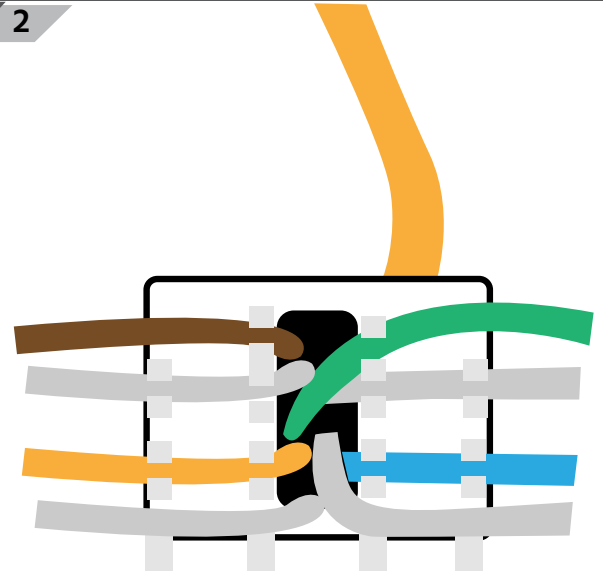
## INSTALLATION

### STEP 1



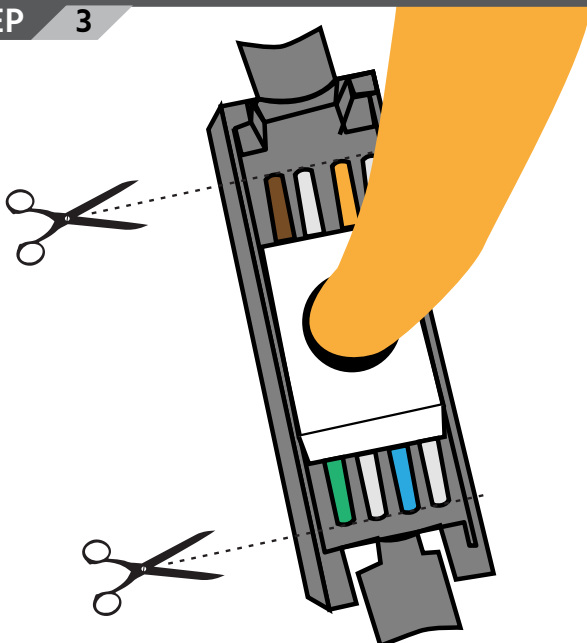
Strip approximately 40mm of the cable jacket and then fold back the foil and the braid shield.

### STEP 2



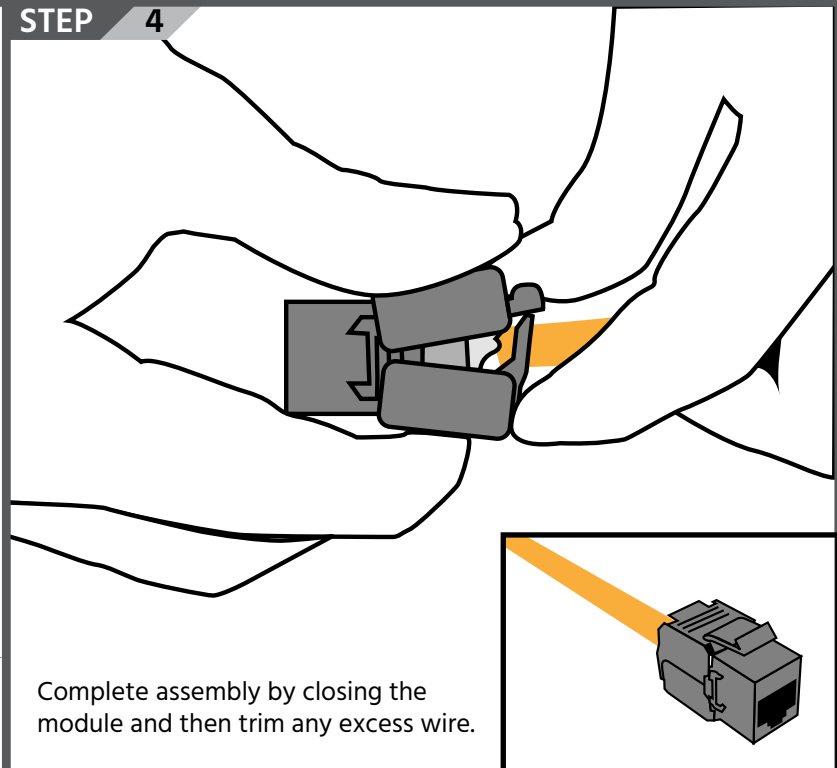
Follow the labelled colors on the modular cover and set each wire into the proper position to ensure the ground wiring connects properly.

### STEP 3



Place the assembled modular cover into the module and cut the wires evenly to fit.

### STEP 4



Complete assembly by closing the module and then trim any excess wire.