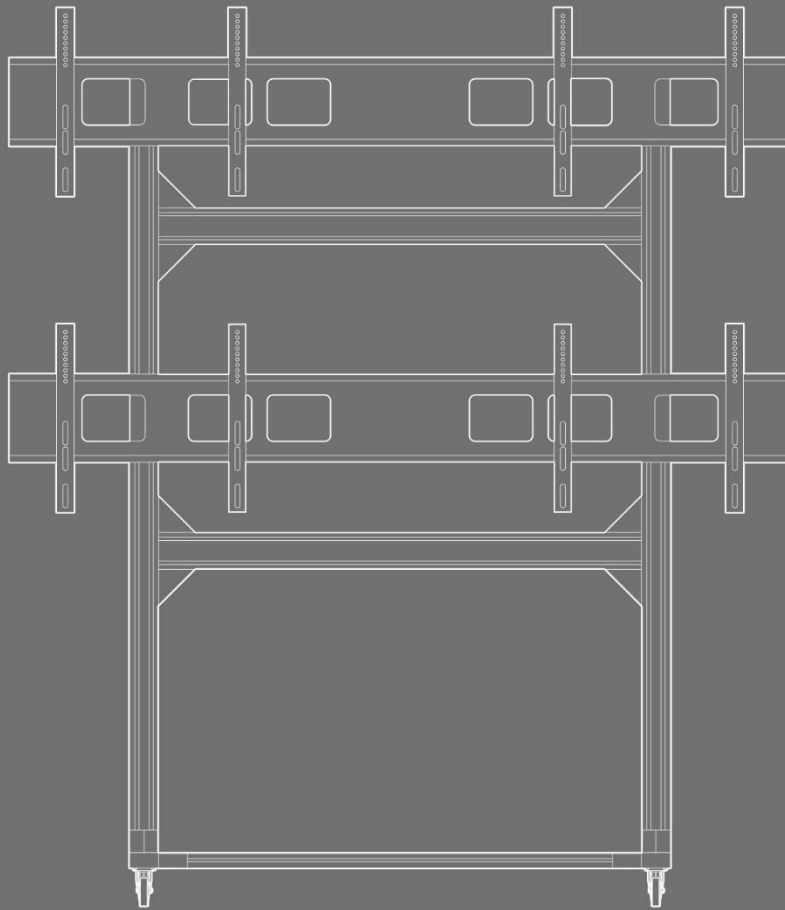


# 2x2 Video Wall Display Cart

with Micro Adjusting arms



PID:16116

User's Manual

# CONTENTS

SAFETY WARNINGS AND GUIDELINES ..... 3

CUSTOMER SERVICE..... 3

PACKAGE CONTENTS .....4

ASSEMBLY AND INSTALLATION..... 5

TECHNICAL SUPPORT .....14

SPECIFICATIONS.....14

## SAFETY WARNINGS AND GUIDELINES

Please read this entire manual before using this device, paying extra attention to these safety warnings and guidelines. Please keep this manual in a safe place for future reference.

- Ensure that any surface this cart will be placed on is sufficiently robust to support the combined weight of the cart and installed displays, as well as that of any persons moving the cart into place.
- This cart can support four displays weighing up to 100 lbs. (45kg) each for a total of 400 lbs. (181kg). Exceeding the rated weight capacity can result in damage to the equipment or severe personal injury.
- Visually inspect the cart periodically and after it is transported to ensure that all parts are secure and that all screws are tight. Do not use the cart if any parts are damaged or missing.
- Do not install anything other than four flat-screen displays on this cart. Other loads could change the center of balance and cause the cart to tip over, resulting in equipment damage and possible serious injury.
- While much of this cart can be assembled by a single person, final assembly, display installation, and final adjustment should be performed by two people.

## CUSTOMER SERVICE

The Monoprice Customer Service department is dedicated to ensuring that your ordering, purchasing, and delivery experience is second to none. If you have any problem with your order, please give us an opportunity to make it right. You can contact a Monoprice Customer Service representative through the Live Chat link on our website [www.monoprice.com](http://www.monoprice.com) during normal business hours (Mon-Fri: 5am-7pm PT, Sat-Sun: 9am-6pm PT) or via email at [support@monoprice.com](mailto:support@monoprice.com)

# PACKAGE CONTENTS

Please take an inventory of the package contents to ensure you have all the items listed below. If anything is missing or damaged, please contact Monoprice Customer Service for a replacement.



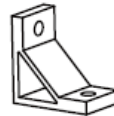
Left Monitor Bracket(x4)



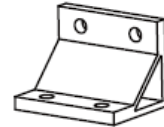
Right Monitor Bracket(x4)



Wall Plate Adapter(x4)



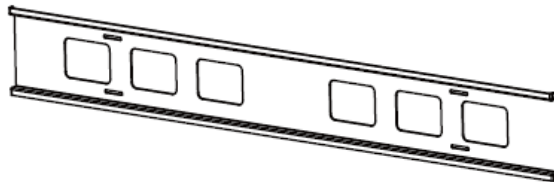
4040 Corner(x12)



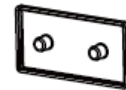
8080 Corner(x4)



Upright(x2)



Wall Plate(x2)



End Cap(x6)



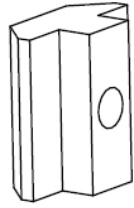
Beam(x3)



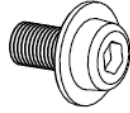
Base Bar(x2)



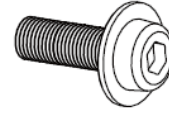
Universal Wheel (x4)



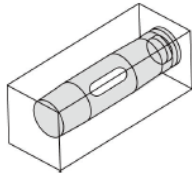
T-Nuts  
56x



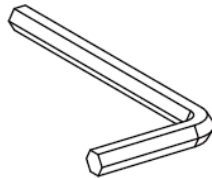
Combination screw  
M8x20  
54x



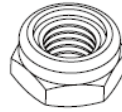
Combination screw  
M8x35  
2x



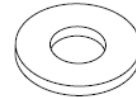
Level(x1)



Hexagon wrench  
M6(x1)



M8 Nut  
(black)  
16x



Ø 8.2x Ø16x1.5  
washer 1 (black)  
16x



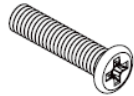
M6x12  
(White)  
16x



M6x25  
(White)  
16x



M8x12  
(White)  
16x



M8x25  
(White)  
16x



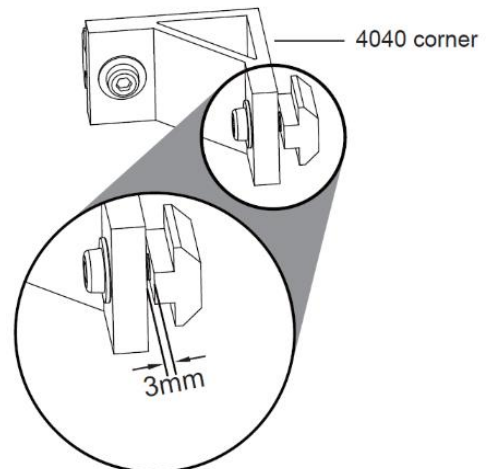
Ø 6.2x Ø16x1.5  
washer 2 (White)  
16x



Ø17.0x Ø 9.0x 14.0  
spacer(black)  
16x

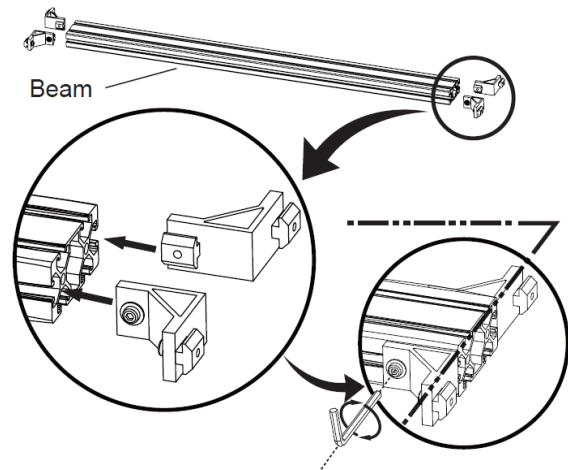
## ASSEMBLY AND INSTALLATION

1. For ten of the twelve **4040 Corner** pieces, attach two **T-Nuts** using two **M8x20 Combination Screws**. Tighten the screws slightly by hand, leaving a 3mm gap between the **Corner** and the **T-Nut**, as shown in the accompanying drawing. These corner assemblies will be referred to as **Ordinary 4040 Corner Assemblies**.



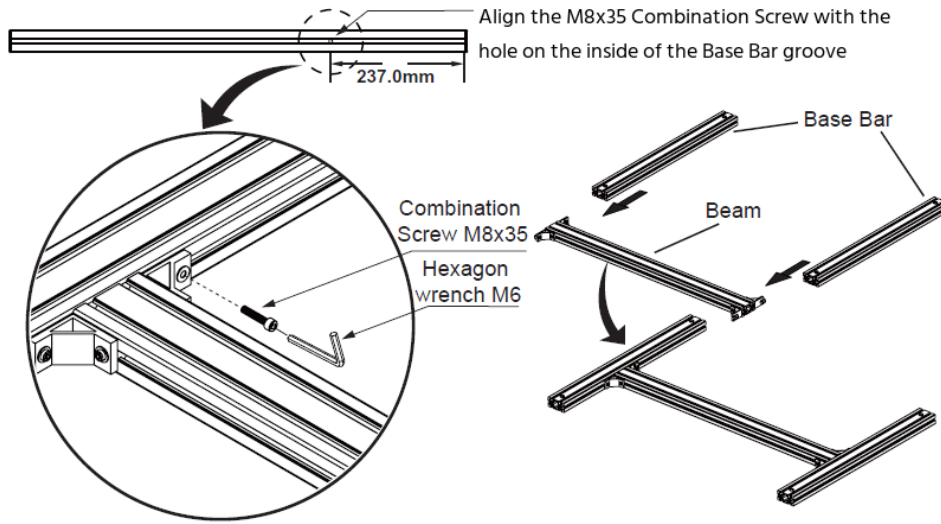
- For the remaining two **4040 Corner** pieces, attach one **T-Nut** using an **M8x20 Combination Screw**, then attach a second **T-Nut** using one **M8x35 Combination Screw**. Tighten the **M8x35 Combination Screw** until the end of the screw is flush with the back of the **T-Nut**. This will result in a larger than 3mm gap, but will be necessary when attaching the lower **Beam** to the two **Base Bars**. These two **4040 Corner** assemblies will be referred to as **Special 4040 Corner Assemblies**.

- Create two **Upper Beam Assemblies** by attaching four **Ordinary 4040 Corner Assemblies**. To do this, align the **T-Nut** with the groove in the **Beam** and slide the **Corner Assembly** into the groove until the exposed side of the **Corner Assembly** is flush with the end of the **Beam**. Tighten the **M8x20 Combination Screws** on the **T-Nuts** inserted into the **Beam** grooves using the included **M6 Hexagonal Wrench**.

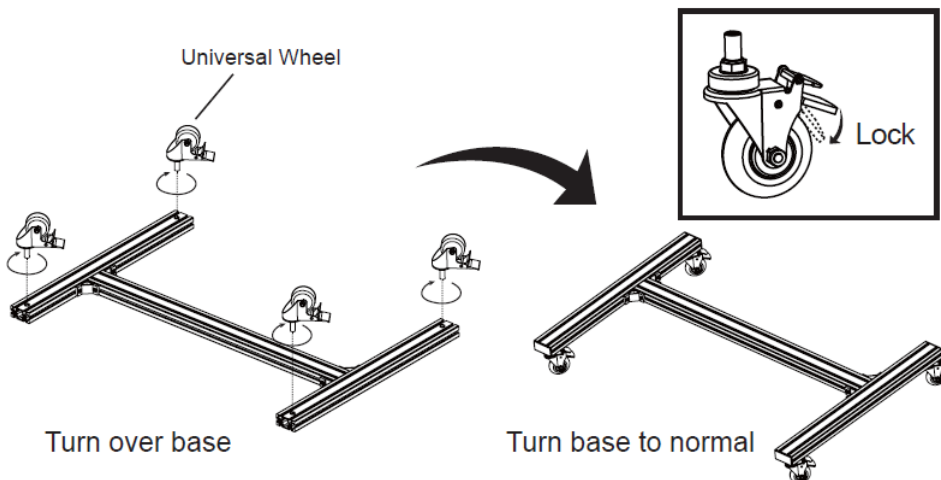


- Create one **Lower Beam Assembly** by attaching two **Ordinary 4040 Corner Assemblies** on one side of the **Beam**, using the instructions in step 3 above. Then attach the two **Special 4040 Corner Assemblies** to the other side of the **Beam**, with the sides with the **M8x35 Combination Screws** on the outside. Ensure the exposed side of each corner assembly is flush with the ends of the **Beam**, then tighten the **M8x20 Combination Screws** on the **T-Nuts** inserted into the **Beam** grooves using the included **M6 Hexagonal Wrench**.
- Examine each of the two **Base Bars**. Inside one of the grooves on each, at a distance of 237mm from the end, is an unthreaded hole. This hole is used to properly position the **Lower Beam Assembly** on the **Base Bars**. Align the **T-Nut** with the **M8x35 Combination Screw** into the groove on one of the **Base Bars**, then slide the **Lower Beam Assembly** onto the **Base Bar** until the **M8x35 Combination Screw** is aligned with the hole on the inside of the groove. Ensure that the beam is located on the short side of the hole in the **Base Bar**, then tighten the **M8x35 Combination Screw** using the **M6 Hexagonal Wrench**. The screw will extend into the hole, thereby

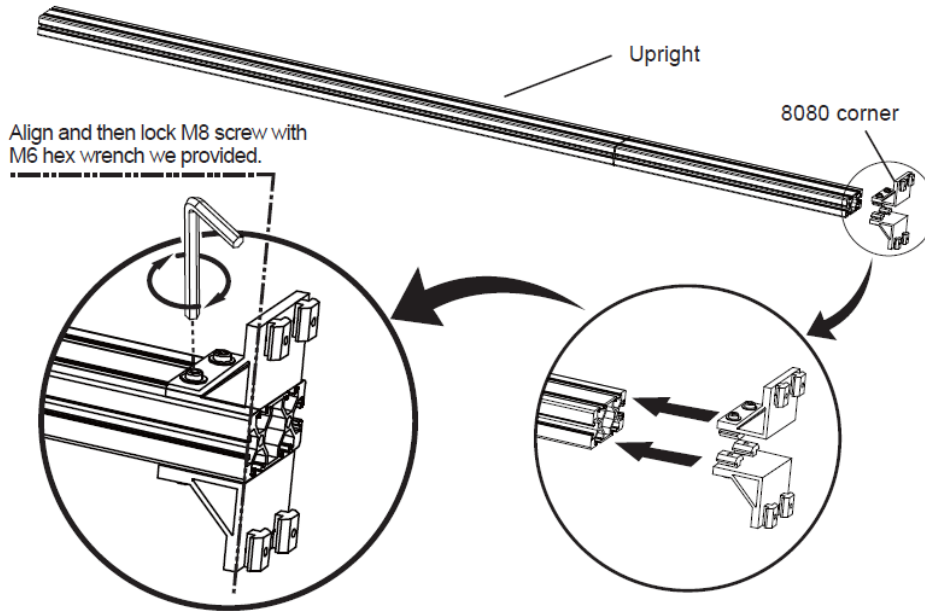
properly positioning and securing the **Lower Beam Assembly** onto the **Base Bar**. Next, tighten the **M8x20 Combination Screw** on the other side of the **Lower Beam Assembly** using the **M6 Hexagonal Wrench**. Using the same procedure, attach the other **Base Bar** to the other end of the **Lower Beam Assembly**. Ensure that the caster holes on the **Base Bars** are all on the same side. Note that the short side is the back of the cart.



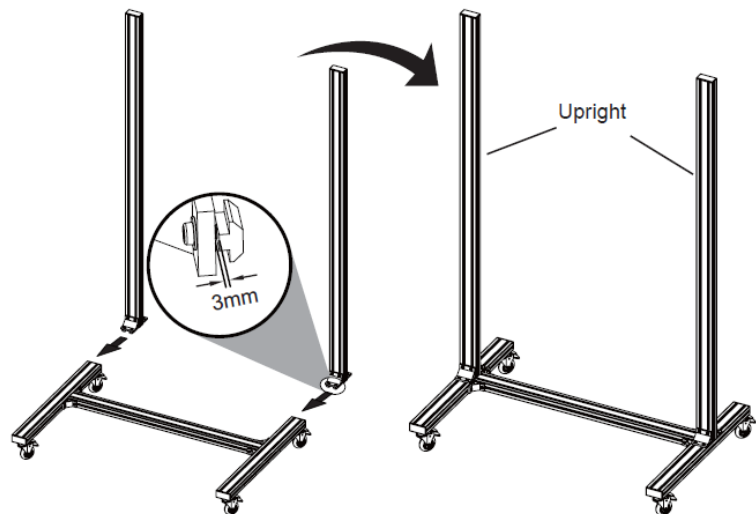
6. Position the **Base Assembly** with the caster holes up. Depress the locking lever on each **Universal Wheel** to lock the wheel. Insert a **Universal Wheel** into one of the caster holes on the **Base Bars** and turn it clockwise to screw it into the **Base Bar**. Repeat with the other three **Universal Wheels**. Flip the **Base Assembly** over to rest on the casters.



7. Using the same procedure as in step 1 above, attach four T-Nuts to each **8080 Corner** piece using four **M8x20 Combination Screws**.
8. Create two **Upright Assemblies** by attaching two **8080 Corner Assemblies** to one end of each **Upright** piece using the same procedure as in step 3 above. Ensure the exposed sides of the **8080 Corner Assemblies** are flush with the end of the **Upright**, then tighten the **M8x20 Combination Screws** using the **M6 Hexagonal Wrench**.

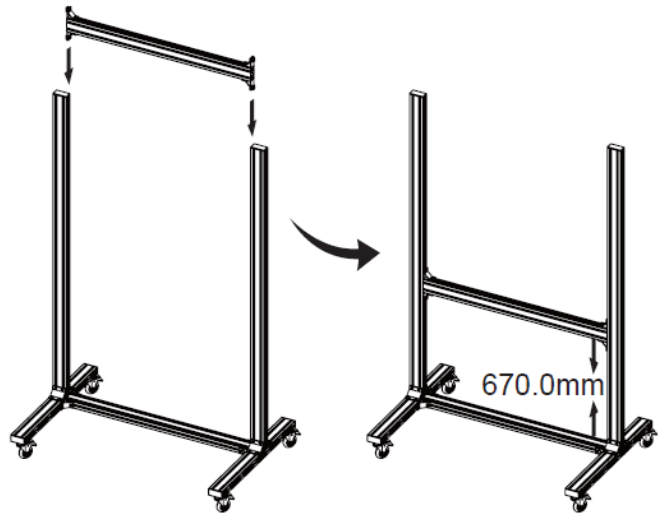


9. Align the **T-Nuts** on one of the **Upright Assemblies**, then slide it into the two grooves on top of one of the **Base Bars** on the **Base Assembly**. Align the **Upright Assembly** with the **Lower Beam Assembly**, as shown in the accompanying illustration. Tighten the **M8x20 Combination Screws** using the **M6 Hexagonal Wrench**. Install the second **Upright Assembly** onto the other side of the **Base Assembly** using the same procedure.



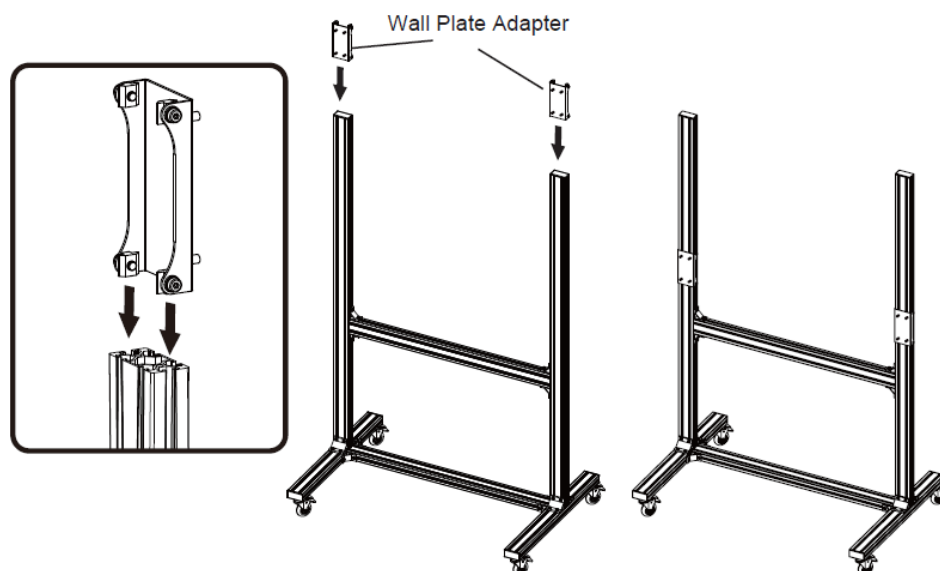


10. Align the **T-Nuts** on one of the **Upper Beam Assemblies**, then slide the **Beam Assembly** into the grooves on the insides of the two **Upright Assemblies**, as shown. Position the bottom of the **Upper Beam Assembly** about 670mm (26.4") above the top of the **Base Assembly**, then tighten the **M8x20 Combinations Screws** using the **M6 Hexagonal Wrench**.

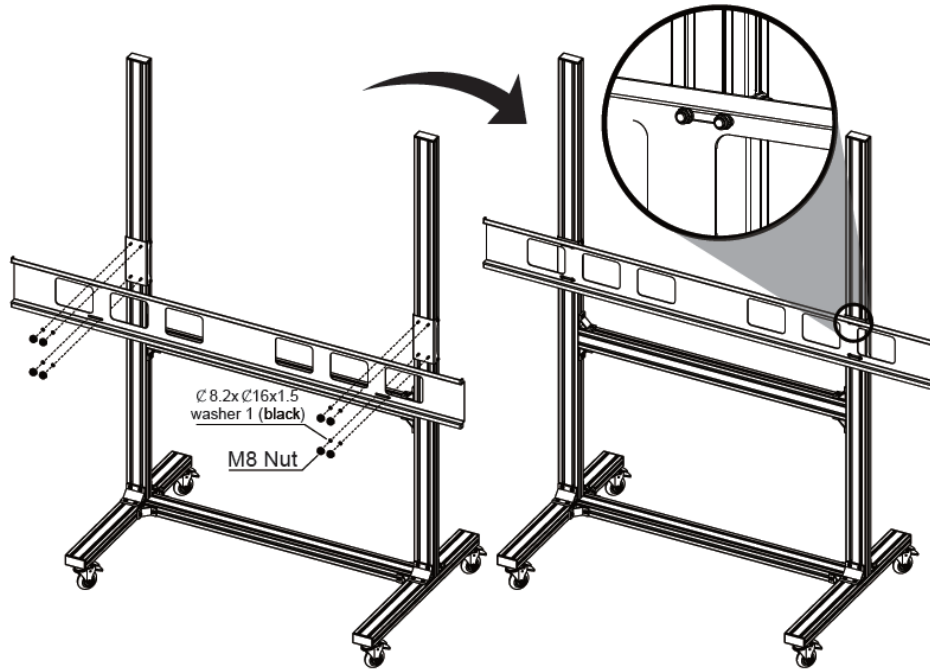


Note that the 670mm distance does not have to be exact, but each side of the **Upper Beam** assembly should be exactly the same distance above the **Base Assembly**. Use the included **Level** as necessary.

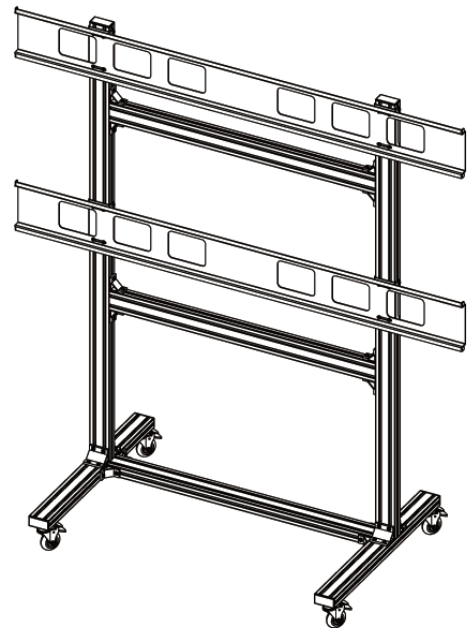
11. Attach four **T-Nuts** to the inside of each of the four **Wall Plate Adapters** using the same procedure as in step 1 above.
12. Align the **T-Nuts** on one of the **Wall Plate Adapter Assemblies**, then slide it onto one of the **Upright Assemblies**, with the solid side facing forward, as shown. Tighten the **M8x20 Combination screws** using the **M6 Hexagonal Wrench**. Install a second **Wall Plate Adapter Assembly** to the other **Upright Assembly**, at the same height as the first, then secure it in place.



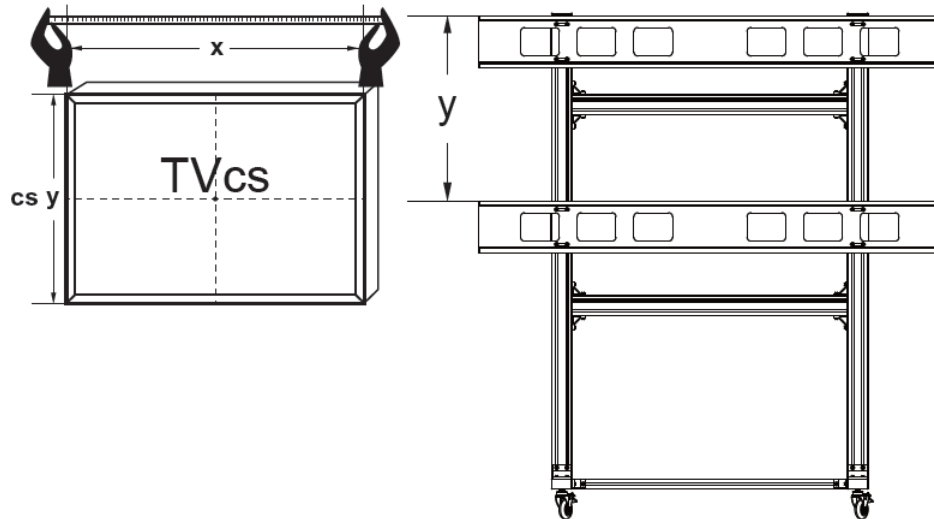
13. Using two people, lift one of the **Wall Plates** and place it on the threaded rods on the front of the **Wall Plate Adapter Assemblies**. For each threaded rod, install one **Ø8.2xØ16x1.5 Washer 1** and one **M8 Nut**. After all washers and nuts have been installed onto the threaded rods, use the included **Level** to ensure the **Wall Plate** is level, then tighten the **M8 Nuts** using an appropriate wrench (not included).



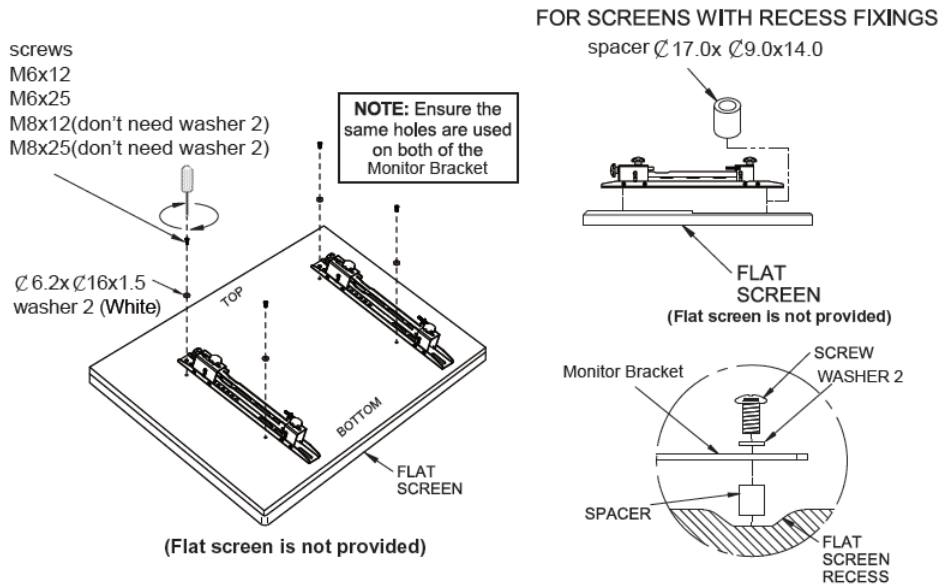
14. Using the same procedure as in step 10 above, install the second **Upper Beam Assembly** onto the two **Upright Assemblies**.
15. Using the same procedure as in step 12 above, install the two remaining **Wall plate Adapter Assemblies** onto the two **Upright Assemblies**.
16. Using the same procedure as in step 13 above, install the second **Wall Plate** onto the second pair of **Wall Plate Adapter Assemblies**.
17. Measure the vertical height of your displays.



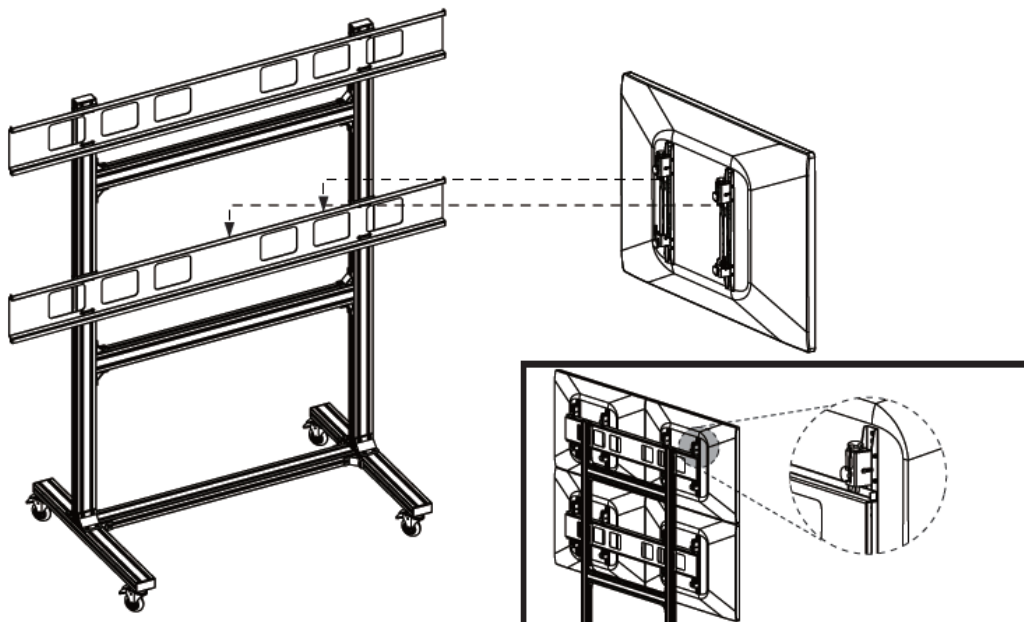
18. Using two people, slightly loosen the screws on the upper **Wall Plate Adapter Assemblies** and adjust the distance between the top of each **Wall Plate** to match the height of your displays, then tighten the screws to secure the **Wall Plate Assembly** in place.



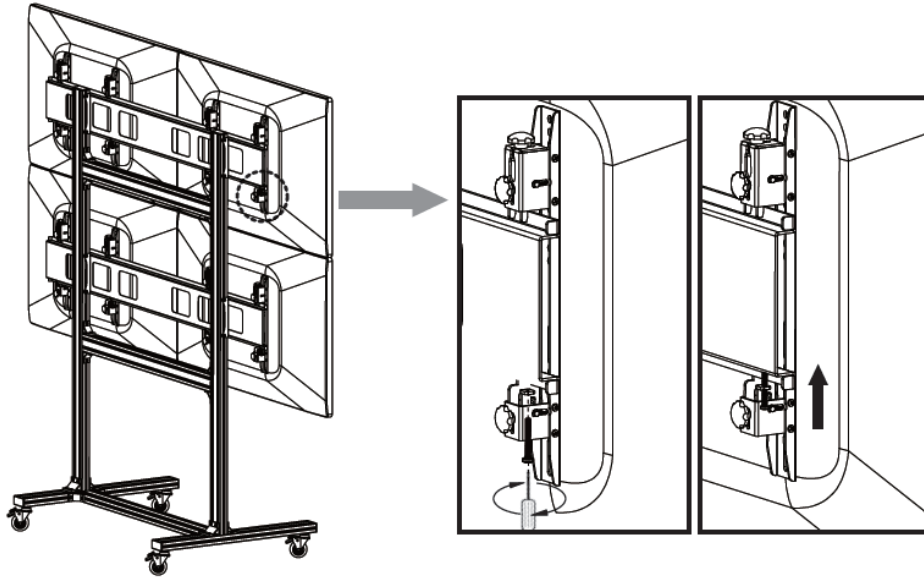
19. Spread a blanket or towel out on the floor, a table, or other flat surface. Place one of your displays face down on the blanket/towel.
20. Locate the VESA mounting holes on the back of the display. Using one **M6x12 Screw** and one **M8x12 Screw**, determine which screw fits the VESA holes. Place one of the **Right Monitor Brackets** over the two VESA holes on the left side of the display. Position the bracket so that it is centered on the two vertical VESA holes. If the bracket is not flush against the holes or if the holes are recessed into the back of the display, you will need to use the **Ø17.0xØ9.0x14.0 Spacers** between the bracket and the back of the display. If using the spacers, you will need to use the **M6x25 Screws** or the **M8x25 Screws**, otherwise use the **M6x12 Screws** or the **M8x12 Screws** to secure the bracket to the back of the display. Be sure and use the **Ø6.2xØ16x1.5 Washers 2** on the screws. Next, install one of the **Left Monitor Brackets** onto the holes on the right side of the display. The brackets are properly installed when the adjustment knobs are at the top and on the outside of the brackets. Refer to the illustration on the next page.



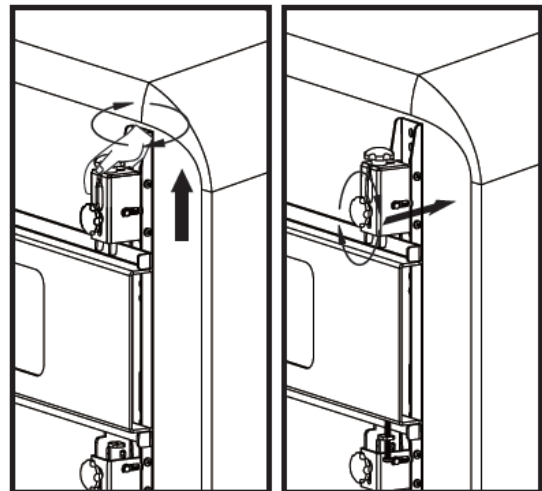
21. Repeat step 20 to install the **Mounting Brackets** on the other three displays.
22. Using two people, lift one of the displays and hook the **Mount Brackets** onto the lower **Wall Plate** on the right side. Slide the display left or right until the left side is at the center of the **Wall Plate**. Repeat the process to place the remaining displays on the **Wall Plates**.



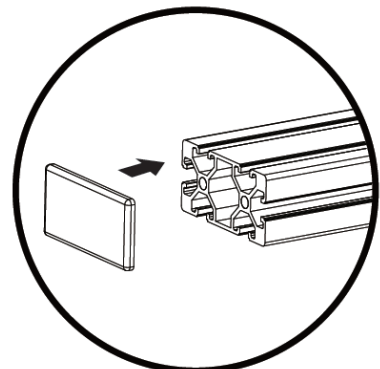
23. Ensure that all displays are properly positioned, then move around to the back and tighten the screws at the bottom of each bracket to secure the bracket to the **Wall Plate**.



24. Each **Monitor Bracket** has two knobs for fine tuning the positioning in or out and up or down. Use the adjustment knobs as necessary to fine tune the positioning of each display. The adjustment range is 20mm.



25. Install **End Caps** at the each end of the **Base Bars** and at the top of the **Upright Assemblies**. Avoid excessive force to prevent damage to the **End Caps**.



*Congratulations, your 2x2 Video Cart is ready for use!*

## TECHNICAL SUPPORT

Monoprice is pleased to provide free, live, online technical support to assist you with any questions you may have about installation, setup, troubleshooting, or product recommendations. If you ever need assistance with your new product, please come online to talk to one of our friendly and knowledgeable Tech Support Associates. Technical support is available through the online chat button on our website [www.monoprice.com](http://www.monoprice.com) during regular business hours, 7 days a week. You can also get assistance through email by sending a message to [tech@monoprice.com](mailto:tech@monoprice.com)

## SPECIFICATIONS

Model	16116
Number of Displays	4
Minimum Display Size	32"
Maximum Display Size	55"
Minimum VESA Size	75 x 75
Maximum VESA Size	600 x 400
Weight Capacity	100 lbs. (45 kg) per display / 400 lbs. (181 kg) total
Weight	58.4 lbs. (26.5 kg)