

# Instruction / Installation Sheet

## AC Power Duplex Surge Module

### Part #: 80-0050

# DATA COMM™

## ELECTRONICS

DataComm Electronics, Inc.  
6349 Peachtree Street  
Norcross, GA 30071-1725  
888.223.7977  
www.datacommelectronics.com

#### Parts Included:

- 2 ¾" Steel Electrical Box, 12.5 cu in
- 15 Amp/125 Volt Duplex Surge Protector Outlet
- Four (4) #6-32 Screws
- Decora Wall Plate
- Two (2) Wall Plate Screws

#### Tools Needed:

- Phillips Head Screw Driver
- Wire Cutter and/or Wire Stripper

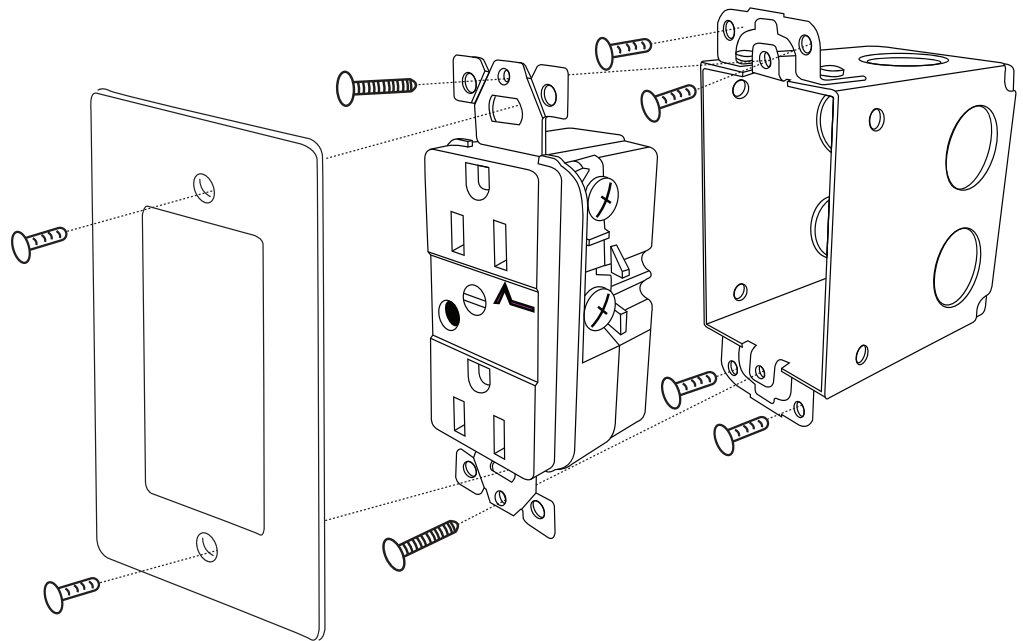
DataComm Electronics' AC Power Duplex Surge Module is designed to provide protection against short term over-voltage conditions as well as from RFI (radio frequency interference). Surge Protector Outlet alerts you to the failure of the surge protection component by means of an audible signal. If alarm sounds, device has "received" power surges in excess of its capacity and is no longer functioning as a surge protector. To shut off alarm, simply turn the "Alarm Off" screw on the front of the outlet clockwise. Note: When alarm sounds and the "Alarm Off" screw is turn off, the outlet still functions as a normal duplex outlet without surge protection.

#### WARNING:

Before installing or working on any electrical circuit be certain the power is off by switching the circuit breaker off. Test the power to make sure the power is off. Be sure to install DataComm Electronics' AC Power Duplex Surge Module in accordance with the National Electrical Code (NEC) and local codes.

#### Surge Protector Outlet Specifications:

Inside the AC Power Duplex Surge Module are two 22mm square MOV's providing 240 joules /15000A of surge protection for each mode. Meets UL Standards 1449 3rd Edition and 498: CSA Certified. Damage-alert alarm sounds when surge protection is no longer functioning and keeps sounding until the muting screw is utilized or the outlet is replaced. Power-on indicator light verifies instantly that power is available at the outlet and the suppression circuit is fully functional; light off means power has been interrupted, flashing light indicates surge protections circuitry has been damaged.



#### Installation Instructions:

1. To install the AC Power Duplex Surge Module, begin by removing the rectangular knock-out in your telecommunication/low-voltage enclosure. Then remove the necessary knock-out in the Steel Electrical Box.
2. Depending on your local electrical code, route 12/2 or 14/2 with ground UL approved electrical building wire that you have pulled from a power source (an independent 15A circuit is recommended). Route through metal or plastic conduit when appropriate or required by code.
3. Now use the four (4) #6-32 screws provided to secure the electrical outlet box to the telecommunication/low-voltage enclosure. Secure conduit to Steel Electrical Box if appropriate.
4. Using the Wire Cutters or Wire Strippers, strip off approximately 3 inches of the outer jacket of the UL approved building wire. Be careful not to cut the jacket of the inner wires.
5. Connect the hot line (black) wire to the brass colored terminal screw and neutral (white) wire to the silver colored terminal screw.
6. Be sure to connect the grounding (green) or bare grounding wire to the green colored terminal screw.
7. Once you have wired the supplied Duplex Receptacle, screw it into the Electrical Outlet Box until it is firmly secured.
8. Install the Décor Wall Plate over the Duplex Receptacle with the two (2) included Wall Plate Screws.

DataComm Electronics' products shall be installed and used only as indicated in DataComm Electronics' product instruction sheets.

