

Step 1

First use the included 2.5mm Hex Wrench and 4 of the M5x20 Screws (2 on each side of the printer), to attach the vertical Z-Axis gantry assembly to the base.



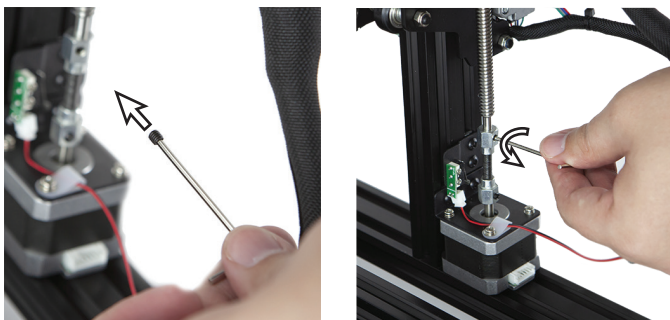
Step 2

In order to remove the screw rod that is attached to the left frame rail underneath the bed; you will need to use the 2.5mm Hex Wrench to loosen the screw furthest to the front of the printer above the wiring harness. Once the screw rod is removed, tighten back down the screw.



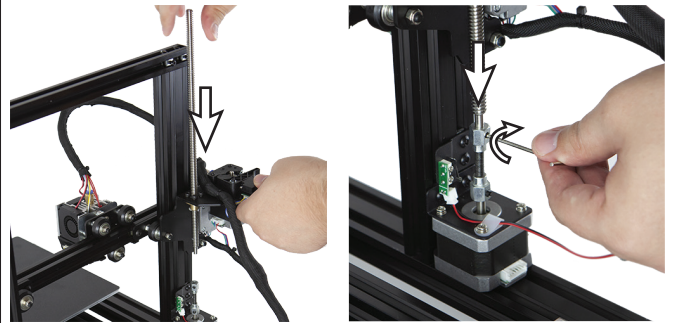
Step 3

To prepare the stepper motor to attach the now free screw rod, you will locate the upper screw on the top portion of the coupler, located to the rear left side of the printer above the stepper motor and loosen the screw.



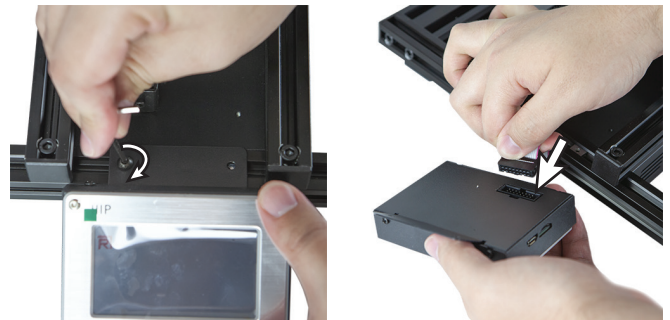
Step 4

Insert the screw rod into the hole on the top left portion of the printer and into the coupler where the top screw was loosened on the previous step and tighten the screw once seated.



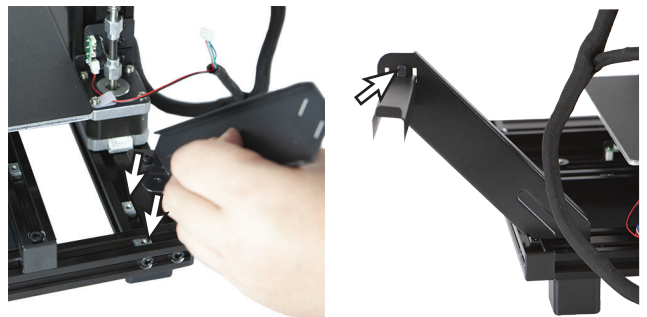
Step 5

Using the 2.5mm Hex Wrench and 2 M4x6 screws to attach the LCD screen to the front portion of the printer located between the two inner frame rails. Once attached, you will also connect the ribbon cable to the back of the LCD module.



Step 6

Use the included 2.5mm Hex Wrench and 2 M4x6 screws to attach the filament holder to the frame located to the far rear left of the printer.

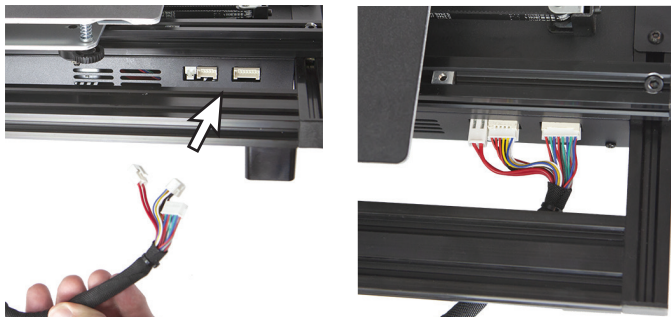


MA10/MA10 Mini

Quick Start Guide (continued)

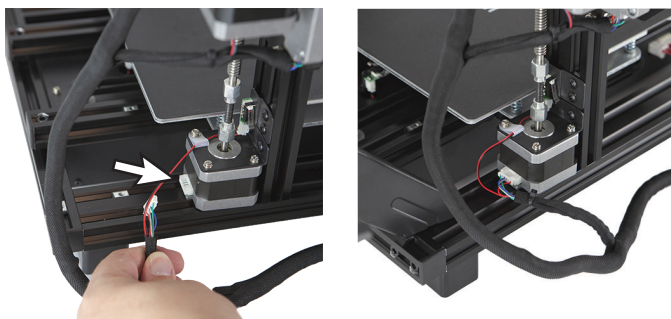
Step 7

Connect the hot end power cabling to the indicated ports.



Step 8

Connect the motor power cabling to the indicated ports



Step 9

Connect the power cable to the Printer's DC port and attach the screw rod cap to the top portion of the Z-axis.



For additional information and more detailed setup instructions see the User's Manual or visit www.monoprice.com and search **34437** or **34438**.