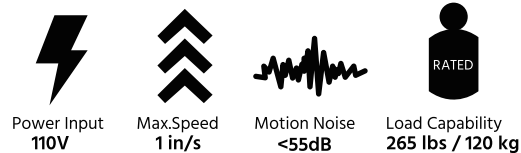


Workstream by Monoprice Triple Motor Height Adjustable Sit-Stand Corner Desk Frame, 3-Leg Corner Table Base

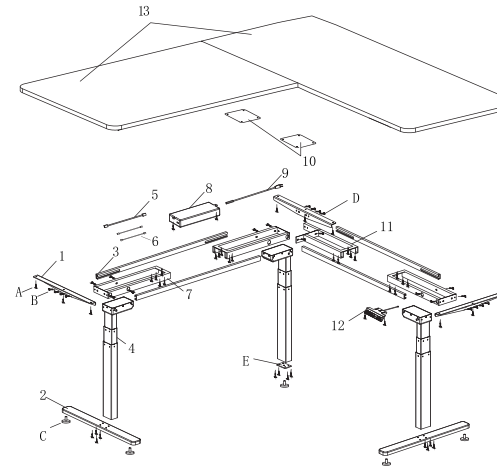
P/N 34827, 34828, 34829



SCREWS/FASTENERS (BAG)

A	M5×16 screws (2pcs extra)		30pcs
B	M6×12 screws (2pcs extra)		48pcs
C	Foot pads		5pcs
D	M6×35 screws		6pcs
E	Connection plate		1pc
F	S=4mm		1pc

PARTS INCLUDED

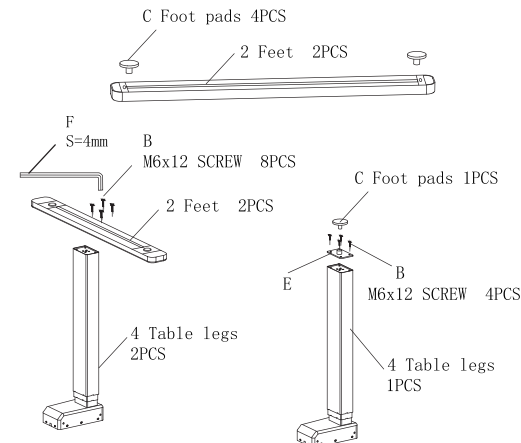


Desk Parts

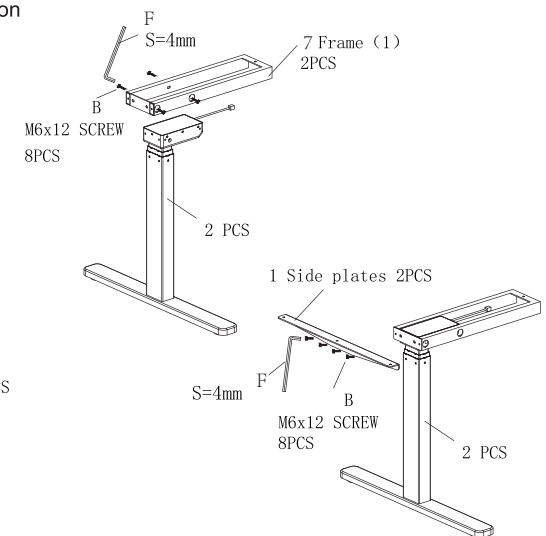
1.	Side plates		3pcs
2.	Feet		2pcs
3.	Connecting rods		4pcs
4.	Table legs		3pcs
5.	Connection line (long)		1pc
6.	Connection line (short)		2pcs
7.	Frames 1		3pcs
8.	Controller box		1pc
9.	Power cord		1pc
10.	Table board connection board		2pcs
11.	Frames 2		1pc
12.	Control Panel		1pc
13.	Desktop (not included)		2pcs

INSTALLATION

- Attach the adjusting foot(C) to the feet (2) , connect the table leg (4) to the feet (2), and fasten the screw (B) with the wrench (F). Screw the adjustment foot(C) onto the Connection plate(E) . Place the Connection plate(E) on the table leg 2 and tighten it with the screw (B).

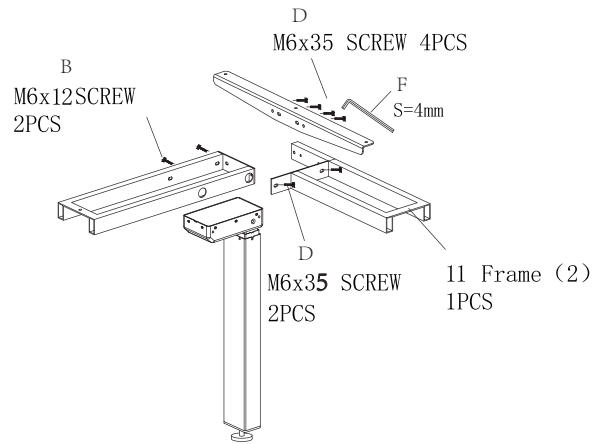


- Mount the frame 1 (7) and use the wrench (F) to lock the screw (B), fix the side panel (1) to the frame (7) with the screw (B).

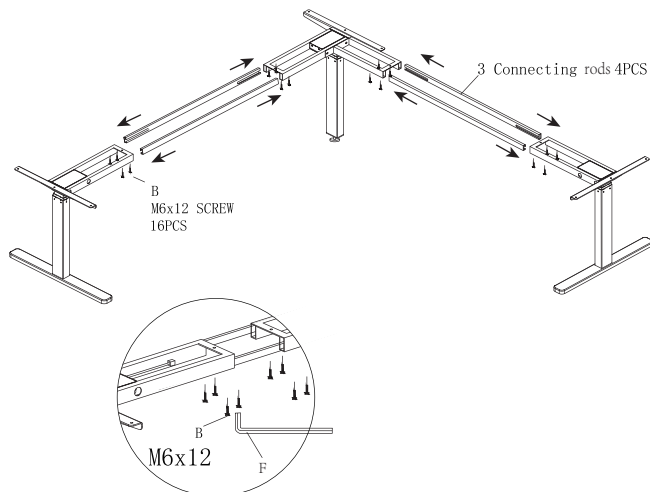


INSTALLATION

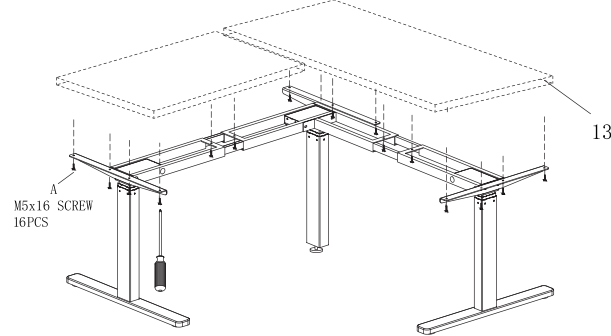
- ③ Fix the frame 1 (7) with screws (B)
Fix the frame 2 (11) with screws (D)
Secure the side plate (1) with screws (D)



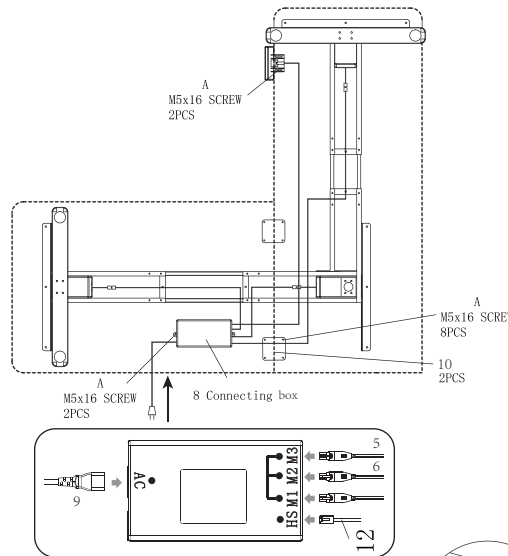
- ④ Insert the connecting rod (3) into the frame
Adjust the distance according to the size of the table,
and then tighten the screw (B) with the wrench (F).



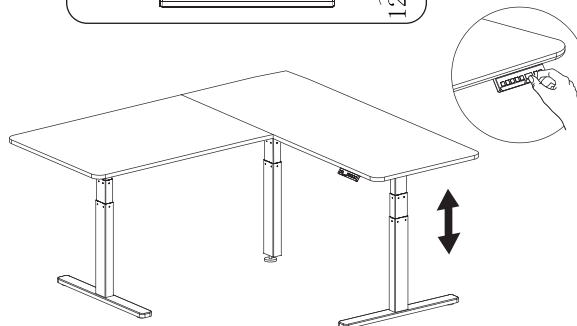
- ⑤ Mount the desktop (not Included) with screws (A) on the two side plates.



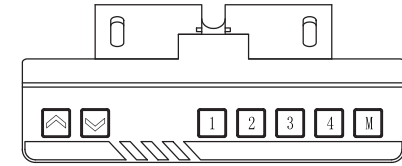
- ⑥ Mount the control box (8) under desktop(13) with screws (A).
Use the screws (A) to install the controller panel(12) under the desktop. If using two separate table boards, connect and support them with the table connection hardware (10).



⑦



OPERATION



	Press and display real height
	Press and display real height
	Press until 1 appears, release the button, it runs to corresponding height and displays current position.
	Press until 2 appears, release the button, it runs to corresponding height and displays current position.
	Press until 3 appears, release the button, it runs to corresponding height and displays current position.
	Press until 4 appears, release the button, it runs to corresponding height and displays current position.
	Save button, used to enter the save height function
Memory Position	Set to desired height. Press to set memory position. Indicator flashes, press the preset number [1-4] to save.
Reset	If an error code occurs, press for 5 seconds until "RES" is displayed and the desk goes down to the lowest setting.

Protection mode (auto lock screen mode)	
Over-heating protection	Hot: if the desk continuously works for over 2 minutes. Clears automatically after an 18 minute cool down period.
Sensorless alarm	E1: motor setting not detected, reset or unplug to clear error.
Overload protection	E2: Check for obstructions or overloading, error clears automatically after 3 seconds.
Rebound protection	E02: it alarms in reversed compression when running down, check that there are no obstructions. press any button to clear or reset.
Overvoltage alarm	E03: it alarms when voltage is higher than limit value, clear automatically after voltage reduced to set value.
Undervoltage alarm	E05: it alarms when voltage is lower than limit value; clear automatically after voltage is higher than set value.
Step out alarm	E06: it alarms when height difference between left and right leg exceeds the set value; clear it after re-power on.
Breaking protection	Desk enters protection state when motor or control wires are disconnected. Reconnect to restore operation.
Metric and English unit conversion	Press for 3 seconds and it will display ---, release , press until 0 appears, release the button and it displays current height. (cm)
	Press for 3 seconds and it will display ---, release , press until 1 appears, release the button and it displays current height. (in)