

# MONOPRICE® RS232 EXTENDER



(Local)



(Remote)

(RS232-E)

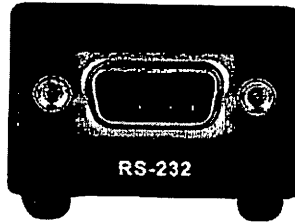
## Features

- Compatible with all RS-232 protocols.
- Full-duplex data communication.
- Sends RS-232 data at 230 kbps up to 1000M / 3300 ft.
- Pure hardware solution - real time data transfer, no software conflicts.
- No external power required.
- Transfer data or files between PCs, equipments.
- One CAT-5 cable extension.

## Specifications

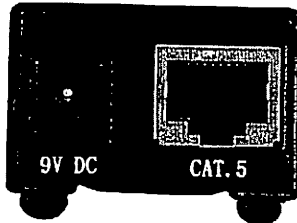
Function	RS232-L	RS232-R
RS232 Connector	DB-9 Female x1	
RJ-45 Connector	1	
Cable Distance (Max.)	1000M / 3300ft (UTP)	
Communication mode	Full-duplex data	
Power Supply	DC9V/300mA (Min.) spare	
Housing	Metal	
Weight	65 g	
Dimensions (LxWxH) mm	92x34x22	

### FRONT VIEW



1. RS232 (DB-9 Female Connector)

### REAR VIEW



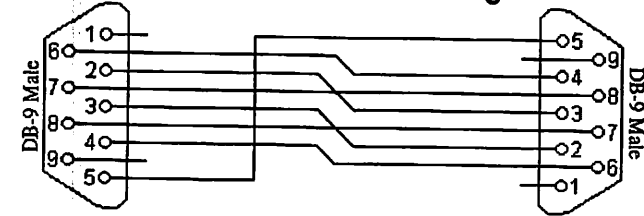
1. Power jack
2. CAT.5 (RJ-45 Connector)

## Technical Specifications

### Supported RS232 DCE Signals:

PIN	Signal
PIN1	N/A
PIN2	Transmit Data
PIN3	Received Data
PIN4	N/A
PIN5	Signal Ground
PIN6	N/A
PIN7	Clear To Send
PIN8	Request To Send
PIN9	N/A

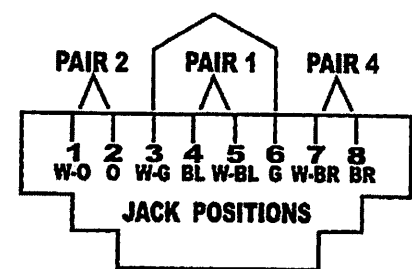
### Null modem with full handshaking:



### Wiring Information & Coding:

Conductor Identification	RJ45 Pin Assignment	Color Code for Conductor
Pair 1	5	White-Blue
	4	Blue
Pair 2	1	White-Orange
	2	Orange
Pair 3	3	White-Green
	6	Green
Pair 4	7	White-Brown
	8	Brown

### PAIR 3



## USER MANUAL

### Package Contents

- RS232 Extender Local Unit
  - RS232 Extender Remote Unit
  - 1 user manual
  - 2 power adapter DC 9V/300mA
  - 1 20cm Null Modem cable (DB-9 Male to Male)
- Any thing missed, please contact with your vendor.

## **Trouble shooting**

**Q:** When RS232-E does not work smoothly.

**A1:** Use power adapter of DC9V 300mA.

**A2:** Check the two Baud Rate setting of two ends, they have to accord.

**A3:** Refer above sheet and check if it connect RJ45 pair are correct.

### **Trademarks:**

All the companies, brand names, and product names referred to this manual are the trademarks or registered trademarks belonging to their respective companies.