



Maker Ultimate 2 3D Printer

P/N 36045

Quick Start Guide

INTRODUCTION

Thank you for purchasing this Maker Ultimate2 3D Printer! This printer uses the FFF (Fused Filament Fabrication) method of printing. It features a metal frame, fully enclosed structure, and heated build platform. It can print 1.75mm ABS, PLA, metal fill, wood fill, and other filament types with melting points below 250°C. It has a 200 x 150 x 150 mm print area and can print at speeds up to 150mm/sec. It can print from a computer using a USB connection or from sliced gcode files stored on a microSD™ card. It supports auto leveling, has a removable and a heated glass build plate.

CUSTOMER SERVICE

The Monoprice Customer Service department is dedicated to ensuring that your ordering, purchasing, and delivery experience is second to none. If you have any problem with your order, please give us an opportunity to make it right. You can contact a Monoprice Customer Service representative through the Live Chat link on our website www.monoprice.com or via email at support@monoprice.com. Check the website for support times and links.

PACKAGE CONTENTS

Please take an inventory of the package contents to ensure you have all the items listed below. If anything is missing or damaged, please contact Monoprice Customer Service for a replacement.

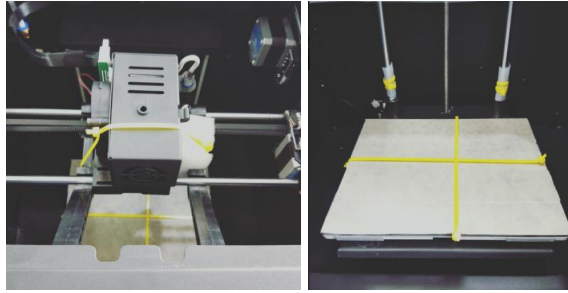
1x 3D printer	1x Set of Allen keys
1x 500g spool of PLA filament	1x Roll yellow tape
1x Filament holder	1x Spanner
1x 8GB microSD™ card	1x Stick of water washable glue
1x microSD™ card reader	1x US power cord
1x Metal scraper	1x UK power cord
1x USB cable	1x EU power cord
1x Switch cable	5x User's manuals (English, Deutsche, Español, Français, Italiano)
1x Motor cable	

MENU OPERATION

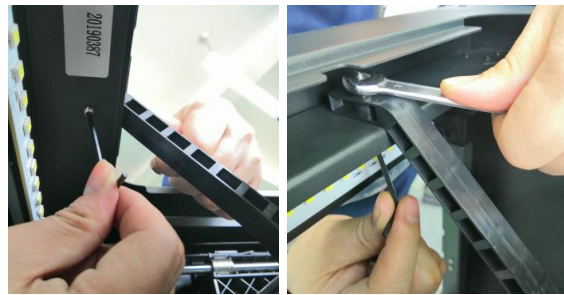
- The **Control Knob** to the right of the **LCD Display** is used to manipulate the menu.
- If on a menu or submenu, turn the **Control Knob** counterclockwise to move the menu highlight up or to the left.
- If on a menu or submenu, turn the **Control Knob** clockwise to move the menu highlight down or to the right.
- If on a menu or submenu, push the **Control Knob** to enter the highlighted submenu or to select the highlighted entry for editing.
- If editing a value, turn the **Control Knob** counterclockwise to decrease the value.
- If editing a value, turn the **Control Knob** clockwise to increase the value.
- If editing a value, push the **Control Knob** to save the displayed value and return to the previous menu or submenu.

GETTING STARTED

1. Open the box and remove the printer from the protective foam. Set it on a flat, stable surface, then remove the plastic film.
2. Use a pair of scissors or side cutters to remove the zip ties and silicon rubber sheets on the Z-axis.



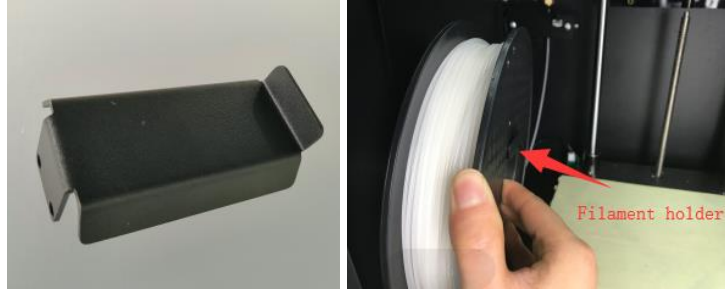
3. Use the included 2mm Allen wrench and the included spanner to remove the fixed support on the Z-axis.



4. Remove the microSD™ card from the accessory box and insert it in the card slot to the left of the display. Next, remove the included AC power cord, plug one end into the AC power socket on the left side of the printer, then plug the other end into a nearby AC power outlet.



- Remove the filament holder from the accessory box and install it inside the printer. Remove the spool of filament and hang it on the filament holder, then insert the end of the filament into the sensor until it comes out of the tube.



- Press the extruder handle, then insert filament into the hold to a depth of about 4cm.



- Open the **Control** menu, then choose the **Filament In** options. Wait for the filament to finish loading.



- Go back to the **Main** menu, then select the **Print from SD** option. Locate and select one of the gcode files on the microSD™ card to start your first print.

