



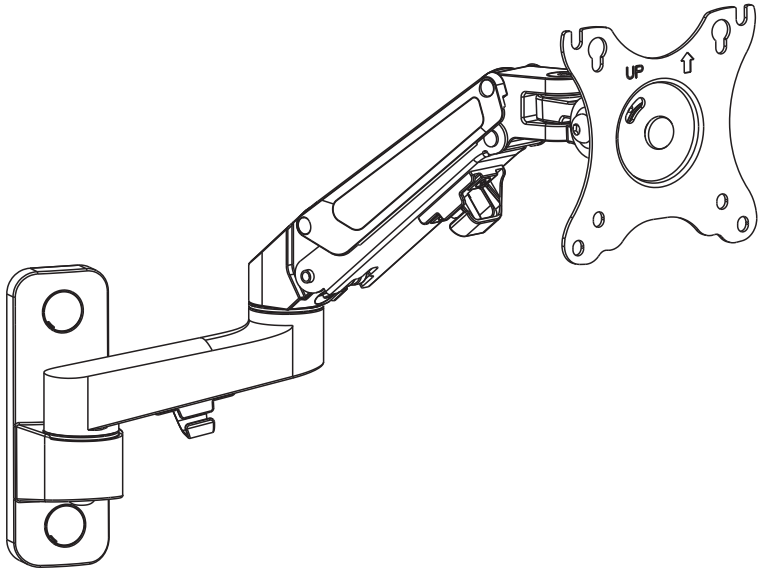
EN  Read the entire instruction manual before you start installation and assembly. If you have any questions regarding any of the instructions or warnings, please contact Monoprice customer support.

 **CAUTION:** Use with products heavier than the rated weights indicated may result in instability causing possible injury.

- Mounts must be attached as specified in assembly instructions. Improper installation may result in damage or serious personal injury.
- Use proper tools and follow assembly instructions. This product should only be installed following this manual.
- Make sure that the supporting surface **will safely** support the combined weight of the equipment and **all** attached hardware and components.
- Use the mounting screws provided and **DO NOT OVER TIGHTEN** mounting screws.
- This product contains small items that could be a choking hazard if swallowed. Keep these items away from children.
- This product is intended for indoor use only. Using this product outdoors could lead to product failure and personal injury.

**IMPORTANT:** Ensure that you have received all parts according to the component checklist prior to installation. If any parts are missing or damaged, contact Monoprice customer support.

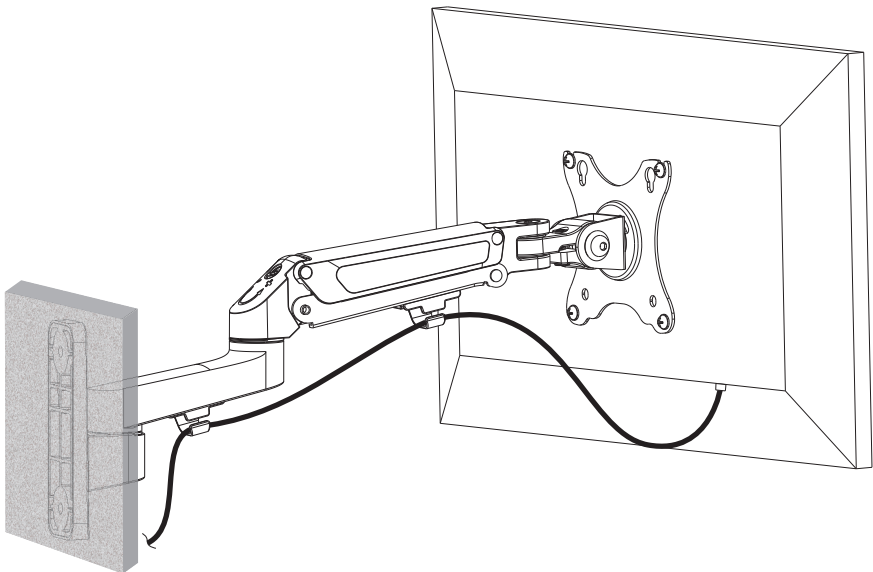
**MAINTENANCE:** Check that the bracket is secure and safe to use at regular intervals (at least every three months).



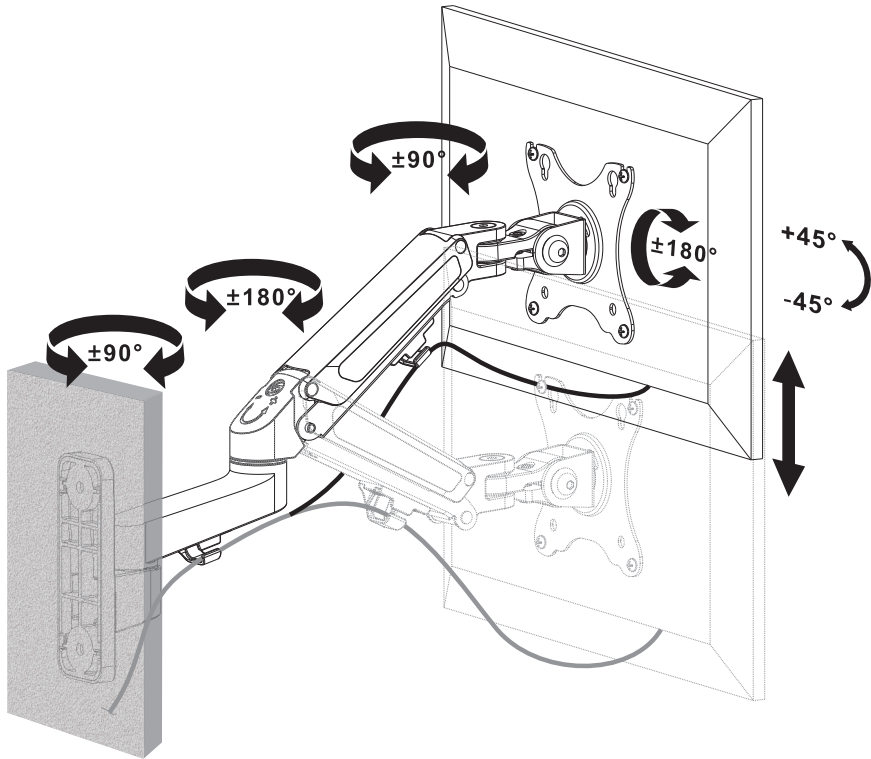
*Adjustable Gas Spring 2-Segment Wall  
Mount for Monitors Up To 27"*

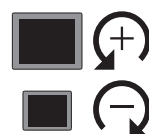
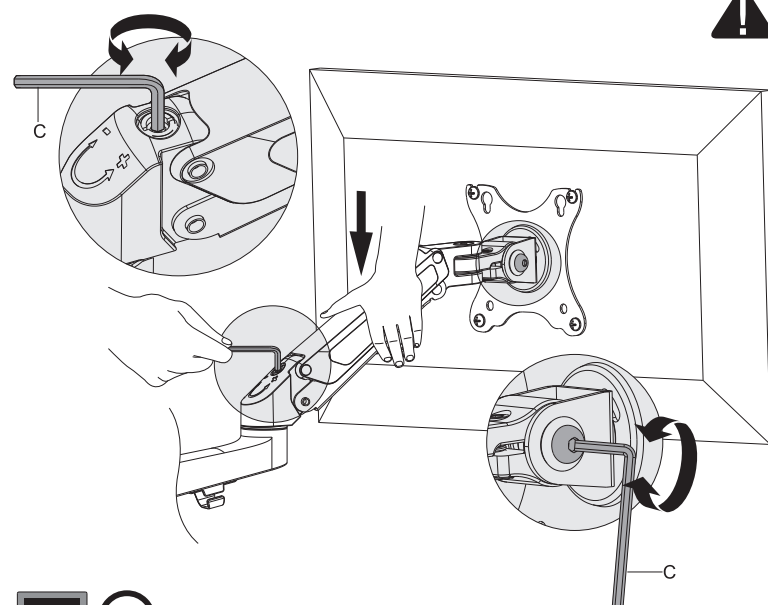
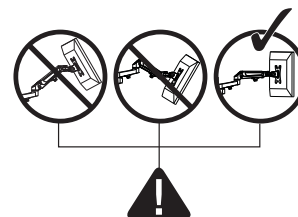
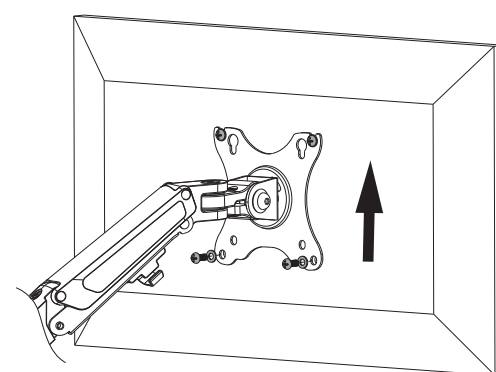
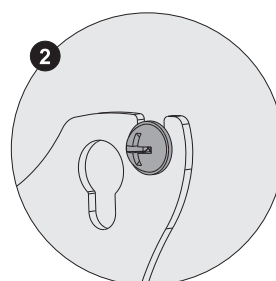
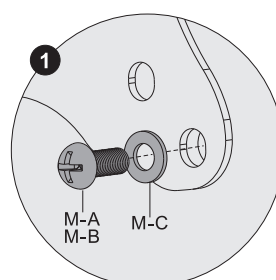
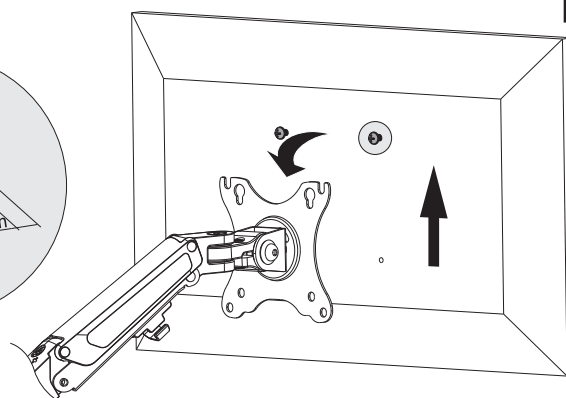
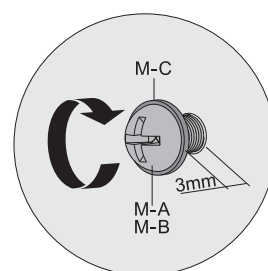
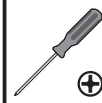
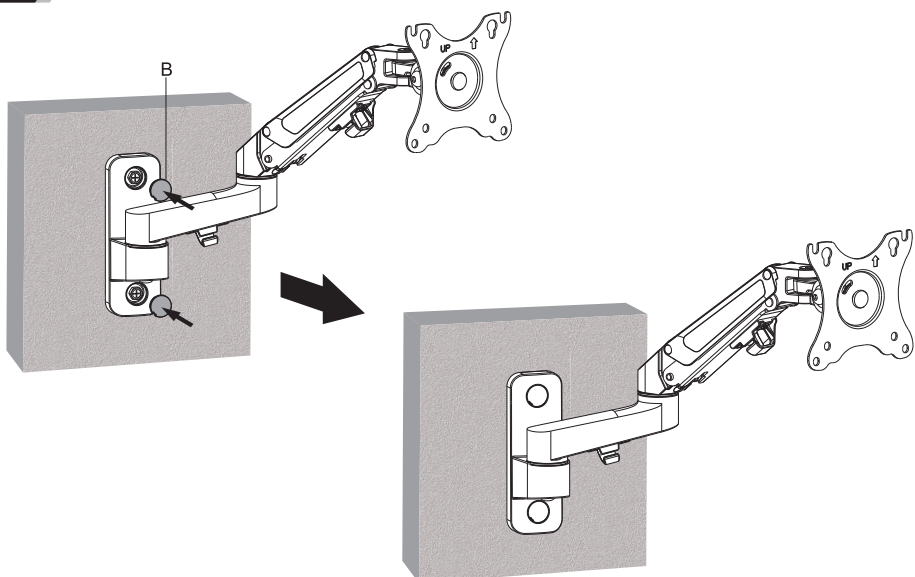
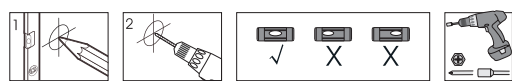
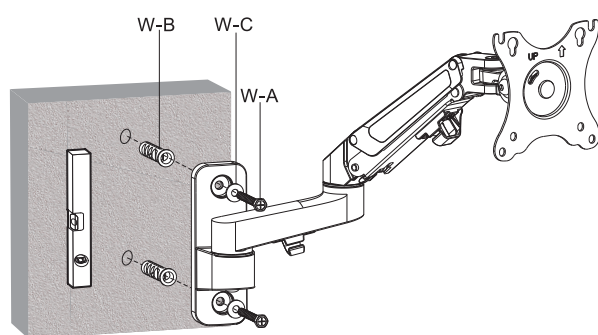
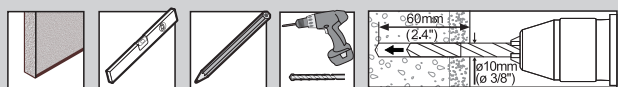
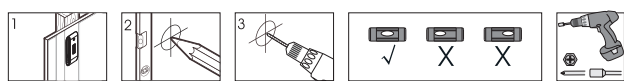
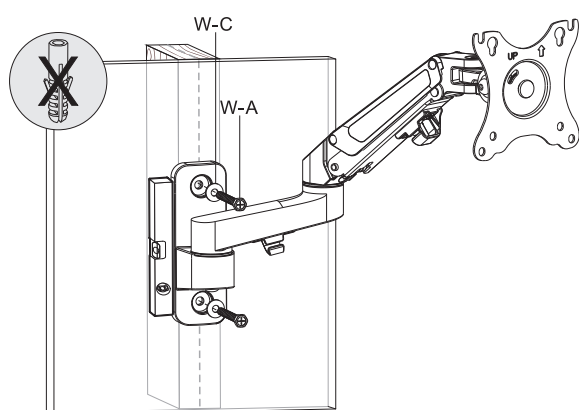
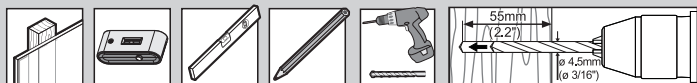
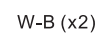
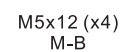
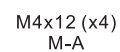
*P/N 36082  
Installation Guide*

5



6





## Adjusting the Gas Spring Force