



MP Cadet 3D Printer



P/N 40108

User's Manual

CONTENTS

SAFETY WARNINGS AND GUIDELINES.....	4
CUSTOMER SERVICE.....	5
PACKAGE CONTENTS.....	6
PRODUCT OVERVIEW.....	6
GETTING STARTED.....	7
OSD MENU MAP.....	10
BASIC MENU CONTROL.....	11
OSD MENU SYSTEM.....	11
Welcome/Info Screen.....	11
Main Menu.....	11
Prepare Menu.....	11
Control Menu.....	12
Wi-Fi Network Menu.....	12
Move Axis Menu.....	13
Move X/Y/Z/Extruder Menu.....	13
Print Control Menu.....	13
Tune Menu.....	14
Power Loss Recovery Menu.....	15
COMMON MENU OPERATIONS.....	15
Print from SD.....	15
Loading Filament.....	16
Unloading Filament.....	17
Changing Filament.....	17
Auto Home.....	17
Move Axis.....	18
Level Bed.....	19

Disable Steppers.....	19
Adjusting Target Temperature.....	20
Z Offset Setting.....	20
Connect to Wi-Fi®.....	21
Show Wi-Fi® IP.....	24
Wi-Fi Device/Machine Info	25
Firmware Update.....	25
Changing Parameters While Printing.....	26
Pausing and Resuming Print.....	26
Changing Filament While Printing.....	27
Saving a Print	28
Continuing a Print After Power Loss.....	29
Canceling a Print in Progress	29
Printing with the App.....	30
WIIBUILDER SLICING SOFTWARE	31
Installation.....	31
TECHNICAL SUPPORT	35
SPECIFICATIONS.....	36
REGULATORY COMPLIANCE.....	37
Notice for FCC.....	37
Radio Notice for FCC.....	38
RF Exposure Statement for FCC	38
Notice for Industry Canada.....	38
Radio Notice for Industry Canada.....	39
RF Exposure Statement for Industry Canada	39

SAFETY WARNINGS AND GUIDELINES

Please read this entire manual before using this device, paying extra attention to these safety warnings and guidelines. Please keep this manual in a safe place for future reference.

- This device is intended for indoor use only.
- Do not expose this device to water or moisture of any kind. Do not place drinks or other containers with moisture on or near the device. If moisture does get in or on the device, immediately unplug it from the power outlet and allow it to fully dry before reapplying power.
- Do not touch the device, the power cord, or any other connected cables with wet hands.
- Do not expose this device to excessively high temperatures. Do not place it in, on, or near a heat source, such as a fireplace, stove, radiator, etc. Do not leave it in direct sunlight.
- Use only in a well-ventilated area. Do not use in close, confined spaces.
- Prior to operation, check the unit and power cord for physical damage. Do not use if physical damage has occurred.
- Before plugging the unit into a power outlet, ensure that the outlet provides the same type and level of power required by the device.
- Unplug this device from the power source when not in use.
- Take care to prevent damage to the power cord. Do not allow it to become crimped, pinched, walked on, or become tangled with other cords. Ensure that the power cord does not present a tripping hazard.
- Never unplug the unit by pulling on the power cord. Always grasp the connector head or adapter body.
- Clean using a soft, dry cloth only. Do not use chemical cleaners, solvents, or detergents. For stubborn deposits, moisten the cloth with warm water.
- This device has no user serviceable parts. Do not attempt to open, service, or modify this device.

- Take care to avoid touching hot parts, including heat blocks, extruder nozzle, and extruded filament.
- Do not wear gloves when operating or repairing to avoid entanglement.
- Keep the printer and all accessories out of reach of children.
- Do not reach inside the printer during operation.
- Always allow the printer and extruded filament to cool before reaching inside.
- Ensure that the printer is turned off and unplugged from its power source before making repairs or performing service.
- Do not install this printer on an unstable surface where it could fall and cause either personal injury or damage to the device and/or other equipment.
- Do not subject the printer to extreme force, shock, or fluctuations in temperature or humidity.

CUSTOMER SERVICE

The Monoprice Customer Service department is dedicated to ensuring that your ordering, purchasing, and delivery experience is second to none. If you have any problem with your order, please give us an opportunity to make it right. You can contact a Monoprice Customer Service representative through the Live Chat link on our website www.monoprice.com or via email at support@monoprice.com. Check the website for support times and links.

PACKAGE CONTENTS

Please take an inventory of the package contents to ensure you have all the items listed below. If anything is missing or damaged, please contact Monoprice Customer Service for a replacement.

1x 3D Printer

1x Package of Filament

1x AC Power Adapter

1x AC Power Cord

1x USB Cable

1x microSD™ Card

1x microSD Card Reader

1x Platform Sticker

1x Stick of Glue

1x 1.5mm Hex Wrench

1x 2.0mm Hex Wrench

1x 2.5mm Hex Wrench

1x Phillips Screwdriver

1x M6 Brass Nozzle

1x 8mm Wrench

1x Quick Start Guide

PRODUCT OVERVIEW



GETTING STARTED

1. Remove the printer and Accessory Box from the packaging. Remove the foam and plastic from the printer and place it on a table or desk.
2. Open the **Accessory Box** and verify that you have all the parts listed below:

2x Stickers, 1x 1.5mm Hex Wrench, 1x 2.0mm Hex Wrench

1x 2.5mm Hex Wrench, 1x Phillips Screwdriver, 1x 8mm Wrench

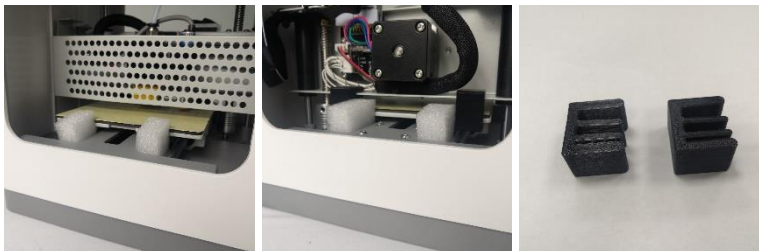
1x M6 Brass Nozzle, 1x MicroSD™ Card, 1x MicroSD Card Reader

1x USB Cable, 1x AC Power Adapter, 1x AC Power Cord

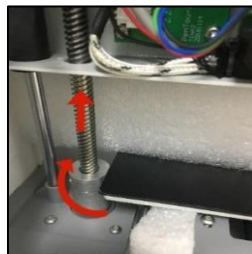
1x Stick of Glue, 1x Package Sample Filament, 1x Quick Start Guide



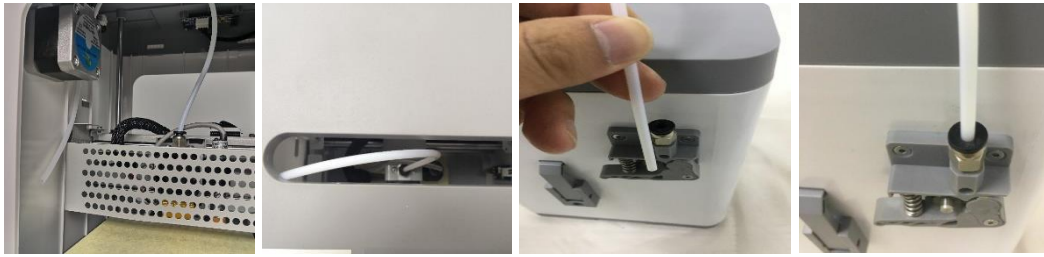
3. Remove the two foam blocks on the **Magnetic Print Bed** from the front of the printer, then remove the two black fixing clips and two foam blocks from the back of the printer.



4. Rotate the **Coupling Screw** clockwise to lift the **Magnetic Print Bed**, then remove the foam block from under the print bed.



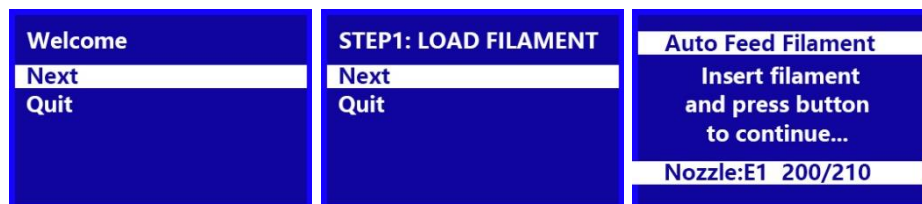
5. Insert the **Filament Guide Tube** into the black pneumatic connector on top of the **Extruder**.



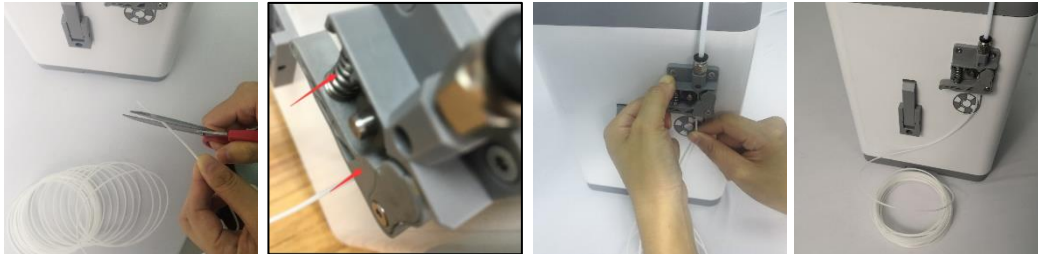
6. Ensure that the power switch on the inline control on the **AC Power Adapter** is in the OFF position (**O**). Plug the DC barrel connector on the **AC Power Adapter** into the **Power Port** on the right side of the printer. Plug the included **AC Power Cord** into the **AC Power Adapter**, then plug the other end into a nearby AC power outlet.



7. Flip the power switch on the inline control to the ON position (**I**). After the printer finishes booting, you will see the following wizard. Depress the **Knob** on top of the printer to select **Next** on the **Welcome Screen**, then again to select **Next** on the **STEP 1: LOAD FILAMENT Screen**.



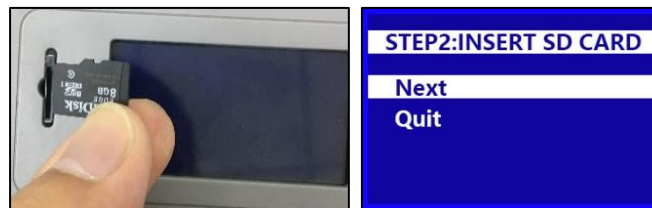
8. Using a pair of scissors or side cutters, cut about an inch off the end of the filament, then gently straighten the end of the filament. Squeeze the lever on the **Extruder**, insert the filament into the bottom until you encounter resistance, then release the lever.



9. Press the **Knob** to start loading filament. Once filament starts extruding from the **Nozzle**, press the **Knob** again to stop extrusion, then press the **Knob** to select the **Continue** option.



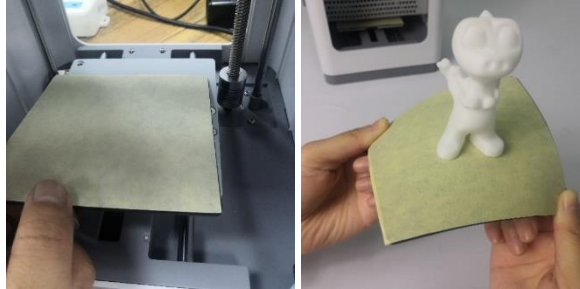
10. Remove the included microSD™ card from the **Accessory Box**, then insert it into the microSD card slot to the left of the **LCD Screen**. Press the **Knob** to select **Next** on the wizard.



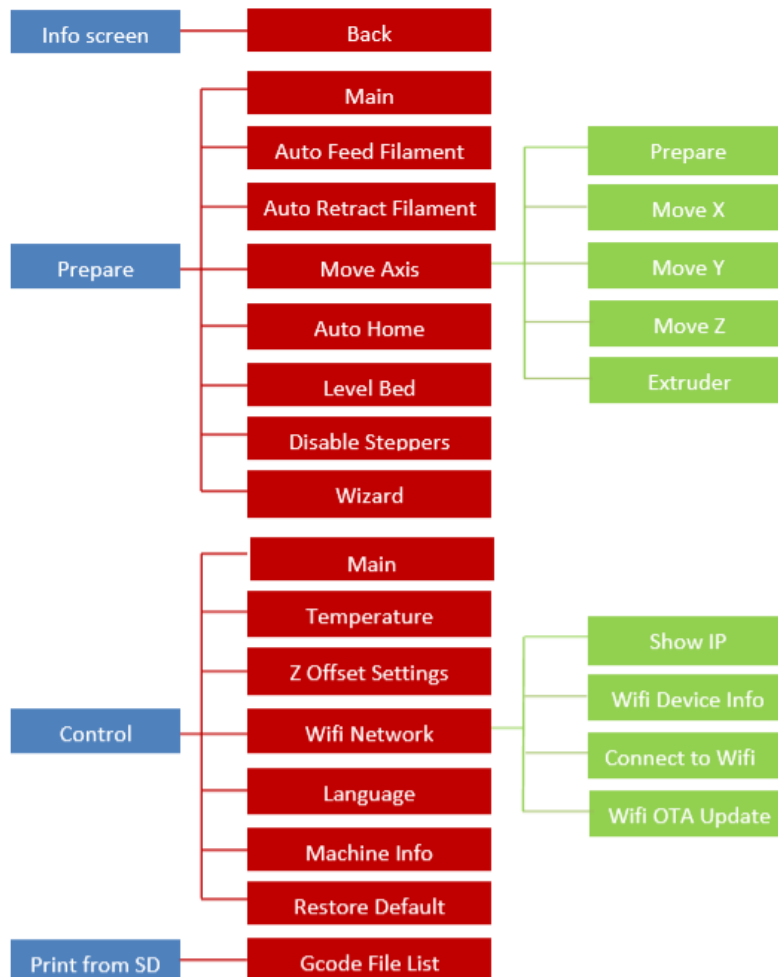
11. Press the **Knob** to select **Print From SD**. Rotate the **Knob** to highlight a .gcode file on the microSD card, then press the **Knob** to begin printing the highlighted model.



12. Once the print is finished, remove the **Magnetic Print Bed** from the metal print platform, then bend it to remove the model. Replace the **Magnetic Print Bed** on the metal print platform.



OSD MENU MAP



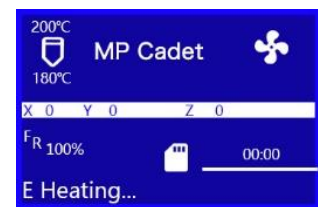
BASIC MENU CONTROL

- Rotate the **Knob** clockwise to move the highlight down on the menus or to decrease a value.
- Rotate the **Knob** counterclockwise to move the highlight up on the menus or to increase a value.
- Press the **Knob** to enter the highlighted menu, select the highlighted option, or accept the edited value.

OSD MENU SYSTEM

Welcome/Info Screen

- After the MP Cadet starts up, the **Welcome/Info Screen** is displayed. Press the **Knob** to continue to the **Main Menu**.



Main Menu

- **Info Screen:** Displays the **Welcome/Info Screen**.
- **Prepare:** Displays the **Prepare Menu**.
- **Control:** Displays the **Control Menu**.
- **Print From SD:** Displays the **File Selection Screen**.



Prepare Menu

- **Main:** Returns to the **Main Menu**.
- **Auto Feed Filament:** Starts the **Loading Filament** process.
- **Auto Retract Filament:** Starts the **Unloading Filament** process.
- **Move Axis:** Displays the **Move Axis Menu**.



- **Auto Home:** Moves the Extruder and the X, Y, and Z axes to their "home" positions.
- **Level Bed:** Levels the **Print Bed**.
- **Disable Steppers:** Disables the Stepper Motors. To re-engage the motors, turn the printer off, then back on again.
- **Wizard:** Starts the Initial Setup Wizard.



Control Menu

- **Main:** Returns to the **Main Menu**.
- **Temperature:** Displays the **Adjust Temperature Screen**.
- **Z Offset Setting:** Tests the current distance between the **Nozzle** and the **Print Bed**, then displays the **Adjust Z Offset Screen**.
- **Wi-Fi Network:** Displays the **Wi®-Fi Network Menu**.
- **Language:** Displays the **Language Select Screen**. The available languages are English, Chinese, French, German, Spanish, Italian, Japanese, Portuguese, Dutch, Turkish, and Korean.
- **Machine Info:** Displays the **Machine Info Screen**.
- **Restore Default:** Restores the printer's settings to their factory default values. Normally, this will not be needed, but should be done after performing a firmware update.



Wi-Fi Network Menu

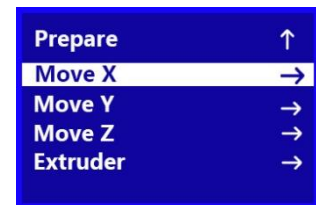
- **Control:** Returns to the **Control Menu**.
- **Show IP:** Displays the IP address.
- **Wi-Fi Device Info:** Displays the Wi-Fi® module name, Wi-Fi module firmware version number, and IP address.



- **Connect to Wi-Fi:** Displays the **Connect to Wi-Fi Screen**.
- **Wi-Fi OTA Update:** Checks the internet for the existence of a firmware update and performs the update if one is found.

Move Axis Menu

- **Prepare:** Returns to the **Prepare Menu**.
- **Move X:** Displays the **Move X Menu**.
- **Move Y:** Displays the **Move Y Menu**.
- **Move Z:** Displays the **Move Z Menu**.
- **Extruder:** Displays the **Move Extruder Menu**.



Move X/Y/Z/Extruder Menu

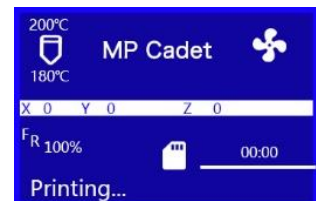
- **Move Axis:** Returns to the **Move Axis Menu**.
- **Move 10mm:** Displays the **Move Screen**, which allows you to adjust the X/Y/Z/Extruder position by 10mm each time the **Knob** is turned.
- **Move 1mm:** Displays the **Move Screen**, which allows you to adjust the X/Y/Z/Extruder position by 1mm each time the **Knob** is turned.
- **Move 0.1mm:** Displays the **Move Screen**, which allows you to adjust the X/Y/Z/Extruder position by 0.1mm each time the **Knob** is turned.



Print Control Menu

While printing is in progress, press the **Knob** while on the **Printing... Screen** to display the **Print Control Menu**.

- **Info Screen:** Returns to the **Printing... Screen**.
- **Tune:** Displays the **Tune Menu**.



- **Pause Print:** Pauses the print and displays an alternate **Print Control Menu**, which allows you to resume the print and change the filament.
- **Resume Print:** Resumes the paused print.
- **Saving Print and Off:** Saves the state of the print, so you can turn the printer off. The next time the printer is powered on, it will display the **Power Loss Recovery Menu**.
- **Auto Feed Filament:** Performs the **Loading Filament** function.
- **Auto Retract Filament:** Performs the **Unloading Filament** function. This allows you to change the filament in the middle of a print.
- **Stop Print:** Cancels the print in progress without saving its state.



Tune Menu

While printing is in progress, you can access the **Tune Menu** to make adjustments.

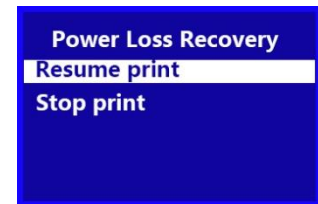
- **Main:** Returns to the **Main Menu**.
- **Speed:** Displays the **Adjust Print Speed Screen**, which allows you to change the printing speed on the fly.
- **Nozzle:** Displays the **Adjust Temperature Screen**, which allows you to change the **Nozzle** temperature on the fly.
- **Fan Speed:** Displays the **Adjust Fan Speed Screen**, which allows you to adjust the cooling fan speed on the fly.
- **Flow:** Displays the **Adjust Flow Screen**, which allows you change the speed at which filament is extruded on the fly. Note that reducing the speed too much can cause clogs in the **Nozzle**.
- **Z Offset Setting:** Displays the **Z Offset Setting Screen**, which allows you to adjust the Z offset on the fly.



Power Loss Recovery Menu

If power is lost during printing or if you previously selected the **Saving Print and Off** function from the **Print Control Menu**, the next time to turn the printer on, the **Power Loss Recovery Menu** is displayed, which allows you to continue the print from where it left off.

- **Resume Print:** Resumes the saved print.
- **Stop Print:** Cancels the saved print.



COMMON MENU OPERATIONS

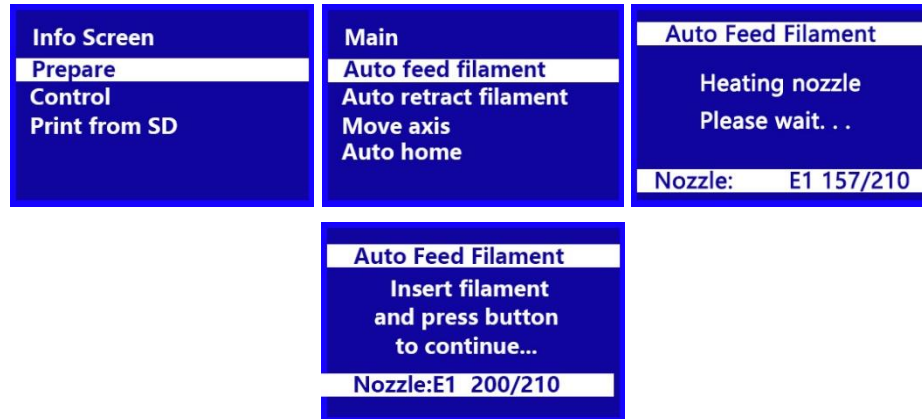
Print from SD



1. On the **Main Menu**, rotate the **Knob** until the **Print From SD** option is highlighted, then press the **Knob** to enter the **File Selection** screen.
2. The **File Selection** screen shows all the .gcode files on the microSD™ card, sorted with the newest file at the top. Rotate the **Knob** to highlight the file you want to print, then press the **Knob** to start printing the file.

Note that files stored on the microSD card are limited to 20 characters, not counting the .gcode file extension.

Loading Filament



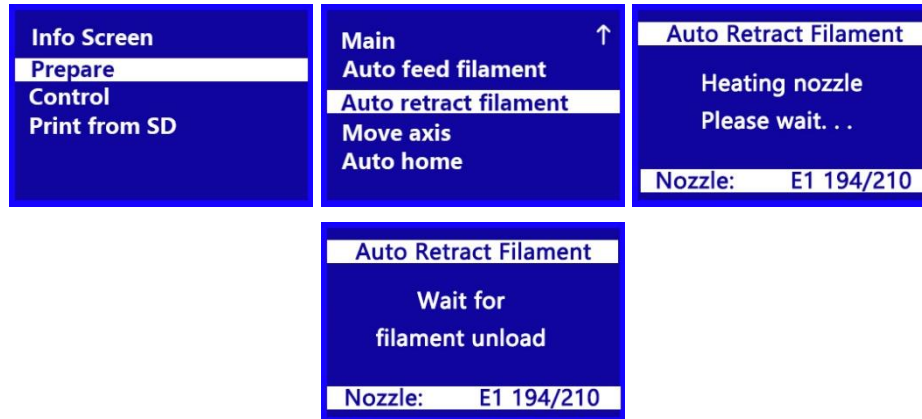
1. On the **Main Menu**, rotate the **Knob** until the **Prepare** option is highlighted, then press the **Knob** to enter the **Prepare Menu**.
2. Rotate the **Knob** until the **Auto Feed Filament** option is highlight, then press the **Knob** to continue.
3. Using a pair of scissors or side cutters, cut about an inch off the end of the filament, then gently straighten the end of the filament. Squeeze the lever on the **Extruder**, insert the filament into the bottom until you encounter resistance, then release the lever.



4. Press the **Knob** to start loading filament. Once filament starts extruding from the **Nozzle**, press the **Knob** again to stop extrusion. Clean the extruded filament, then press the **Knob** to select the **Continue** option.



Unloading Filament



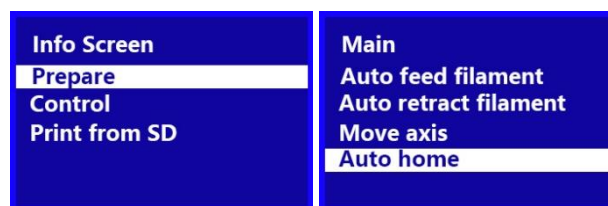
On the **Main Menu**, rotate the **Knob** until the **Auto Retract Filament** option is highlighted, then press the **Knob**. The **Nozzle** will heat to the target temperature. Once the target temperature is reached, the **Extruder** motor will retract the existing filament.

Changing Filament

1. Perform the steps in the *Unloading Filament* section above.
2. Remove the filament spool from the **Filament Holder**, then place the new spool on the **Filament Holder**.
3. Perform the steps in the *Loading Filament* section above.

Auto Home

The **Auto Home** function moves the **Nozzle** and **Print Bed** to the "home" positions.



1. On the **Main Menu**, rotate the **Knob** until the **Prepare** option is highlighted, then press the **Knob** to enter the **Prepare Menu**.
2. Rotate the **Knob** until the **Auto Home** option is highlighted, then press the **Knob**. The **Nozzle** and **Print Bed** will move to the "home" positions.

Move Axis

Info Screen Prepare Control Print from SD	Main Auto feed filament Auto retract filament Move axis Auto home	Prepare ↑ Move X → Move Y → Move Z → Extruder →
--	---	---

Move x Move axis ↑ Move 10mm → Move 1mm Move 0.1mm →	Move Y Move axis ↑ Move 10mm → Move 1mm Move 0.1mm →	Move Z Move axis ↑ Move 10mm → Move 1mm Move 0.1mm →	Move Extruder Move axis ↑ Move 10mm → Move 1mm Move 0.1mm →
--	--	--	---

1. Perform the steps in the *Auto Home* section above.
2. On the **Main Menu**, rotate the **Knob** until the **Prepare** option is highlighted, then press the **Knob** to enter the **Prepare Menu**.
3. Rotate the **Knob** until the **Move Axis** option is highlighted, then press the **Knob** to enter the **Move Axis Menu**.
4. Rotate the **Knob** until the **Move X**, **Move Y**, **Move Z**, or **Extruder** option is highlighted, then press the **Knob** to enter the **Move X**, **Move Y**, **Move Z**, or **Move Extruder Menu**.
5. Rotate the **Knob** until the **Move 10mm**, **Move 1mm**, or **Move 0.1mm** option is highlighted, then press the **Knob** to move the selected axis by the indicated amount.

Move X: +100.0	Move Y: +100.0	Move Z: +100.0	Move Z: +100.0
----------------	----------------	----------------	----------------

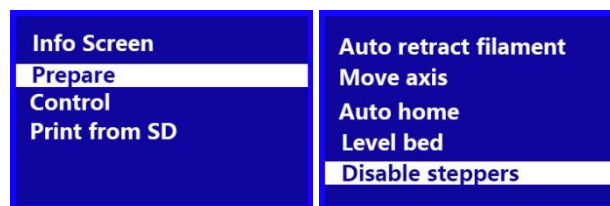
Level Bed

*IMPORTANT! Ensure that the **Magnetic Print Mat** is installed on the **Print Bed** before performing the **Level Bed** procedure. Performing a **Level Bed** function without the **Magnetic Print Mat** will produce an invalid result.*



1. On the **Main Menu**, rotate the **Knob** until the **Prepare** option is highlighted, then press the **Knob** to enter the **Prepare Menu**.
2. Rotate the **Knob** until the **Level Bed** option is highlighted, then press the **Knob** to begin the **Level Bed** procedure.

Disable Steppers



1. On the **Main Menu**, rotate the **Knob** until the **Prepare** option is highlighted, then press the **Knob** to enter the **Prepare Menu**.
2. Rotate the **Knob** until the **Disable Steppers** option is highlighted, then press the **Knob** to disable the **Stepper Motors**. The X, Y, and Z axes can now be independently moved by hand. To re-enable the **Stepper Motors**, turn the printer off, then turn it back on.

Adjusting Target Temperature

The **Target Temperature** is the temperature to which the printer will heat the **Nozzle**. By default, the **Target Temperature** is set to 210°C.

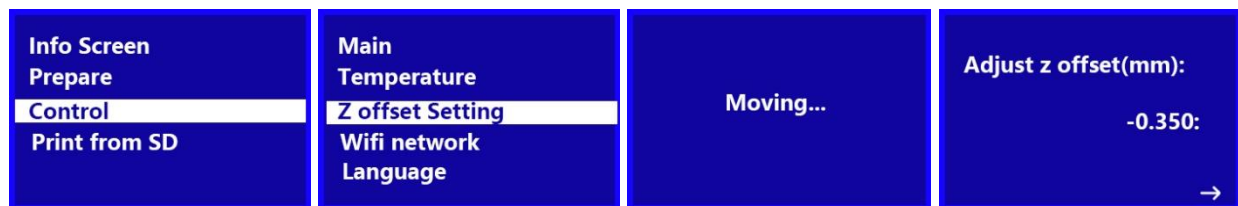


1. On the **Main Menu**, rotate the **Knob** until the **Control** option is highlighted, then press the **Knob** to enter the **Control Menu**.
2. Rotate the **Knob** until the **Temperature** option is highlighted, then press the **Knob** to enter the **Adjust Temperature Screen**.
3. Rotate the **Knob** until the **Nozzle** option is highlighted, then press the **Knob** to edit the value.
4. Rotate the **Knob** to change the **Target Temperature**, then press the **Knob** to save the value.

Z Offset Setting

The **Z Offset Setting** is used to adjust the distance between the **Nozzle** and the **Print Bed**. This can be done before printing or during printing. If the distance between the **Nozzle** and the **Print Bed** is too small, increase the **Z Offset**. If the distance between the **Nozzle** and the **Print Bed** is too large, decrease the **Z Offset**. The proper distance between the **Print Bed** and the **Nozzle** is when there is a slight amount of resistance when moving a piece of ordinary printer paper between the **Nozzle** and the **Print Bed**.

If you changed the **Z Offset** prior to printing, turn the printer off and then back on to save the setting as the default.



1. On the **Main Menu**, rotate the **Knob** until the **Control** option is highlighted, then press the **Knob** to enter the **Control Menu**.
2. Rotate the **Knob** until the **Z Offset Setting** option is highlighted, then press the **Knob**. The printer will test the distance from the **Nozzle** to the **Print Bed** in several places to determine the current Z offset. When it is done testing, the **Adjust Z Offset Screen** is displayed.
3. Place a sheet of ordinary printer paper between the **Nozzle** and the **Print Bed**. Rotate the **Knob** to adjust the Z offset until there is a slight amount of resistance when moving the paper around between the **Nozzle** and **Print Bed**.
4. When the proper Z offset is set, press the **Knob** to return to the **Control Menu**.

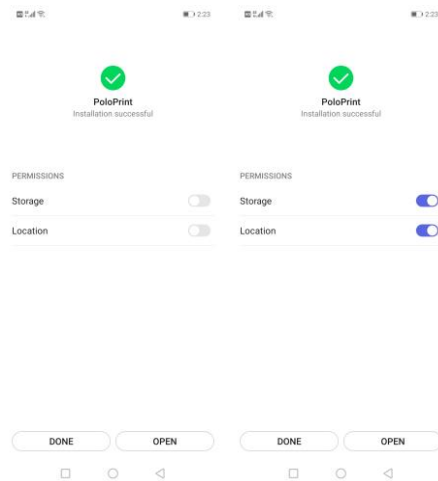
Connect to Wi-Fi®

Info Screen Prepare Control Print from SD	Main Temperature Z offset Setting Wifi network Language	Control Show ip Wifi Device Info Connect to wifi Wifi OTA Update	Connect to wifi Open the App Goto wifi setting Input wifi password 5G wifi not support
---	--	---	---

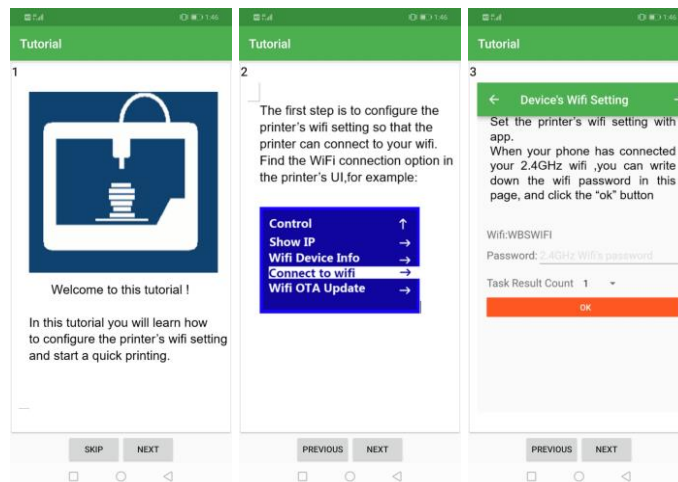
Note that the MP Cadet printer does not support 5G Wi-Fi® networks and cannot connect if there are already 10 or more Wi-Fi connections.

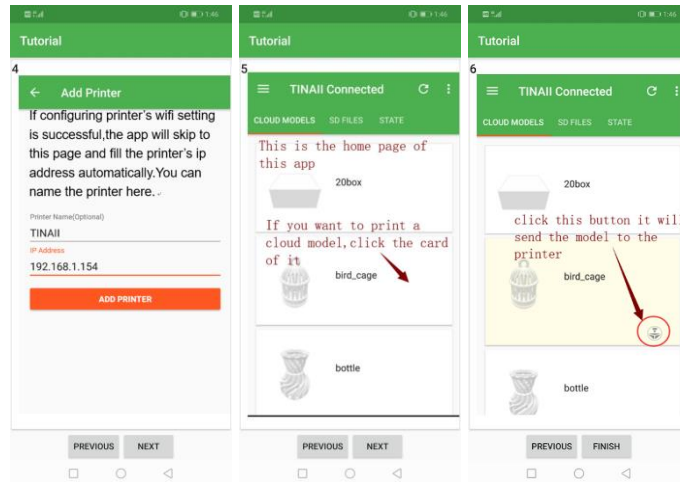
1. On the **Main Menu**, rotate the **Knob** until the **Control** option is highlighted, then press the **Knob** to enter the **Control Menu**.
2. Rotate the **Knob** until the **Wi-Fi Network** option is highlighted, then press the **Knob** to enter the **Wi-Fi® Network Menu**.
3. Rotate the **Knob** until the **Connect to Wi-Fi** option is highlighted, then press the **Knob** to display the **Connect to Wi-Fi Screen**.

- Download and install the PoloPrint app from the Google Play™ store. During installation, the app will ask for permissions to access Storage and Location information. Slide the controls to the right to allow access, then touch **DONE** to continue.

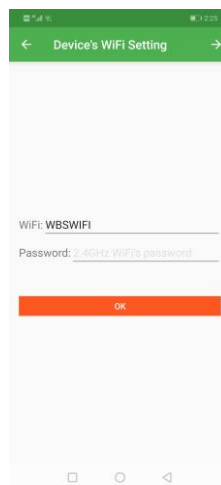


- Open the PoloPrint app on your mobile device. The app will display a wizard interface, which will introduce you to its features. Touch **Next** to go through the tutorial pages, then touch **Finish** on the last page.



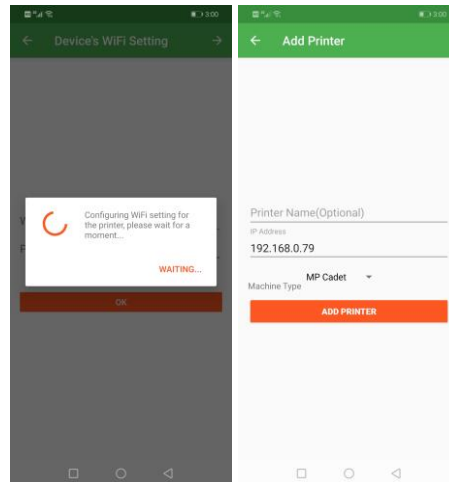


6. The wizard will now prompt you to input your Wi-Fi® network settings. Input your network's **Wi-Fi SSID** and **password**, but do not touch **OK** yet. Note that 5G networks are not supported.



7. Press the **Knob** on the printer. The printer will connect to your Wi-Fi network.
8. Once the connection has been successfully made, touch **OK** in the app.

- After configuring the Wi-Fi® connection, the wizard will now prompt you to input the printer's **name** (optional) and **IP address**. Use the **Machine Type** pull-down list box to select **MP Cadet**. Touch the **Add Printer** button to complete the process.



Show Wi-Fi® IP



- On the **Main Menu**, rotate the **Knob** until the **Control** option is highlighted, then press the **Knob** to enter the **Control Menu**.
- Rotate the **Knob** until the **Wi-Fi Network** option is highlighted, then press the **Knob** to enter the **Wi-Fi® Network Menu**.
- Rotate the **Knob** until the **Show IP** option is highlighted, then press the **Knob** to display the network IP address.
- Press the **Knob** to return to the **Wi-Fi Network Menu**.

Wi-Fi Device/Machine Info



1. On the **Main Menu**, rotate the **Knob** until the **Control** option is highlighted, then press the **Knob** to enter the **Control Menu**.
2. Rotate the **Knob** until the **Wi-Fi Network** option is highlighted, then press the **Knob** to enter the **Wi-Fi® Network Menu**.
3. Rotate the **Knob** until the **Wi-Fi Device Info** option is highlighted, then press the **Knob** to display the **Machine Info Screen**, which shows the Wi-Fi module name, Wi-Fi module firmware version number, and the IP address.
4. Press the **Knob** to return to the **Wi-Fi Network Menu**.

Firmware Update

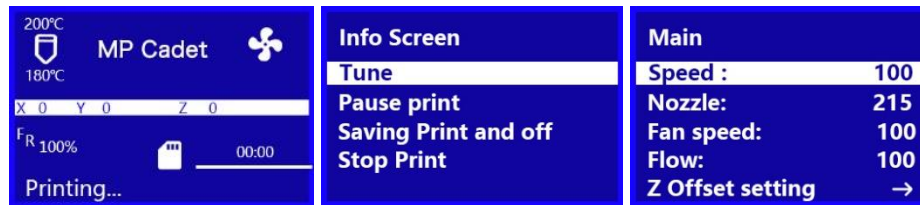
In the event that a firmware update is available, it will be made available on the internet. Perform the following steps to check for the existence of a firmware update and to perform the update, if one is available.



1. On the **Main Menu**, rotate the **Knob** until the **Control** option is highlighted, then press the **Knob** to enter the **Control Menu**.
2. Rotate the **Knob** until the **Wi-Fi Network** option is highlighted, then press the **Knob** to enter the **Wi-Fi® Network Menu**.
3. Rotate the **Knob** until the **Wi-Fi OTA Update** option is highlighted, then press the **Knob**. The **OTA Update Screen** will display. If new firmware has been found, press

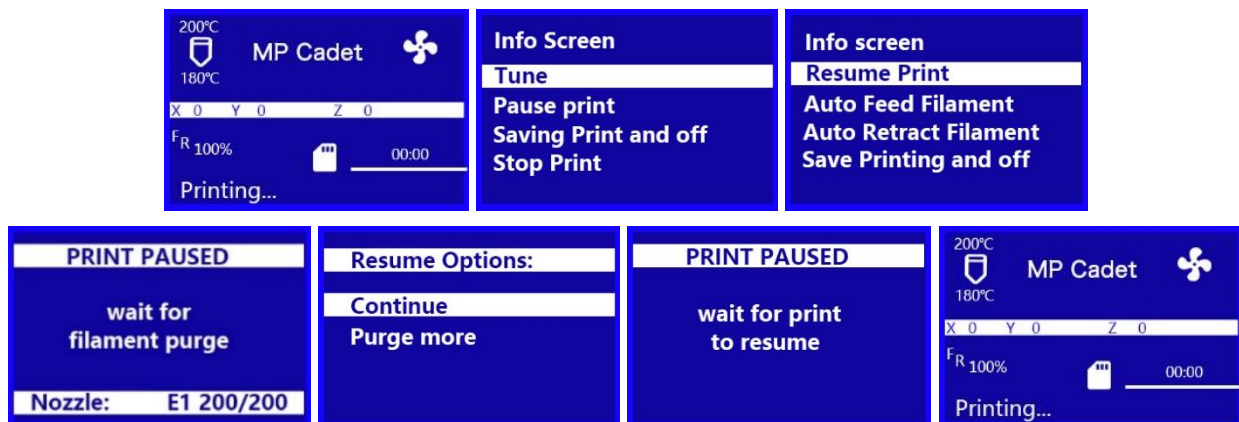
the **Knob** to begin updating the MP Cadet firmware. If no new firmware is available, press the **Knob** to return to the **Wi-Fi Network Menu**.

Changing Parameters While Printing



1. With the **Printing...** Screen displayed, press the **Knob** to display the **Print Control Menu**.
2. Rotate the **Knob** until the **Tune** option is highlighted, then press the **Knob** to display the **Tune Menu**.
3. Rotate the **Knob** until the parameter you want to adjust is highlighted, then press the **Knob** to displays that **Adjust Screen** for the selected parameter.
4. Change the value as desired, then select the **Tune** option to return to the **Tune Menu**.
5. Repeat for other parameters, as desired.

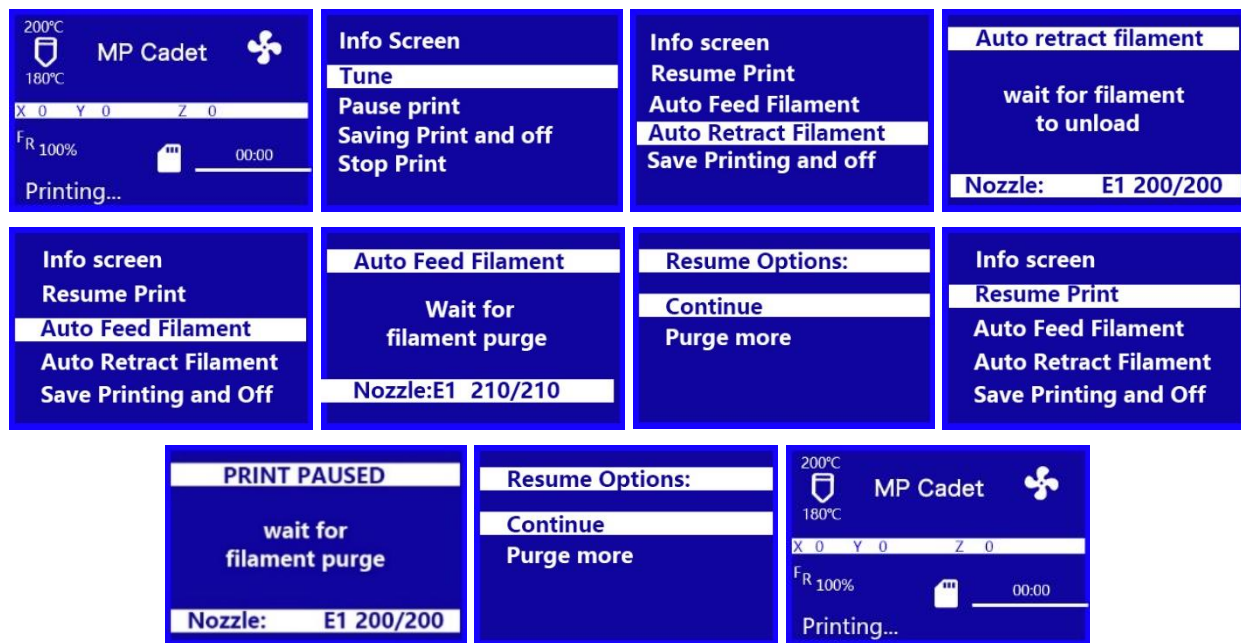
Pausing and Resuming Print



1. With the **Printing...** Screen displayed, press the **Knob** to display the **Print Control Menu**.

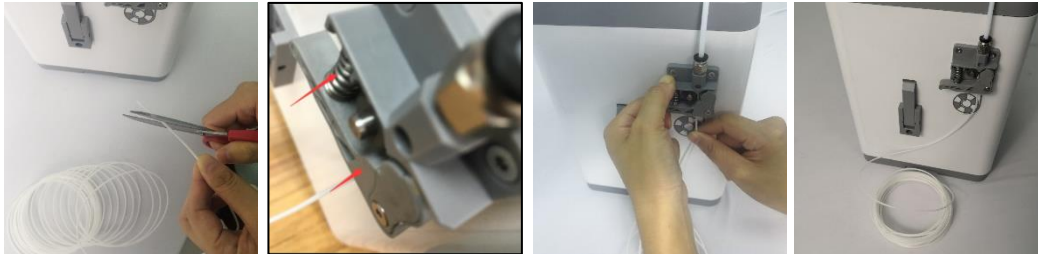
2. Rotate the **Knob** until the **Pause Print** option is highlighted, then press the **Knob** to pause the print. The printer will finish the current layer, then will pause printing.
3. When you are ready to resume the print, rotate the **Knob** until the **Resume Print** option is highlighted, then press the **Knob** to resume the print. The printer will heat the **Nozzle** to the target temperature, extrude a small amount of filament, then display the **Resume Options Menu**.
4. Clean the extruded filament, rotate the **Knob** until the **Continue** option is highlighted, then press the **Knob** to resume printing.

Changing Filament While Printing



1. With the **Printing...** Screen displayed, press the **Knob** to display the **Print Control Menu**.
2. Rotate the **Knob** until the **Pause Print** option is highlighted, then press the **Knob** to pause the print. The printer will finish the current layer, then will pause printing.
3. Rotate the **Knob** until the **Auto Retract Filament** option is highlighted, then press the **Knob** to start the **Unloading Filament** process.
5. Once the filament has been unloaded, replace the spool of filament on the **Filament Holder** with a new spool of filament.

- Using a pair of scissors or side cutters, cut about an inch off the end of the filament, then gently straighten the end of the filament. Squeeze the lever on the **Extruder**, insert the filament into the bottom until you encounter resistance, then release the lever.



- Rotate the **Knob** until the **Auto Feed Filament** option is highlighted, then press the **Knob** to start the **Loading Filament** function. The **Nozzle** will heat to the target temperature, if necessary, then will load the filament and extrude a small amount. Clean the extruded filament.
- Rotate the **Knob** until the **Continue** option is highlighted, then press the **Knob** to continue printing with the new filament.

Saving a Print



The MP Cadet printer features the ability save a print in progress, so that you can turn the printer off and resume printing at a later time. Perform the following steps to save and resume a print in progress.

- With the **Printing... Screen** displayed, press the **Knob** to display the **Print Control Menu**.

2. Rotate the **Knob** until the **Save Printing and Off** option is highlighted, then press the **Knob** to save the print.
3. Wait for printing to stop, then turn the printer off.
4. When you are ready to continue the print, turn the printer on. The **Power Loss Recovery Menu** will display.
5. Rotate the **Knob** until the **Resume Print** option is highlighted, then press the **Knob** to continue the print. The printer will heat the **Nozzle** to the target temperature, then will resume the print.

Continuing a Print After Power Loss



In the event that power is lost for any reason, the printer will remember where it was in the print process when power was lost. Perform the following steps to continue the interrupted print.

1. Turn the printer on. The **Power Loss Recovery Menu** will display.
2. Rotate the **Knob** until the **Resume Print** option is highlighted, then press the **Knob** to continue the print. The printer will heat the **Nozzle** to the target temperature, then will resume printing.

Canceling a Print in Progress

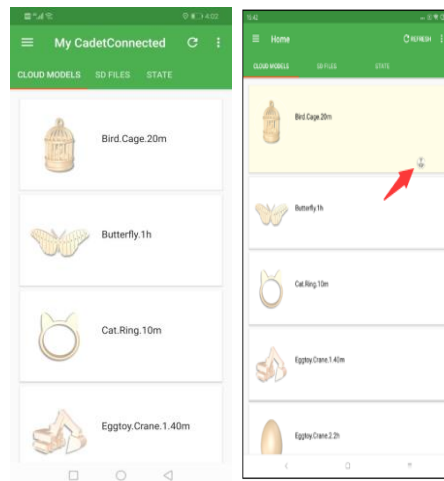


1. With the **Printing... Screen** displayed, press the **Knob** to display the **Print Control Menu**.

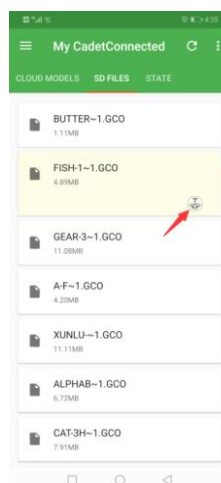
2. Rotate the **Knob** until the **Stop Print** option is highlighted, then press the **Knob** to cancel the print.

Printing with the App

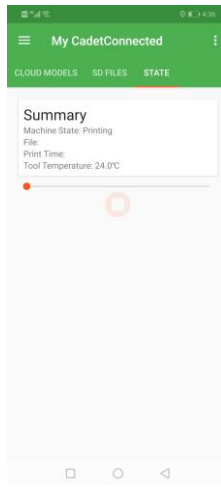
1. Launch the PoloPrint app. The app will list models on the cloud. Each model's "card" shows the approximate amount of time it will take to print. To print a model, touch the model's "card", then touch the icon that appears in the lower right corner of the "card". The app will download the model file from the cloud. When the download is finished, it will start printing automatically.



2. If you want to view the files on the microSD™ card, touch the **SD FILES** tab at the top of the screen. The app will display the files on the microSD card. To print a file, touch the "card", then touch the icon in the bottom right corner of the "card".



3. While the model is printing, you can see the progress of the print by touching the **STATE** tab at the top of the screen.



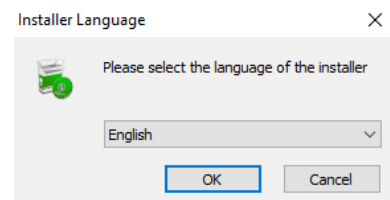
WIIBUILDER SLICING SOFTWARE

Installation

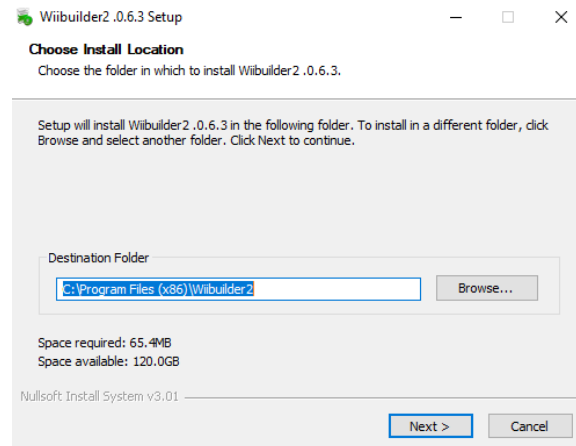
This printer includes a copy of WiiBuilder Slicing Software to turn 3D models into .gcode files for printing from the microSD™ card. The software on the included microSD card has been configured for use with the MP Cadet printer.

To install the software, double click the **Wiibuilder2.0.6.3_Monoprice_setup.exe** installation file on the microSD card, then follow the steps below.

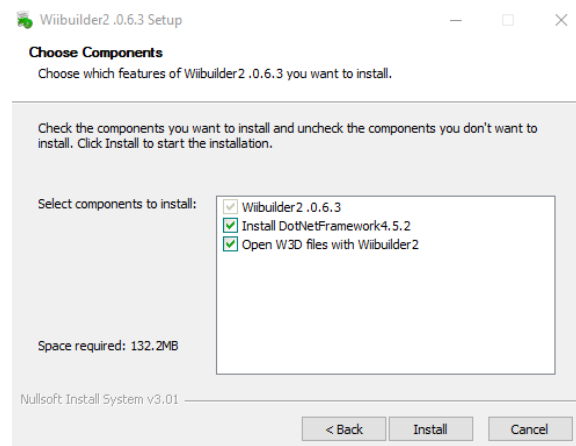
1. The installation wizard will first prompt you to select the installer language. The available languages are English, Japanese, and Simplified Chinese. Select your preferred language and click the **OK** button to continue.



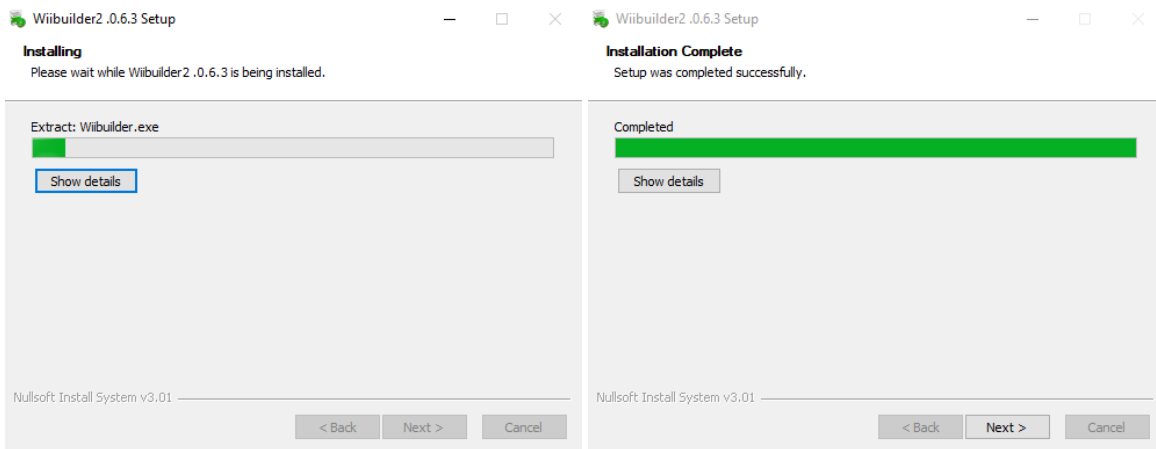
2. The installer will then prompt you to select the directory to which WiiBuilder will be installed. If you do not want to use the default directory, click the **Browse...** button to open the file browser and select your preferred directory. Click the **Next >** button to continue.



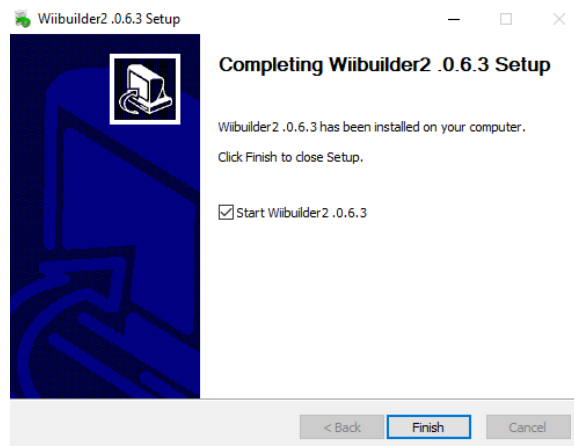
3. The installer will prompt you to select the components you want to install. If you are unsure of which components you need, select all components. Click the **Install** button to start the installation process. If you already have a component installed, the installer will inform you and skip installation of that component.



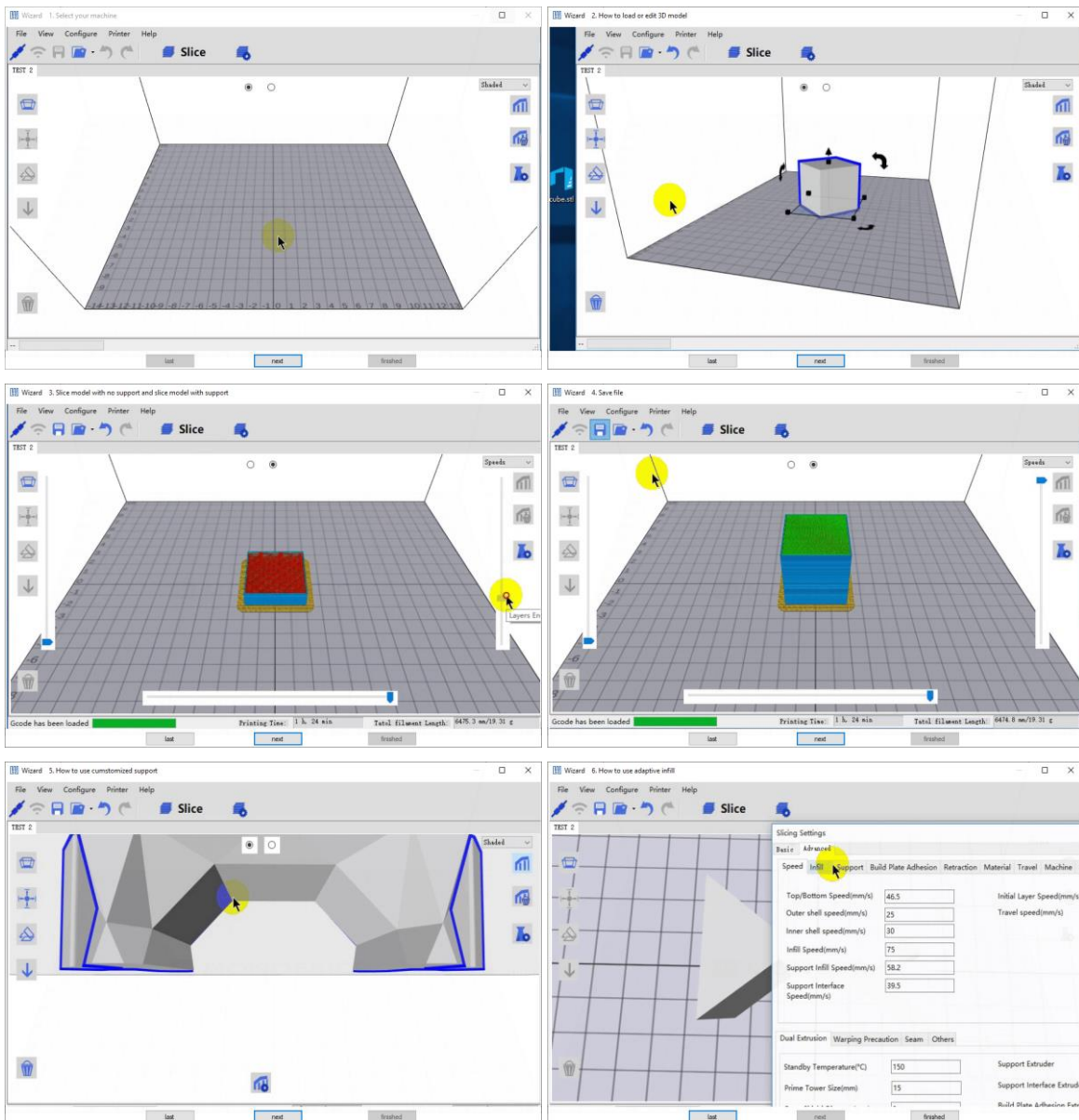
- The install wizard will extract the installation files and install the program. After installation is complete, click the **Next >** button to continue.



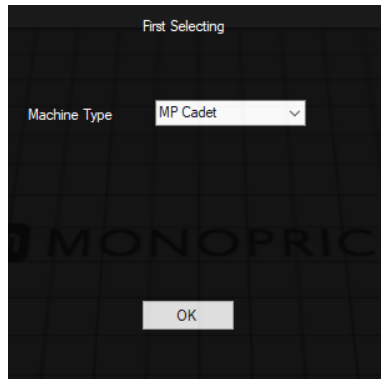
- By default, the installer has the **Start WiiBuilder 2.0.6.3** option should be checked. If not, check the box, then click the **Finish** button to close the installer and launch WiiBuilder.



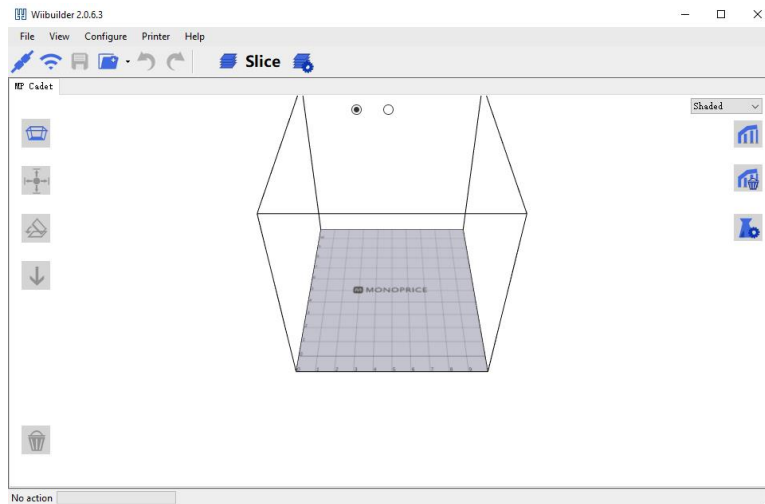
- Once WiiBuilder launches, it will launch a wizard that will display a series of six animated pages that show how to perform several common functions. Click the **next** button to view the next page. If you want to see a previous page, click the **last** button. Once all six pages have been displayed, click the **finish** button to close the wizard.



7. WiiBuilder now prompts you to select the **Machine Type**. Select the **MP Cadet** entry, then click the **OK** button to continue.



8. WiiBuilder is now configured and ready for use! If you want to see the wizard again, click **Help > RunWizard**. If you want to read the product manual, click **Help > Manual**.



TECHNICAL SUPPORT

Monoprice is pleased to provide free, live, online technical support to assist you with any questions you may have about installation, setup, troubleshooting, or product recommendations. If you ever need assistance with your new product, please come online to talk to one of our friendly and knowledgeable Tech Support Associates. Technical support is available through the online chat button on our website www.monoprice.com or through email by sending a message to tech@monoprice.com. Check the website for support times and links.

SPECIFICATIONS

Model	40108
Printing Technology	Fused Filament Fabrication (FFF)
Supported Filament Types	PLA, PLA Pro
Filament Diameter	1.75mm
Nozzle Diameter	0.4mm
Maximum Nozzle Temperature	250°C
Build Volume	3.9" x 4.1" x 3.9" (100 x 105 x 100 mm)
Printing Accuracy	0.1 - 0.4 mm
Leveling Method	Automatic
Supported Slicing Software	WiiBuilder, Cura
Supported Model File Types	.STL, .OBJ, .gcode
Supported Inputs	microSD™ card, Wi-Fi®, WLAN, USB
Maximum microSD Card Capacity	8GB
Supported microSD Card Formatting	FAT32, 4096 bytes per sector
Dimensions	8.5" x 7.9" x 10.6" (215 x 200 x 270 mm)
Weight	6.6 lbs. (3.0 kg)

REGULATORY COMPLIANCE

Notice for FCC



This device complies with Part 15 of the FCC rules. Operation is subject to the following two conditions: (1) this device may not cause harmful interference, and (2) this device must accept any interference received, including interference that may cause undesired operation.

Modifying the equipment without Monoprice's authorization may result in the equipment no longer complying with FCC requirements for Class B digital devices. In that event, your right to use the equipment may be limited by FCC regulations, and you may be required to correct any interference to radio or television communications at your own expense.

This equipment has been tested and found to comply with the limits for a Class B digital device, pursuant to Part 15 of the FCC Rules. These limits are designed to provide reasonable protection against harmful interference in a residential installation. This equipment generates, uses, and can radiate radio frequency energy and, if not installed and used in accordance with the instructions, may cause harmful interference to radio communications. However, there is no guarantee that interference will not occur in a particular installation. If this equipment does cause harmful interference to radio or television reception, which can be determined by turning the equipment off and on, the user is encouraged to try to correct the interference by one or more of the following measures:

- Reorient or relocate the receiving antenna.
- Increase the separation between the equipment and receiver.
- Connect the equipment into an outlet on a circuit different from that to which the receiver is connected.
- Consult the dealer or an experienced radio/TV technician for help.

Radio Notice for FCC



Caution

This FCC Part 15 radio device operates on a non-interference basis with other devices operating at this frequency. Any changes or modification to said product not expressly approved by Monoprice, including the use of non-approved antennas, could void the user's authority to operate this device.

This device complies with Part 15 of the FCC Rules. Operation is subject to the following two conditions: (1) this device may not cause harmful interference, and (2) this device must accept any interference received, including interference that may cause undesired operation.

RF Exposure Statement for FCC



Caution

This equipment complies with radiation exposure limits set forth for an uncontrolled environment. End users must follow the specific operating instructions for satisfying RF exposure compliance. This transmitter must be at least 20 cm from the user and must not be collocated or operated in conjunction with any other antenna or transmitter.

Notice for Industry Canada

This Class B digital apparatus complies with Canadian ICES-003.

Cet appareil numérique de la classe B est conforme à la norme NMB-003 du Canada.

Radio Notice for Industry Canada



Caution

This IC RSS-210 radio device operates on a non-interference basis with other devices operating at this frequency. Any changes or modification to said product not expressly approved by Monoprice, including the use of non-approved antennas, could void the user's authority to operate this device.

This device complies with IC RSS-210. Operation is subject to the following two conditions: (1) this device may not cause harmful interference, and (2) this device must accept any interference received, including interference that may cause undesired operation.

RF Exposure Statement for Industry Canada



Caution

This equipment complies with radiation exposure limits set forth for an uncontrolled environment. End users must follow the specific operating instructions for satisfying RF exposure compliance. This transmitter must be at least 20 cm from the user and must not be collocated or operated in conjunction with any other antenna or transmitter.

Wi-Fi® and Wi-Fi Alliance® are registered trademarks of Wi-Fi Alliance.

microSD™ is a trademark of SD-3C, LLC.