

Network USB 2.0

Quick Installation Guide

Multiple languages Manuals available inside CD



PRINT SERVER



USB 2.0 HUB



USB LPR Print Server



USB 2.0 Server M1



USB 2.0 Server M4



USB 2.0 Server M4



USB 2.0 Server M4



Wireless 11N USB 2.0 SOHO
Manager M4



PRINT SERVER



USB 2.0 HUB

REV.1.26

Copyright Notice

Copyright Incorporated 2010. All rights reserved.

Disclaimer

Incorporated shall not be liable for technical or editorial errors or omissions contained herein; nor for incidental or consequential damages resulting from furnishing this material, or the performance or use of this product.

Incorporated reserves the right to change product specifications without notice.

Information in this document may change without notice.

Trademarks

Microsoft, Windows XP, Windows VISTA and Windows 7 are registered trademarks of the Microsoft Corporation. All other brand and product names mentioned herein may be registered trademarks of their respective owners.

Customers should ensure that their use of this product does not infringe upon any patent rights. Trademarks mentioned in this publication are used for identification purposes only and are properties of their respective companies.

WEEE Directive & Product Disposal



At the end of its serviceable life, this product should not be treated as household or general waste. It should be handed over to the applicable collection point for the recycling of electrical and electronic equipment, or returned to the supplier for disposal.

Table of Content

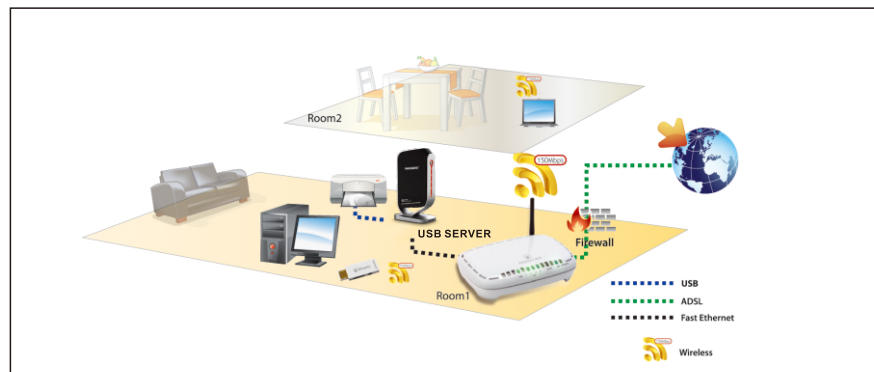
Environment Setup	01
Introduction	02
Hardware Installation	05
USB LPR Printer Setup on Windows	06
USB LPR Printer Setup on Mac OS X™ (Bonjour)	12
Installation Networking USB Server Utility	16
Networking USB Server Setup on Windows	17
Networking USB Server Featured Functions	24
Connect Automatically for Printing	24
Connect this device when application starts	24
Auto Disconnect Printer/MFP/Storage Device	25
Create a Shortcut on Your Desktop	27
Device Property	28
Control menu	29
Configuration with the Utility	30
Configuration with Web-based UI	32
Removing Networking USB Server Utility from your System	35
MFP-Printer / LPR Printer Compatibility List	36

The Manual for:

- **Networking USB LPR Print Server (only Support USB LPR Printer)**
- **Networking USB 2.0 100M (Support Multi-Function Printers and USB Devices)**
- **Networking USB 2.0 1000M (Support Multi-Function Printers and USB Devices)**

Environment Setup

The picture above depicts a sample household Network USB Device use environment. To setup the device, simply plug it into the home/Office network under the same router and power it on. Then it could be shared by all the computers on the same network.



Introduction

Thank you for purchasing this Networking USB 2.0 Server that allows any networked computer to share a USB printer, USB Devices. It complies with USB 2.0 specifications (and is backward compatible with USB 1.1), and provides an auto-sensing Ethernet port that works with either 10Base-T, 100Base-T or 1000Base-T networks. This unit also supports multiple protocols and multiple operating systems. The built-in web management feature provides more convenience by allowing the user to configure, monitor and even reset the USB server via a web browser.

The new USB Server enables an external hard drive, flash drive, memory card reader, USB webcam, USB speaker, USB Multi-Function Printer (MFP), or Other USB Devices to be shared on a network. With the versatility afforded by the USB Server, users can now enjoy their favorite multimedia content stored on their computer from anywhere in their home or office use. When connecting USB Server to a wireless router, users can access their multimedia content and USB devices wirelessly. The UPnP technology enables quick and easy setup and configuration in a Windows environment.

We hope that you will enjoy using your USB Server/Print Server and find it to be a useful solution.

Please read this user manual carefully before using. All information on this booklet is subject to change without notice due to technical reasons.

Features

- Easily connects your USB Printer, USB Device to a network
- Allows multiple computers to share USB Printer, USB Device on the network
- Print from any computer on your local network
- Supports DHCP Client and multiple network protocols
- 10Base-T/100Base-T auto-sensing
- 10Base-T/100Base-T/1000Base-T auto-sensing (for 1000M LAN Model)
- Supports Web Management software

Package Contents

<p>for Networking USB Server</p> <ul style="list-style-type: none"> • Networking USB 2.0 Server • Networking Cable • Power Adapter 5V • Installation CD • User Manual 	<p>for Networking USB LPR Print Server</p> <ul style="list-style-type: none"> • Networking USB LPR Print Server • Networking Cable • Power Adapter 5V • Installation CD • User Manual
---	---

If any items are damaged or missing, please contact your dealer.

System Requirements

- Windows XP/2003/Vista, Windows 7
- Mac OS X 10.2 or later (only support Printer)
- Device with a USB connection

NOTICE

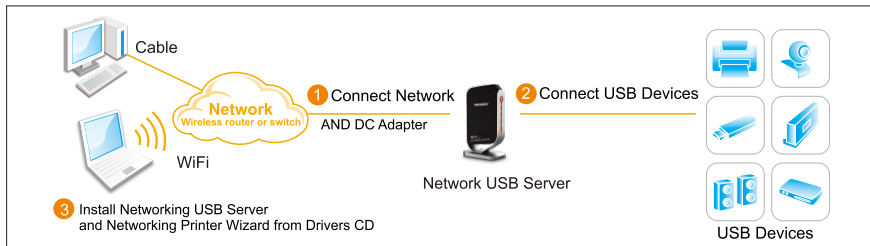
1. Do not use the Network USB Server in the extreme hot, cold, dusty or humid environment.
2. Prevent friction with hard objects or it may lead to surface abrasion or hardware damage.
3. Avoid the hub falling down from a high place, or it may damage the hardware inside.
4. Do not use any alcohol, thinner or benzene to clean the device.
5. Please do not use power adaptor with different voltage rating. It will damage or burn the network hub.
6. Always check if the device driver is required by some USB peripherals such as Printers, Webcams etc. Please install the device driver on your computer first.
7. Some USB devices require a direct connection to PC for optimum performance.
8. The Network hub provides 5V power supply which is enough for most USB devices but the power can be in short supply when connecting too many devices like 2.5" external hard disk or connecting other devices with high power consumption simultaneously. Please attach their self-power supply in order to co-work with the network hub properly.
9. Make sure your network is working and the network cable is connected to the network hub as well.
10. You may need to configure the IP address of the network before accessing any USB devices connected with the hub. Please read the user manual.

IMPORTANT NOTE

You can reset your network usb server to default setting by press the 'RESET' button on the back side of the hub.

You can use this solution if you forget your password.

Hardware Installation



1. Make sure your network is working properly.
2. Connect the USB Printer or other USB devices to the USB ports on the Network USB Server directly or via enclosed USB extension cable.
3. Make sure all the driver of the devices connected with the Network USB Server is installed on your computer properly.
4. Connect the Network USB Server to the router or Ethernet switch/hub or bridge by enclosed network cable.
5. Plug in the power adapter to the Network USB Server.
6. Install the driver of the Network USB Server (please find instructions in the next section).

USB LPR Printer Setup on Windows

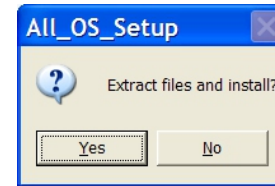
Provides a straight forward and easy-to-use utility that helps you to set up USB printers connects to LPR Printer server as network printers, Network Printer Wizard. This utility reduces the dozens of steps in setting up network printer via Windows build-in printer setup program to a few point-and-clicks with the mouse. Users no longer need to deal with the confusing IP setting, queue name entering and port configuration.

Install Network Printer Wizard Software

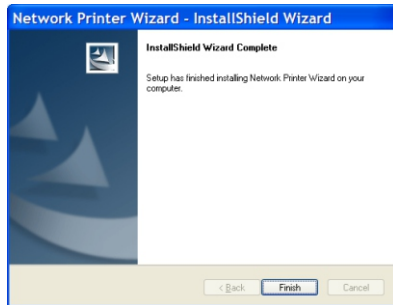
To start the installation, please double click **Setup.exe**, and then click **Networking Printer Wizard for Windows** from autorun setup cover page.

Wait for the installer to run:

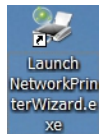
Extract Files and install? Click on **Yes**:



Click on **Finish** to exit installer once installation completes:



The installer creates a shortcut on the Desktop for you:

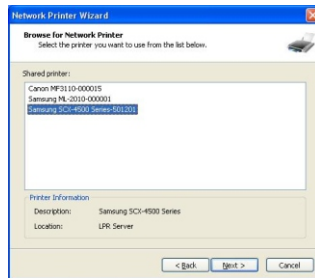


Network Printer Wizard Setup

1. Now we can start setting up your printer. Please click on the Launch Network Printer Wizard icon created on the desktop.
2. Please click on **Next** to continue when you see this welcome dialog box.



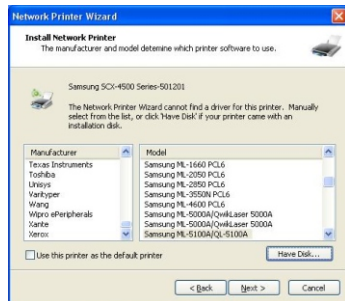
3. Please select the printer you would like to setup on this list and then Click on **Next**. The number of printers you see on this list depends on the number of printers that are connected to your network. If you only have one printer on the network, you see only one printer on this list. If you don't see any printers, please make sure your printers and USB LPR Printer Server is correctly powered on and connected to the network.



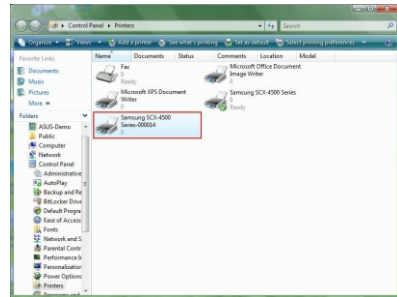
4. On the next dialog box, please select the driver from the list if it's there, and then click on the **Next** button and go to **step 7**. Else, read on.

If you can't find the target printer's driver on the list, please insert the disk containing the printer's driver, click on **Have Disk...** button then go to step

5. You must browse to the folder that contains the driver for your printer and click on **OPEN** to use it:
6. Then, select the driver from the list again and then click on the **Next** button. If you didn't select the correct driver, here is the chance for you to verify. Please click on **Have Disk...** again to re-select.
7. Once you have selected the correct driver from the list, please click on **Finish** button. The wizard might take a minute to setup the network printer for you.



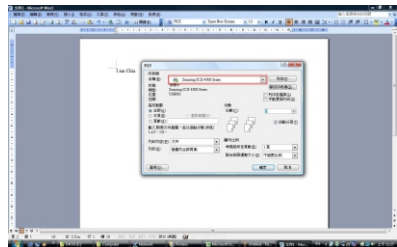
8. After the printer has been setup correctly, you can see it under **Control Panel > Printers**:



Now you can print any document using the printer you just setup:

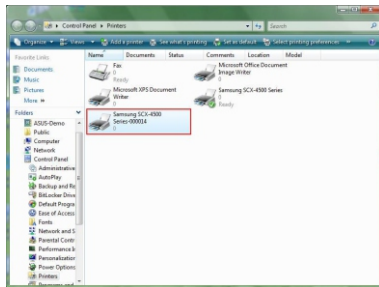
If you have more than one printer set up, please make sure you have selected the correct printer to print.

NOTE: REMEMBER, THIS SETUP IS A ONE-TIME THING. YOU DO NOT HAVE TO RUN THIS PROCESS EVERY TIME YOU WANT TO PRINT. HOWEVER, OF COURSE, IF YOU REMOVE THE NETWORK PRINTER WIZARD PROGRAM, YOUR PRINTER SETUP WILL NO LONGER WORK.



Remove the Printer Setting

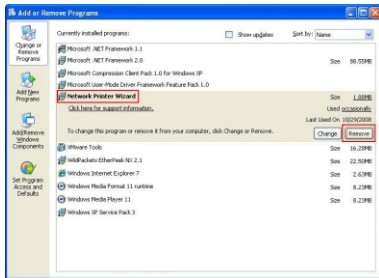
To remove the printer setup, please go to the **Control Panel > Printers** dialog box and remove the printer entry from it.



Simply **Delete** this icon by pressing **Del** key on your keyboard. Then it will be removed from the list of usable printers when you print document.

Remove the Program

To remove the Network Printer Wizard program, please go to **the Control Panel > Add or Remove Programs** (Programs and Features on Windows VISTA)



Then select to remove the program
Then follow the instructions of the installer complete the removing process:

NOTE: Once you remove this problem, you will no longer be able to print using the printers you setup with Network Printer Wizard

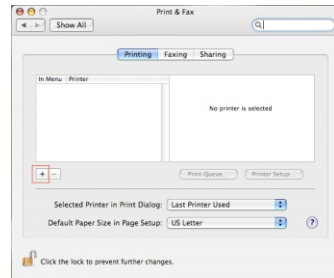
USB LPR Printer Setup on Mac OS X™

1. MAC OS by Apple Inc. comes with a built-in utility very similar to Network Printer Wizard. To start, please go to **“System Preferences”** on the Dock menu:
2. Once you have the **“System Preferences”** window up, please locate the **“Print & Fax”** item:



Double click on **“Print & Fax”** to start selecting printer for installation.

3. This window shows you the printers that have been installed on your Mac. To install a new printer, please click on the **“+”** button to select printers.

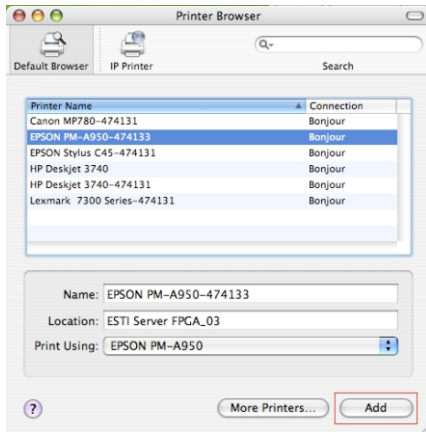


- Select the printer you would like to setup from the list. The number of printers you see on this list depends on the number of printers that are connected to your network. If you only have one printer on the network, you see only one printer on this list.

If you don't see any printers, please make sure your printers and Networking LPR Printer Server is correctly powered on and connected to the network

- As you select the printer to install, **Bonjour** will select the correct printer driver for you and is shown at the “**Print Using:**” field:

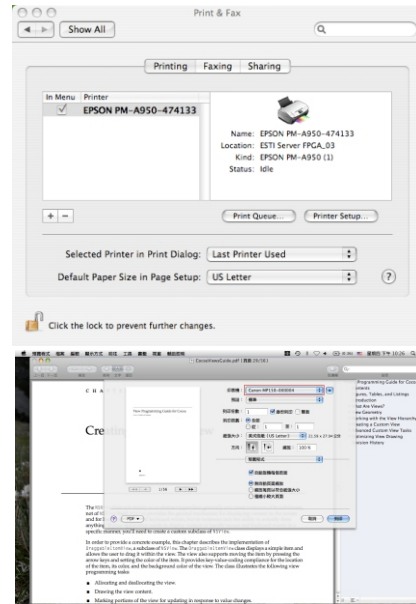
Once you have highlighted the printer to install, click on **Add** button to install it.



- Once installation is done, you should be able to see this on your “**Print & Fax**” window: You will see that the A950 printer appeared on the available printer list. You can now use this printer for printing your documents or pictures.

NOTE: REMEMBER, THIS SETUP IS A ONE-TIME THING. YOU DO NOT HAVE TO RUN THIS PROCESS EVERY TIME YOU WANT TO PRINT.

- When printing your document, simply select the printer you just setup on the available printer list:



Removing the Printer Setting

1. To remove a printer setting, please go to your Printer and FAX again:

Select from the available printer list on the left and then click on the “-” button to remove it.



2. Once removed, the printer will disappear from the list, and when you print document, you will not be able to select it anymore.



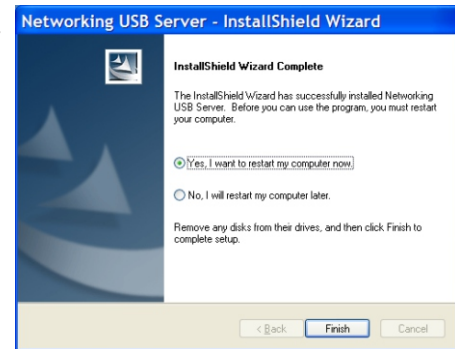
Installation Networking USB Server Utility

To start the installation, please double click **Setup.exe**, and then click **USB Server for Windows** from autorun setup cover page.

The installer will automatically install the program.

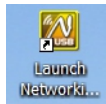
When done Select **Yes**, I want to restart my computer now and click **Finish** to reboot your computer.

After the installation completes, a shortcut will be created on your Desktop.



Networking USB Server Utility on Windows

To start the Networking USB Server utility, simply double click on the shortcut. This would bring up the main dialog as shown below.



System Firewall

When you start the program for the time, your Windows OS will prompt you for Firewall Access. Please make sure you unblock the software or grant it access, otherwise the program will not work correctly.

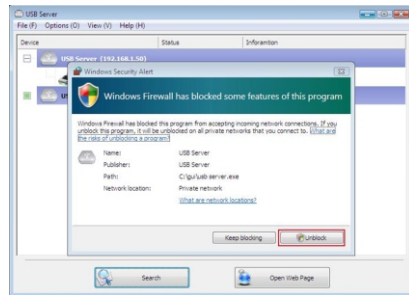
Windows XP Firewall Access Alert

Please make sure you **“Unblock”** the program.



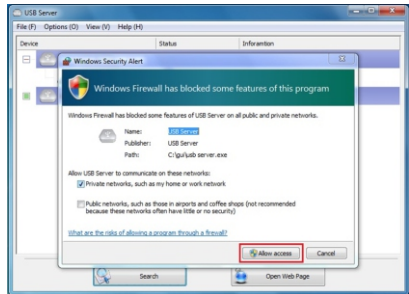
Windows Vista Firewall Alert

If your system is running Windows Vista, please make sure you **“Unblock”** the program.



Windows 7 Firewall Alert

If your system is running Windows 7, please make sure you click on **“Allow access”** when you see this alert.

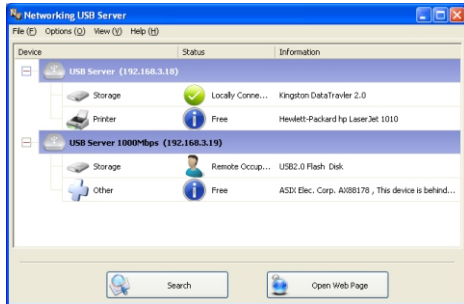


Once you have done this once, the system will remember your setting and will not prompt you again next time you run the software.

Main Dialog Box

Once you have start up the program and grant it access through the firewall, you will see this main dialog box.

The main dialog box is consisted of a **Control Menu** (File, Options, View and Help), a tree view in the middle that displays a list of all the server and devices discovered on the network, a **Search** button to get the current status of all USB Servers and devices, and a button that toggles between **Open Web Page** and **Connect Device** depending on the node you select on the tree view. The **Open Web Page** button toggles to Connect Device when a device is highlighted.



Status of USB Servers and Devices

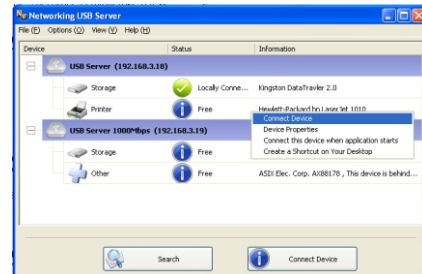
The device might be in one of the following states and there are different things you can do with it in each of the states. Each status is represented by a specific icon.

	Device Online and Free for connection		Device Occupied by yourself
	Device Occupied by other user		Device Unsupported
	Device on Different Segment		Have Error

Accessing a USB Device

To connect to a USB device, please select it on the tree view and click on Connect Device button or double-click on it. This process might take a few seconds up to a minute, depending on the complexity of the device.

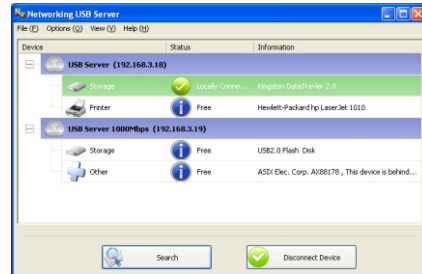
Then you can operate a connected USB device as if it is connected to your PC's USB port directly.



If you select a connected device on the UI, you can see that the **Connect Device** button is changed to **Disconnect Device**:

Clicking on this button releases the selected device for other users. Once you see the icon turns back, the device has been disconnected and other users will then be able to connect to it.

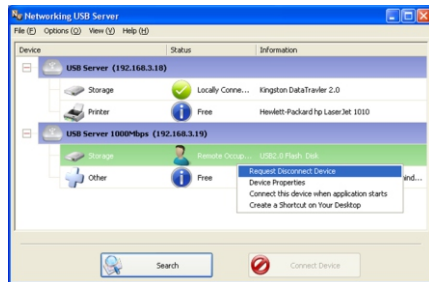
This operation is exactly like when you unplug a USB device from your PC's USB port.



Search

When you are in need of knowing the status of all the servers and devices immediately, use the **Search** button.

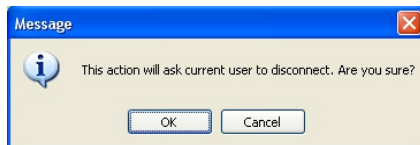
Clicking on the **Search** button triggers the program to immediately poll the network for the status of all the servers and devices. The result will be updated to the tree view.



Device Control Request

To request other user to release a Network USB device, use the **Request Disconnect Device** option from the right-click menu.

Of course, this option would only be enabled when the device is currently occupied by someone else. The current occupied user will see this message pops up



Clicking on **YES** to release the device if you are done, click on **Cancel** if you are still using it.

The requesting user will see this message if the occupying user releases the device:

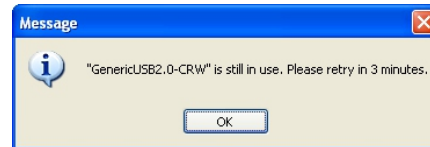


Then the device will be free to connect:



If the occupying user click on **Cancel** when received the request, requesting user will see this message instead:

The 3 minute rule is to prevent request spamming. That is, to prevent the current occupying user from being flooded with disconnect request in a short period of time.

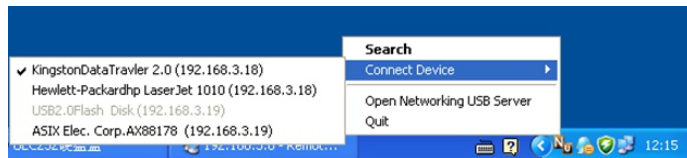


System Tray Icon

When minimized to system tray, the Networking USB Server Utility will still be running.

Right click on the icon brings up a menu of operations you can still do.

As you can see, you can still do Search and Connect. Search is the same. But to connect a storage device, move your mouse to the **“Connect”** option and a list of Network USB Devices will show up. Simply click on the device you would like to connect to connect it.



When connect, a check mark will appear right next to the device on the device list.

To disconnect the device, simply click on it again.

“Open Networking USB Server” option brings up the main GUI. **“Exit”** option terminates the utility entirely.

Networking USB Server Featured Functions

Connect Automatically for Printing

This is another one of our very convenient functions. What this function does it that when you send a printing task to this printer, it detects this printing task and AUTOMATICALLY connect this printer to print out the document. When the printing task is done, the printer will then be AUTOMATICALLY disconnected so that other users can use it. The user no longer has to manually connect and disconnect the printer.

NOTE: This function will be enabled for printers or MFPs that has been installed and used on your PC. For a new printer/MFP, please make sure you have installed it (has been connected via USB port or via USB Server software and worked correctly) on your PC first.

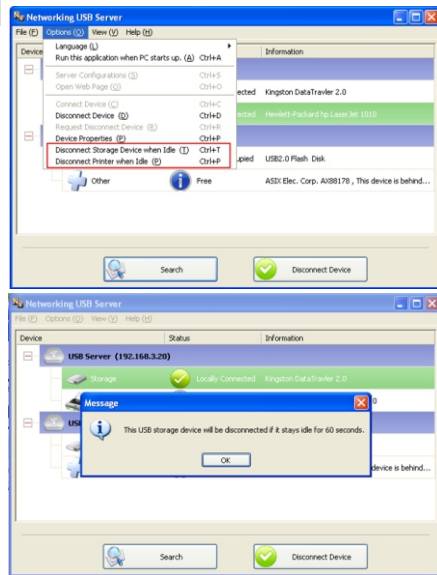


Connect this device when application starts

When enabled, this function automatically connects the target device 15 seconds after the application starts running. If you are using a USB hub or the server has a built-in HUB (4-port USB server has a built-in hub), the device won't be automatically connected if you switch it to another port. If this device is occupied when the application starts, then it will not be connected. If this device is offline when the application starts, then the device will not be connected.

Auto Disconnect Printer/MFP/Storage Device

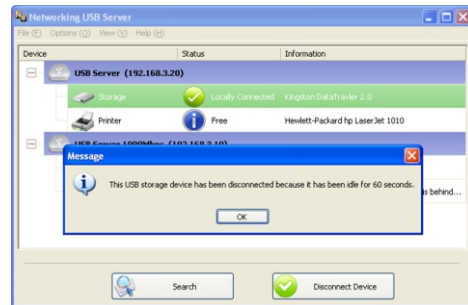
These functions are there to prevent the case when one user connected a Printer or Storage device but forget to disconnect when he/she is done with the device.



When these two functions are enabled, you will see this message when you connect a Storage device or a printer:

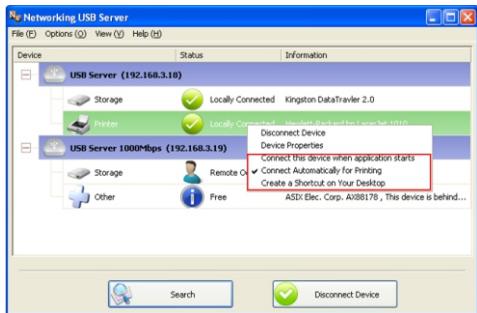
When the Idle time is up and the device has been disconnected, you get another notification:

NOTE: This function might not work with Storage device such as pen driver/flash driver. These devices tend to periodically (on a millisecond base) communicate with the OS even when the user is not reading data from it or writing data to it. So it never actually stays “Idle” and will never be automatically disconnected by this function. External USB HDD type storage device does not have this problem.



Create a Shortcut on Your Desktop

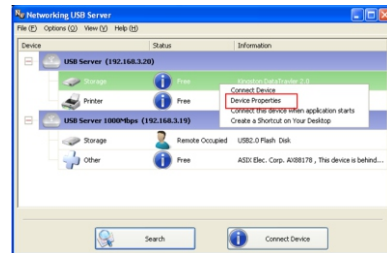
This function creates a shortcut on your Desktop that, when double clicked, starts up an application and connects a targeted device at the same time. This function is particularly useful when the functions or one of the functions of the targeted device must work with a specific application, such as a multi-function printer and the photo/picture scanning utility. Normally, if you want to scan with a scanner connected to a USB server, you must first connect the Scanner with the USB Server software, then run the scan software and start scanning. When you finish with scanning you have to close the scan software and then disconnect the scanner so that other user can use it.



However, this shortcut function consolidates these steps into two quick double-click.

Device Property

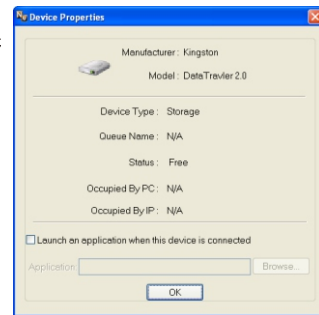
Clicking on the **Device Property** to bring up the Device Property dialog box.



Device Property dialog box displays information of the USB device. If the device is occupied, it also displays the occupying PC name and the IP of the PC occupying it.

This dialog box provides a quite useful function. Check the **Launch a program when this device connects** checkbox and provide the path to that program/utility/application software, then the program/utility/application software would automatically starts up after you connect the device.

This function is particularly useful when the USB device you connect works with an application, such as scanning utility with a multiple function printer.



Control menu

File -> The **Quit** function exits the program.

Options -> **Language** : You can change the utility's language with this option. The default language would be the same as your system's language.

->**Setting Server**: Same function as the Setting Server option on the server icon's right click menu.

->**Run USBServer When PC Starts Up**: This utility automatically runs when your system starts up.

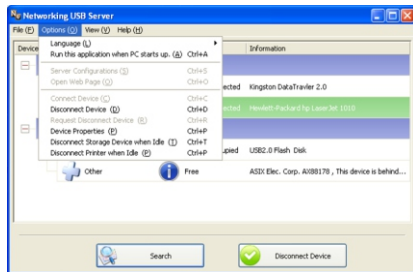
Open Web Page: Brings up the server's configuration web pages.

->**Connect Device and Disconnect Device**: Connects and disconnects the selected device.

->**Request Disconnect Device**: When you want to use a device occupied by other user, you can highlight that device and use this function. This sends a message to the occupying user with your request. The occupying user would either release the device or deny the request if s/he is still using the device.

View

The tree view in the main dialog has two display modes: "**Servers and Devices**" mode and "**Devices Only**" mode. The default setting is "**Devices Only**" mode. You can toggle between these two display modes with the View option on the control menu:

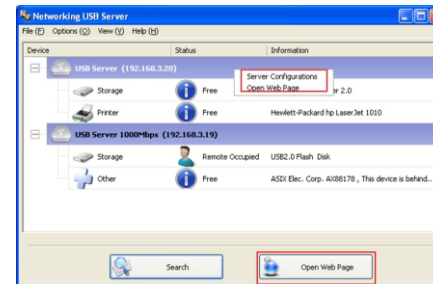


Configuration with the Utility

Networking USB Server utility provides some advanced setting function for users to configure the device to better fit their needs. To bring up the configuration dialog, please RIGHT-CLICK on the device you would like to configure like this,

And select the "**Setting Server**" option.

You might be prompted to enter password if a password has been set. If not, you will immediately see the dialog.



NOTE: ONLY A FREE DEVICE IS ALLOWED TO BE CONFIGURED, AND TEHEREFORE THIS SETTING OPTION ONLY APPEARS ON FREE NETWORK USB DEVICE

Server Name: This field allows you change the Server name.

Change it whatever you want.

USE DHCP: When this field is checked, your server acquires IP address automatically. Uncheck it and you can enter IP address automatically.

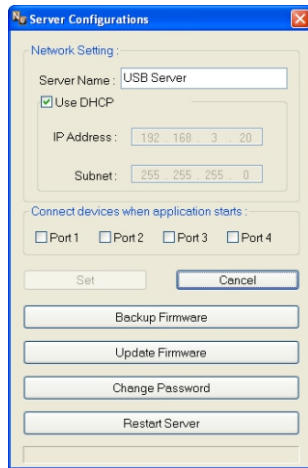
NOTE: You can apply this function to a server under different network segment. **HOWEVER**, some router/switch hub does not allow communication between servers under different segment. In this case, you won't even see the server on a different network segment.

Backup Firmware: this function is a fail-save mechanism for the Update Firmware function. Just browse to where you want to save the backup file and click on Save to save the file.

Update Firmware: update firmware with this function. Use the Browse button to choose the firmware to update. Click on Open to start.

Change Password: Simply enter the new password and enter it again for confirmation. Click on Submit to change.

Restart Server: This button reboots the server. Please note that this function will not work if the server you attempt to reset has a device connected to it and the device is occupied by a user.



Server Configurations

Network Setting :

Server Name : USB Server

Use DHCP

IP Address : 192 . 168 . 3 . 20

Subnet : 255 . 255 . 255 . 0

Connect devices when application starts :

Port 1 Port 2 Port 3 Port 4

Set Cancel

Backup Firmware

Update Firmware

Change Password

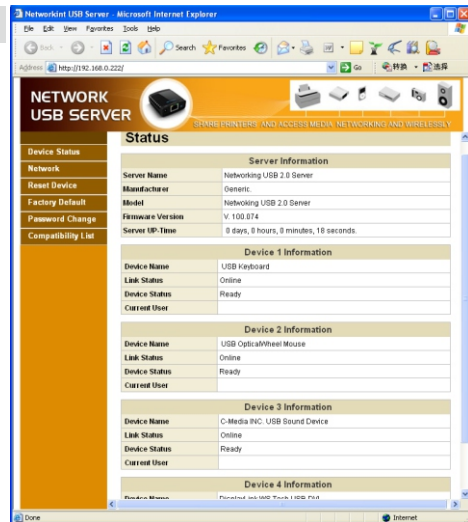
Restart Server

Configuration with Web-based UI

We allow the users to configure the settings of the USB Servers via the web-based UI. Select the target server on the tree view and then click on the **Open Web Page** button or the same option on the right-click menu of server icon, to bring up the web-based configuration UI.

Your default web browser will pop up and take you into the web-based configuration UI of the server.

This is the main page of the configuration UI. You can see the important information about the Networking USB Server and the device(s) connected to it. The links at the left-hand side each represents a function. Clicking on **“Device Status”** brings you back to this page, and the other links take you to pages with different functions.



Networking USB Server - Microsoft Internet Explorer

Address: http://192.168.0.222

NETWORK USB SERVER

Device Status

Network

Reset Device

Factory Default

Password Change

Compatibility List

Status

Server Information

Server Name	Networking USB 2.0 Server
Manufacturer	Generic
Model	Networking USB 2.0 Server
Firmware Version	V. 100.074
Server UP-Time	0 days, 0 hours, 0 minutes, 18 seconds.

Device 1 Information

Device Name	USB Keyboard
Link Status	Online
Device Status	Ready
Current User	

Device 2 Information

Device Name	USB Optical/Wheel Mouse
Link Status	Online
Device Status	Ready
Current User	

Device 3 Information

Device Name	C-Media INC. USB Sound Device
Link Status	Online
Device Status	Ready
Current User	

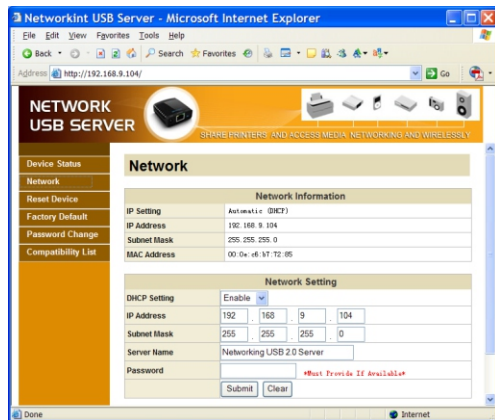
Device 4 Information

Device Name	Printed Job USB Track 1 USB Pad
Link Status	Online
Device Status	Ready
Current User	

Networking Information/Setting

This page displays the current network setting of the server and provides links to the pages where you can perform special actions. You can change the network setting according to your need. However, please note that if you would like to give this server a static IP, please disable the DHCP option. Once you are done, please click on the **“Submit”** button and reboot the server.

NOTE: A Server with busy device(s) connected is prohibited to be configured to prevent interruption of any on-going tasks.



Change Password

Clicking on this link takes you to the password update page below:

To change the password, you must enter current password, input new password and re-input new password for confirmation and then click on **“Submit”**. If you are setting the password for the first time, you don't have to provide current password.

Restart Server

Clicking on this link takes you the page show below:



With the **“Restart Server”** button you can reboot the server. However, if there is a password, you must enter it for this function to work. Password is by default blank. So, unless a password is explicitly set, you do not have to enter anything for the reset function to work.

Factory Default

Clicking on this link takes you the page where you can restore the server's settings back to default: Again, the password is not necessary if no password is set. Just leave the field empty and click on the **“Factory Default”** button to restore the factory default settings.

Removing Networking USB Server Utility from your System

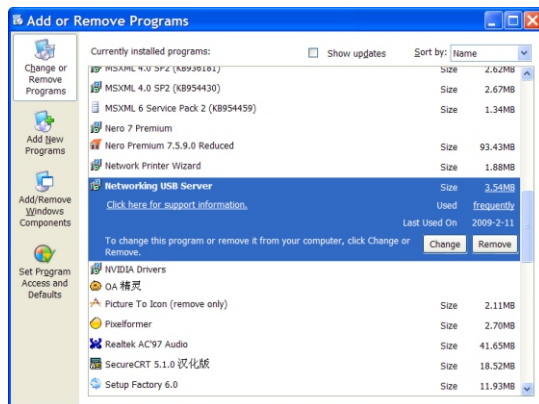
To uninstall Networking USB Server software, please go to **Control Panel > Add or Remove Programs**

Then please browse through the program list and find **Networking USB Server** program

Please select it and click on the Change/Remove button. Then the uninstaller will start up and prompt you:

When done the installer will prompt you to reboot:

Please select **Finish** to restart your computer. This completely uninstalls the Networking USB Server software from your computer.



MFP-Printer / LPR Printer Compatibility List

No	Brand	Model Name	XP		Vista / 7**	
			MFP	LPR*	MFP	LPR*
1	Avison	MF3230	Pass	Pass	Pass	Pass
2	BenQ	CM3000	Pass	N/A	Pass	N/A
3	BenQ	CM3500	Pass	N/A	Pass	N/A
4	Brother	HL 2040	Pass	Pass	Pass	Pass
5	Brother	HL 5250DN	Pass	Pass	Pass	Pass
6	Brother	MFC-240C	Pass	Pass	Pass	Pass
7	Brother	MFC-3820cn	Pass	Pass	Pass	Pass
8	Brother	MFC-3320cn	Pass	Pass	-	Pass
9	Brother	MFC-7420	Pass	Pass	Pass	Pass
10	Canon	CanonScan Lide 5.0	N/A	-	N/A	-
11	Canon	ImageClass MF3110	Pass	Pass	Pass	Pass
12	Canon	ImageClass MF3112	-	Pass	-	Pass
13	Canon	ImageClass MF3220	-	Pass	-	Pass
14	Canon	ImageClass MF3222	-	Pass	-	Pass
15	Canon	ImageClass MF4010	Pass	Pass	Pass	Pass
16	Canon	ImageClass MF4150	Pass	Pass	Pass	Pass
17	Canon	iP100	-	Pass	-	Pass
18	Canon	iP1700	Pass	-	Pass	-
19	Canon	iP2500	Pass	Pass	Pass	Pass
20	Canon	iP2600	Pass	-	Pass	-

21	Canon	iP3300	Pass	-	Pass	-
22	Canon	iP3500	Pass	-	Pass	-
23	Canon	iP3600	Pass	-	Pass	-
24	Canon	iP4200	Pass	Pass	Pass	Pass
25	Canon	iP4300	Pass	-	-	-
26	Canon	iP4500	Pass	-	Pass	-
27	Canon	iP4600	Pass	-	Pass	-
28	Canon	iP5000	Pass	Pass	Pass	Pass
29	Canon	iP6700D	Pass	Pass	Pass	Pass
30	Canon	iP7500	Pass	Pass	Pass	Pass
31	Canon	iP90	Pass	Pass	Pass	Pass
32	Canon	iP90v	Pass	Pass	Pass	Pass
33	Canon	iX5000	Pass	-	Pass	-
34	Canon	LBP 1100	Pass	NS	N/A	N/A
35	Canon	LBP 3200	N/A	N/A	Pass	N/A
36	Canon	LBP 3300	N/A	N/A	Pass	N/A
37	Canon	LBP 3700	Pass	Pass	N/A	N/A
38	Canon	MP110	-	Pass	-	Pass
39	Canon	MP130	Pass	Pass	Pass	Pass
40	Canon	MP145	-	Pass	-	Pass
41	Canon	MP150	Pass	Pass	-	Pass
42	Canon	MP160	-	Pass	-	Pass
43	Canon	MP170	-	Pass	-	Pass
44	Canon	MP180	-	Pass	-	Pass

45	Canon	MP450	Pass	Pass	Pass	Pass
46	Canon	MP460	Pass	Pass	Pass	Pass
47	Canon	MP470	Pass	Pass	Pass	Pass
48	Canon	MP480	Pass	-	Pass	-
49	Canon	MP510	Pass	Pass	Pass	Pass
50	Canon	MP520	Pass	Pass	Pass	Pass
51	Canon	MP540	Pass	-	Pass	-
52	Canon	MP600	Pass	Pass	Pass	Pass
53	Canon	MP610	Pass	Pass	Pass	Pass
54	Canon	MP620	Pass	-	Pass	-
55	Canon	MP630	Pass	-	Pass	-
56	Canon	MP730	Pass	Pass	Pass	Pass
57	Canon	MP780	Pass	Pass	Pass	Pass
58	Canon	MP810	Pass	Pass	-	Pass
59	Canon	MP830	Pass	Pass	Pass	Pass
60	Canon	MP960	Pass	Pass	Pass	Pass
61	Canon	MP970	Pass	Pass	Pass	Pass
62	Canon	MP980	Pass	-	Pass	-
63	Canon	MX308	Pass	Pass	Pass	Pass
64	Canon	MX700	-	Pass	-	Pass
65	Canon	MX7600	Pass	Pass	Pass	Pass
66	Canon	MX850	Pass	Pass	Pass	Pass
67	Canon	Pixus 990i	Pass	Pass	Pass	Pass
68	Canon	Pro9000	Pass	Pass	Pass	Pass
69	Canon	Pro9000Mark II	Pass	-	Pass	-

70	Canon	Pro9500	Pass	Pass	Pass	Pass
71	Canon	Pro9500Mark II	Pass	-	Pass	-
72	Dell	Photo 720	Pass	Pass	Pass	Pass
73	Epson	AL-C900	Pass	Pass	N/A	Pass
74	Epson	EPL-5800	Pass	Pass	Pass	Pass
75	Epson	EPL-6200L	Pass	Pass	Pass	Pass
76	Epson	EPL-N2500	Pass	Pass	N/A	Pass
77	Epson	LP 2500	Pass	Pass	Pass	Pass
78	Epson	Perfection1270	N/A	-	N/A	-
79	Epson	PM-100	Pass	Pass	-	Pass
80	Epson	PM-3700C	Pass	Pass	Pass	Pass
81	Epson	PM-A840	Pass	Pass	Pass	Pass
82	Epson	PM-A840S	-	Pass	-	Pass
83	Epson	PM-A950	Pass	Pass	Pass	Pass
84	Epson	PM-G4500	Pass	Pass	Pass	Pass
85	Epson	PM-G5300	Pass	Pass	Pass	Pass
86	Epson	PM-G860	Pass	Pass	Pass	Pass
87	Epson	PM-T940	Pass	Pass	Pass	Pass
88	Epson	PM-T960	Pass	Pass	Pass	Pass
89	Epson	PM-T990	Pass	Pass	Pass	Pass
90	Epson	PX-501A	-	Pass	-	Pass
91	Epson	PX-5600	Pass	Pass	Pass	Pass
92	Epson	PX-5800	Pass	Pass	Pass	Pass
93	Epson	PX-A640	Pass	Pass	Pass	Pass
94	Epson	PX-A740	Pass	Pass	Pass	Pass

95	Epson	PX-FA700	Pass	Pass	Pass	Pass
96	Epson	PX-V780	Pass	Pass	Pass	Pass
97	Epson	Stylus C43UX	Pass	Pass	Pass	Pass
98	Epson	Stylus C45	Pass	Pass	-	Pass
99	Epson	Stylus C60	Pass	Pass	Pass	Pass
100	Epson	Stylus C61	-	Pass	-	Pass
101	Epson	Stylus C65	-	Pass	-	Pass
102	Epson	Stylus C66	Pass	Pass	-	Pass
103	Epson	Stylus C67	-	Pass	-	Pass
104	Epson	Stylus C90	-	Pass	-	Pass
105	Epson	StylusColor670	Pass	Pass	Pass	Pass
106	Epson	Stylus CX2900	Pass	Pass	Pass	Pass
107	Epson	Stylus CX3500	Pass	Pass	Pass	Pass
108	Epson	Stylus CX3700	-	Pass	-	Pass
109	Epson	Stylus CX3810	Pass	Pass	-	Pass
110	Epson	Stylus CX3900	Pass	Pass	Pass	Pass
111	Epson	Stylus CX4700	Pass	Pass	Pass	Pass
112	Epson	Stylus CX4800	Pass	Pass	-	Pass
113	Epson	Stylus CX4900	Pass	-	Pass	-
114	Epson	StylusCX9300F	Pass	Pass	Pass	Pass
115	Epson	Stylus Photo 1270	Pass	Pass	Pass	Pass
116	Epson	Stylus Photo 2200	Pass	Pass	Pass	Pass
117	Epson	StylusPhoto830	Pass	Pass	-	-
118	Epson	StylusPhoto915	Pass	Pass	Pass	Pass
119	Epson	Stylus R310	Pass	Pass	Pass	Pass

120	Epson	Stylus R320	Pass	Pass	-	Pass
121	Epson	Stylus RX510	Pass	Pass	Pass	Pass
122	Epson	Stylus RX530	Pass	-	Pass	Pass
123	Epson	Stylus RX590	Pass	-	-	-
124	HP	Deskjet 1125C	Pass	Pass	Pass	Pass
125	HP	Deskjet 1180C	Pass	N/A	N/A	N/A
126	HP	Deskjet 1220C	Pass	N/A	Pass	N/A
127	HP	Deskjet 3745	Pass	Pass	Pass	Pass
128	HP	Deskjet 5652	Pass	Pass	Pass	Pass
129	HP	Deskjet 640C	Pass	Pass	N/A	Pass
130	HP	Deskjet 830C	Pass	N/A	Pass	N/A
131	HP	Deskjet 920C	Pass	-	Pass	-
132	HP	Deskjet D2360	Pass	Pass	Pass	Pass
133	HP	Deskjet D2460	-	Pass	-	Pass
134	HP	Deskjet D3745	Pass	Pass	Pass	Pass
135	HP	Deskjet D4160	Pass	Pass	Pass	Pass
136	HP	Deskjet D4260	-	Pass	-	Pass
137	HP	Deskjet F300	Pass	Pass	Pass	Pass
138	HP	Deskjet F340	-	Pass	-	Pass
139	HP	Deskjet F350	-	Pass	-	Pass
140	HP	Deskjet F370	-	Pass	-	Pass
141	HP	Deskjet F379	-	Pass	-	Pass
142	HP	Deskjet F380	-	Pass	-	Pass
143	HP	Deskjet F4185	Pass	Pass	Pass	Pass
144	HP	LaserJet 1000	Pass	-	N/A	-

145	HP	LaserJet 1010	Pass	Pass	Pass	Pass
146	HP	LaserJet 1015	-	Pass	-	N/A
147	HP	LaserJet 1018	Pass	NS	Pass	NS
148	HP	LaserJet 1020	Pass	N/A	Pass	N/A
149	HP	LaserJet 1022	Pass	Pass	Pass	Pass
150	HP	LaserJet 1160	Pass	NS	Pass	NS
151	HP	LaserJet 2420	Pass	Pass	Pass	Pass
152	HP	LaserJet 2600n	Pass	-	-	-
153	HP	LaserJet 3015	Pass	-	Pass	-
154	HP	LaserJet 3030	Pass	Pass	-	Pass
155	HP	LaserJet 3050	Pass	Pass	Pass	Pass
156	HP	LaserJet 3050z	-	Pass	-	Pass
157	HP	LaserJet 3330	Pass	Pass	Pass	Pass
158	HP	LaserJet 3380	-	Pass	-	NS
159	HP	LaserJet 1005	Pass	N/A	Pass	Pass
160	HP	Officejet4255	Pass	Pass	Pass	Pass
161	HP	Officejet5510	Pass	Pass	Pass	Pass
162	HP	Officejet5610	Pass	Pass	Pass	Pass
163	HP	Officejet6210	Pass	-	Pass	-
164	HP	Officejet7210	Pass	Pass	Pass	Pass
165	HP	OfficejetG85	Pass	-	Pass	-
166	HP	OfficejetL7380	Pass	Pass	Pass	Pass
167	HP	PS 2610	Pass	Pass	Pass	Pass
168	HP	PS 3110	Pass	Pass	Pass	Pass
169	HP	PS 3210	Pass	Pass	Pass	Pass

170	HP	PS 3310	-	Pass	-	Pass
171	HP	PS 335	Pass	Pass	Pass	Pass
172	HP	PS 7830	Pass	Pass	Pass	Pass
173	HP	PS 8030	Pass	Pass	Pass	Pass
174	HP	PS A310	Pass	-	Pass	-
175	HP	PS C3180	Pass	Pass	Pass	Pass
176	HP	PS C5280	Pass	Pass	Pass	Pass
177	HP	PS P1000	Pass	-	N/A	-
178	HP	PS C1210	Pass	Pass	Pass	Pass
179	HP	PS C1315	Pass	Pass	Pass	Pass
180	HP	PS C1350	Pass	Pass	Pass	Pass
181	HP	PS C1402	-	Pass	-	Pass
182	HP	PS C1410	Pass	Pass	Pass	Pass
183	HP	PS C1510	-	Pass	-	Pass
184	HP	PS C1610	Pass	Pass	Pass	Pass
185	HP	PS C2210	Pass	-	Pass	-
186	HP	PS C2410	-	Pass	-	Pass
187	HP	PS C2510	Pass	Pass	Pass	Pass
188	HP	Scanjet4200C	N/A	-	N/A	-
189	HP	Scanjet4370	N/A	-	N/A	-
190	IBM	Infoprint1332	Pass	N/A	N/A	N/A
191	Konica Minota	MC-2430DL	Pass	-	-	-
192	Konica Minota	Page Pro 1350W	Pass	N/A	N/A	N/A
193	Lexmark	E120	Pass	-	Pass	-
194	Lexmark	P4350	Pass	N/A	Pass	N/A

195	Lexmark	P6250	Pass	N/A	Pass	N/A
196	Lexmark	X1270	Pass	NS	Pass	NS
197	Lexmark	X2250	Pass	N/A	Pass	Pass
198	Lexmark	X2650	Pass	NS	Pass	NS
199	Lexmark	X3350	Pass	N/A	Pass	N/A
200	Lexmark	X3470	Pass	NS	Pass	NS
201	Lexmark	X3550	Pass	NS	Pass	NS
202	Lexmark	X4270	Pass	NS	Pass	NS
203	Lexmark	X5150	Pass	-	Pass	-
204	Lexmark	X5470	Pass	N/A	Pass	N/A
205	Lexmark	X5495	Pass	-	Pass	-
206	Lexmark	X6170	Pass	Pass	Pass	Pass
207	Lexmark	X7350	Pass	NS	Pass	NS
208	Lexmark	X8350	Pass	N/A	Pass	N/A
209	Lexmark	Z1350	Pass	-	Pass	-
210	Lexmark	Z43	Pass	Pass	N/A	N/A
211	Lexmark	Z55	Pass	N/A	Pass	N/A
212	Lexmark	Z705	Pass	Pass	Pass	Pass
213	OKI	B4350	N/A	N/A	Pass	Pass
214	Samsung	ML-1710	Pass	Pass	Pass	Pass
215	Samsung	ML-1750	Pass	Pass	Pass	Pass
216	Samsung	ML-2010	Pass	Pass	Pass	NS
217	Samsung	SCX 4016	Pass	Pass	Pass	Pass
218	Samsung	SCX 4500	Pass	Pass	Pass	Pass

N/A: This USB Device does not have this function
 - : Not Tested (Only a certain function of this device was tested)
 NS : This function is not supported.

Remark:
 1.** Devices compatibility should be the same on both Windows VISTA and 7, except for the case that the device does NOT support the OS.
 2.MFP - Multi-Function Printer
 3.LPR - Line Printer Remote