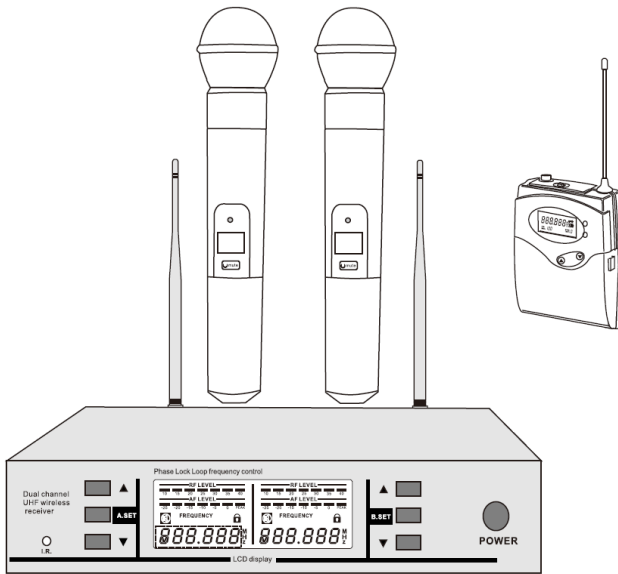


SR

STAGE RIGHT

TM

200-Channel UHF Dual Wireless Microphone



P/Ns 600059, 600060, 600061

User's Manual

SAFETY WARNINGS AND GUIDELINES

Please read this entire manual before using this device, paying extra attention to these safety warnings and guidelines. Please keep this manual in a safe place for future reference.

- This device is intended for indoor use only.
- Do not expose this device to water or moisture of any kind. Do not place drinks or other containers with moisture on or near the device. If moisture does get in or on the device, immediately remove it from its power source and allow it to fully dry before reapplying power.
- Do not touch the device, the power cord, or any other connected cables with wet hands.
- Do not install this device on an unstable surface where it could fall and cause either personal injury or damage to the device and/or other equipment.
- Do not expose this device to excessive vibration or extreme force, shock, or fluctuations in temperature or humidity.
- Do not expose this device to excessively high temperatures. Do not place it in, on, or near a heat source, such as a fireplace, stove, radiator, etc. Do not leave it in direct sunlight.
- This device ventilates excessive heat through the slots and openings in the case. Do not block or cover these openings. Ensure that the device is in an open area where it can get sufficient airflow to keep from overheating.

- Do not place or install this device in an area where it can be exposed to excessive amounts of dust, humidity, oil, smoke, or combustible vapors.
- Use only in a well-ventilated area. Do not use in close, confined spaces.
- Prior to operation, check the unit and power cord for physical damage. Do not use if physical damage has occurred.
- Unplug this device from the power source when not in use.
- Take care to prevent damage to the power cord. Do not allow it to become crimped, pinched, walked on, or become tangled with other cords. Ensure that the power cord does not present a tripping hazard.
- Never unplug the unit by pulling on the power cord. Always grasp the connector head or adapter body.
- Ensure that power is turned off and disconnected before making any electrical connections.
- Remove the batteries from the microphones/bodypacks if they will go unused for a lengthy period of time.
- Do not mix new and old batteries or batteries of different types.
- Clean using a soft, dry cloth only. Do not use chemical cleaners, solvents, or detergents. For stubborn deposits, moisten the cloth with warm water.
- This device has no user serviceable parts. Do not attempt to open, service, or modify this device.

CUSTOMER SERVICE

The Monoprice Customer Service department is dedicated to ensuring that your ordering, purchasing, and delivery experience is second to none. If you have any problem with your order, please give us an opportunity to make it right. You can contact a Monoprice Customer Service representative through the Live Chat link on our website www.monoprice.com or via email at support@monoprice.com. Check the website for support times and links.

PACKAGE CONTENTS

Please take an inventory of the package contents to ensure you have all the items listed below. If anything is missing or damaged, please contact Monoprice Customer Service for a replacement.

1x Receiver

2x Receiver Antennas

2x Handheld Microphones (600059 only)

2x Bodypack Transmitters (600060 and 600061 only)

2x Headset Microphones (600060 only)

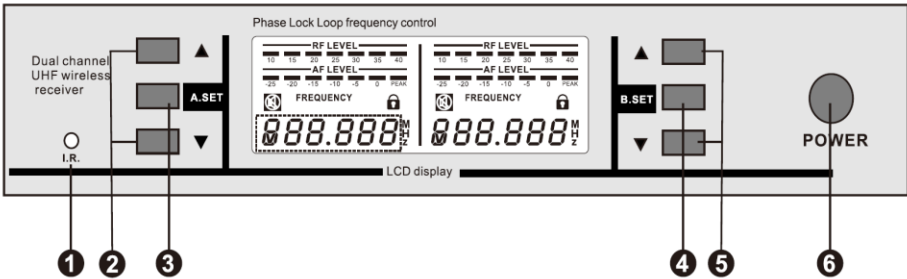
2x Lavalier Microphones (600061 only)

1x AC Power Adapter

1x User's Manual

PRODUCT OVERVIEW

Receiver Front Panel

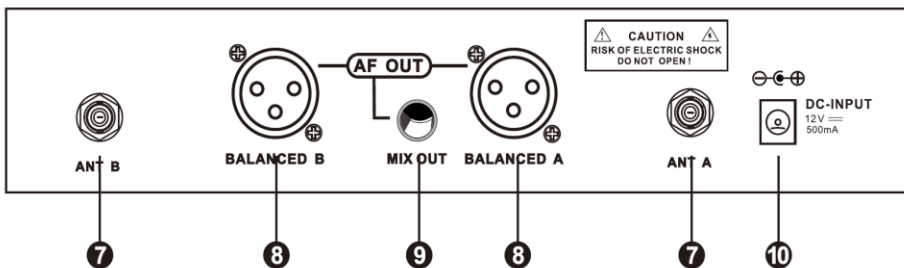


1. **I.R.:** IR receiver.
2. **A▲/▼:** **Up** and **Down** buttons for Channel A. Momentarily press either button to increase or decrease the volume level. Press the **SET A** button and the **A▲** button at the same time to lock or unlock the front panel controls for Channel A.
3. **A SET:** **SET** button for Channel A. Press the button one time to initiate IR synchronization. Press the button two times to scan for available frequencies. Press the button three time to manually set the frequency. Press the **SET A** button and the **A▲** button at the same time to lock or unlock the front panel controls for Channel A.
4. **B SET:** **SET** button for Channel B. Press the button one time to initiate IR synchronization. Press the button two times to scan for available frequencies. Press the button three time to manually set the frequency. Press the **SET B** button and the **B▲** button at the same time to lock or unlock the front panel controls for Channel B.
5. **B▲/▼:** **Up** and **Down** buttons for Channel B. Momentarily press either button to increase or decrease the volume level. Press the

SET B button and the **B▲** button at the same time to lock or unlock the front panel controls for Channel B.

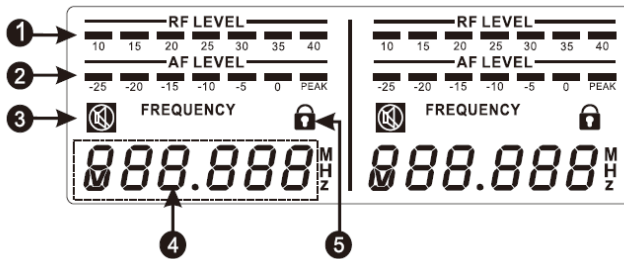
6. **POWER:** Momentarily press the **POWER** button to turn the Receiver on. Press and hold the **POWER** button for 2 seconds to turn the Receiver off.

Receiver Rear Panel



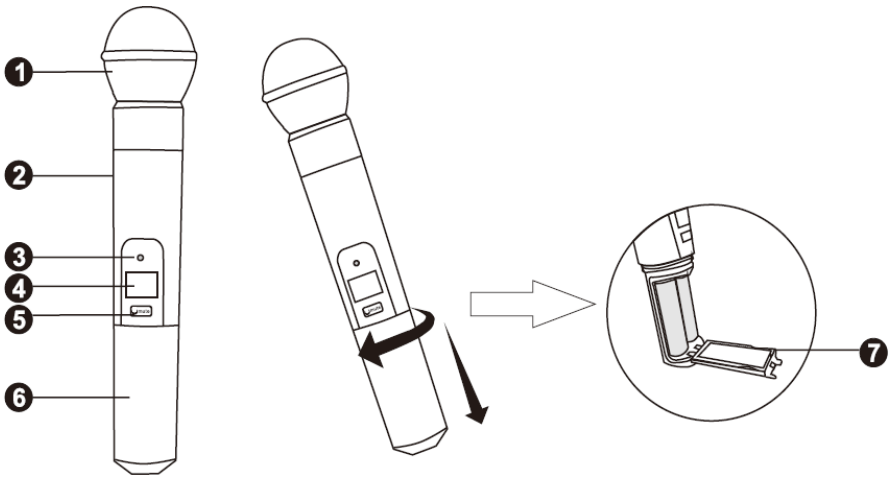
7. **ANT B/ANT A:** Antenna BNC connector for Channel B and Channel A.
8. **BALANCED B/BALANCED A:** The XLR jacks output a balanced signal for Channel B and Channel A.
9. **MIX OUT:** The 1/4" TRS jack outputs an unbalanced signal with a mix of Channel A and Channel B.
10. **DC INPUT:** DC barrel connector for connecting the included AC power adapter.

Receiver Display



1. **RF LEVEL:** The meter displays the strength of the RF signal from the Handheld Microphone (600059 only) or the Bodypack Transmitter (600060 and 600061 only).
2. **AF LEVEL:** The meter displays the audio signal level in decibels (dB). The loudest signals should hit the **0** element. If the **PEAK** element illuminates, the signal is being distorted and the volume level should be reduced using the ▲/▼ buttons on the Receiver.
3. **MUTE:** The output of the Handheld Microphone (600059 only) or the Bodypack Transmitter (600060 and 600061 only) is muted when the icon is displayed.
4. **FREQUENCY:** Displays the frequency being used to communicate with the Handheld Microphone (600059 only) or the Bodypack Transmitter (600060 and 600061 only).
5. **LOCK:** All settings are locked when the icon is displayed.

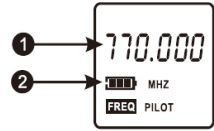
Handheld Microphone (600059 only)



1. **Microphone Head**
2. **Microphone Body**
3. **IR:** IR interface.
4. **Display**
5. **Power/Mute Button:** Momentarily press the button to turn the Handheld Microphone on or off. Press and hold the button for several seconds to turn **MUTE** on or off.
6. **Battery Cover:** Unscrew the cover and remove it to access the battery compartment.
7. **Battery Compartment Cover:** Open the cover to access the **Battery Compartment**.

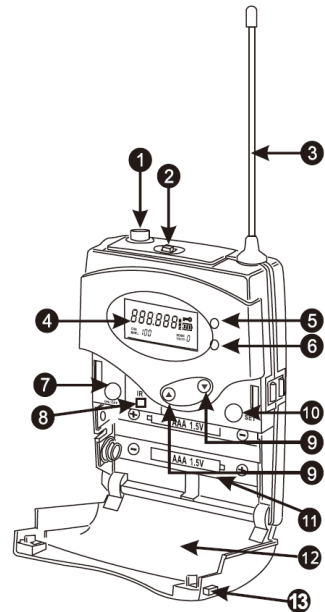
Handheld Microphone Display (600059 only)

1. **Frequency:** Displays the frequency being used to connect to the Receiver.
2. **Battery:** Displays the battery charge level.



Bodypack Transmitter (600060 and 600061 only)

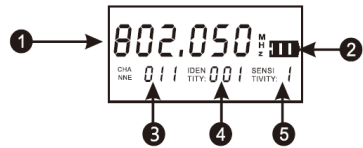
1. **MIC/LINE:** 3.5mm jack for connecting the microphone.
2. **MUTE:** Slide the switch to turn audio mute on or off.
3. **Antenna**
4. **Display**
5. **Power LED:** Illuminates green when the Bodypack Transmitter is powered on.
6. **Battery Level LED:** Illuminates red when the battery level is low.
7. **Power Button:** Press the button to turn the Bodypack Transmitter on or off.
8. **I.R.:** IR interface.
9. **▲/▼:** Up and Down rocker button.
10. **SET Button**
11. **Battery Compartment**



12. **Battery Compartment Cover**
13. **Battery Compartment Cover Release Buttons:** Press the buttons on each side of the **Battery Compartment Cover** to open it.

Bodypack Transmitter Display (600060 and 600061 only)

1. **Frequency:** Displays the frequency used to connect to the Receiver.
2. **Battery:** Displays the battery charge level.
3. **Channel:** Displays the **Channel** used to connect to the receiver.
4. **Identity:** Displays the **ID** used to identify the Bodypack Transmitter.
5. **Sensitivity:** The **Sensitivity** is set at the factory and cannot be changed.



SETUP AND OPERATION

Receiver

1. Place receiver in a location close to where the performance will take place. Ensure that it is at least 5 feet (1.5 meters) from any large metal objects or wall/ceiling structure to ensure a strong RF signal.
2. Connect the two antennas to the **ANT A** and **ANT B** connectors on the rear panel.

3. Plug one end of the included **AC Power Adapter** into the **DC INPUT** jack on the rear panel, then plug the other end into a nearby AC power outlet.
4. Momentarily press the **POWER** button to turn the Receiver on.

Handheld Microphones

Perform the following steps for each Handheld Microphone to prepare it for use.

1. Turn the **Battery Cover** counterclockwise to unscrew it, then pull it off the Microphone Body.
2. Press the latch on the **Battery Compartment Cover** to open it to reveal the **Battery Compartment**.
3. Install two AA batteries (available separately) into the **Battery Compartment**. Take care to match the polarity on the batteries with the polarity markings in the **Battery Compartment**.
4. Close the **Battery Compartment Cover**.
5. Slide the **Battery Cover** onto the **Microphone Body**, then turn it clockwise to screw it into place.
6. Momentarily press the **POWER/MUTE Button** to turn the Handheld Microphone on.

Bodypack Transmitters

Perform the following steps for each Bodypack Transmitter to prepare it for use.

1. Press the two **Battery Compartment Cover Release Buttons** on each side of the **Battery Compartment Cover** to open it.
2. Install two AA batteries (available separately) into the **Battery Compartment**. Take care to match the polarity on the batteries with the polarity markings in the **Battery Compartment**.
3. Plug the included **Headset Microphone** (600060 only) or **Lavalier Microphone** (600061 only) into the **MIC/LINE** jack on the Bodypack Transmitter.
4. While the **Battery Compartment Cover** is open, momentarily press the **Power Button** to turn the Bodypack Transmitter on. Note that the **Power Button**, **I.R.** interface, and **SET Button** are under the **Battery Compartment Cover** when it is closed.

Manually Setting the Receiver Frequency

You can manually set the frequency used to communicate with the Handheld Microphone or Bodypack Transmitter, or you can automatically scan for an available frequency. The latter is useful when using multiple Receivers. Perform the following steps to manually set the frequency.

1. If the Receiver is not already powered on, momentarily press the **POWER** button to turn it on.
2. Press the **SET** button three times. The **FREQUENCY** display will start flashing.

3. Use the ▲/▼ buttons to change the displayed **FREQUENCY**.
4. When the desired **FREQUENCY** is displayed, press the **SET** button to save the displayed **FREQUENCY**. The **FREQUENCY** display will stop flashing.

Automatically Setting the Receiver Frequency

You can manually set the frequency used to communicate with the Handheld Microphone or Bodypack Transmitter, or you can automatically scan for an available frequency. The latter is useful when using multiple Receivers. Perform the following steps to automatically set the frequency.

1. If the Receiver is not already powered on, momentarily press the **POWER** button to turn it on.
2. Press the **SET** button two times. The **FREQUENCY** display will change to show **SC.An**.
3. Press the ▲ button start scanning for an available frequency.
4. When an available frequency is found, the display will change to show the **FREQUENCY** flashing. Either press the **SET** button to save the displayed **FREQUENCY** or press the ▲ button again to continue scanning. When the **FREQUENCY** is saved, the **FREQUENCY** display will stop flashing.

Manually Setting the Bodypack Transmitter Frequency

As with the Receiver, you can either manually set the frequency used to communicate with the Receiver or configure it automatically by synchronizing the Receiver with the Transmitter. Perform the following steps to manually set the frequency.

1. If you have not already set the frequency on the Receiver, perform the steps in the *Manually Setting the Receiver Frequency* or *Automatically Setting the Receiver Frequency* section above before setting the frequency on the Bodypack Transmitter.
2. Press the two **Battery Compartment Cover Release Buttons** on each side of the **Battery Compartment Cover** to open it.
3. If the Bodypack Transmitter is not already powered on, momentarily press the **Power Button** to turn it on.
4. Press the **SET** button on the Bodypack Transmitter one time. The displayed **Frequency** will start flashing.
5. Use the **▲/▼ Button** to change the displayed **Frequency**. Ensure that you set it to the same frequency displayed on the Receiver.
6. Press the **SET Button** to save the displayed **Frequency** setting.
7. Press the **SET Button** on the Bodypack Transmitter two times. The **Identity** on the **Display** will start flashing.
8. Use the **▲/▼ Button** to change the displayed **Identity**.
9. Press the **SET Button** to save the displayed **Identity** setting.

Synchronizing the Handheld Microphone with the Receiver

Rather than manually setting the frequency used to communicate with the Receiver, you can synchronize the Handheld Microphone with the Receiver's frequency using the **I.R.** interface.

1. If you have not already set the frequency on the Receiver, perform the steps in the *Manually Setting the Receiver Frequency* or *Automatically Setting the Receiver Frequency* section above before synchronizing the frequency.
2. If it is not already powered on, momentarily press the **Power/Mute Button** on the Handheld Microphone to turn it on.
3. Press the **SET** button on the Receiver. The **FREQUENCY** display will show **IR.--**.
4. Position the **I.R.** interface on the Handheld Microphone in front of the **I.R.** interface on the Receiver to begin synchronization.
5. When synchronization is complete, the **FREQUENCY** display on the Receiver will change to display the **FREQUENCY** in use.

Synchronizing the Bodypack Transmitter with the Receiver

Rather than manually setting the frequency used to communicate with the Receiver, you can synchronize the Bodypack Transmitter with the Receiver's frequency using the **I.R.** interface.

1. If you have not already set the frequency on the Receiver, perform the steps in the *Manually Setting the Receiver Frequency* or *Automatically Setting the Receiver Frequency* section above before synchronizing the frequency.

2. Press the two **Battery Compartment Cover Release Buttons** on each side of the **Battery Compartment Cover** to open it.
3. Press the **SET** button on the Receiver. The **FREQUENCY** display will show **IR.--**.
4. Position the **I.R.** interface on the Bodypack Transmitter in front of the **I.R.** interface on the Receiver to begin synchronization.
5. When synchronization is complete, the **FREQUENCY** display on the Receiver will change to display the **FREQUENCY** in use.

Control Lock

- Press the **SET A** Button and the **A▲** button on the Receiver at the same time to lock or unlock the front panel controls for Channel A. The **LOCK** icon will show on the **A Display** when the controls for Channel A are locked
- Press the **SET B** button and the **B▲** button on the Receiver at the same time to lock or unlock the front panel controls for Channel B. The **LOCK** icon will show on the **B Display** when the controls for Channel B are locked.

TECHNICAL SUPPORT

Monoprice is pleased to provide free, live, online technical support to assist you with any questions you may have about installation, setup, troubleshooting, or product recommendations. If you ever need assistance with your new product, please come online to talk to one of our friendly and knowledgeable Tech Support Associates. Technical support is available through the online chat button on our website www.monoprice.com or through email by sending a message to tech@monoprice.com. Check the website for support times and links.

To download the latest drivers, firmware, manuals, etc., go to www.monoprice.com and type the **P/N** into the search bar. If available, support files are linked at the bottom of the product page.

SPECIFICATIONS

Receiver

Frequency Range	590 ~ 890 MHz
Channel Number	100 frequencies
Bandwidth	30MHz
Oscillation Mode	PLL frequency synthesis
Frequency Stability	±10ppm
RF Sensitivity	-95 ~ -60 dBm
Audio Frequency Response	60Hz ~ 15kHz
Total Harmonic Distortion	≤ 0.5%

Signal-to-Noise Ratio	$\geq 150\text{dBA}$
Audio Outputs	2x XLR (balanced), 1x TRS (unbalanced)
Receiving Distance	about 262 feet (80 meters)
Input Power	12 ~ 24 VDC, 1A
AC Adapter Input Power	100 ~ 240 VAC, 50/60 Hz
Maximum Power Consumption	≤ 8 watts

Handheld Microphone/Bodypack Transmitter

Frequency Range	590 ~ 890 MHz
Receiving Frequencies	200 frequencies
Frequency Stability	$\pm 100\text{ppm}$
Modulation	Wideband FM
Radio Frequency Power	≤ 10 milliwatts
Audio Frequency Response	60Hz ~ 15kHz
Total Harmonic Distortion	$\leq 0.5\%$
Input Power	2x AA batteries (available separately)

REGULATORY COMPLIANCE

Notice for FCC



This device complies with Part 15 of the FCC rules. Operation is subject to the following two conditions: (1) this device may not cause harmful interference, and (2) this device must accept any interference received, including interference that may cause undesired operation.

Modifying the equipment without Monoprice's authorization may result in the equipment no longer complying with FCC requirements for Class B digital devices. In that event, your right to use the equipment may be limited by FCC regulations, and you may be required to correct any interference to radio or television communications at your own expense.

This equipment has been tested and found to comply with the limits for a Class B digital device, pursuant to Part 15 of the FCC Rules. These limits are designed to provide reasonable protection against harmful interference in a residential installation. This equipment generates, uses and can radiate radio frequency energy and, if not installed and used in accordance with the instructions, may cause harmful interference to radio communications. However, there is no guarantee that interference will not occur in a particular installation. If this equipment does cause harmful interference to radio or television reception, which can be determined by turning the equipment off and on, the user is encouraged to try to correct the interference by one or more of the following measures:

- Reorient or relocate the receiving antenna.
- Increase the separation between the equipment and receiver.

- Connect the equipment into an outlet on a circuit different from that to which the receiver is connected.
- Consult the dealer or an experienced radio/TV technician for help.

Radio Notice for FCC

Caution

This FCC Part 15 radio device operates on a non-interference basis with other devices operating at this frequency. Any changes or modification to said product not expressly approved by Monoprice, including the use of non-approved antennas, could void the user's authority to operate this device.

This device complies with Part 15 of the FCC Rules. Operation is subject to the following two conditions: (1) this device may not cause harmful interference, and (2) this device must accept any interference received, including interference that may cause undesired operation.

Monoprice™, Stage Right™, the Stage Right logo, and all Monoprice logos are trademarks of Monoprice Inc.