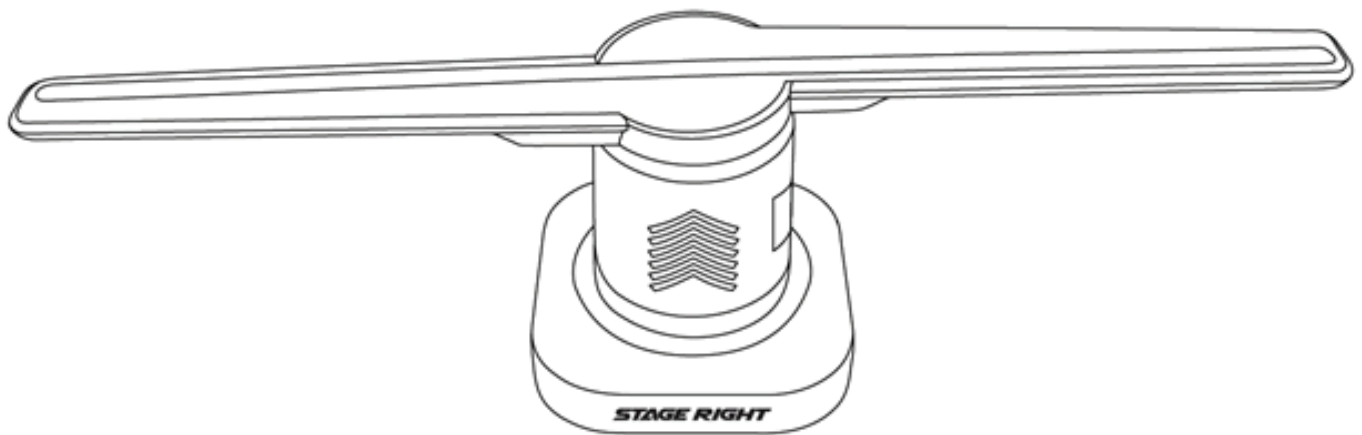


# ***STAGE RIGHT***

Stage Right by Monoprice Hologram 3D Display



P/N 612650

## SAFETY WARNINGS AND GUIDELINES

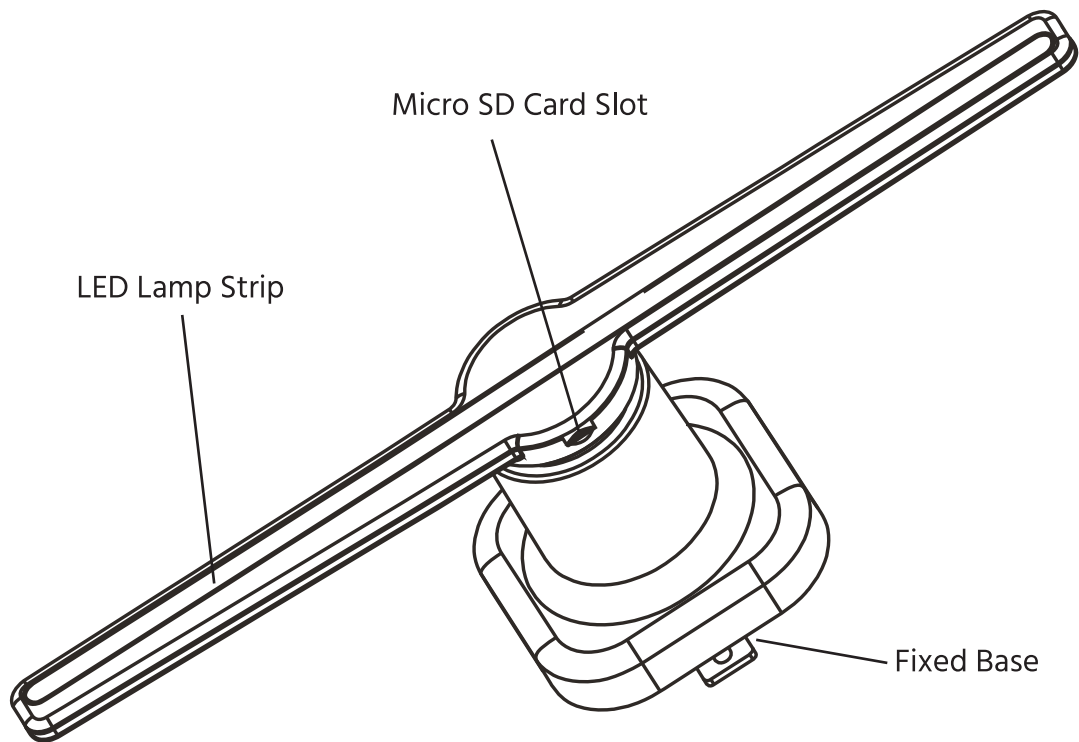
Please read this entire manual before using this device, paying extra attention to these safety warnings and guidelines. Please keep this manual in a safe place for future reference.

- Fan blades spin at 2000 RPM; keep hands, fingers, and objects away from spinning blades to avoid serious injury or damage to the Hologram Display or other property.
- This product must be mounted where the lowest point of the blades is no less than 8' (2.44m) from the floor.
- **WARNING:** Installation work and electrical wiring must be done by qualified person(s) in accordance with all applicable codes and standards, including fire-rated construction.
- **CAUTION:** Exercise caution and common sense when powering the fan. Do not connect the fan to a damaged or hazardous power source. Do not attempt to resolve electrical malfunctions or failures on your own. Contact Monoprice if you have any questions regarding the electrical installation of this product.
- Be sure no objects come within 24" (609.6mm) of any part of this product.
- Not for use by persons under the age of 18
- This device is intended for indoor use only. Failure to comply may invalidate your warranty, result in personal or property damage
- Do not expose this device to water or moisture of any kind. If moisture does get in or on the device, immediately unplug it from the power outlet and allow it to fully dry before reapplying power.
- Do not touch the device, the power cord, or any other connected cables with wet hands.
- Do not expose this device to excessively high temperatures. Do not place it in, on, or near heat sources, such as a fireplace, stove, radiator, etc. Do not leave it in direct sunlight.
- This device ventilates excessive heat through the slots and openings in the case. Do not block or cover these openings. Ensure that the device is in an open area where it can get sufficient airflow to keep from overheating.
- Prior to operation, check the unit and power cord for physical damage. Do not use if physical damage has occurred.
- Take care to prevent damage to the power cord. Do not allow it to become crimped, pinched, walked on, or become tangled with other cords. Ensure that the power cord does not present a tripping hazard.
- Ensure that power is turned off and disconnected before making any electrical connections.
- Clean using a soft, dry cloth only. Do not use chemical cleaners, solvents, or detergents. For stubborn deposits, moisten the cloth with warm water.
- This device has no user serviceable parts. Do not attempt to open, service, or modify this device.

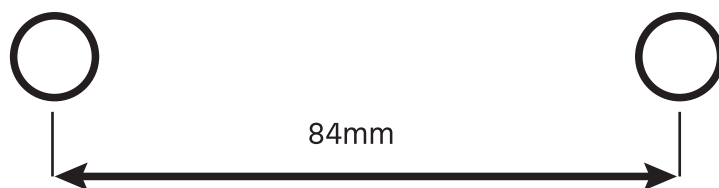
## CUSTOMER SERVICE

The Monoprice Customer Service department is dedicated to ensuring that your ordering, purchasing, and delivery experience is second to none. If you have any problem with your order, please give us an opportunity to make it right. You can contact a Monoprice Customer Service representative through the Live Chat link on our website [www.monoprice.com](http://www.monoprice.com) during normal business hours (Mon-Fri: 5am-7pm PT, Sat-Sun: 9am-6pm PT) or via email at [support@monoprice.com](mailto:support@monoprice.com)

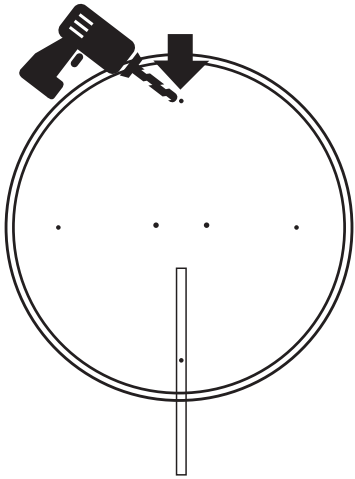
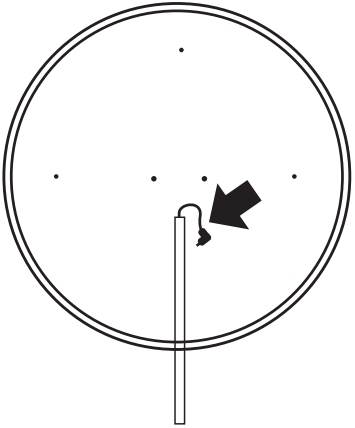
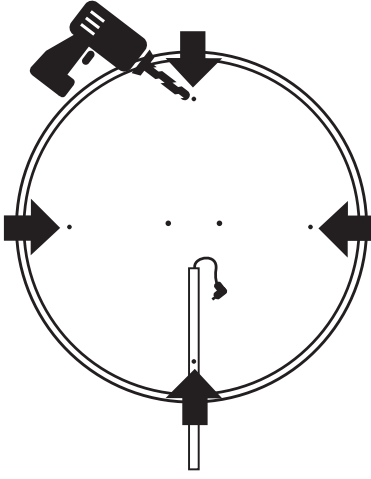
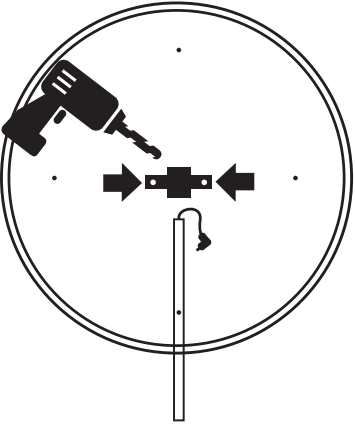
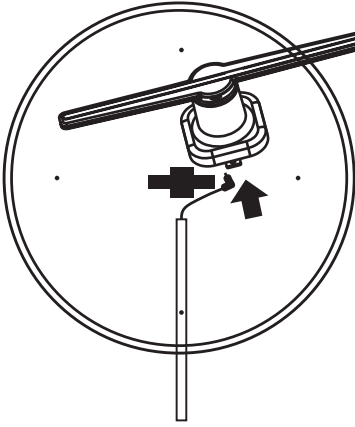
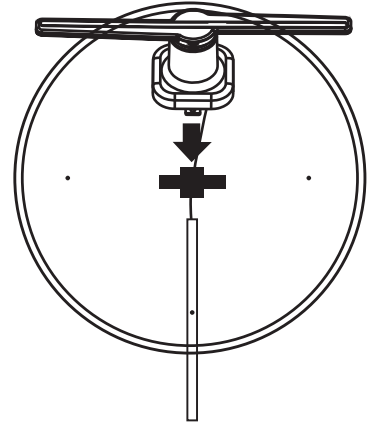
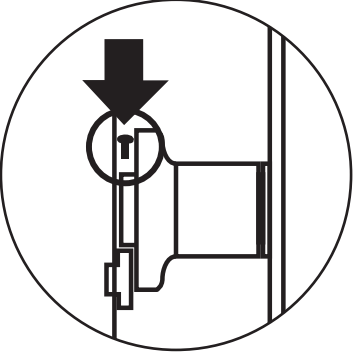
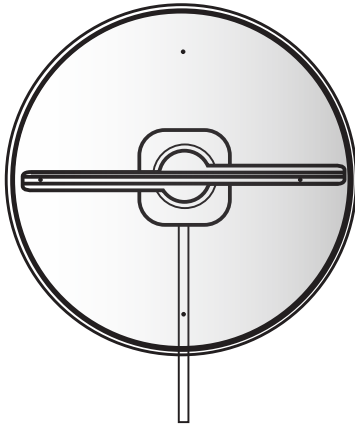
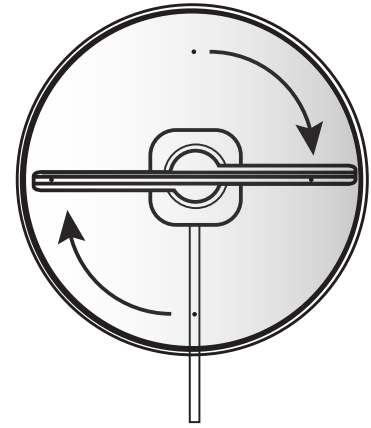
## PRODUCT OVERVIEW



Set 2 fixed holes in the target installation area 84mm apart with a diameter of 6mm each.



**P/N 612651 - STAGE RIGHT HOLOGRAM 3D DISPLAY PROTECTIVE COVER**  
(Sold Separately)

<p>1. Position a single screw on the base plate.</p> 	<p>2. Position the power cable.</p> 	<p>3. Install and tighten remaining screws.</p> 
<p>4. Install the fan's fixed base.</p> 	<p>5. Connect the power cable.</p> 	<p>6. Attach the fan to the fixed base.</p> 
<p>7. Secure the fan in place with the included set screw.</p> 	<p>8. Attach the cover.</p> 	<p>9. Power on the fan.</p> 

**Thank you for purchasing this Hologram Display!**

**Before using the software please read these instructions for how best to prepare your videos or images.**

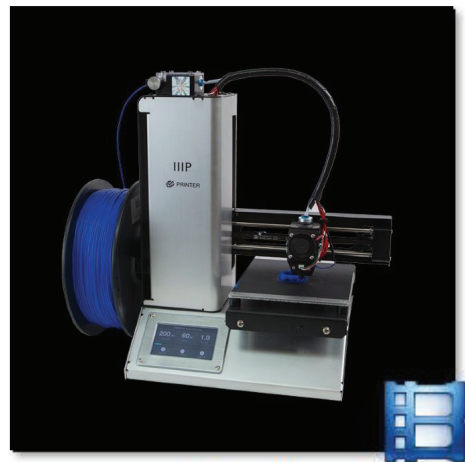
The best files will have all or most of the following characteristics:

- 1) Pure Black Background
- 2) MP4, AVI, Rmvb, or GIF file formats for videos
- 3) JPG or PNG file formats for still images
- 4) 445 x 445 dpi
- 5) 10-15 sec. video length

**Example Files:**



Guitar.jpeg

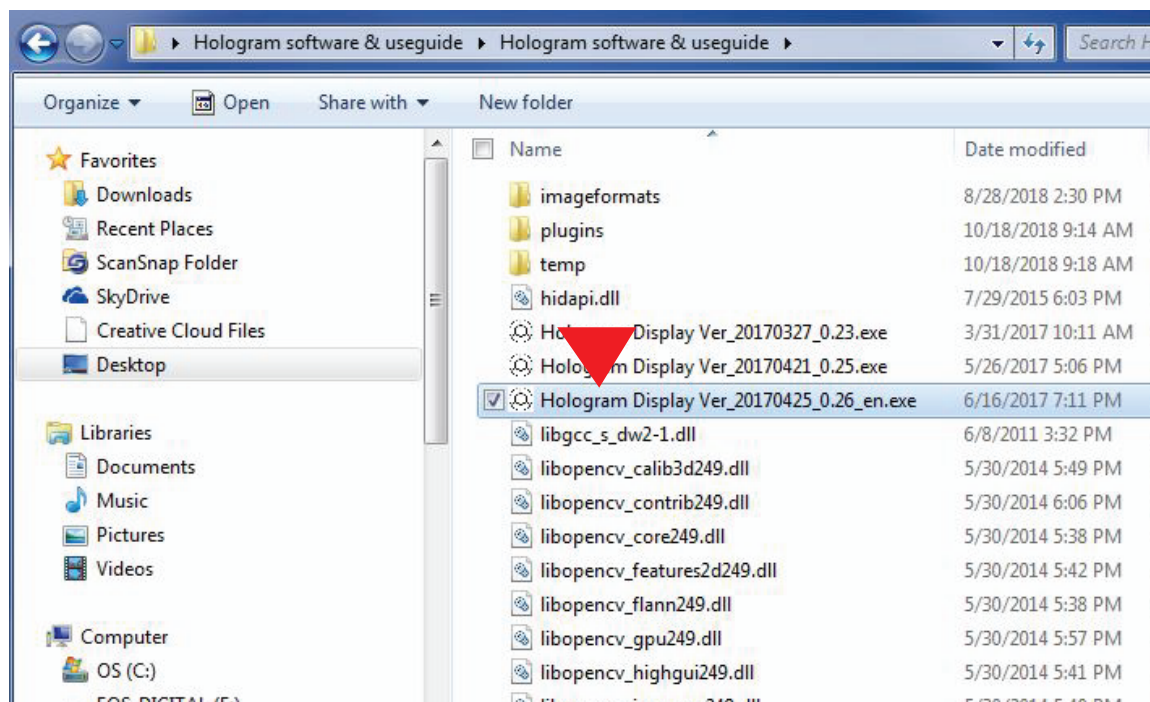


3DPrinterRotate.mp4

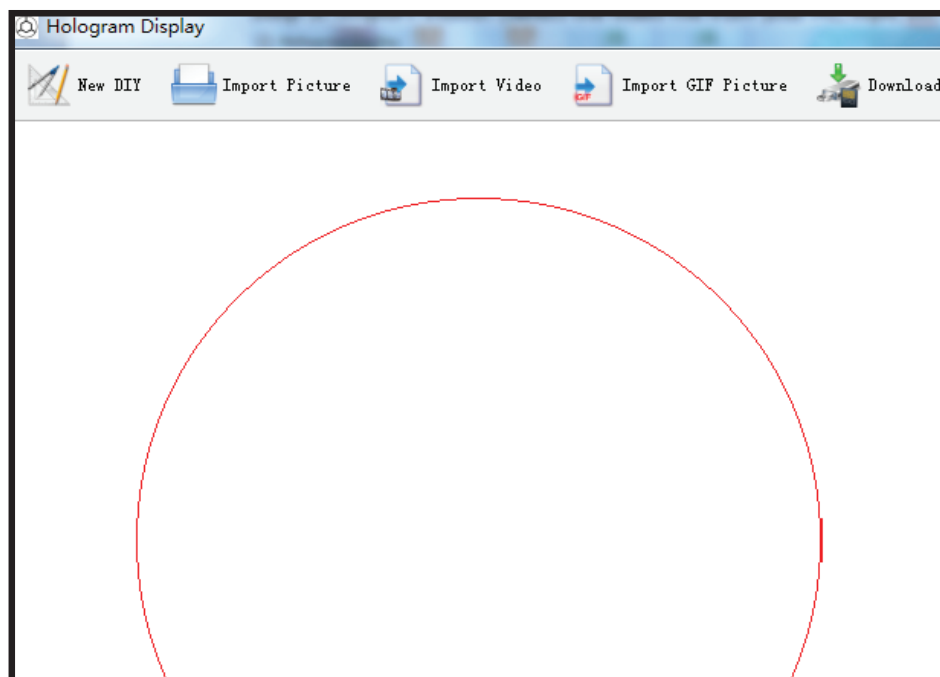
## Hologram Software

Step 1: Insert the included microSD card into the included adapter, then insert the adapter into a USB port on your computer. On your computer, navigate to the "Hologram software & useguide" folder. Then Copy and Paste the entire folder to your Desktop or to a different drive from the one the microSD card is inserted to.

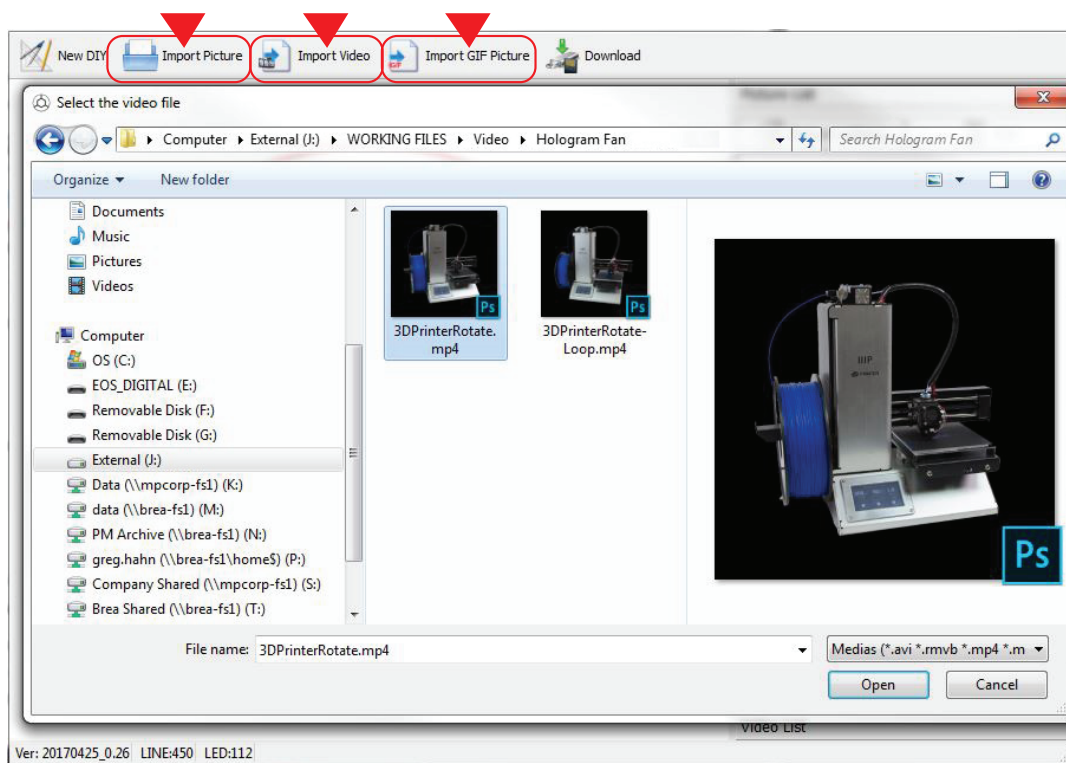
Step 2: Open and install the .exe file from within the folder that you copied to your desktop or the location you copied it to. It may take up to 1 minute for the interface to load.



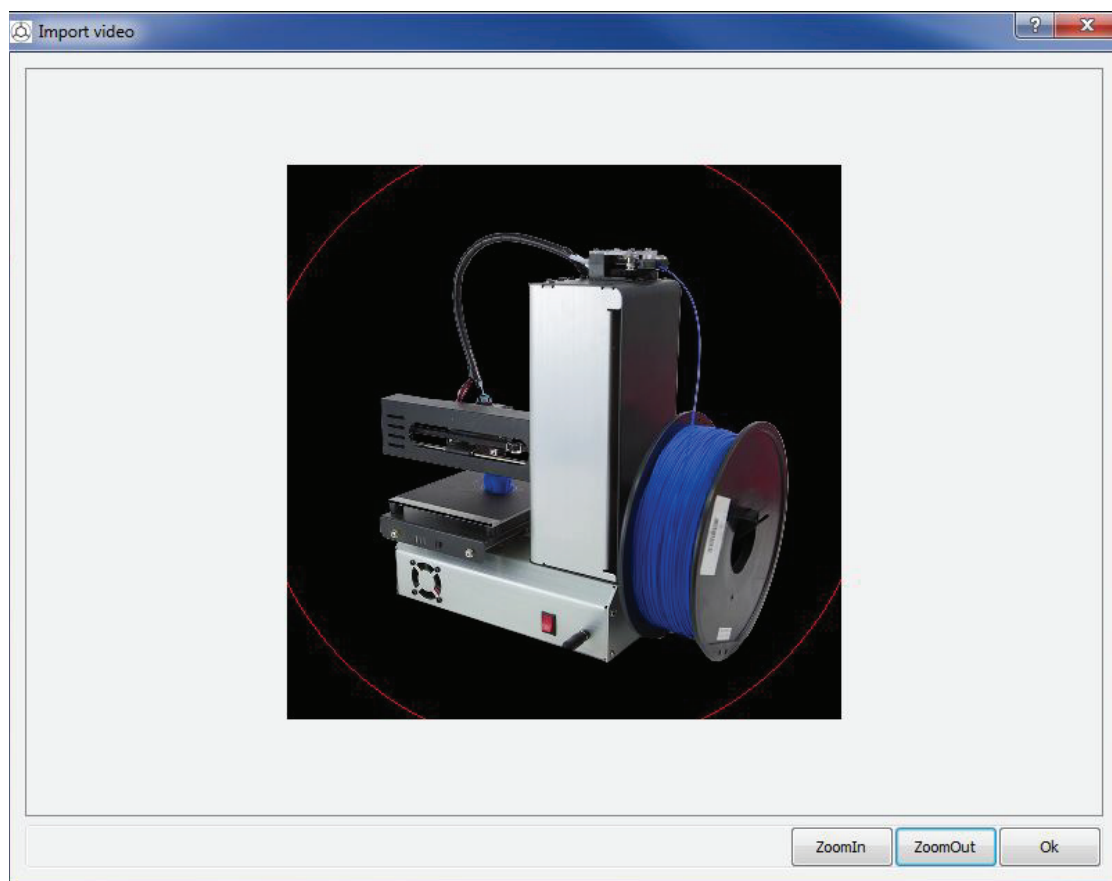
The User Interface will appear as shown below



Step 3: Click the desired Import Tab for the video or picture file from your PC, then select your file and click “Open.”

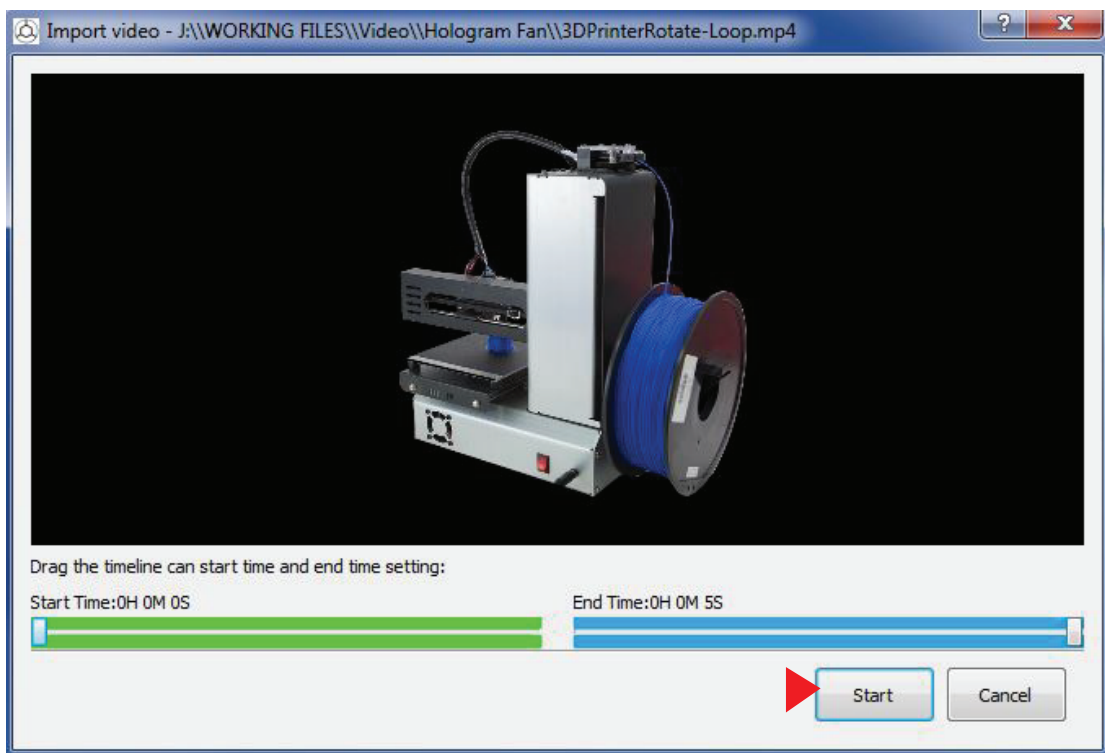


Step 4: Crop the video using the “Zoom In” and “Zoom Out” buttons to fit how desired within the red circle. The area beyond the circle will not be shown on the Hologram Display.

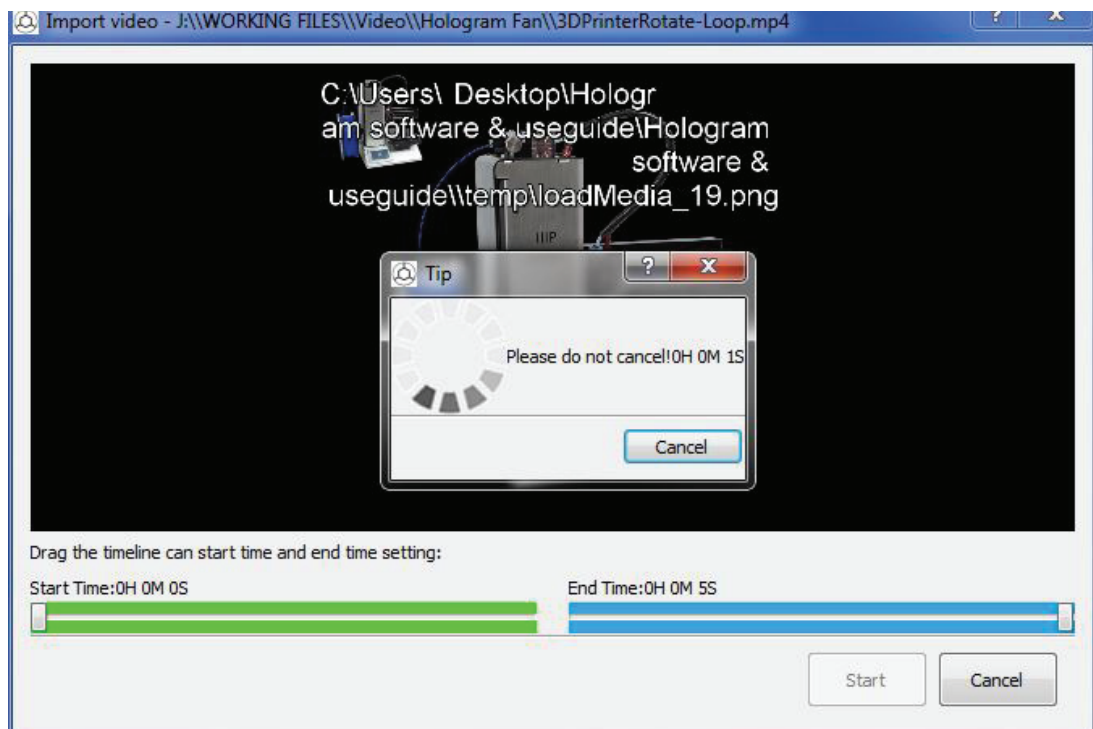




Step 5: Click the "Start" button to begin the reformatting process.

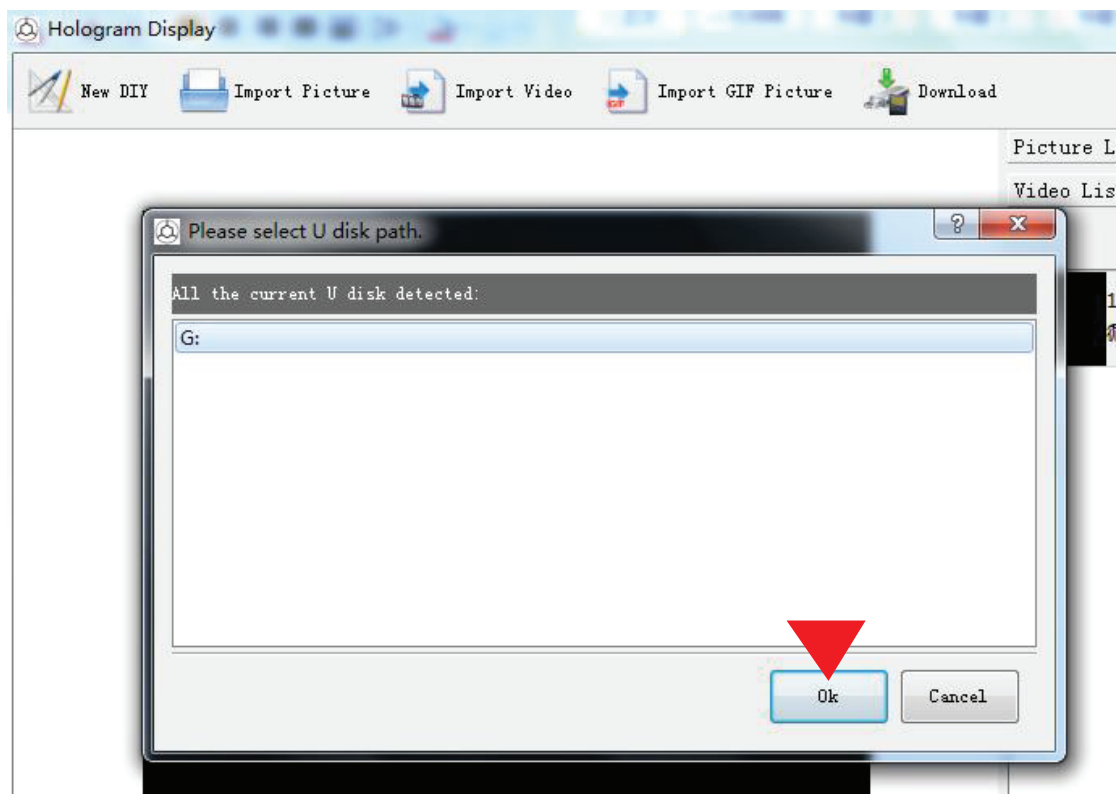
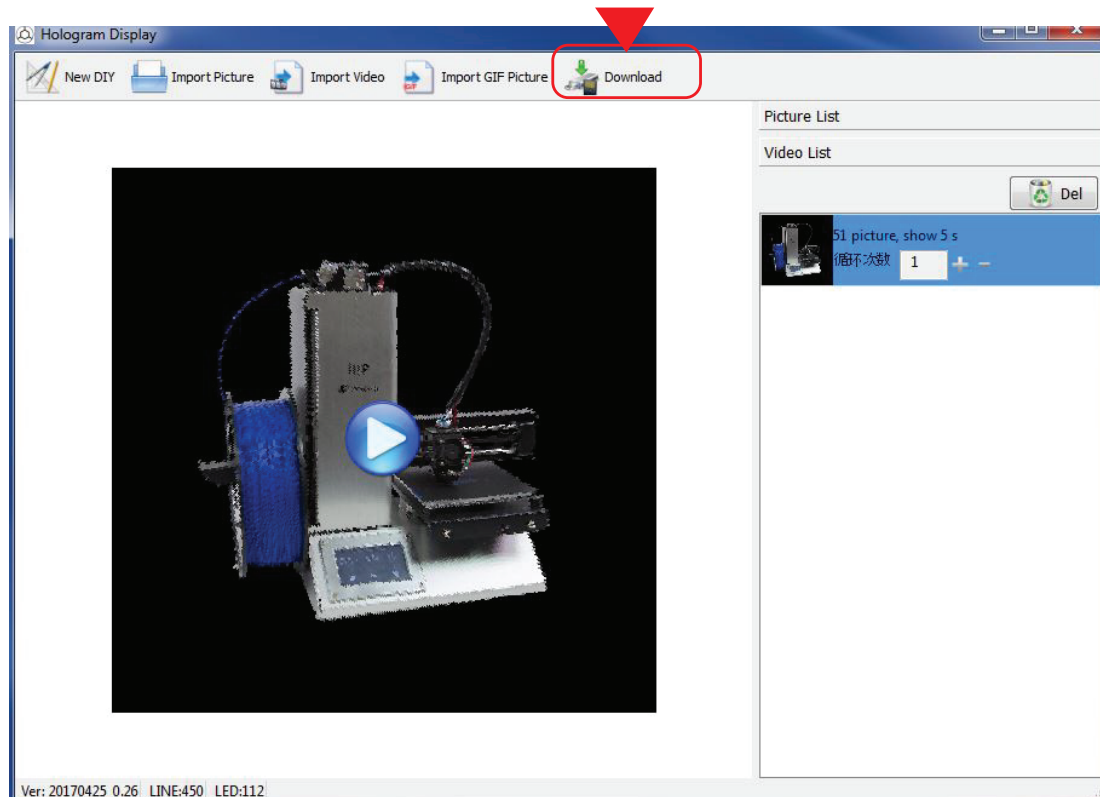


Step 6: Wait for the process to complete. The file will be converted into individual pngs at 10fps. (5 second video = 50 frames/pngs)



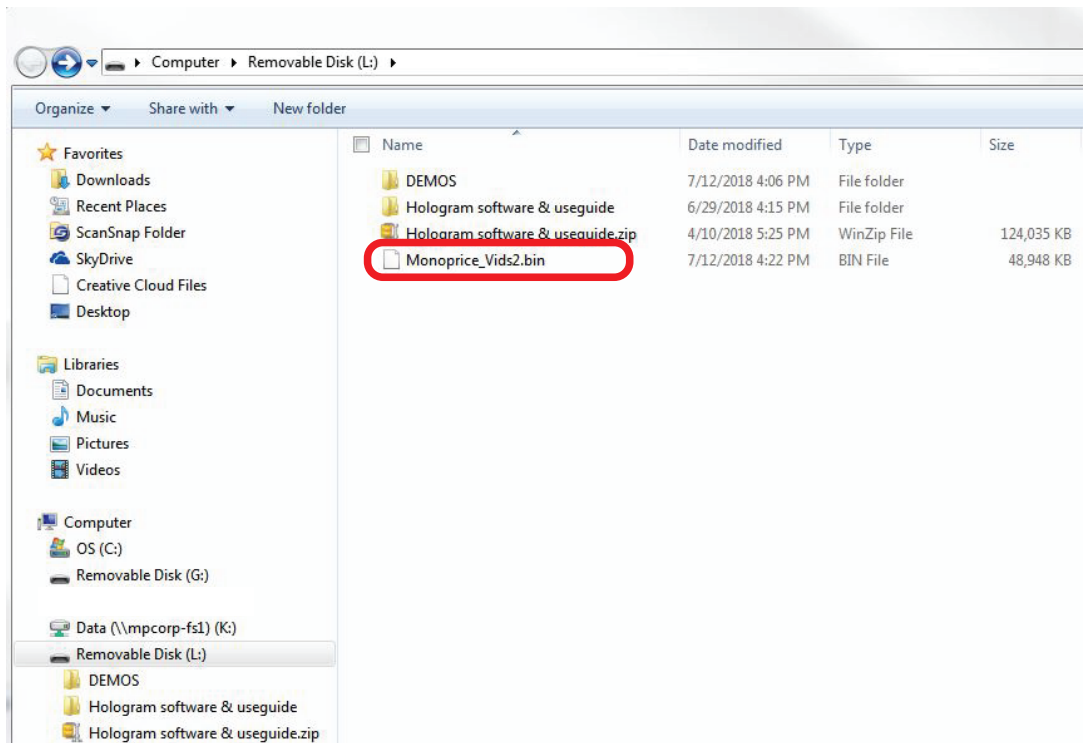
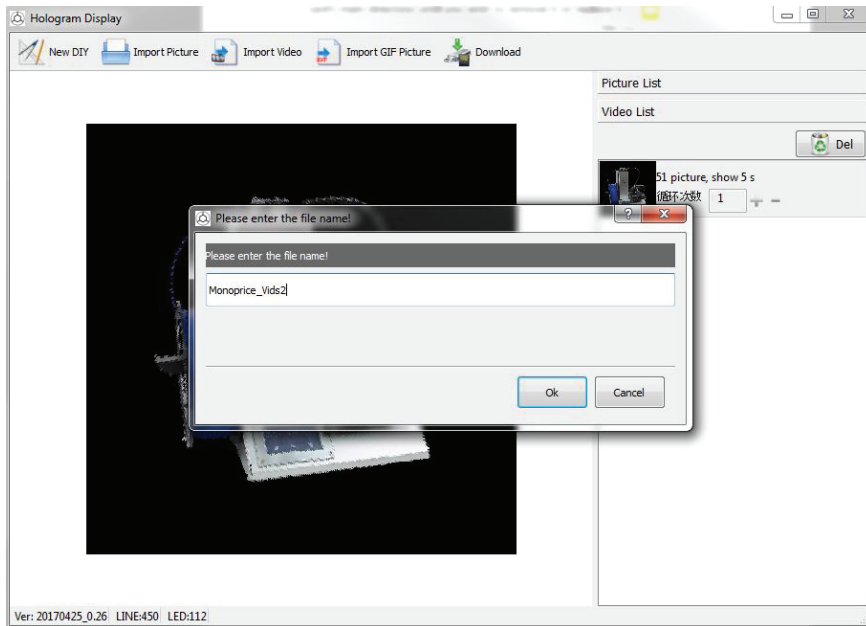


Step 7: Transfer the file to the microSD card. Click the “Download” button and then select the appropriate drive where your microSD card is located. We recommend downloading a single video at a time as this makes it possible to reorder the videos even after downloading as a .bin file. If you select multiple imported videos they will download as a single .bin file.



\*The displayed available drives will vary from computer to computer dependant upon applicable installed drives and/or disk space.

Step 8: Name your file. The downloaded file will appear as a “.bin” file on the card. **WARNING: DO NOT** place this file in any sub folders on the microSD card as the Hologram Display will not read it. Please leave the .bin file in the microSD card’s main directory until you wish to remove it or replace it. The downloaded .bin files will play in Alpha-numerical order.



## Saving/Playing Multiple Videos

Repeat Steps 3-8 with additional video/picture files to add more .bin files to the microSD card. The Hologram Display will play the files in alphabetical/numerical order, so rename your files accordingly to get them to play in the order desired.

## Removing the Demo Video Content

Existing .bin files can be safely deleted from the microSD card. These files are for demonstrative purposes only and are not essential to the operation of the device.