

Tablet and Digital Pen Device



Wired Tablet (Wired Media Tablet)
Wireless Tablet (Media Wireless Tablet)
User Manual

Windows 7 / Vista / XP

Driver Version 5.02

Contents

Chapter 1 General information	1-1
1 Overview.....	1-1
2 Tablet functions.....	1-1
3 System requirements.....	1-1
4 Driver installations.....	1-1
5 Hardware installations	1-1
5.1 Wired Tablet (Wired Media Tablet) installation.....	1-1
5.2 Wireless Tablet (Media Wireless Tablet) installation.....	1-1
6 Verifying Hardware and driver function.....	1-2
6.1 For Wired Tablet (Wired Media Tablet).....	1-2
6.2 For Wireless Tablet (Media Wireless Tablet).....	1-3
7 Usage Tips.....	1-4
7.1 Wake up Digital Mouse.....	1-4
7.2 Wake up Digital Pen.....	1-4
7.3 Double Tapping for Digital Pen.....	1-4
7.4 Storing the digital pen	1-4
7.5 Scrolling function of digital pen.....	1-4
7.6 Using a pen without an ordinary mouse.....	1-4
8 Wireless Tablet (Media Wireless Tablet) introduction.....	1-4
9 Mapping To Multiple Monitors.....	1-5
Chapter 2 Pen tablet configuration.....	2-1
1 The Info Tab.....	2-1
2 The Button Tab.....	2-1
2.1 Button Name.....	2-1
2.2 Double Click Time.....	2-2
2.3 Default.....	2-2
3 Express Keys.....	2-2
3.1 Default.....	2-2
3.2 Re-define Express keys.....	2-2
3.3 Common.....	2-2
3.4 Mouse.....	2-3
3.5 Multimedia.....	2-3
3.6 Other.....	2-3
3.7 Run.....	2-4
3.8 Internet.....	2-4
3.9 Hot Key.....	2-5

4 The Scope Tab.....	2-5
4.1 Full Area.....	2-5
4.2 Screen Ratio.....	2-5
4.3 Reserve Edges.....	2-6
4.4 Pen Area Dimensions.....	2-6
4.5 Pen Area Offset.....	2-6
4.6 Pen Area.....	2-6
5 Hot Cells define page.....	2-7
5.1 Hot Pad Layout.....	2-7
5.2 Hot Edges.....	2-7
5.3 Print.....	2-7
5.4 Clear.....	2-7
5.5 Define.....	2-7
5.5.1 Define Hot Cell - Run.....	2-7
5.5.2 Define Hot Cell - Internet.....	2-7
5.5.3 Define Hot Cell - Hot Key.....	2-8
5.5.4 Define Hot Cell - Other.....	2-8
5.5.5 Define Hot Cell – Multimedia.....	2-9
5.6 Load Default.....	2-9
6 The Pressure Tab.....	2-9
6.1 Pressure Test.....	2-9
6.2 Clear.....	2-9
6.3 Click Sensitivity.....	2-9
7 The Monitor Setting Tab.....	2-10
7.1 Monitor Mapping.....	2-10

Chapter 3 Storing the Digital pen and changing the Pen Battery & Tip....3-1

Chapter 4 Question & Answer4-1

***The driver may already be updated to a newer version prior to packaging. If your installation screen does not match the content of this manual, please refer to your software screen after installation.**

I. General Information

1. Overview

Welcome to the world of tablet and digital pen! You are able to discover how easy to control your personal computer by using a wireless digital pen to instead of a mouse:

The function of the digital pen is able to draw a line very thin, thick, light or dark (the pressure sensitivity). You also can write, sign, annotate documents, and draw, sketch or paint as easily as you would on normal paper and simulate the functions like pencil, mark pen, brush, or watercolor pen by using the commercial software packages such as Adobe® PhotoShop™, Corel® Painter™ and Paint Shop™. If MSN Messenger 8.5 or newer is installed, the user can freely create and send digital handwritings and hand drawn pictures, making communication much more fun and entertaining.

If you cannot enable handwriting mode in MSN Messenger, please download the relevant handwriting component from Microsoft's website.

2. Pen Tablet Functions

After installing the device driver, your pen tablet features have got the following functions:

1. Direct pointing – You can move the cursor to any location on the screen by hovering the digital pen tip over the tablet's surface.
2. Three-buttons mouse commands - Your pen tablet provides all functions of a three- buttons' mouse by using its pen tip and two buttons.
3. Pen scrolling – You can scroll documents and Web pages by pressing the middle button of the digital pen over the tablet's working area.
4. Pressure sensitivity – This feature allows you to emulate various brushes and pencils and you can press down the pen tip harder, lighter, stronger or thicker, and subtle pencil lines you will receive.

3. System Requirements

- **Windows 7/Vista/XP; USB port; DVD-ROM drive** ◦

4. Installing the Driver Software on Windows

Please follow the installation instructions below for Microsoft Windows 7, Vista and XP operating systems:


1. Place the DVD into the optical disc drive and wait for the main installation screen to appear.
2. The main installation screen should appear automatically, or you can manually start the installation by opening **【My Computer】** ► **【DVD Rom】** ► then click on the **【Setup】** program.
3. When installing the driver, please follow the installation instructions on screen and press the "Enter" key.
After the installation has completed, please reboot the computer.

5. Hardware Installation

5.1 Wired Tablet (Media Wired Tablet) installation:



Connecting a tablet with USB interface into the PC after finished the driver installation and restarted the Windows system:


To connect a pen tablet into the PC, you will see a small tablet icon () appears in the system tray, which is normally at the lower right corner of the screen.

★ **Please install the driver first before plug the tablet into your PC.**

5.2 Wireless Tablet (Media Wireless Tablet) installation:



1. After installing the driver, please restart your computer.
Then connect the dongle to your USB port (as left picture) ◦
2. Put the battery into the back of Wireless Tablet ◦
3. Open Wireless Tablet Power ◦
4. Press Resume button around 4 seconds then your setting will be finished ◦

5. After restart your computer, on bottom right of the screen, you can find the tablet icon () within there.

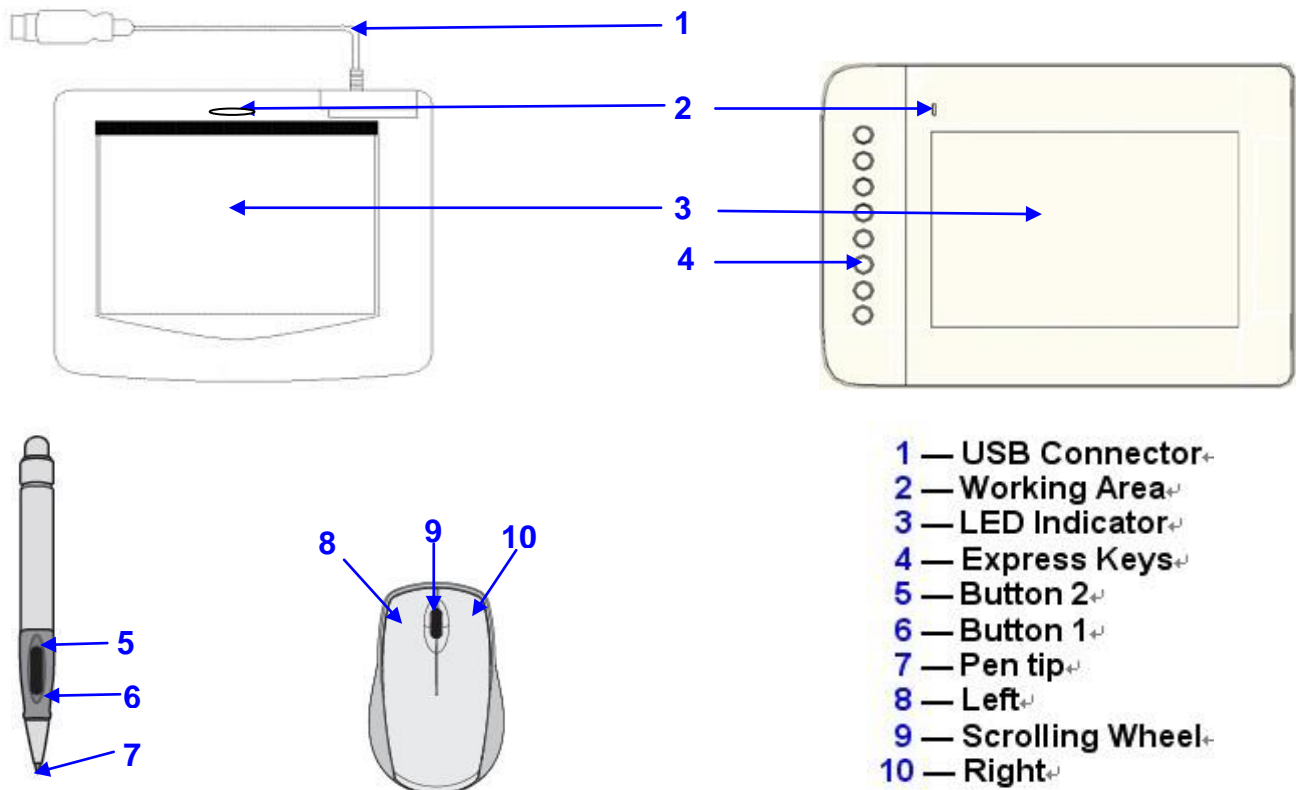
★ **Please install your drive then connect your dongle to the USB port. It will avoid driver installation error or delay while the system is detecting new hardware.**

6. Verifying Hardware and Driver Functions

6.1 Please follow the steps to verify if the wired tablet (Media Wired Tablet) is installed properly :

• Tablet Features and Accessories.

★ **Note:** Product configurations may vary and some may not include all the accessories items.



The green LED light on the tablet is the main indicator for hardware operation and depending on your pen tablet model may be located at a different place that shown in the above diagram. This LED normally stays off, and will only turn it on or off in response to various conditions. Watch the state of the LED on the tablet as you go through these test steps:

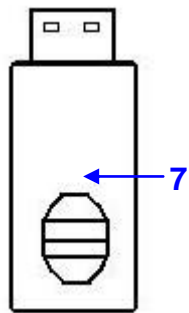
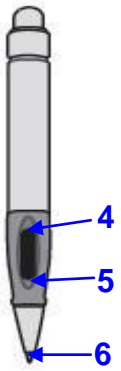
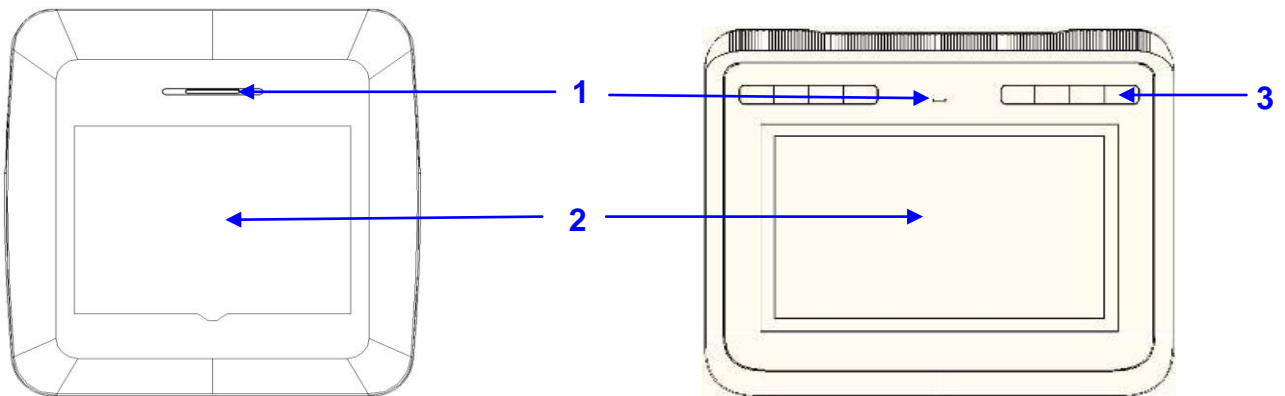
1. Tap on any surface with the tip of the pen, or press the left button of the mouse, to “wake it up” if it has gone into standby mode. A built-in power saving function may have forced the pen or mouse into the standby mode if either of them is not used for a period of time.
2. As soon as the pen tablet itself activates, the LED will be light briefly, and will then go and stay off again.
3. When the tablet detects the presence of the digital pen or mouse, the LED will be blinked slowly. This happens either when pen tip is hovering or placing within the working area which above the tablet.
4. When you press a button on the pen barrel, or click on a mouse button, the LED will be lighted up.
5. Hovering and moving the pen or the mouse in the working area will cause the cursor on the screen to move accordingly.

★ **Note:** After the tablet’s device driver has been properly installed, a small tablet icon (🖊️) will appear in the system tray, which is normally at the lower right corner of the screen.

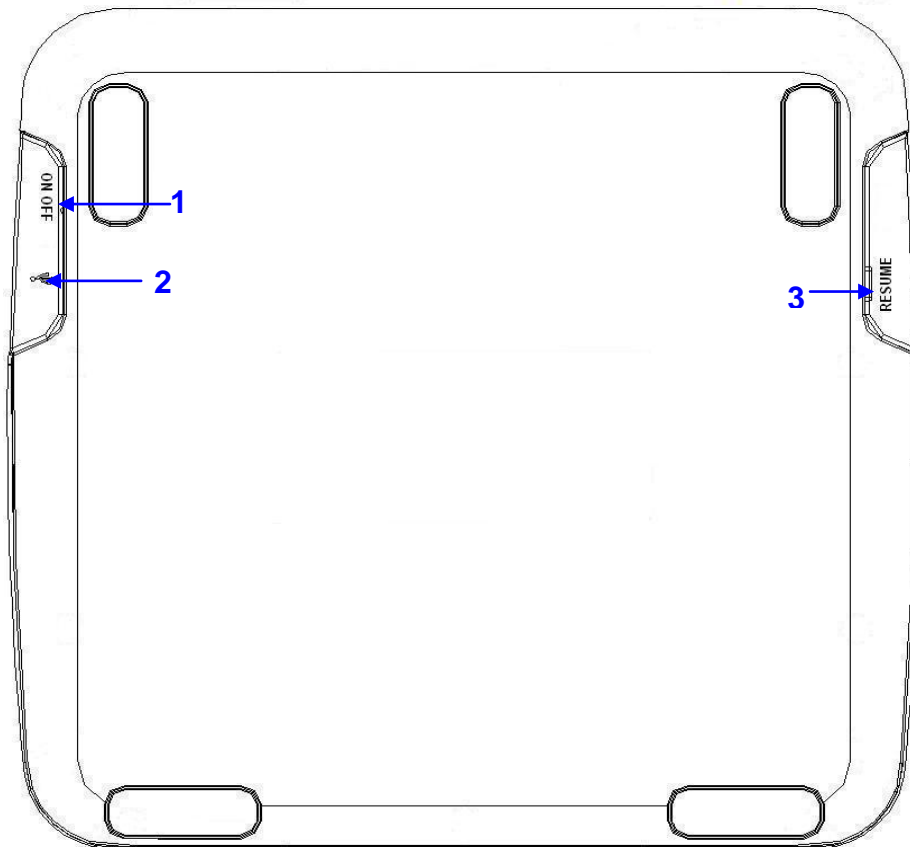
6.2 Please follow the steps to verify if the wireless tablet (Media Wireless Tablet) is installed properly :

• **Tablet Features and Accessories.**

★ **Note:**Product configurations may vary and some may not include all the accessories items.



- 1 — LED Indicator ↵
- 2 — Working Area ↵
- 3 — Express Keys ↵
- 4 — Button 2 ↵
- 5 — Button 1 ↵
- 6 — Pen tip ↵
- 7 — Dongle ↵



- 1 — Power switch
- 2 — USB Port(Only For Power)
- 3 — Resume button

The green LED light on the Wireless tablet is the main indicator for hardware operation and depending on your pen Wireless tablet model may be located at a different place that shown in the above diagram. This LED normally stays off, and will only turn it on or off in response to various conditions. Watch the state of the LED on the Wireless tablet as you go through these test steps:

1. Tap on any surface with the tip of the pen, or press the left button of the mouse, to “wake it up” if it has gone into standby mode. A built-in power saving function may have forced the pen or mouse into the standby mode if either of them is not used for a period of time.
2. As soon as the pen Wireless tablet itself activates, the LED will be light briefly, and will then go and stay off again.
3. When the Wireless tablet detects the presence of the digital pen or mouse, the LED will be blinked slowly. This happens either when pen tip is hovering or placing within the working area which above the Wireless tablet.
4. When you press a button on the pen barrel, or click on a mouse button, the LED will be lighted up.
5. Hovering and moving the pen or the mouse in the working area will cause the cursor on the screen to move accordingly.

★ **Note: After the Wireless tablet’s (Media Wireless Tablet) device driver has been properly installed, a small tablet icon (🖨️) will appear in the system tray, which is normally at the lower right corner of the screen.**

7. Usage Tips

7.1 Wake up the digital mouse from the standby mode

If the digital mouse does not react after you do not use it for a while, press the left button to “wake” it up from the standby mode.

★ **Wireless Tablet (Media Wireless Tablet) can’t support digital mouse ◦**

7.2 Tapping before you use the digital pen

Before you use the digital pen, or after not using it for several minutes, tap the pen on any surface of the tablet to “wake” it up from the standby mode.

7.3 Double tapping

When you double tap with the digital pen (equivalent to a double click with a mouse), try to keep the pen tip away from the tablet’s surface, or at least try to lift the pen tip as fast as possible before the second tap.

7.4 Storing the digital pen

To store the pen, make sure the pen tip does not touch anything, and especially do not let the pen stand in a cup or penholder with the tip down. Even though the possibility is low, press the pen tip will still cause a constant drain on the pen’s battery. Place the pen in a penholder, or turn the pen tip pointing upward or horizontally with the pen tip free of any pressure by other objects.

7.5 Scrolling function of digital pen

The digital pen has the same function of the normal mouse for scrolling pages. Please press the first button of the digital pen (same function as mouse’s middle click) over the tablet’s working area.

7.6 Using a pen without an ordinary mouse

You may install the digital pen, digital mouse, and normal mouse in your computer at the same time and you can also remove them to different computer as well. However, only one device is able to work in the meantime.

★ **Please do not use more than two devices at the same time in case the screen cursor is jittering or not moving.**

★ **Wireless Tablet (Media Wireless Tablet) can’t support digital mouse ◦**

8. Wireless Tablet (Media Wireless Tablet) introduction

The Wireless Tablet is the first of its kind to introduce wireless data transfer, providing a thoughtful design and a maximum working range of 5 meters. The Wireless Tablet is a 2.4GHz wireless solution with multiple channels and automatic channel skipping and assignment. The USB Dongles on both the tablet and PC can communicate bidirectionally, meaning every bit of data that is sent or received is verified to ensure data transfer integrity. Even when there are multiple users, it will be free from channel interference.

9. MAPPING TO MULTIPLE MONITORS



If your computer is equipped with more than one monitor, Tablet will map to the monitors based upon how they are configured in the DISPLAY PROPERTIES control panel.

After you have correctly configured your computer for use with multiple monitors, you can then adjust the tablet mapping by opening the Tablet control panel and changing the appropriate options.

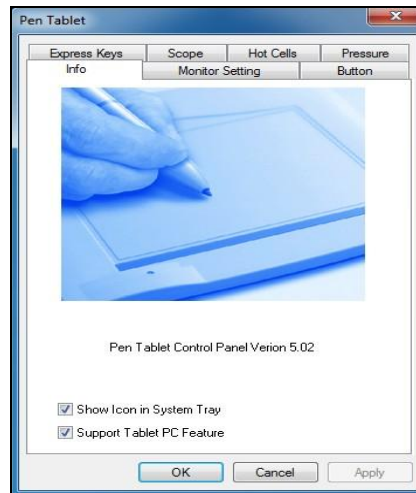
This enables you to toggle the current tablet mapping and screen cursor between the system desktop or primary display and your other monitors.

See working with Display Toggle.


II. Pen tablet configuration

You may configure the pen tablet by modifying the functions of pen tip and the two barrel buttons, tap **[Start] > [Settings] > [Control Panel]**, and double-tap the **[Tablet Setting **] icon, or tap on the tablet icon () in the system tray, usually located at the lower right corner of the screen. You may also adjust the pressure sensitivity of the digital pen by determining the scope of the tablet's working area, or (re-) program the hot-cells of your pen tablet by modifying device driver.

1. The Info Tab : The Info tab displays the version number of the driver and Tablet PC function.



(1) Show Icon in System Tray

You can choose it if you want to show the tablet icon () in the system tray.

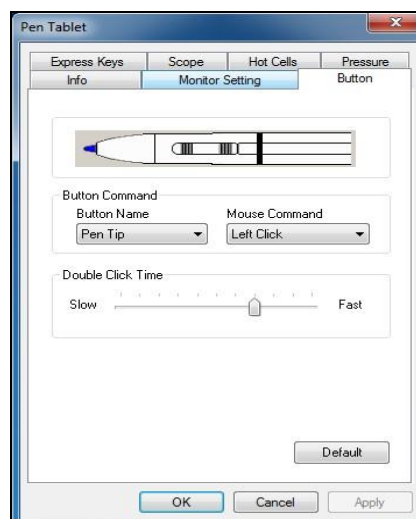
(2) Support Tablet PC Feature

You can select the Tablet PC function of pressure sensitive by tick the box of Support Tablet PC Feature.

★ **After the Tablet driver is installed in the Windows , the Tablet PC function setting will support pressure in MS Journal, OneNote (2003 \ 2007).....etc.**

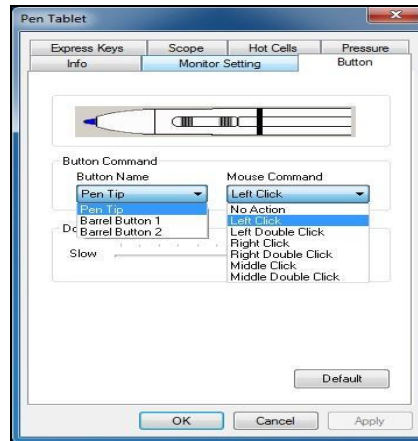
★ **If the Tablet PC setting is disabled, the most of art software's pen pressure (Photoshop, Illustrator, Corel Painter) are still working, but the pen pressure will be disappeared in MS Journal, OneNote(2003 \ 2007)etc.**

2. The Button Tab



2.1 Button Name

You may re-program the functions of the pen tip and the two-barrel buttons by selecting the button name from the drop down menu and assign a command of a traditional three-button mouse to it. According to the mouse function, you can select no action, left click, left double click, middle click, middle double click, right click, or right double click.



2.2 Double Click Time

Move the Speed Slider toward “Slow” if you want more time in double tapping with Pen Tip or opposite if move the Speed Slider toward “Fast”. This setting is the same as Double-click Speed on the page displayed by selecting **Start ► Control Panel ► Mouse ► Buttons**. Changing the speed in one place or changing the other in the meanwhile.

2.3 Default

Tap on the **Default** button to recovery from all the manufacture settings.

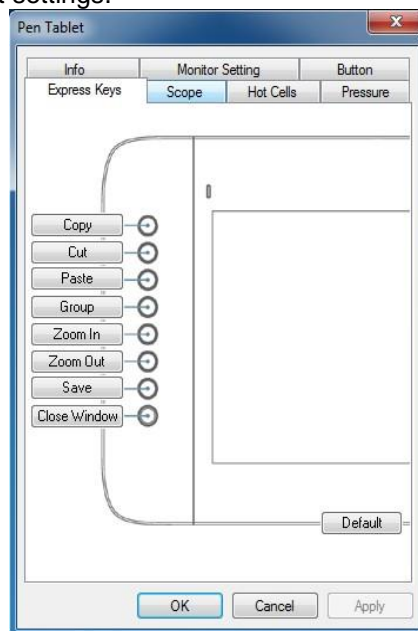
3. Express Keys define page

Express Keys :

- For the models with express keys, you can change the express key settings from the Express Keys Configuration Page.

3.1 Default

Resume the Express Keys to the default settings.



3.2 Re-define Express keys

Select “Common”, “Mouse”, “Multimedia”, “Other”, “Run”, “Internet” and “Hot Key” tabs to re-define the settings.

3.3 Common

Express key name

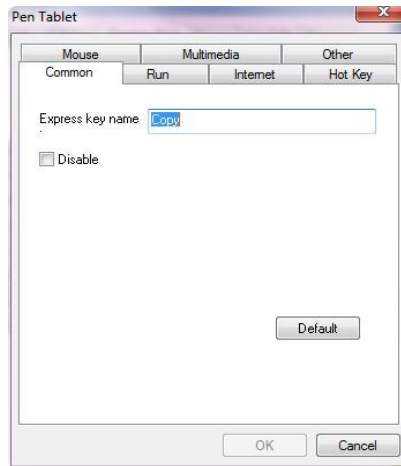
Rename the Express Key.

Disable

Disable the Express Key name display on the Pen Tablet control panel.

Default

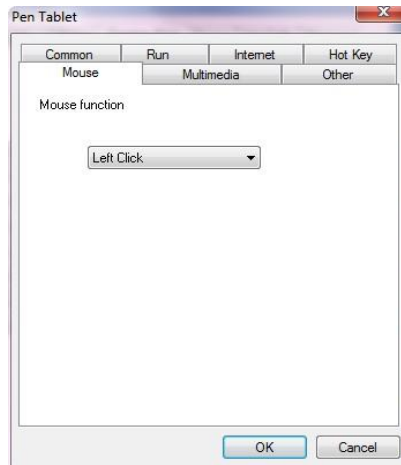
Resume the Express Key name to the default setting.



3.4 Mouse

Mouse function

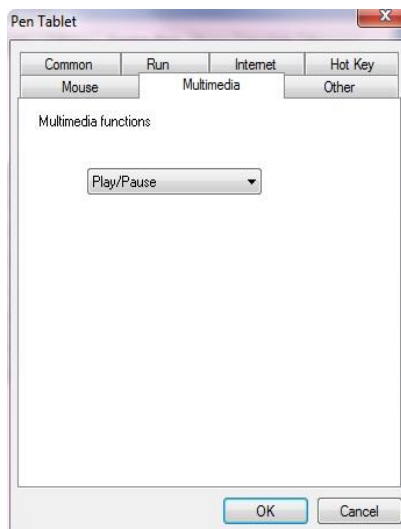
Select Mouse mode settings.



3.5 Multimedia

Multimedia function

Select multimedia function settings: **“Play/Pause”**, **“Stop”**, **“Previous”**, **“Next”**, **“Mute”**, **“Volume Up”** and **“Volume Down”**.



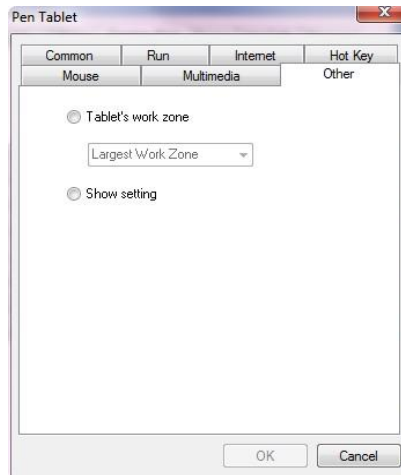
3.6 Other

Tablet's working area

Select **“Largest Working Area”** or **“Screen Ratio”**.

Show setting

Show Express key name.



3.7 Run

Run

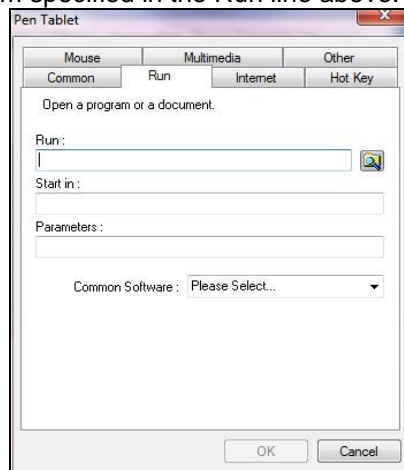
Use the browse button to select a file and run, or type in a file name with the complete path.

Start in

This is the initial folder when the program starts the execution.

Parameters

The string type will be passed to the program as parameters. For example, you may type in a document name here and pass it to a word processing program specified in the Run line above.



3.8 Internet

Network function

Select "Previous Page", "Next Page", "Refresh", " Stop", "My Favorite", "IE", "E-Mail".

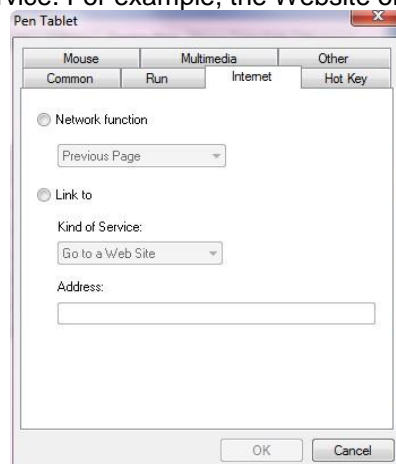
Link to:

Kind of Service

Select an Internet service to start. For example, browsing website, send an E-mail. The exact program initiated (for example, the browser program) depends on system settings.

Address

The URL address for the selected service. For example, the Website or e-mail addresses.



3.9 Hot Key

The key combination to press

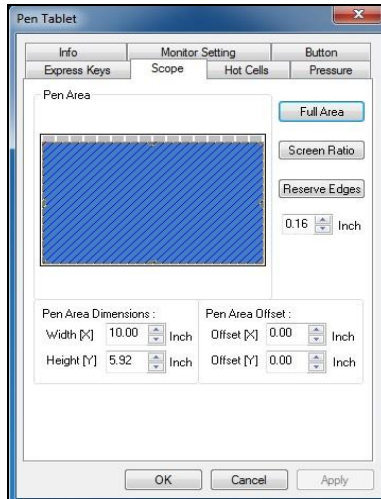
Select any key such as alphanumeric key or cursor control key, combined with Shift, Ctrl and/or Alt key.

Common function

Select some common used settings.



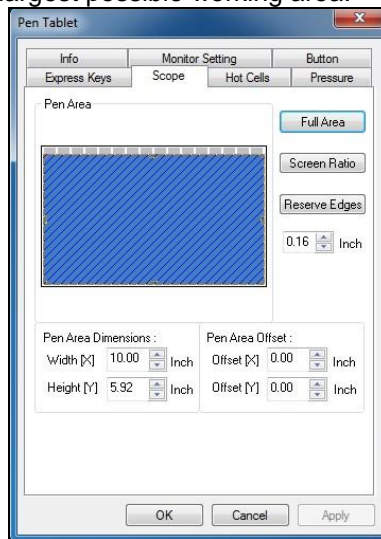
4. The Scope Tab



★ **Wireless Tablet (Media Wireless Tablet) don't support hot cell function ◦**

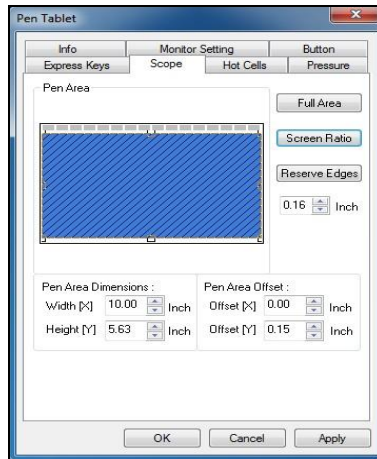
4.1 Full Area

Tap on the Full Area button to select the largest possible working area.



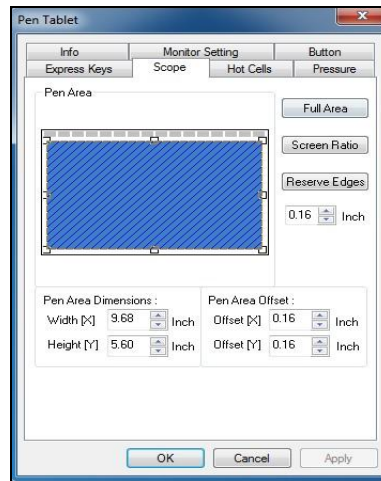
4.2 Screen Ratio

Set the tablet working area same as the screen size by clicking the button of screen ratio.



4.3 Reserve Edges

Tap on the Reserve Edges button to allocate space for the tablet's hot cells.



4.4 Pen Area Dimensions

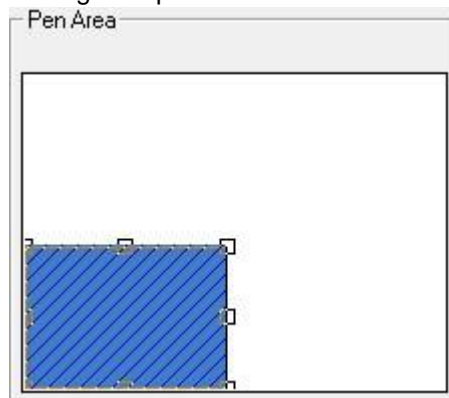
Indicates the current height and width in the Pen Area Dimensions. You may also type in new values here to change the dimensions of the tablet working area.

4.5 Pen Area Offset

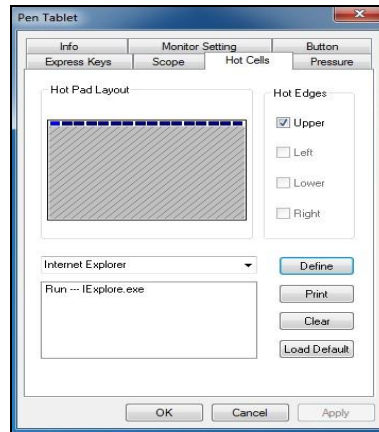
Indicates the horizontal and vertical distances of the upper left corner of Pen Area from the upper left corner of the maximum Pen Area. You may also set their values by typing in the numerical values here.

4.6 Pen Area

The Working area can be adjusted by moving the space.



5. Hot Cells define page



★ Wireless Tablet (Media Wireless Tablet) don't support hot cell function ◦

5.1 Hot Pad Layout

In Hot Pad Layout area, you can select any hot key to see the property by clicking the hot key in the blue map that shows on the digital tablet's location.

5.2 Hot Edges

There are four lines around the tablet for setup of your hot key location.

5.3 Print

Tap on the Print button to print an overview of all hot cell functions.

5.4 Clear

Tapping on this button will clear up the definition of the selected Hot Cell, so there is no action will be taken when the Hot Cell is tapped later on.

5.5 Define

Press the Define key to set the programs locations, Internet or hot key location.

5.5.1 Define Hot Cell - Run

Run

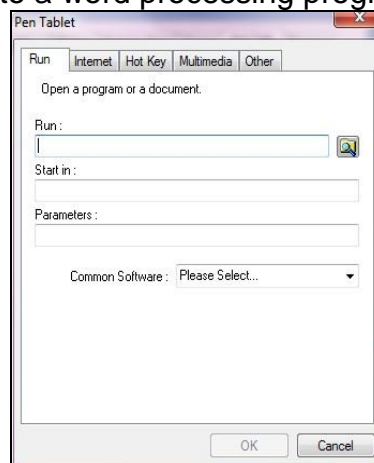
Use the browse button to select a file and run, or type in a file name with the complete path.

Start in

This is the initial folder when the program starts the execution.

Parameters

The string type will be passed to the program as parameters. For example, you may type in a document name here and pass it to a word processing program specified in the Run line above.



5.5.2 Define Hot Cell - Internet

Network function

Select "**Previous Page**", "**Next Page**", "**Refresh**", "**Stop**", "**My Favorite**", "**IE**", "**E-Mail**".

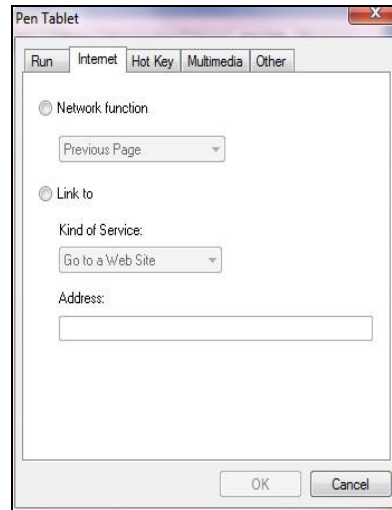
Link to:

Kind of Service

Select an Internet service to start. For example, browsing website, send an E-mail. The exact program initiated (for example, the browser program) depends on system settings.

Address

The URL address for the selected service. For example, the Website or e-mail addresses.



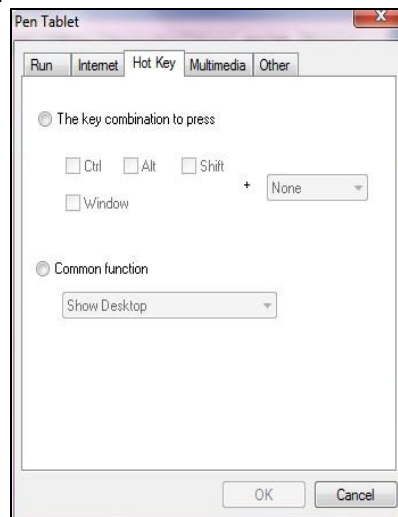
5.5.3 Define Hot Cell - Hot Key

The key combination to press

Select any key such as alphanumeric key or cursor control key, combined with Shift, Ctrl and/or Alt key.

Common function

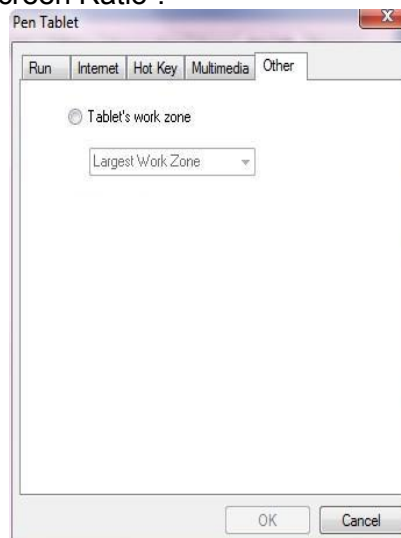
Select some common used settings.



5.5.4 Define Hot Cell - Other

Tablet's working area

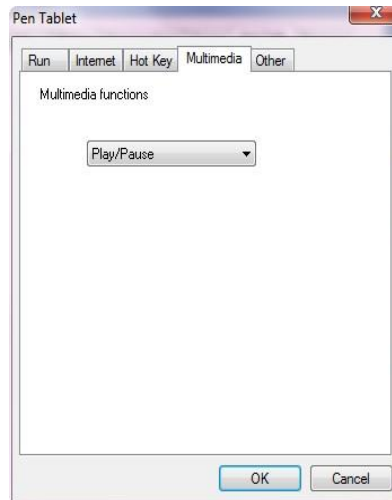
Select "Largest Working Area" or "Screen Ratio".



5.5.5 Define Hot Cell - Multimedia

Multimedia function

Select multimedia function settings: “**Play/Pause**”, “**Stop**”, “**Previous**”, “**Next**”, “**Mute**”, “**Volume Up**” and “**Volume Down**”.



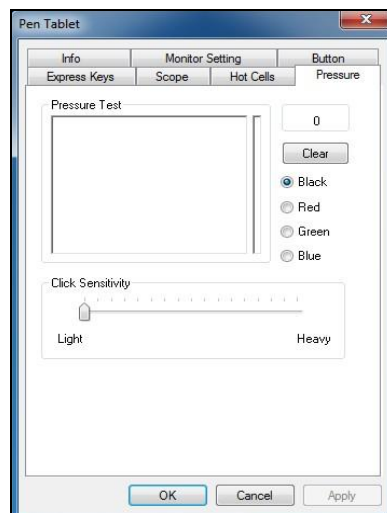
5.6 Load Default

【Load Default】 Return to original Default ◦

6. The Pressure Tab

6.1 Pressure Test

There are four different colors for selecting and the pressure sensitivity of the pen tablet can be adjusted in this tab. There is a test area to see the thickness of a line by pressing a certain pressure of pen tip on the tablet pad. The numerical value of the pressure level is shown in the field above the **Clear Button**.



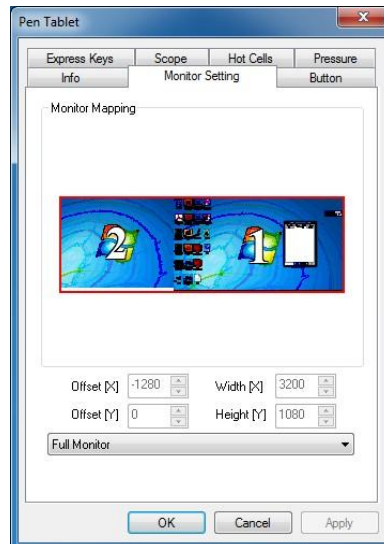
6.2 Clear

Tap on the **Clear button** to clean the space up in the Pressure Test area.

6.3 Click Sensitivity

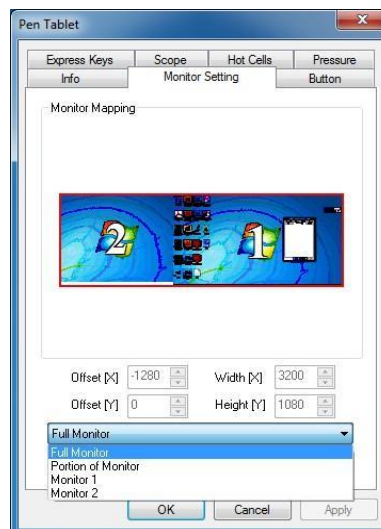
By default setting, tapping with the pen tip is equivalent to a left click of a mouse. Move the slider in the sensitivity bar to adjust the response of the pen tip. Light means when presses the pen tip that will be reacted very quickly with a slight power, but the heavy function is opposite.

7. The Monitor Setting Tab



7.1 Monitor Mapping

Select "Full Monitor" , "Portion of Monitor", "Monitor 1", "Monitor 2" .



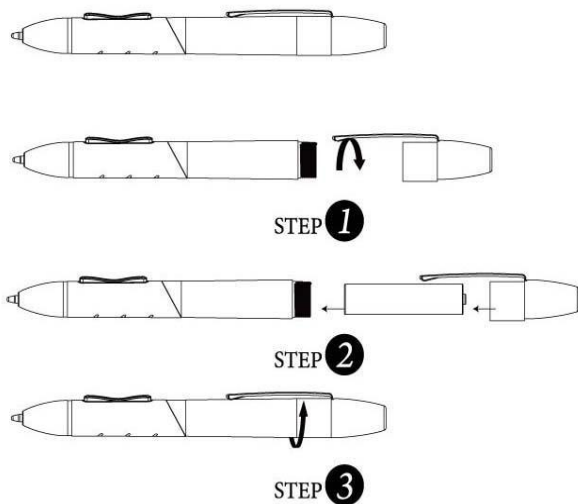
III. Storing the Digital pen and changing the Pen Battery & Tip

Storing the Digital pen properly

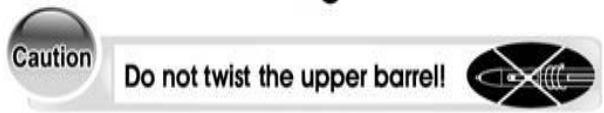
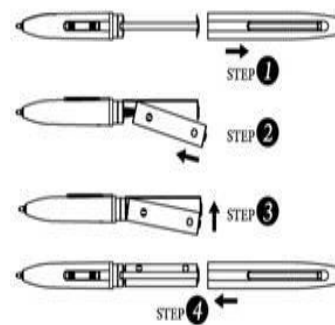
To store the Digital pen, make sure that the tip does not touch anything, especially, do not let the pen stand in a cup or penholder with the tip down. Pressure applied to the pen tip will cause a constant drain on the pen's battery, it is recommended to place the pen in a pen holder or store it with the pen tip pointing upward, or place it horizontally with the pen tip free of any other objects.

Changing the pen battery

Twist the pen cap and insert the battery.

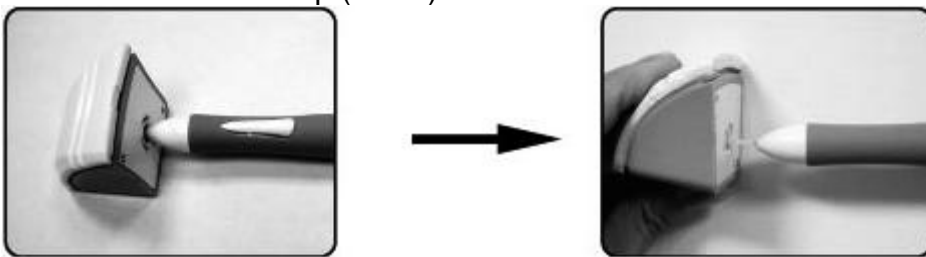


Pull the upper barrel out of the pen and insert the battery.

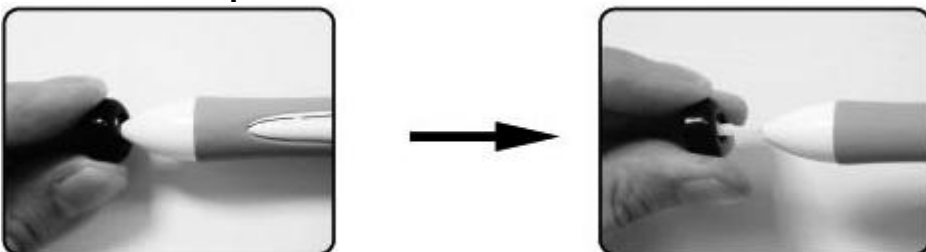


Changing the wireless stylus pen tip

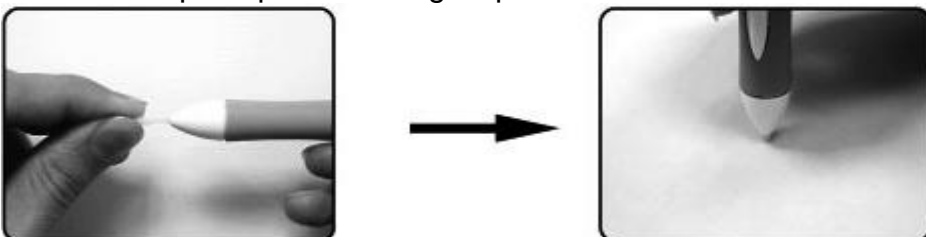
A: Pull out the pen tip from Digital pen by using a Pen Clip Penholder and Pen Clip (2 in 1)



Normal Pen Clip



B: Push the pen tip into the Digital pen



IV. Question & Answer

Question 1 : How can I get the update software ?

Answer: You can download the new driver from our website.

1. Uninstall your old driver: **Click [Start] ► [All Programs] ► [TABLET] ► [Uninstall].**
2. Download the latest version of driver in the download section and save it into your hard disk.
3. Unzip the file in a folder on your hard disk (with Windows built-in unzip utility or a program like Winzip for instance).
4. Double-click the Setup.exe in the folder where you unzipped the file.

Question 2 : The tablet cannot work. How can I do ?

Answer: Please follow steps as showing below:

1. Please pull off the tablet's USB plug from the computer.
2. Remove the Tablet driver from the system.
3. Re-connect the Tablet's USB to the computer.
 - 3.1 Check whether the tablet's LED is blinking or not? If the LED unlighted, that means your tablet is fault.
 - 3.2 Test your wireless digital pen on tablet working area, if it can work as a mouse, which means the hardware is OK. If it doesn't work, please change the battery with a new one.
 - 3.3 After changed a new battery for the pen, if it still not working, that means the hardware is fault.
4. You can download the latest version of driver directly from our website.
5. After installing the new version of driver, the system will require you to restart your computer.
6. After restart your computer, on bottom right of the screen, you can find the tablet icon (🖊) within there.
 - 6.1 If you can't find the tablet icon (🖊) on the bottom right of the screen, it means the driver fail in startup, It might cause by an incompatible issue.
 - 6.2 Check from **[My Computer] ► [Properties] ► [Hardware] ► [Device Manager]**, if there is an exclamation mark occurs, it means the installed driver of tablet is incompatible with the windows system. If you have this problem, please contact us for more service.
7. By clicking the tablet icon (🖊) on the bottom right of the screen, you can test the pressure sensitivity to see whether the pen pressure function works or not. (Please see the chapters 2, section 6, Pen tablet configuration for more details).

If you do not have the pen pressure, it means the pen might be faulty.

Question 3 : The LED of tablet is blinking continuously?

Answer: It means that the USB port of your PC has a bad connection or power is not stable. Please re-plug in your USB/dongle again. If still not working, please change to another USB port.

Question 4 : Why the RED LED of Wireless Tablet (Media WIRELESS Tablet) LED is blinking?

Answer: It means a low battery reminder, please change the new battery in time.

Question 5 : Wireless tablet doesn't work after not using for about 5 minutes ?

Answer: It's because the wireless tablet stays into the sleeping mode. You have to wake it up by pressing the resume button. If the tablet is not in used for too long, you might need to restart it by switching the power button.

Question 6 : Why does wireless tablet still not work after turning on the power and even pressing the Resume button ?

Answer: Please check if the LED is on and off right away when power is turned on. If the LED is not on, then please change the battery of tablet and digital pen. After changing the battery and the tablet and pen still don't work. Please kindly send the tablet and dongle back to where you purchased for repair.

Question 7 : Why does the LED flash when tapping the tablet by pen?

Answer: Please check if the distance is too far between dongle from wireless tablet or it's because of the working environment. If so, please auto bind the dongle again. If tablet can't bind to dongle, please kindly send it back to where you purchased for repair. Thank you.