

# MP 3D Printer Touchscreen Wifi® 150 x 140 x 140 mm

Affordable 3D Printers for every situation

For more information or to order, please contact **Monoprice Sales Representative** or [sales@monoprice.com](mailto:sales@monoprice.com)



Full Enclosure



Door Sensor



3.5-Inch Touchscreen



Wireless Connectivity

## FEATURES

**Full Enclosure:** The housing protects the printer from moisture and dust in the air.

**Door Sensor:** The printer will automatically stop if the door is opened.

**3.5-Inch Touchscreen:** The large touchscreen panel makes navigating menus and options simple and straightforward.

**Auto-Aided leveling:** The auto leveling feature makes it easy to set up prints right out of the box.

**Ultra-Quiet Printing:** The enclosure keeps printing noise to a minimum.

## MODEL

30525

Order Lead Time

FOB China (3 months after PO)  
EU Launch: FOB China (July 2018)

Build Size

150 x 140 x 140 mm

Filament

PLA Spool/1.75mm

Print Precision

± 0.10 mm

Layer Thickness

0.05 ~ 0.4 mm

Nozzle Diameter

0.40 mm

Max Extruder Temperature

240° C

Connection

USB Cable/USB Stick/Wifi

Operating Systems

Win XP/Vista/7/8/10, Mac OS, Linux

Input Power

100-240V / 1.7A

Heating Plate Temp

- No Heating Plate

Weight

24.25 lbs (11 kg) - w/ Package 35.27 lbs (16 kg)

Carton Dimensions

505 x 500 x 525 mm

Compatible Slicing Software

Slic3r, ReplicatorG, Makerware  
simplify3D, Skeinforge, Cura



150x140x140mm

Build Size



PLA

Filament  
1.75mm



No Heating Plate

Build Plate  
Temperature Range



Wi-Fi®

Wireless  
Connectivity



USB

USB  
Connectivity



24.25 lbs

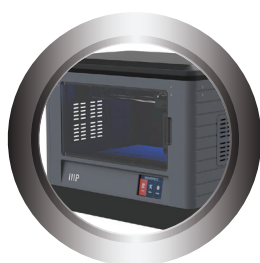
Weight

# MP 3D Printer Touchscreen Wifi®

230 x 150 x 160 mm  
Dual Extruder - Camera

Affordable 3D Printers for every situation

For more information or to order, please contact **Monoprice Sales Representative** or [sales@monoprice.com](mailto:sales@monoprice.com)



**Full Enclosure  
with Temperature Control**



**Camera**



**3.5-Inch Touchscreen**



**Alloy Build Platform**

## FEATURES

### Full Enclosure with Temperature Control:

The housing provides a completely controlled interior environment for the printer.

**Camera:** Keep an eye on your print with the interior camera by pairing it with your smart-phone over Wifi.

**3.5-Inch Touchscreen:** The large touchscreen panel makes navigating menus and options simple and straightforward.

### 6.5mm Non-Deforming Alloy Build Platform:

The build platform is made from a durable alloy that retains it's shape at high temperatures.

**Dual Extruder:** The dual extruder allows you to print using 2 colors at the same time and at higher speeds.

**Print Resuming:** The printer can continue printing from where it left off after sudden power outages or accidental unplugging.

## MODEL

30526

Order Lead Time

FOB China (3 months after PO)  
EU Launch: FOB China (July 2018)

Build Size

230 x 150 x 160 mm

Filament

ABS/PLA/PVA Spool/1.75mm

Print Precision

± 0.10 mm

Layer Thickness

0.05 ~ 0.4 mm

Nozzle Diameter

0.40 mm

Max Extruder Temperature

240° C

Connection

USB Cable/SD Card/Wifi

Operating Systems

Win XP/Vista/7/8/10, Mac OS, Linux

Input Power

100-240V / 4.5A-2.5A

Heating Plate Temp

ABS: 110-115° C / PLA: 50° C

Weight

24.25 lbs (11 kg) - w/ Package 37.48 lbs (17 kg)

Carton Dimensions

565 x 430 x 535 mm

Compatible Slicing Software

Slic3r, ReplicatorG, Makerware  
simplify3D, Skeinforge, Cura



230x150x160mm

Build Size



ABS/PLA/PVA

Filament  
1.75mm



50~115°C

Build Plate  
Temperature Range



Wi-Fi®

Wireless  
Connectivity



USB

USB  
Connectivity



microSD™

Card  
Connectivity



24.25 lbs

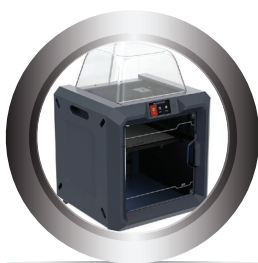
Weight



# MP 3D Printer Touchscreen Wifi® 280 x 250 x 300 mm

Affordable 3D Printers for every situation

For more information or to order, please contact **Monoprice Sales Representative** or [sales@monoprice.com](mailto:sales@monoprice.com)



**Full Enclosure  
with Temperature Control**



**Very Large Build Size**



**Touchscreen**



**Print Resuming**

## FEATURES

### Full Enclosure with Temperature Control:

The housing provides a completely controlled interior environment for the printer.

**Very-Large Build Size:** This printer is capable of producing prints at 280 x 250 x 300 mm.

**Touchscreen:** The touchscreen panel makes navigating menus and options simple and straightforward.

**Print Resuming:** The printer can continue printing from where it left off after sudden power outages or accidental unplugging.

**Low Filament Level Warning:** An automatic reminder activates when filament levels are nearing empty.

**Auto-Aided Leveling:** The auto leveling feature makes it easy to set up prints right out of the box.

## MODEL

**30527**

Order Lead Time

FOB China (3 months after PO)  
EU Launch: FOB China (July 2018)

Build Size

280 x 250 x 300 mm

Filament

ABS/PLA/PVA Spool/1.75mm

Print Precision

± 0.10 mm

Layer Thickness

0.05 ~ 0.4 mm

Nozzle Diameter

0.40 mm

Max Extruder Temperature

240° C

Connection

USB Cable/USB Stick/Internet/Wifi

Operating Systems

Win XP/Vista/7/8/10, Mac OS, Linux

Input Power

100-240V / 5.3A -2.1A

Heating Plate Temp

ABS: 110-115° C / PLA: 50° C

Weight

66.14 lbs (30 kg) - w/ Package 83.78 lbs (38 kg)

Carton Dimensions

615 x 670 x 695 mm

Compatible Slicing Software

Slic3r, ReplicatorG, Makerware  
simplify3D, Skeinforge, Cura



**280x250x300mm**  
Build Size



**ABS/PLA/PVA**  
Filament  
1.75mm



**50~115°C**  
Build Plate  
Temperature Range



**Wi-Fi®**  
Wireless  
Connectivity



**USB**  
USB  
Connectivity



**66.14 lbs**  
Weight

# MP 3D Printer Touchscreen Wifi®

Affordable 3D Printers for every situation

For more information or to order, please contact **Monoprice Sales Representative** or [sales@monoprice.com](mailto:sales@monoprice.com)



30525  
**MP 3D Printer Touchscreen Wifi®**  
150 x 140 x 140 mm

**Full Enclosure:** The housing protects the printer from moisture and dust in the air.

**Door Sensor:** The printer will automatically stop if the door is opened.

**3.5 Inch Touchscreen:** The large touchscreen panel makes navigating menus and options simple and straightforward.

**Auto-Aided Leveling:** The auto leveling feature makes it easy to set up prints right out of the box.

**Ultra-Quiet Printing:** The enclosure keeps printing noise to a minimum.



30526  
**MP 3D Printer Touch Screen Wifi®**  
230 x 150 x 160 mm Dual Extruder - Camera

**Dual Extruder:** The dual extruder allows you to print using 2 colors at the same time and at higher speeds.

**Camera:** Keep an eye on your print with the interior camera by pairing it with your smartphone over Wifi.

**Print Resuming:** The printer can continue printing from where it left off after sudden power outages Or accidental unplugging.

**3.5-Inch Touchscreen:** The large touchscreen panel makes navigating menus and options simple and straightforward.

**6.5 mm Non-deforming Alloy Build Platform:** The build platform is made from a durable alloy that retains it's shape at high temperatures.

**Full Enclosure with Temperature Control:** The housing provides a completely controlled interior environment for the printer.



30527  
**MP 3D Printer Touch Screen Wifi®**  
280 x 250 x 300 mm

**Print Resuming:** The printer can continue printing from where it left off after sudden power outages or accidental unplugging.

**Very-Large Build Size:** This printer is capable of producing prints at 280 x 250 x 300 mm.

**Auto-Aided Leveling:** The auto leveling feature makes it easy to set up prints right out of the box.

**Low Filament Level Warning:** An automatic reminder activates when filament levels are nearing empty.

**Touchscreen:** The touchscreen panel makes navigating menus and options simple and straightforward.

**Full Enclosure with Temperature Control:** The housing provides a completely controlled interior environment for the printer.

Model	30525	30526	30527
Order Lead Time	FOB China (3 mo. after PO) EU Launch: FOB China (July 2018)	FOB China (3 mo. after PO) EU Launch: FOB China (July 2018)	FOB China (3 mo. after PO) EU Launch: FOB China (July 2018)
Build Size	150 x 140 x 140 mm	230 x 150 x 160 mm	280 x 250 x 300 mm
Filament	PLA Spool/1.75mm	ABS/PLA/PVA Spool/1.75mm	ABS/PLA/PVA Spool/1.75mm
Print Precision	± 0.10 mm	± 0.10 mm	± 0.10mm
Layer Thickness	0.05 ~ 0.4 mm	0.05 ~ 0.4 mm	0.05 ~ 0.4 mm
Nozzle Diameter	0.40 mm	0.40 mm	0.40 mm
Max Extruder Temperature	240° C	240° C	240° C
Connection	USB Cable/USB Stick/Wifi	USB Cable/SD Card/Wifi	USB Cable/USB Stick/Internet/Wifi
Operating Systems	Win XP/Vista/7/8/10, Mac OS, Linux	Win XP/Vista/7/8/10, Mac OS, Linux	Win XP/Vista/7/8/10, Mac OS, Linux
Input Power	100-240V / 1.7A	100-240V / 4.5A-2.5A	100-240V / 5.3A -2.1A
Heating Plate Temp	- No Heating Plate	ABS: 110-115° C / PLA: 50° C	ABS: 110-115° C / PLA: 50° C
Weight	24.25 lbs (11 kg) - w/ Pkg 35.27 lbs (16 kg)	24.25 lbs (11 kg) - w/ Pkg 37.48 lbs (17 kg)	66.14 lbs (30 kg) - w/Pkg 83.78 lbs (38 kg)
Carton Dimensions	505 x 500 x 525 mm	565 x 430 x 535 mm	615 x 670 x 695 mm
Compatible Slicing Software	Slic3r, ReplicatorG, Makerware simplify3D, Skeinforge, Cura	Slic3r, ReplicatorG, Makerware simplify3D, Skeinforge, Cura	Slic3r, ReplicatorG, Makerware simplify3D, Skeinforge, Cura