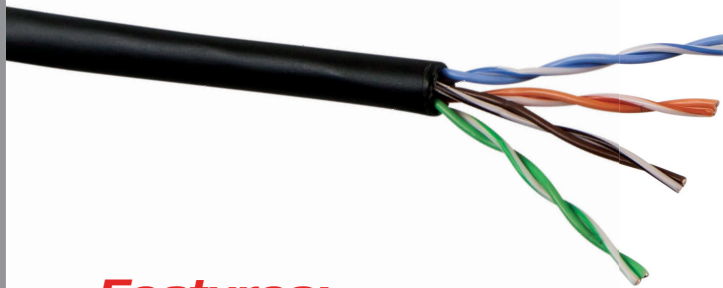




Cat5e In-Wall Stranded

Cat5e UTP Stranded, In-Wall Rated (CM), Bulk Ethernet Cable, 24AWG, 350MHz, 1000ft

Available Colors: Packaging Style: Pull box, Monoprice Brand



Features:

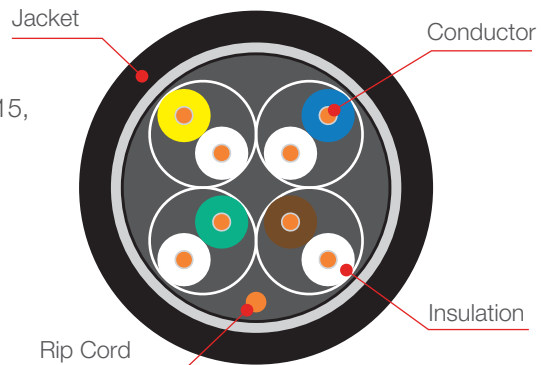
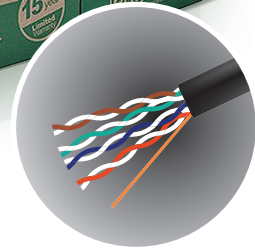
- Made in China
- 24AWG Stranded Bare Copper Conductors
- CM In-Wall
- 350 MHz Broadband
- ETL verified, UL listed and ROHS2 Compliant
- Supports TIA/EIA 568-B specifications

Applications:

- ANSI X3T9.5 TP-PMD (FDDI)
- ATM PMD 155 MBPS
- 10 BASE-T, 100 BASE-T4, Fast Ethernet (IEEE 802.3)

Ratings/certifications:

- ANSI, TIA, EIA-568-B, UL 444, CSA C22.1-06 CEC
ETL VERIFIED, UL 444 CM, UL LISTED/CUL: E329415, CM, ROHS 2





Cat5e In-Wall Stranded

Technical data

Rated Temperature	75°C	Conductor	7 x 0.20mm
Rated Voltage	30V	Insulation	HD-PE
AWG	24AWG	Thickness	1mm
Product Standard Certification	UL 444, ETL 568C	Jacket Material	PVC



Electrical characteristics

CONDUCTOR RESISTANCE	9.38 Ohms/100m
MUTUAL CAPACITANCE	5.6nF/100m
RESISTANCE UNBALANCE	5%
CAPACITANCE UNBALANCE	330pF/100m
IMPEDANCE	100 ±15 ohm
ANSI/TIA 568-C.2	YES
ISO/IEC 11801: 2002	NO
MAXIMUM (MEASURED) FREQUENCY	100MHz @ Cat 5e

Color of pairs

Pair 1	White/Blue, Blue	Pair 3	White/Orange, Orange
Pair 2	White/Green, Green	Pair 4	White/Brown, Brown

Standard compliances:

- All proposed Category 5E requirements as per ANSI/TIA/EIA-568-B, UL444, CSA C22.1-06 CEC, and ETL VERIFIED

Jacket printing:

MONOPRICE CM TYPE 4PR 24AWG 75~
(UL) E316395 ETL VERIFIED TIA/EIA-568-8.2
CAT.5E UTP 350MHz LOT
NO. RoHS COMPLIANCE V184