





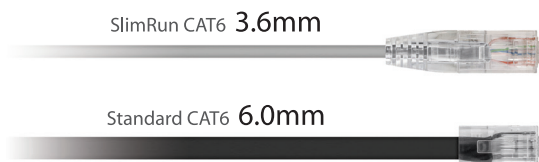
**M** MONOPRICE

## Cat6 Ethernet Patch Cables

### SlimRun™ Cat6 28AWG UTP Ethernet Network Cable

Available Colors:     

Packaging Style: PE Bag



### Features:

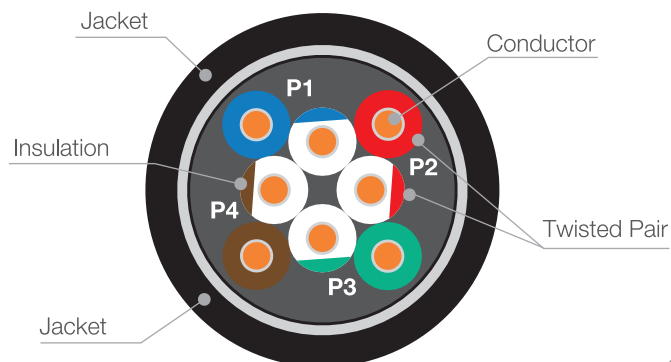
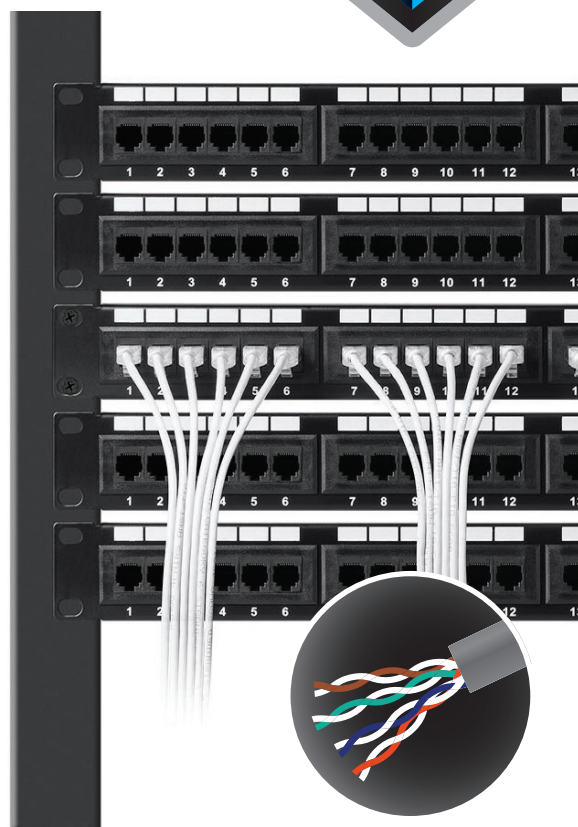
- Component tested
  - Great for data centers or server rooms
- 0.149 inches in diameter
  - Roughly half the diameter of standard Cat6
- Snagless narrow profile boot design
- 50µm gold plated contacts
- 28AWG Stranded Bare Copper Conductors
- 550Mhz Broadband
- ETL verified, UL listed and ROHS2 Compliant
- Supports TIA/EIA 568-C.2 specifications

### Applications:

- ATM PMD 155 MBPS
- IEEE 802.3 FAST ETHERNET
- 10 BASE-T, 100 BASE-T4, 100 BASE-X,
- IEEE 802.5
- 4/16 MBPS TOKEN RING, 100 MBPS TPDDI
- 1000 BASE T, 622 MBPS ATM
- IE:ANSI/TIA-568-C.2 CATEGORY-6
- IEEE 802.12
- 100 BASE-VG

### Ratings/certifications:

- ANSI, TIA, EIA-568-B, ISO, IEC 11801, UL 444, ROHS, TIA/EIA 568-C.2





## SlimRun™ Cat6

### Technical data

Rated Temperature	60°C	Conductor	Bare Copper
Rated Voltage	30V	Insulation	PE
AWG	28AWG	Thickness	0.21 mm
Product Standard Certification	Component Tested	Jacket Material	PVC
		Outer Diameter	3.8+/-0.2mm



### Electrical characteristics

CONDUCTOR RESISTANCE	Max. 139 ohms / km at 20
MUTUAL CAPACITANCE	<5.6 nF per 100 m (328 ft.)
RESISTANCE UNBALANCE	<5%
CAPACITANCE UNBALANCE	<330 pF per 100 m (328 ft.)
IMPEDANCE	100 Ohm +/-15% up to 100 MHz
MAXIMUM (MEASURED) FREQUENCY	550 mhz

### Color of pairs

Pair 1	Blue - White / Blue	Pair 3	Orange - White / Orange
Pair 2	Green - White / Green	Pair 4	Brown - White / Brown

### Standard compliances:

- All proposed Category Cat6 requirements as per ANSI/TIA/EIA-568-B, UL444, CSA C22.1-06 CEC, and ETL VERIFIED

### Jacket printing:

E467139 PATCH CORD UTP CATEGORY 6  
28AWG 4 PAIRS ANSI/TIA/EIA 568B